

Project:			Submitted by:	
Qty:		Type:		
Product Number:			Date:	

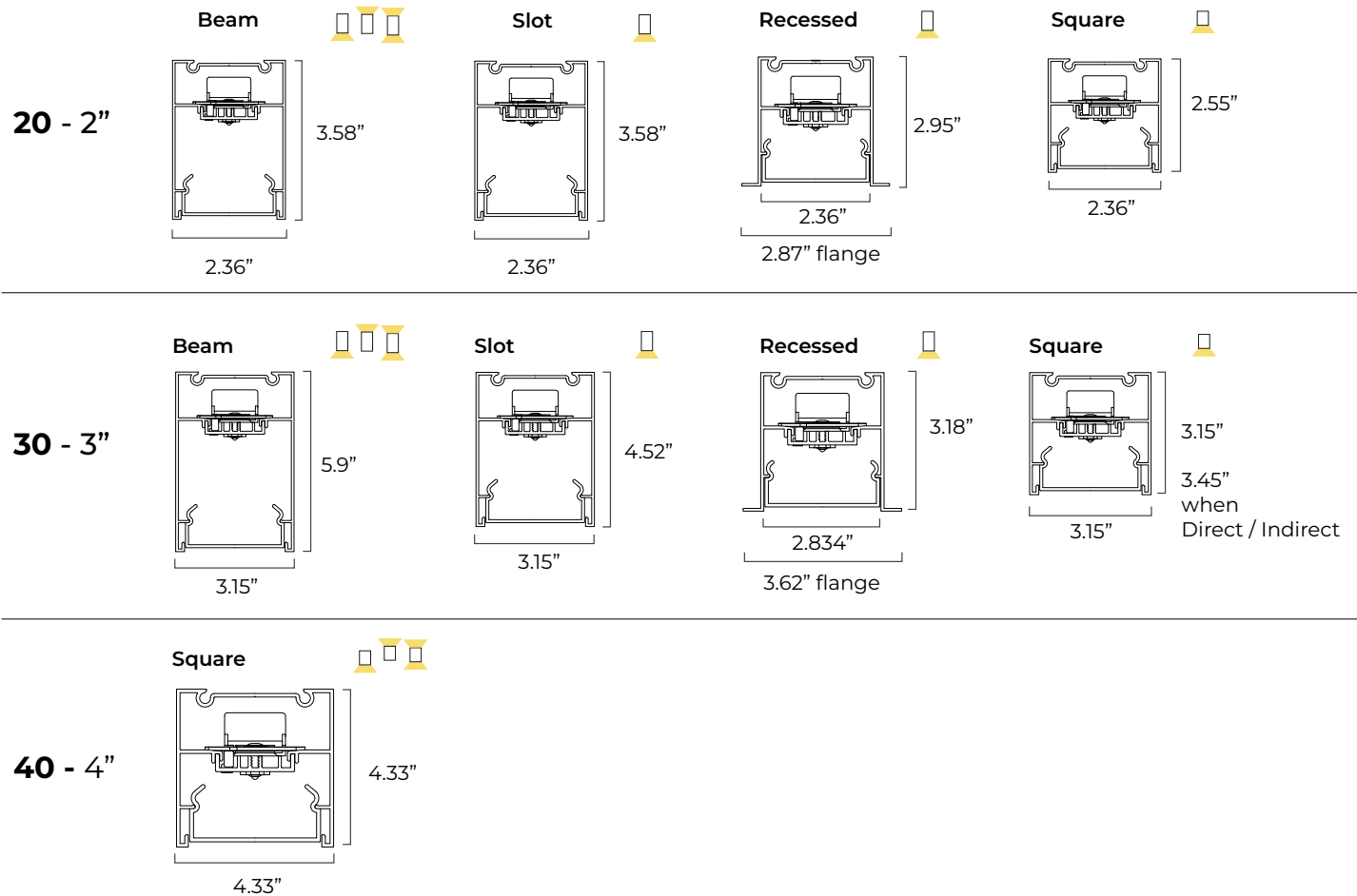


The Acculine high-performance linear lighting family features light-leak-free technology, an easy, toolless installation and joining system, and removable gear trays for future-proof maintenance and upgrades. Acculine also offers a wide range of output options, high-performance optical lens options including low UGR, and a variety of colors and finishes.

## Features

- ▶ 2" / 3" profiles - IP20 or IP55 | 4" profile - IP20
- ▶ Quick connect wiring for continuous, seamless illumination
- ▶ Fully illuminated quick connect joiners
- ▶ Suspended, surface, recessed and wall mounting
- ▶ Low-glare baffle and asymmetric optics available
- ▶ Sensor / control options

## Sizes



Project:				Submitted by:	
Qty:		Type:			
Product Number:				Date:	

## Specifications

SIZES	SHAPES:	IP RATING	LIGHT DISTRIBUTION	DIFFUSER / OPTICS
<b>Nominal Profile widths:</b> 2 inch 3 inch 4 inch  <b>Nominal Profile lengths:</b> 2ft = 600 mm 3ft = 900 mm 4ft = 1200mm 5ft = 1800mm 8ft = 2400mm	<ul style="list-style-type: none"> <li>Beam</li> <li>Slot</li> <li>Recessed</li> <li>Square</li> <li>Square HO</li> </ul>	<b>IP20</b> indoor use  <b>IP55</b> Outdoor covered use	<ul style="list-style-type: none"> <li>Direct (standard)</li> <li>Indirect (standard)</li> <li>Direct/Indirect</li> <li>Direct</li> <li>40°/ 60° / 70° / 90°/110°/145° / 165°</li> <li>Direct Asymmetric</li> <li>Batwing</li> <li>Direct low-UGR</li> <li>Direct louver</li> </ul>	<ul style="list-style-type: none"> <li>Acrylic</li> <li>Acrylic Ultra</li> <li>Polycarbonate</li> <li>Plexiglass</li> <li>Low UGR</li> <li>Black louver</li> <li>White louver</li> <li>Silver Louver</li> <li>40 Degree*</li> <li>60 degree*</li> <li>70 Degree*</li> <li>90 degree*</li> <li>110 degree*</li> <li>145 degree*</li> <li>165 degree*</li> <li>Asymetric*</li> <li>Batwing*</li> </ul>


\* NA for IP55

CCT	CRI	DRIVER	DIMMING	ELECTRICAL	OUTPUT
<ul style="list-style-type: none"> <li>3000k</li> <li>3500k</li> <li>4000k</li> <li>27-65k</li> <li>RGBW</li> </ul>	90 CRI standard	<ul style="list-style-type: none"> <li>Non dimming fixed output</li> <li>0-10V dimming</li> <li>Casambi wireless</li> <li>DALI</li> <li>DMX</li> </ul>	<b>Standard:</b> ON/OFF  <b>Optional:*</b> 0-10V DALI DMX	6 - 14 W/ft PF > 0.9 THD < 9.8%  <b>Voltage</b> <ul style="list-style-type: none"> <li>120-277 Universal</li> <li>347 Canada</li> </ul>	<ul style="list-style-type: none"> <li>250 lm/ft</li> <li>500 lm/ft</li> <li>750 lm/ft</li> <li>1000 lm/ft</li> <li>1250 lm/ft</li> </ul> <p>*Custom lumen outputs available upon request)</p>

LIFETIME	EFFICACY
7 years, 82k hours  Operating Temp: -25°C to 35°C	100 - 124 Lm/W (depending on options and finishes)

FINISH	MOUNTING	ACCESSORY OPTIONS
Aluminium extrusion with powder-coated finish:  <b>Standard powder-coated colors are:</b> <ul style="list-style-type: none"> <li>Textured White</li> <li>Textured Black</li> <li>Silver Pearl</li> <li>Clear Anodized</li> </ul> <b>Custom powder-coat on request:</b> <ul style="list-style-type: none"> <li>Custom Color RAL</li> <li>Custom Color Anodized</li> </ul>	<ul style="list-style-type: none"> <li>Wire Suspension</li> <li>Rod Suspension</li> <li>Recessed</li> <li>Wall Block</li> <li>Wall Direct</li> <li>Ceiling Mount</li> <li>Trimless Recess</li> <li>Flush Mount</li> <li>Recessed Flange</li> </ul>	<ul style="list-style-type: none"> <li>Integral Emergency</li> <li>Downlight</li> <li>Sensor</li> <li>Canopy Plate</li> <li>Screwless Endplate</li> <li>Remote Driver</li> </ul>

JOINER OPTIONS:	CONNECTIONS:
Lit corner 90° / Cross 90° / T 90° / Straight 180° Join	Fast connecting joining system with polarized electrical connection between sections

CERTIFICATION:	WARRANTY:
 <b>UL Compliant</b>  IP20 Standard. IP55 versions available.	Standard: 7 Year limited warranty.

\*Custom options may affect pricing and lead times. Contact PAL for more information.



Project:		Submitted by:	
Qty:		Type:	
Product Number:		Date:	

## Ordering

**ORDERING EXAMPLE:** AL-30-BE-20-D/I-PC-PC-40-90-AI-U-1000-TB-WS-ET-4

### 1: FORM

SERIES	SIZE	SHAPE	IP RATING
<b>AL</b>			
<b>AL</b> Acculine	<b>20</b> 2 inches	<b>BE*</b> Beam	<b>20</b> indoor use
	<b>30</b> 3 inches	<b>SQ</b> square	<b>55</b> Outdoor covered use
	<b>40</b> 4 inches	<b>SQH**</b> square HO	
		<b>SL*</b> Slot	
		<b>RE*</b> recessed	
		* NOT AVAILABLE AL-40	
		**NOT AVAILABLE AL-20 & AL-30	

### 2: OPTICS

DISTRIBUTION	DOWNWARD - DIFFUSER/OPTICS	UPWARD - DIFFUSER/OPTICS
<b>D</b> Direct	<b>AU</b> Acrylic Ultra	<b>40*</b> 40 Degree
<b>I</b> Indirect	<b>PC</b> Polycarbonate	<b>60*</b> 60 degree
<b>D/I</b> Direct/Indirect	<b>PG</b> Plexiglass	<b>70*</b> 70 Degree
Indirect options only available for AL-20-BE AL-30-BE AL-30-SQ AL-40-SQHO	<b>LU</b> low UGR	<b>90*</b> 90 degree
	<b>BL</b> Black louver	<b>110*</b> 110 degree
	<b>WL</b> White louver	<b>145*</b> 145 degree
	<b>SL</b> Silver Louver	<b>165*</b> 165 degree
		<b>AS*</b> Asymmetric
		<b>BW*</b> Batwing
<b>CCT</b>	<b>CRI</b>	*NOT AVAILABLE for IP55
<b>30</b> 3000k	<b>90</b> 90 CRI standard	
<b>35</b> 3500k		
<b>40</b> 4000k		
<b>27-65</b> 27-65k		
<b>RG</b> RGBW		

### 3: ELECTRICAL

DRIVER	VOLTAGE	OUTPUT*
<b>ND</b> non dimming fixed output	<b>U</b> 120-277 Universal	<b>250</b> 250 lumens
<b>A1</b> 0-10v dimming	<b>3</b> 347 Canada	<b>500</b> 500 lumens
<b>CS</b> casambi wireless		<b>750</b> 750 lumens
<b>DA</b> Dali		<b>1000</b> 1000 lumens
<b>DX</b> DMX		<b>1250</b> 1250 lumens
		___ Custom lumen
		*Delivered Lumens

### 4: FINISH

HOUSING FINISH
<b>TW</b> Textured White
<b>TB</b> Textured Black
<b>SV</b> Silver Pearl
<b>CA*</b> Clear Anodized
<b>C___</b> Custom Color RAL
<b>CC___</b> Custom Color Anodized
*Additional option available upon request — consult factory.

### 5: MOUNTING

MOUNTING
<b>WS</b> Wire Suspension
<b>RD</b> Rod Suspension
<b>RE*</b> Recessed
<b>WB</b> Wall Block
<b>WD</b> Wall Direct
<b>CE</b> Ceiling Mount
<b>TR</b> Trimless recess
<b>FM</b> Flush Mount
<b>RF*</b> Recessed Flange
*Recessed (RE) SHAPE only.

### 6: OPTIONS

OPTIONS
<b>ET</b> Integral Emergency
<b>DL</b> Downlight
<b>SN</b> Sensor
<b>CN</b> Canopy Plate
<b>SE</b> Screwless endplate
<b>RM</b> Remote driver
Add all options that apply.

### 7: LENGTH

NOMINAL LENGTHS*
<b>2</b> 2ft (600 mm)
<b>3</b> 3ft (900 mm)
<b>4</b> 4ft (1200mm)
<b>6</b> 5ft (1800mm)
<b>8</b> 8ft (2400mm)
___* Custom Length in ft
*Custom lengths can be specified to fit standard lengths OR to the inch. Specifying to the inch will be subject to additional lead time and costs.



Project:			Submitted by:	
Qty:		Type:		
Product Number:			Date:	

## Joining Options

### Joiners

(only available for AC / AU / PC / PG diffusers.  
Unless advised, joiners will be illuminated, match finish, and match light distribution.)

### Custom Patterns

(Describe the requested form/pattern -  
ex. "1 square, approx. 4' in width")



**AL L90**  
"L" joiner, 90°



**AL T90**  
"T" joiner, 90°



**250**  
250 lumens



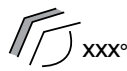
**AL V135**  
Bend joiner, 135°



**AL V\_\_\_\_\_**  
Custom angle - include degree



**AL CTW90**  
Ceiling to Wall, 90°



**AL VERT\_\_\_\_\_**  
Custom vertical bend

## Finishes

### Standard Colors



Textured White



Textured Black



Silver Pearl



Clear Anodized

### Additional Colors / Finishes (Extra Cost)

RAL Colors

Rust / Timbers

Anodized

Concrete Finishes

Non-Standard Colors

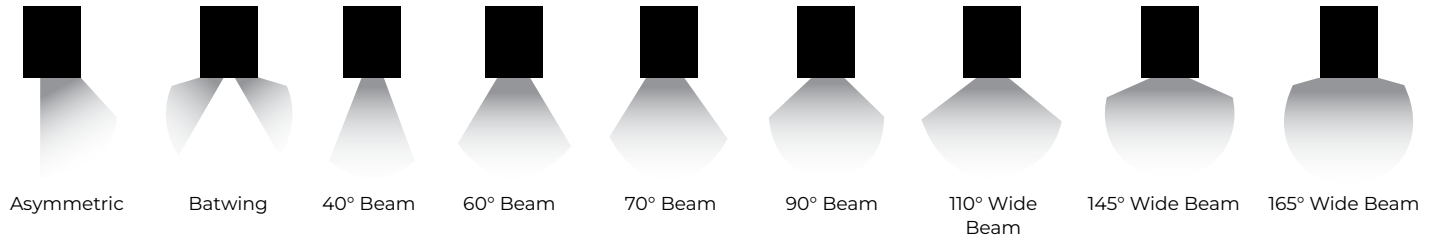
For a full color  
swatch chart,  
click or scan the  
QR code



Project:				Submitted by:	
Qty:		Type:			
Product Number:				Date:	

## Optics (IP20 Profiles)

### Beam Angles:

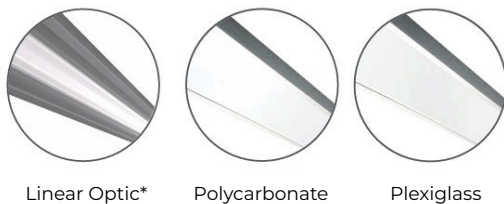


### Diffuser options:

#### Optical control (Downward Diffuser)



#### Optical control (Upward Diffuser)



\* NOTE: NOT AVAILABLE IN IP55

### Diffuser definitions:

**Plexiglass:** A clear, high-transmission lens that maximises light output while maintaining a clean and minimal visual appearance.

**Low UGR Plexiglass:** A specially treated clear lens designed to reduce glare and improve visual comfort while preserving strong light transmission.

**Opal Polycarbonate:** A diffused, impact-resistant lens that delivers soft, uniform illumination with excellent durability.

**Microprism:** A precision-structured lens that controls glare and distributes light evenly for comfortable, controlled illumination.

**Louvres:** A directional grid optic that minimises glare and spill light by shielding the light source and guiding the beam.

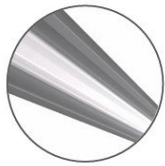


Project:				Submitted by:	
Qty:		Type:			
Product Number:				Date:	

## Optics (IP55 Profiles)

### Diffuser Options:

#### Optical control (Downward Diffuser)



Linear Optic\*



Low UGR  
Plexiglass



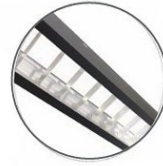
Polycarbonate



Plexiglass



Optic White



Louvre Powdercoated  
White / Black / Silver

#### Optical control (Upward Diffuser)



Low UGR  
Plexiglass



Polycarbonate



Plexiglass

### Diffuser definitions:

**Plexiglass:** A clear, high-transmission lens that maximises light output while maintaining a clean and minimal visual appearance.

**Low UGR Plexiglass:** A specially treated clear lens designed to reduce glare and improve visual comfort while preserving strong light transmission.

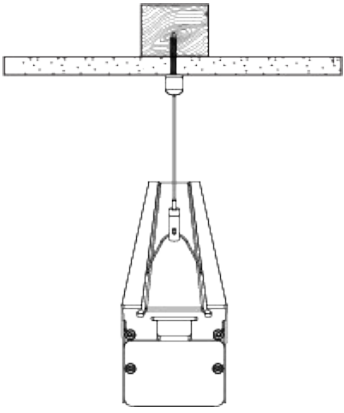
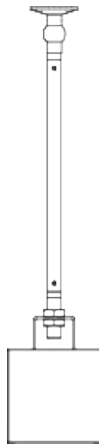
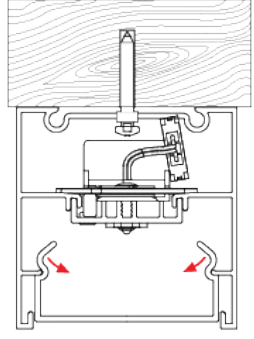



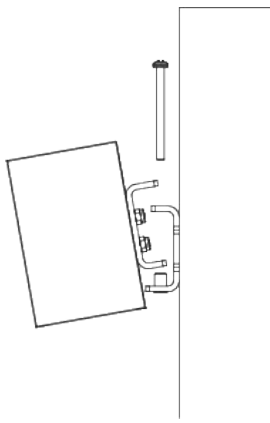
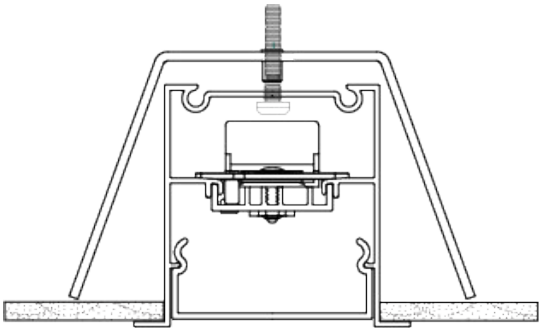


**Opal Polycarbonate:** A diffused, impact-resistant lens that delivers soft, uniform illumination with excellent durability.

**Microprism:** A precision-structured lens that controls glare and distributes light evenly for comfortable, controlled illumination.

**Louvres:** A directional grid optic that minimises glare and spill light by shielding the light source and guiding the beam.

Project:		Submitted by:	
Qty:		Type:	
Product Number:		Date:	

## Mounting

 <p data-bbox="235 913 503 955">Wire Suspension</p>	 <p data-bbox="722 913 950 955">Rod Suspension</p>	 <p data-bbox="1201 913 1421 955">Surface Mount</p>
<p data-bbox="251 1018 414 1102"><b>Instructions</b> Click or scan the QR code</p> 	<p data-bbox="738 1018 901 1102"><b>Instructions</b> Click or scan the QR code</p> 	<p data-bbox="1209 1018 1372 1102"><b>Instructions</b> Click or scan the QR code</p> 
 <p data-bbox="349 1669 535 1711">Wall Bracket</p>	 <p data-bbox="1120 1669 1258 1711">Recessed</p>	
<p data-bbox="495 1774 657 1858"><b>Instructions</b> Click or scan the QR code</p> 	<p data-bbox="1209 1774 1372 1858"><b>Instructions</b> Click or scan the QR code</p> 	



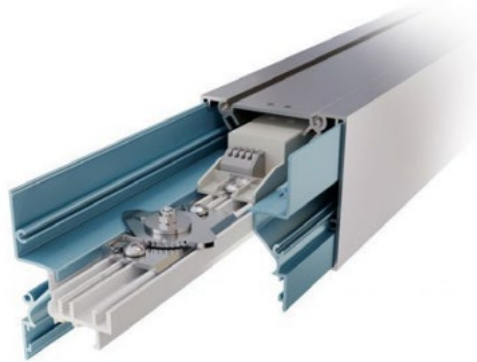
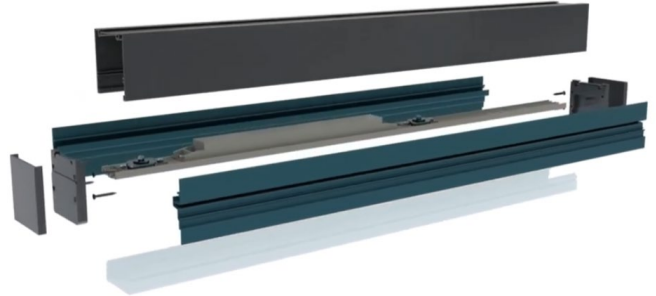
Project:		Submitted by:	
Qty:		Type:	
Product Number:		Date:	

## Service Sustainability

### Removable gear tray / LED board

We value the lifespan and investment of linear lighting so that's why the Acculine series features quick-connect, servicable gear trays/LED boards.

- Designed for easier installation and maintenance.
- Future-proof: Update as technology advances.
- Allows for faster customization, reducing lead times.



Feature	Acculine Gear Try	Standard LED Linear
Replacement Time	<b>&lt; 5 Minutes</b>	<b>30 - 90 Minutes</b>
Tools Required	<b>None / Minimal</b>	<b>Fastners, strippers, hand-held tools, possible power-tools, electrical testing equipment</b>
Risk of Damage	<b>Low (Plug and Play)</b>	<b>Med - High (shock / wiring errors)</b>
Future Proofing	<b>Snap-In upgrades</b>	<b>Full luminaire replacement</b>

Suggested "Execution" or "Luminaires" text in specification:

#### Maintenance & Serviceability Requirement:

To ensure long-term sustainability and minimize facility downtime, all linear LED luminaires shall feature a, tool-less, removable internal gear tray system. The system must allow for the complete removal and replacement of the LED engine and driver assembly as a single integrated unit without removing the luminaire housing from the mounting substrate. Systems requiring the removal of the entire fixture for component servicing, or those utilizing fixed internal components that necessitate field-soldering or complex wiring disassembly, shall not be permitted.