

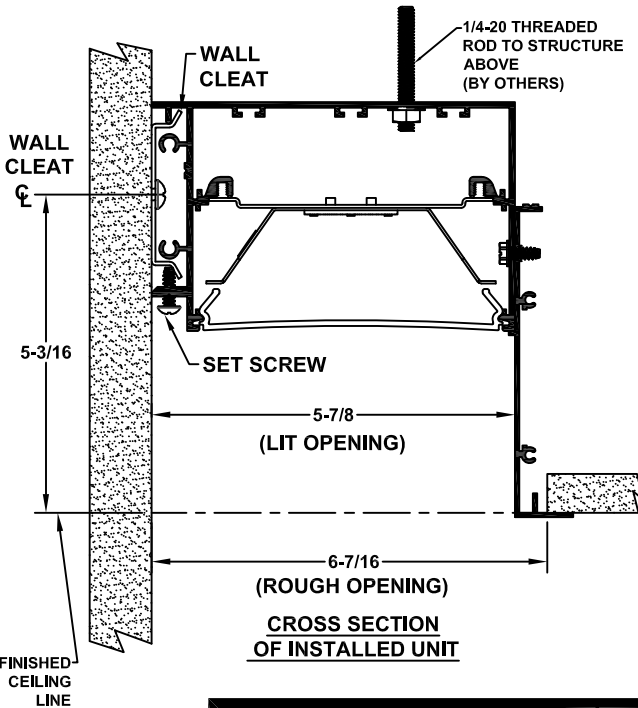
PERIMETER SLOT SERIES PS5 OVERLAP FLANGE MTG OPTION SAFETY AND INSTALLATION INSTRUCTIONS

CAUTION:

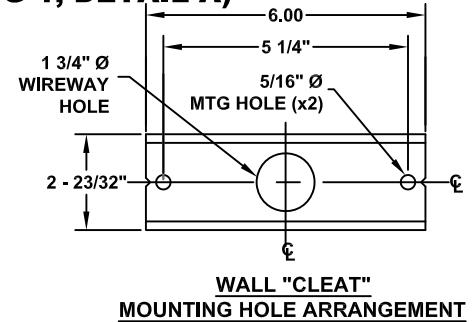
- * BE CERTAIN THAT POWER TO FIELD WIRING HAS BEEN TURNED OFF PRIOR TO INSTALLATION.
- * THIS PRODUCT MUST BE INSTALLED IN ACCORDANCE WITH THE APPLICABLE INSTALLATION CODE BY A PERSON FAMILIAR WITH THE CONSTRUCTION AND OPERATION OF THE PRODUCT AND THE HAZARDS INVOLVED.
- * IT IS INSTALLER'S RESPONSIBILITY TO ENSURE THAT MOUNTING SURFACE IS STRUCTURALLY CAPABLE OF SUPPORTING WEIGHT OF FIXTURE.
- * BE CERTAIN THAT SUPPLY VOLTAGE IS THE SAME AS THAT MARKED ON FIXTURE.

CE PRODUIT DOIT ÊTRE INSTALLÉ SELON LE CODE D'INSTALLATION PERTINENT, PAR UNE PERSONNE QUI CONNAÎT BIEN LE PRODUIT ET SON FONCTIONNEMENT AINSI QUE LES RISQUES INHÉRENTS.

INDIVIDUAL POCKET INSTALLATION INSTRUCTION (PG 1, DETAIL A)



NOTE:
IT IS RECOMMENDED THAT WALL CLEATS BE INSTALLED BEFORE CEILING

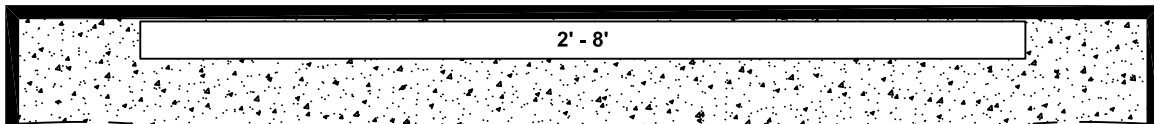


STEP 1:

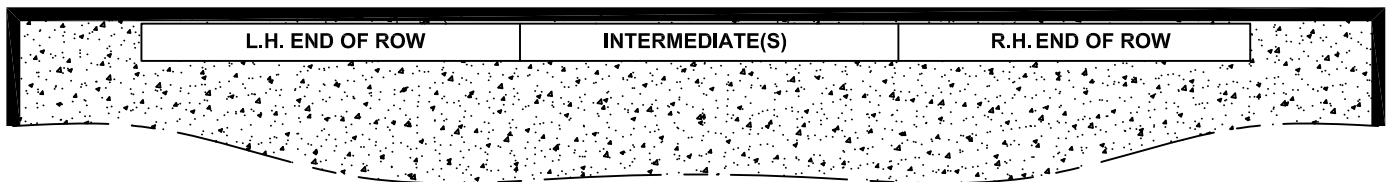
USING WALL CLEAT AS A TEMPLATE, CENTER OVER HORIZONTALLY MOUNTED SWITCH BOX LOCATED PER FACTORY SHOP DRAWING AND MARK TWO (2) MOUNTING HOLES. USE LEVEL TO PLUMB WALL CLEAT. DRILL HOLES APPROPRIATE FOR MOUNTING SURFACE AND FASTENERS TO BE USED. SECURELY ATTACH WALL CLEAT TO WALL. CENTER LINE OF CLEAT SHOULD BE 5-3/16" ABOVE BOTTOM OF FINISHED CEILING. (FIG 1, PG 2)

STEP 2:

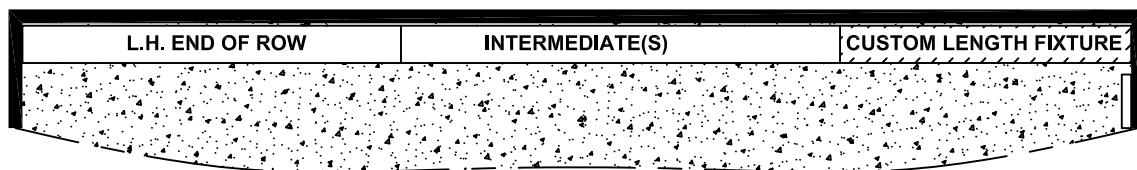
ADD ADDITIONAL WALL CLEAT(S) TO MOUNTING SURFACE AT LOCATION(S) AS SPECIFIED ON FACTORY SHOP DRAWING. TAKE CARE TO ENSURE THAT WALL CLEATS ARE PLUMB AND ON THE SAME CENTER LINE AS FIRST ONE INSTALLED. WALL CLEATS SHOULD BE CENTERED OVER EVERY SET SCREW IN FIXTURE HOUSING AS INDICATED ON SHOP DRAWING. CONSULT YOUR PAL REPRESENTATIVE IF YOU ARE NOT IN POSSESSION OF A FACTORY SHOP DRAWING.



INDIVIDUAL POCKET (IP)
8' OR LESS - DETAIL "A"



CONTINUOUS ROW POCKET (CRP)
>8' IN LENGTH - DETAIL "B"



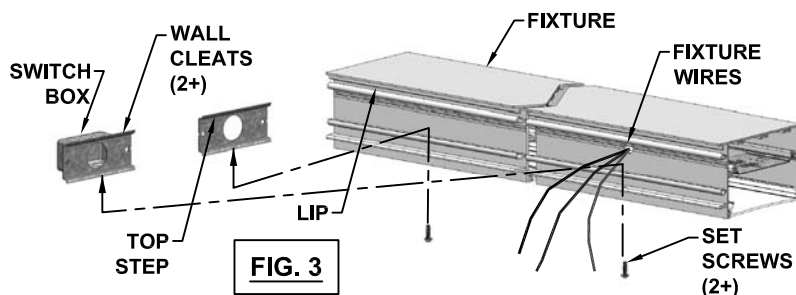
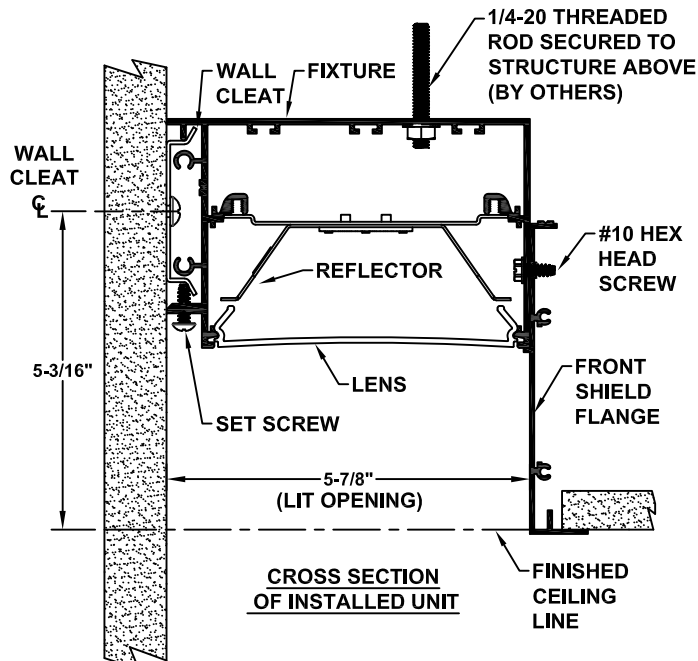
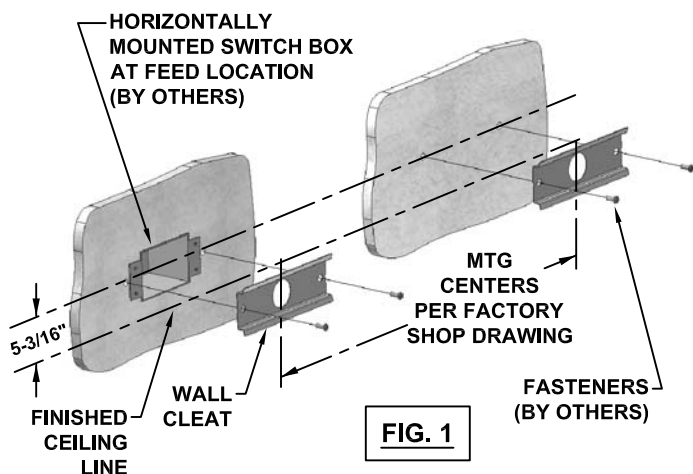
CONTINUOUS ROW WALL TO WALL (CRWW)
DETAIL "C"

NOTE:
SEE (FIG 7, PG 3) FOR MORE INFORMATION ABOUT END OF ROW.



PERIMETER SLOT SERIES PS5 OVERLAP FLANGE MTG OPTION SAFETY AND INSTALLATION INSTRUCTIONS

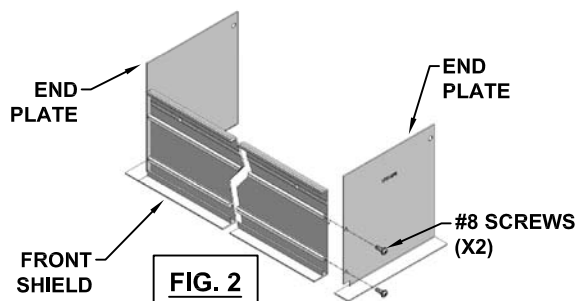
INSTALL WALL CLEATS BEFORE INSTALLING CEILING.



NOTE: FIXTURE IS SHOWN ROTATED 90° FOR ILLUSTRATIVE PURPOSES

STEP 3:

ASSEMBLE FRONT SHIELD & BOTH END PLATES AS SHOWN. (FIG 2)



STEP 4:

SUPPORT FIXTURE AND CONNECT INCOMING SUPPLY WIRES TO FIXTURE WIRES USING 90°C MINIMUM RATED SUPPLY WIRES AND CONNECTORS. ALL WIRE CONNECTIONS SHOULD BE MADE INSIDE JUNCTION BOX. (FIG 3)

STEP 5:

LIFT FIXTURE INTO ROUGH OPENING AND HOOK LIP OF FIXTURE HOUSING OVER TOP STEP OF WALL CLEATS AND HOLD FIXTURE AGAINST WALL. CHECK TO ENSURE THAT EXCESS WIRE LEADS ARE NOT PINCHED AND ARE WITHIN THE CONFINES OF THE SWITCH BOX. TIGHTEN SET SCREWS ONLY ENOUGH TO RETAIN FIXTURE ON WALL CLEATS. (FIG 3)

STEP 6:

SUPPORT FLANGE SIDE OF FIXTURE WITH 1/4-20 THREADED RODS (BY OTHERS) FROM FIXTURE HOUSING TO STRUCTURE ABOVE. ADJUST TO LEVEL FIXTURE. REMOVE LENS AND REFLECTOR AS REQUIRED.

STEP 7:

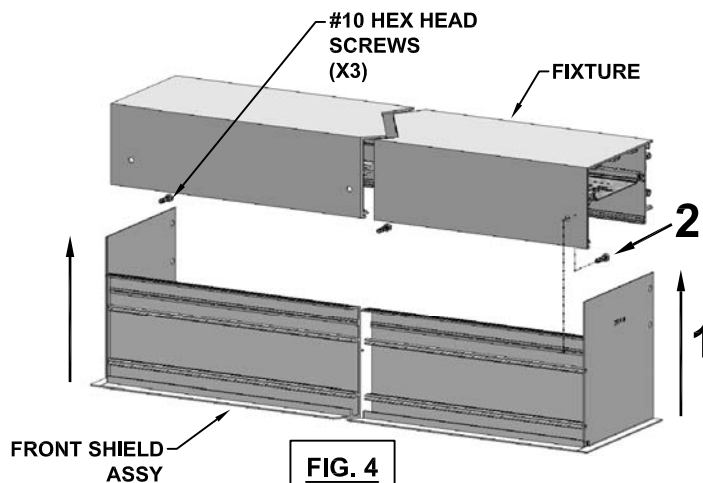
RAISE FRONT SHIELD ASSY. FROM (FIG 2) UP INTO ROUGH OPENING, WORKING THE END PLATES AROUND FIXTURE HOUSING UNTIL ALL FLANGES ARE FLUSH WITH FINISHED CEILING. (FIG 4)

STEP 8:

USE A POINTED TOOL TO LINE UP FRONT SHIELD HOLES WITH FIXTURE HOUSING HOLES AND SECURE SHIELD ASSY. TO FIXTURE HOUSING WITH #10 HEX HEAD SCREWS (PROVIDED).

STEP 9:

TIGHTEN SET SCREWS ENOUGH TO HOLD FIXTURE FIRMLY AGAINST WALL. REPLACE REFLECTOR(S) AND LENS. ENERGIZE CIRCUIT TO VERIFY PROPER OPERATION.



PERIMETER SLOT SERIES PS5 OVERLAP FLANGE MTG OPTION SAFETY AND INSTALLATION INSTRUCTIONS

CONTINUOUS ROW POCKET INSTALLATION INSTRUCTION (PG 1, DETAIL B&C)

CAUTION

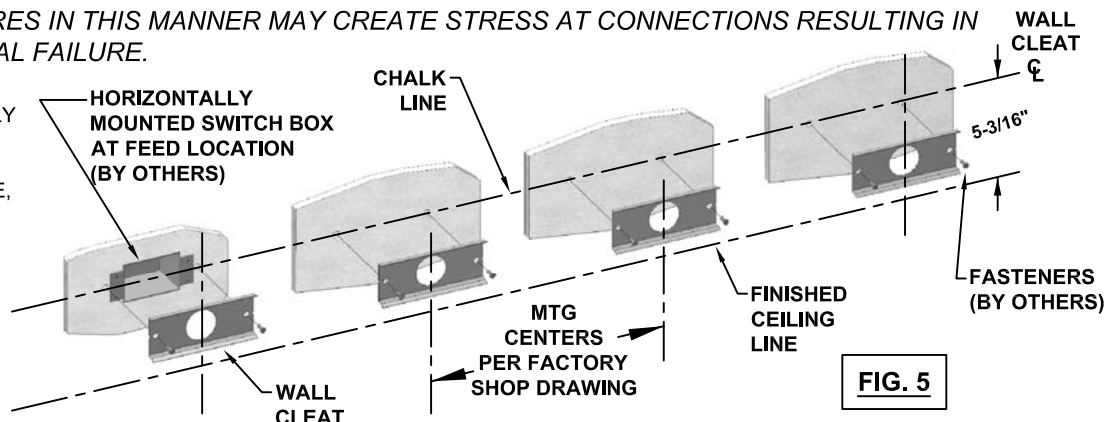
DO NOT ATTEMPT TO ASSEMBLE FIXTURE ROWS ON GROUND AND LIFT INTO POSITION. ATTEMPTING TO ASSEMBLE & INSTALL FIXTURES IN THIS MANNER MAY CREATE STRESS AT CONNECTIONS RESULTING IN DAMAGE AND/OR MECHANICAL FAILURE.

STEP 1:

FROM CENTER LINE OF HORIZONTALLY MOUNTED SWITCH BOX(ES), SNAP A HORIZONTAL CHALK LINE ON WALL, 5-3/16" ABOVE FINISHED CEILING LINE, APPROXIMATELY FULL LENGTH OF FIXTURE ROW TO BE INSTALLED.

STEP 2:

ATTACH WALL CLEATS, AS INSTRUCTED ON OPPOSITE PAGE AND ON CENTERS AS SPECIFIED ON SHOP DRAWING, USING CHALK LINE AS CENTER LINE GUIDE. (FIG 5)



STEP 3

ASSEMBLE FRONT SHIELD AND END PLATES ON END OF ROW SHIELDS AS SHOWN IN (FIG 6).

NOTE: THE FOLLOWING STEPS MAY REQUIRE REMOVAL OF FIXTURE LENS & REFLECTOR TO COMPLETE INSTALLATION AND WIRING.

STEP 4

SUPPORT FIRST (FEED) FIXTURE AND CONNECT INCOMING SUPPLY WIRES TO FIXTURE WIRES USING MIN. 90°C RATED SUPPLY WIRES AND CONNECTORS. ALL WIRE CONNECTIONS SHOULD BE MADE INSIDE JUNCTION BOX. (FIG 3, PG 2)

STEP 5

LIFT FIXTURE INTO ROUGH OPENING AND HOOK LIP OF FIXTURE HOUSING OVER TOP STEP OF WALL CLEATS AND HOLD FIXTURE AGAINST WALL. CHECK TO ENSURE THAT EXCESS WIRE LEADS ARE NOT PINCHED AND ARE WITHIN THE CONFINES OF THE SWITCH BOX. TIGHTEN SET SCREWS ONLY ENOUGH TO RETAIN FIXTURE ON CLEAT. (FIG 3, PG 2) SUPPORT FLANGE SIDE OF FIXTURE WITH 1/4-20 THREADED RODS FROM FIXTURE HOUSING TO STRUCTURE ABOVE. ADJUST TO LEVEL FIXTURE. (FIG 6)

STEP 6

POSITION SECOND (NEXT) FIXTURE SUCH THAT IT ALIGNS WITH THE JOINT END OF THE FIRST (PREVIOUS) FIXTURE AS ILLUSTRATED. (FIG 6)

STEP 7

PLUG FIXTURE WIRE HARNESSSES TOGETHER AND PUSH EXCESS WIRE BACK INTO FIXTURE WIREWAY. (FIG 6)

STEP 8

PUSH FIXTURES TIGHTLY TOGETHER, MAKING SURE THAT ALIGNMENT SPLICES AND CONNECTION CHANNEL SLIDE INTO THE INTERIOR TRACKS OF THE FIRST FIXTURE. THE ALIGNMENT SPLICES SHOULD SPAN THE FIXTURE JOINT WHEN FIXTURES ARE PUSHED TOGETHER. SECURE FIXTURES TOGETHER WITH 1/4-20 FLANGE NUT JOINING CONNECTION CHANNEL TO CONNECTION BRACKET. (FIG 6)

STEP 9

CONTINUE TO INSTALL AND ASSEMBLE FIXTURE ROW FOLLOWING STEPS 6 THROUGH 8. (FIG 6)

STEP 10

ONCE ALL FIXTURES IN ROW ARE INSTALLED, TIGHTEN SET SCREWS ON ALL FIXTURES ONLY ENOUGH TO HOLD FIXTURES SNUG AGAINST WALL.

STEP 11

RAISE FRONT SHIELD ASSY. (FIG 2, PG 2) UP INTO ROUGH OPENING, WORKING THE END PLATES (ON END OF ROW SHIELDS) AROUND FIXTURE HOUSING UNTIL ALL FLANGES ARE FLUSH WITH FINISHED CEILING. (FIG 4, PG 2)

STEP 12

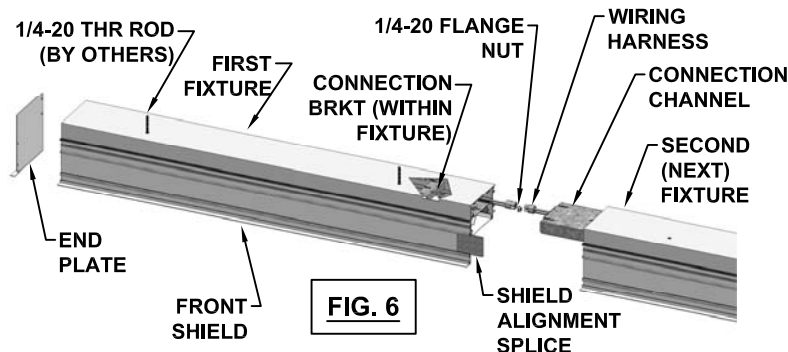
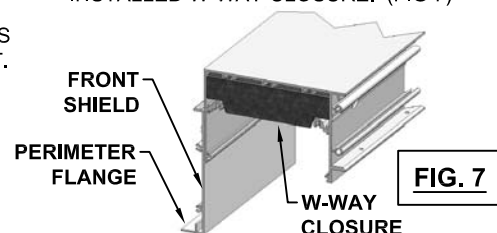
USE A POINTED TOOL TO LINE UP FRONT SHIELD HOLES WITH FIXTURE HOUSING HOLES AND SECURE SHIELD ASSY. TO FIXTURE HOUSING WITH #10 HEX HEAD SCREWS (PROVIDED) (FIG 4)

STEP 13:

REPLACE REFLECTORS & LENSES. ENERGIZE CIRCUIT TO CHECK FOR PROPER OPERATION.

NOTE:

IF FIXTURE BUTTS TO WALL NO END PLATE IS REQUIRED. END OF ROW FIXTURES WILL BE PROVIDED WITH FACTORY INSTALLED W-WAY CLOSURE. (FIG 7)

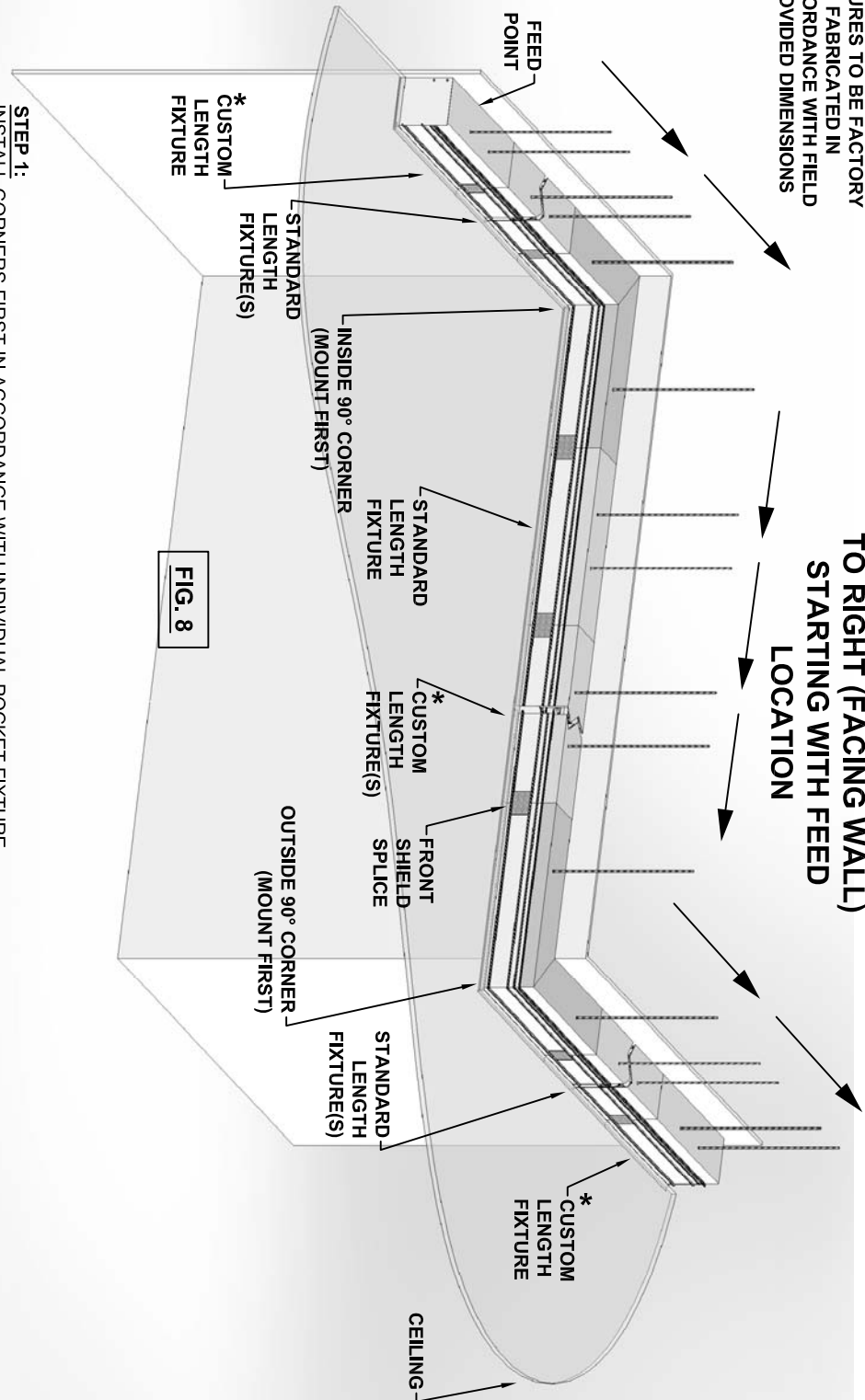


PERIMETER SLOT SERIES PS5 OVERLAP FLANGE MTG OPTION SAFETY AND INSTALLATION INSTRUCTIONS

PATTERN INSTALLATION INSTRUCTIONS [REF FIG 8]

* CUSTOM LENGTH
FIGURES TO BE FACTORY
FABRICATED IN
ACCORDANCE WITH FIELD
PROVIDED DIMENSIONS

INSTALL CORNERS FIRST AND
THEN WORK FROM LEFT
TO RIGHT (FACING WALL)
STARTING WITH FEED
LOCATION



STEP 1:
INSTALL CORNERS FIRST IN ACCORDANCE WITH INDIVIDUAL POCKET FIXTURE
INSTRUCTIONS. (FIG 3, PG 2)

STEP 2:
MOUNT FEED FIXTURE IN ACCORDANCE WITH INDIVIDUAL POCKET FIXTURE INSTRUCTIONS. (FIG 3, PG 2) (LEAVE ALL
CLEAT SET SCREWS LOOSE AT THIS TIME TO ALLOW FIXTURES TO BE PULLED TIGHTLY TOGETHER).

STEP 3:
CONTINUE TO MOUNT BALANCE OF FIXTURES IN ACCORDANCE WITH CONTINUOUS ROW
INSTRUCTIONS. (TIGHTEN CLEAT SET SCREWS ONCE ALL FIXTURE JOINTS ARE TIGHT TOGETHER).

STEP 4:
MOUNT FRONT SHIELDS TO FIXTURES. ENSURE THAT ALIGNMENT SPLICE PROVIDED SPANS SHIELD JOINT. (FIG 8)

STEP 5:
REPLACE REFLECTORS AND LENSES.

STEP 6:
ENERGIZE CIRCUIT AND VERIFY PROPER OPERATION.

