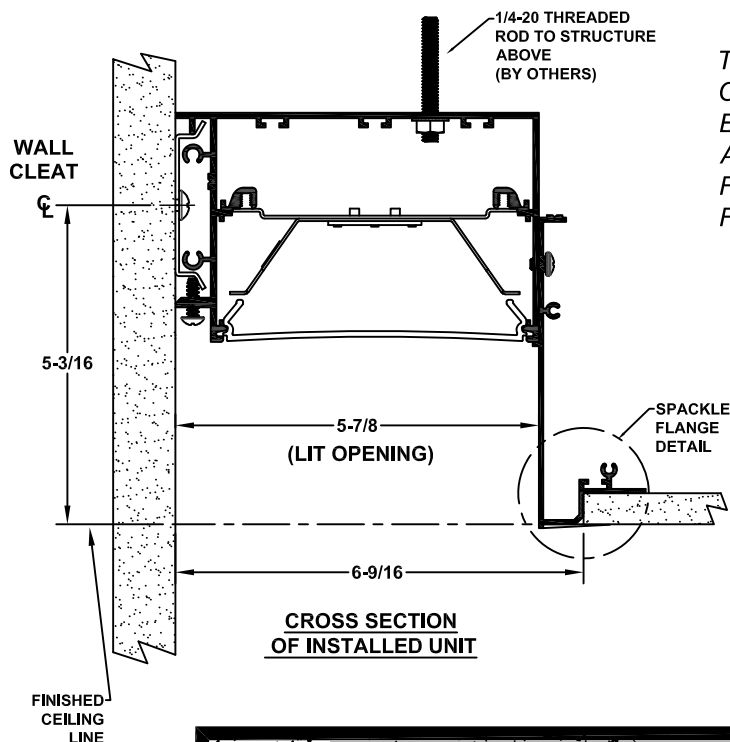


PERIMETER SLOT SERIES PS5 SPACKLE FLANGE MTG OPTION SAFETY AND INSTALLATION INSTRUCTIONS

CAUTION:

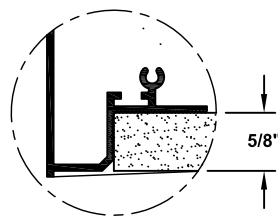
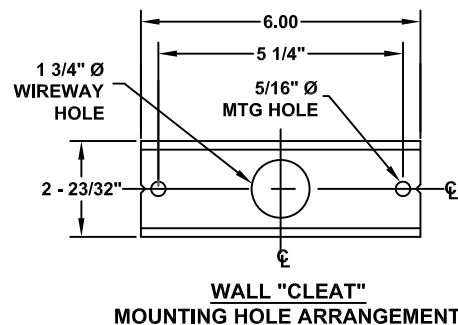
- * BE CERTAIN THAT POWER TO FIELD WIRING HAS BEEN TURNED OFF PRIOR TO INSTALLATION.
- * THIS PRODUCT MUST BE INSTALLED IN ACCORDANCE WITH THE APPLICABLE INSTALLATION CODE BY A PERSON FAMILIAR WITH THE CONSTRUCTION AND OPERATION OF THE PRODUCT AND THE HAZARDS INVOLVED.
- * IT IS INSTALLER'S RESPONSIBILITY TO ENSURE THAT MOUNTING SURFACE IS STRUCTURALLY CAPABLE OF SUPPORTING WEIGHT OF FIXTURE.
- * BE CERTAIN THAT SUPPLY VOLTAGE IS THE SAME AS THAT MARKED ON FIXTURE.

CE PRODUIT DOIT ÊTRE INSTALLÉ SELON LE CODE D'INSTALLATION PERTINENT, PAR UNE PERSONNE QUI CONNAÎT BIEN LE PRODUIT ET SON FONCTIONNEMENT AINSI QUE LES RISQUES INHÉRENTS.

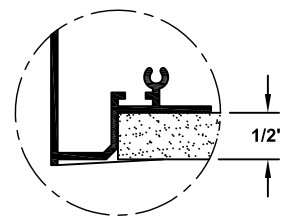


**CROSS SECTION
OF INSTALLED UNIT**

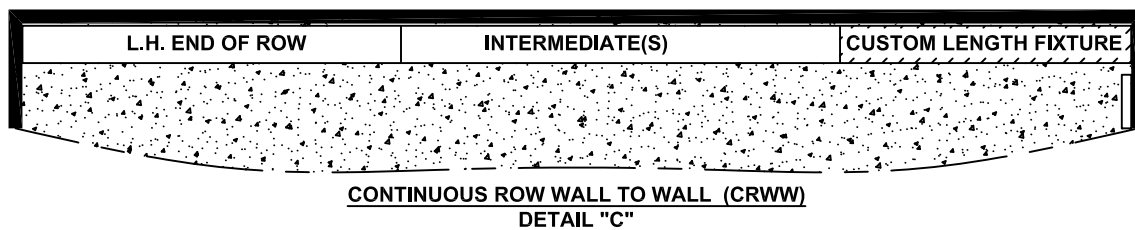
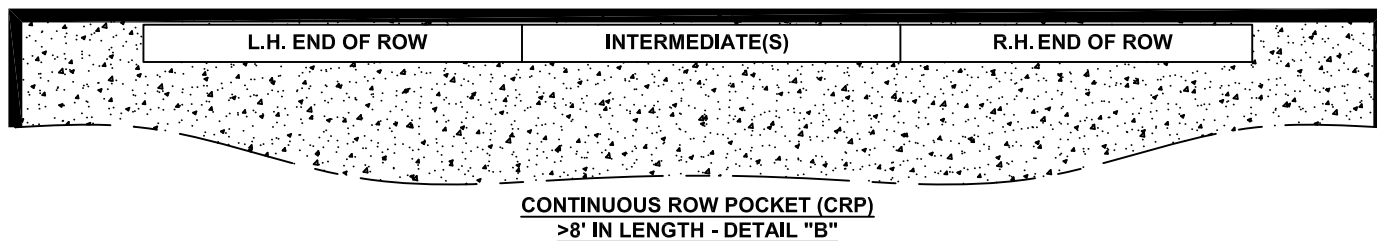
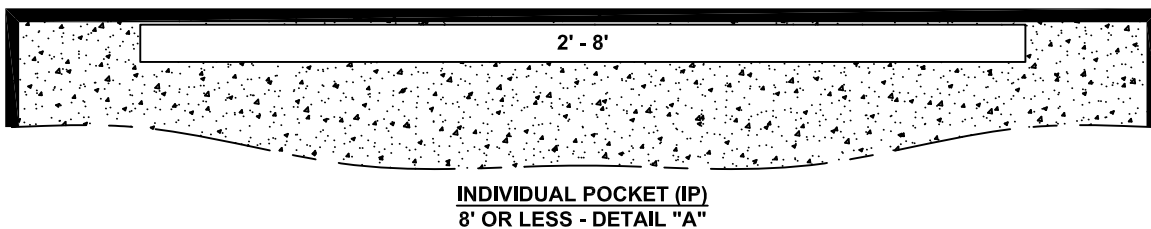
NOTE:
THE FIXTURE MUST BE COMPLETELY INSTALLED BEFORE DRYWALL CAN BE ATTACHED TO CEILING FRAMING AND FIXTURE FLANGES.



**DETAIL 1
5/8" DRYWALL CEILING
"SF5"**



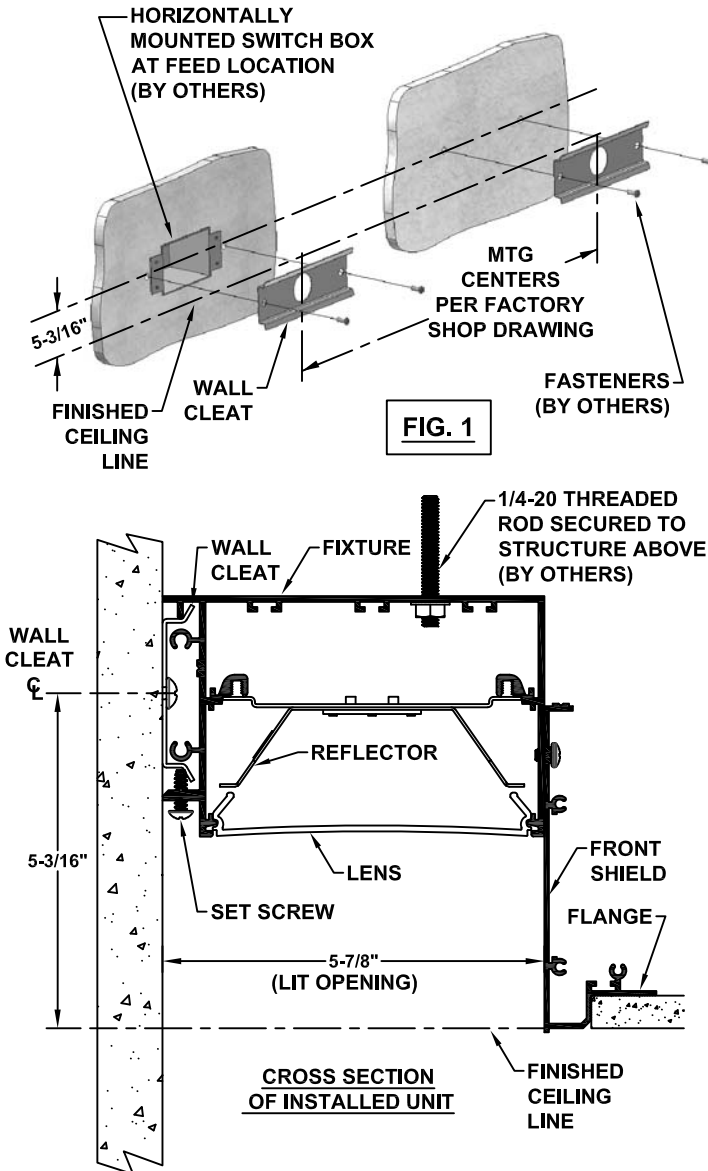
**DETAIL 2
1/2" DRYWALL CEILING
"SF1"**



PERIMETER SLOT SERIES PS5 SPACKLE FLANGE MTG OPTION SAFETY AND INSTALLATION INSTRUCTIONS

INDIVIDUAL POCKET INSTALLATION INSTRUCTION (PG 1, DETAIL A)

INSTALL DRYWALL CEILING AFTER MOUNTING ALL FIXTURES



STEP 1:

USING WALL CLEAT AS A TEMPLATE, CENTER OVER HORIZONTALLY MOUNTED SWITCH BOX LOCATED PER FACTORY SHOP DRAWING AND MARK TWO (2) MOUNTING HOLES. USE LEVEL TO PLUMB WALL CLEAT. DRILL HOLES APPROPRIATE FOR MOUNTING SURFACE AND FASTENERS TO BE USED. SECURELY ATTACH WALL CLEAT TO WALL. CENTER LINE OF CLEAT SHOULD BE 5-3/16" ABOVE BOTTOM OF FINISHED CEILING. (FIG 1)

STEP 2:

ADD ADDITIONAL WALL CLEAT(S) TO MOUNTING SURFACE AT LOCATION(S) AS SPECIFIED ON FACTORY SHOP DRAWING. TAKE CARE TO ENSURE THAT WALL CLEATS ARE PLUMB AND ON THE SAME CENTER LINE AS FIRST ONE INSTALLED. WALL CLEATS SHOULD BE CENTERED OVER EVERY SET SCREW IN FIXTURE HOUSING AS INDICATED ON SHOP DRAWING. CONSULT YOUR PAL REPRESENTATIVE IF YOU ARE NOT IN POSSESSION OF A FACTORY SHOP DRAWING.

STEP 3:

CONNECT INCOMING SUPPLY WIRES TO FIXTURE WIRES USING 90°C MINIMUM RATED SUPPLY WIRES AND CONNECTORS. ALL WIRE CONNECTIONS SHOULD BE MADE INSIDE JUNCTION BOX. (FIG 2)

STEP 4:

HOOK LIP OF FIXTURE HOUSING OVER TOP STEP OF WALL CLEATS AND HOLD FIXTURE AGAINST WALL. CHECK TO ENSURE THAT EXCESS WIRE LEADS ARE NOT PINCHED AND ARE WITHIN THE CONFINES OF THE SWITCH BOX. INSTALL SET SCREWS AND TIGHTEN ONLY ENOUGH TO HOLD FIXTURE SNUG AGAINST WALL. (FIG 2)

STEP 5:

SUPPORT FLANGE SIDE OF FIXTURE WITH 1/4-20 THREADED RODS FROM FIXTURE HOUSING TO STRUCTURE ABOVE. ADJUST TO LEVEL FIXTURE. REMOVE/REPLACE LENS AND REFLECTOR AS REQUIRED.

STEP 6:

INSTALL FRONT SHIELD FLANGE WITH #10-24 SCREWS & LOCKWASHERS PROVIDED. (FIG 3)

STEP 7:

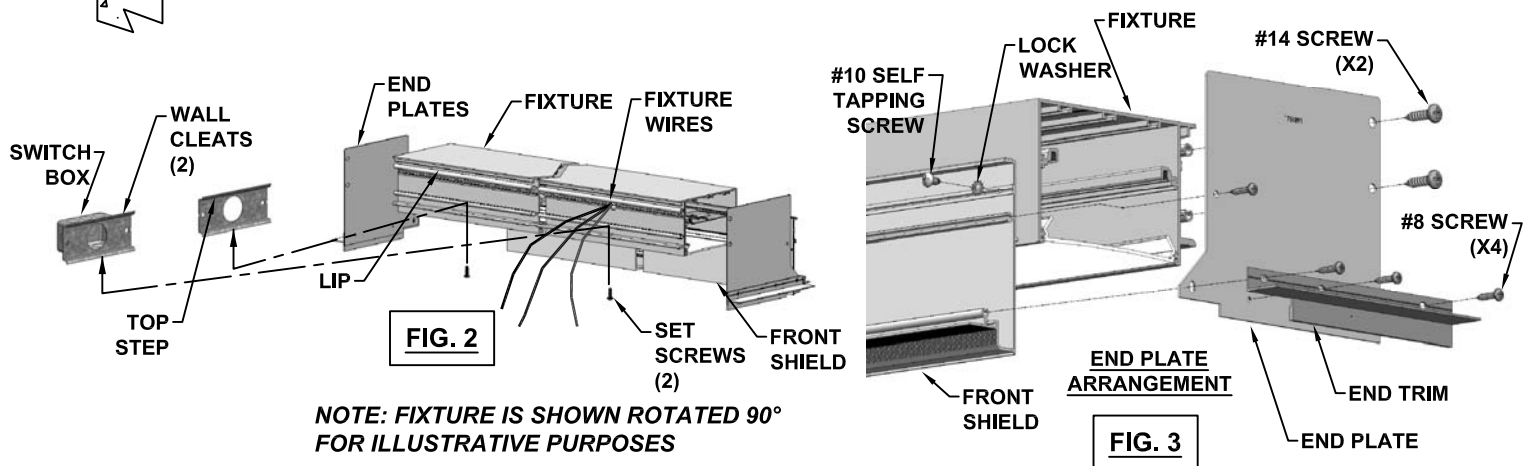
INSTALL END PLATES AND END TRIMS WITH SCREWS PROVIDED. (FIG 3)

STEP 8:

ENERGIZE CIRCUIT AND VERIFY PROPER OPERATION.

STEP 9:

CEILING CONTRACTOR TO ATTACH DRYWALL TO PERIMETER FLANGE SERRATED SECTION. TAPE & FLOAT TO PROVIDE A SEAMLESS APPEARANCE.



NOTE: FIXTURE IS SHOWN ROTATED 90° FOR ILLUSTRATIVE PURPOSES



Precision Architectural Lighting

Tel (713) 946-4343 Fax (713) 946-4441 www.pal-lighting.com 4830 Timber Creek Drive Houston, Texas 77017

PAL RESERVES THE RIGHT TO CHANGE PRODUCT DESIGN AND SPECIFICATIONS. CONTACT FACTORY FOR MOST RECENT PRODUCT INFORMATION.

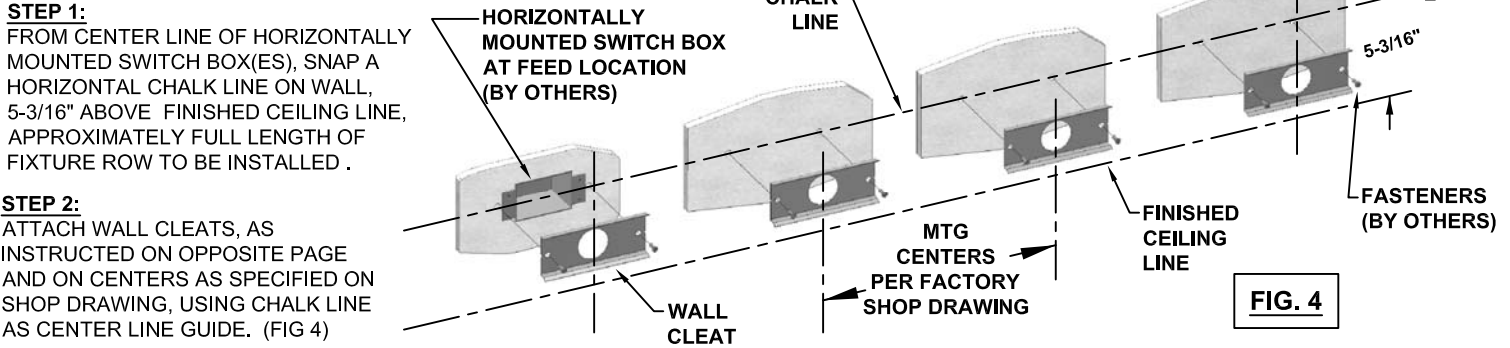
3750220-2 1/21

PERIMETER SLOT SERIES PS5 SPACKLE FLANGE MTG OPTION SAFETY AND INSTALLATION INSTRUCTIONS

CONTINUOUS ROW POCKET INSTALLATION INSTRUCTION (PG 1, DETAIL B&C)

CAUTION

DO NOT ATTEMPT TO ASSEMBLE FIXTURE ROWS ON GROUND AND LIFT INTO POSITION. ATTEMPTING TO ASSEMBLE & INSTALL FIXTURES IN THIS MANNER MAY CREATE STRESS AT CONNECTIONS RESULTING IN DAMAGE AND/OR MECHANICAL FAILURE.



STEP 3
MOUNT FIRST (FEED) FIXTURE IN ACCORDANCE WITH INDIVIDUAL POCKET INSTRUCTIONS. (PG 2) LEAVE SET SCREWS ON ALL FIXTURES LOOSE AT THIS TIME. (FIG 5)

STEP 4:
POSITION SECOND (NEXT) FIXTURE SUCH THAT IT ALIGNS WITH THE JOINT END OF THE FIRST (PREVIOUS) FIXTURE AS ILLUSTRATED. LEAVE SET SCREWS ON ALL FIXTURES LOOSE AT THIS TIME. (FIG 5)

STEP 5:
PLUG FIXTURE WIRE HARNESSES TOGETHER AND PUSH EXCESS WIRE BACK INTO FIXTURE WIREWAY.

STEP 6:
PUSH FIXTURES TIGHTLY TOGETHER, MAKING SURE THAT ALIGNMENT SPLICES AND CONNECTION CHANNEL SLIDE INTO THE INTERIOR TRACKS OF THE FIRST FIXTURE. THE ALIGNMENT SPLICES SHOULD SPAN THE FIXTURE JOINT WHEN FIXTURES ARE PUSHED TOGETHER. SECURE FIXTURES TOGETHER WITH 1/4-20 FLANGE NUT SECURING CONNECTION CHANNEL TO CONNECTION BRACKET. (FIG 5)

NOTE:
MAKE SURE EXCESS WIRE FROM WIRE HARNESS IS PUSHED BACK INTO FIXTURE WIREWAY CHAMBER AND IS NOT 'PINCHED' BETWEEN FIXTURES.

STEP 7:
CONTINUE TO INSTALL AND ASSEMBLE FIXTURE ROW FOLLOWING STEPS 4 THROUGH 6.

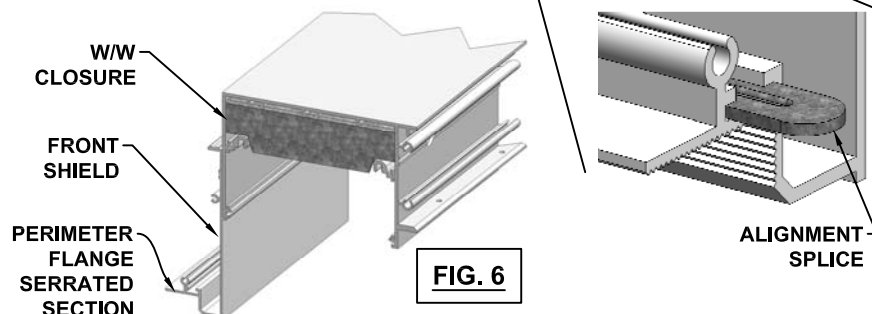
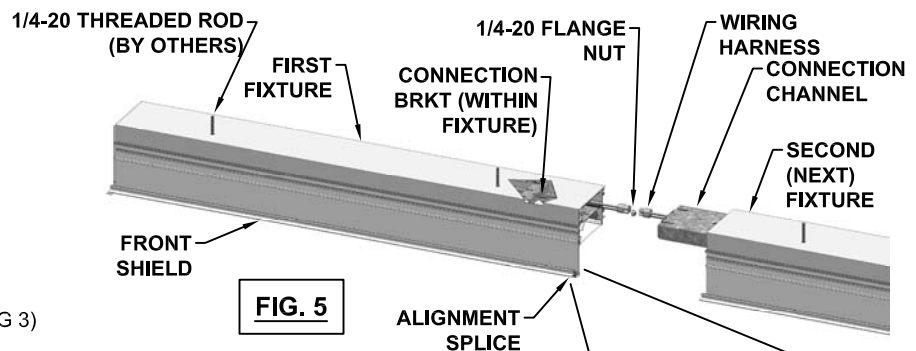
STEP 8:
ONCE ALL FIXTURES IN ROW ARE INSTALLED, TIGHTEN SET SCREWS ON ALL FIXTURES ONLY ENOUGH TO HOLD FIXTURES SNUG AGAINST WALL.

STEP 9:
INSTALL FRONT SHIELDS AS INSTRUCTED ON PAGE 2, (FIG 3)

STEP 10:
IF END OF FIXTURE IS TO BE JOINED TO CEILING, INSTALL END PLATES AND END TRIMS AS ILLUSTRATED IN (FIG 3 - PG 2). IF FIXTURE BUTTS TO WALL NO END PLATE IS REQUIRED. END OF ROW FIXTURES WILL BE PROVIDED WITH FACTORY INSTALLED W-WAY CLOSURE. (FIG 6)

STEP 11:
REPLACE REFLECTORS & LENSES. ENERGIZE CIRCUIT AND CHECK FOR PROPER OPERATION.

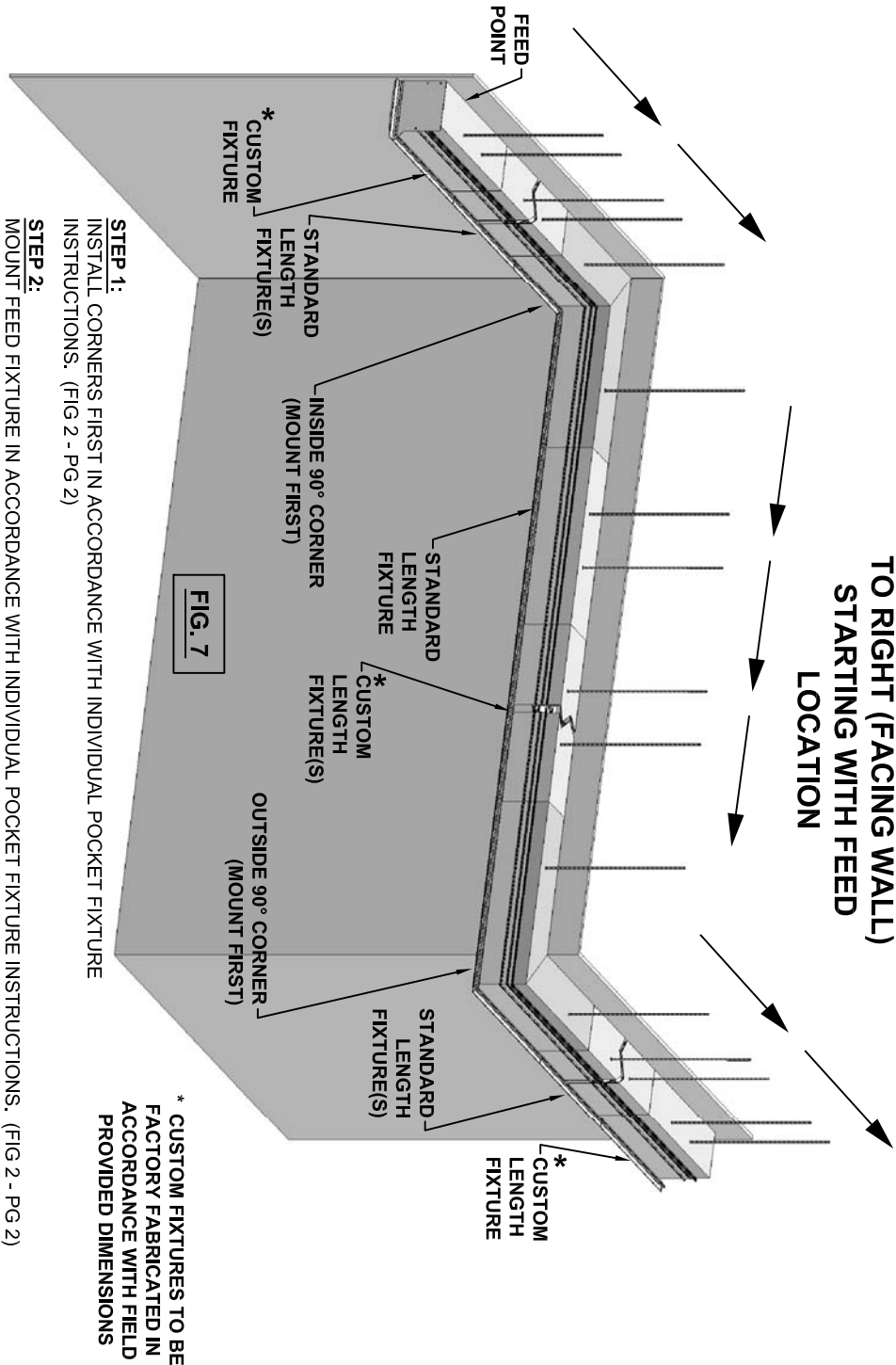
STEP 12:
CEILING CONTRACTOR TO ATTACH DRYWALL TO PERIMETER FLANGE SERRATED SECTION. TAPE AND FLOAT TO PROVIDE A SEAMLESS APPEARANCE.



PERIMETER SLOT SERIES PS5 SPACKLE FLANGE MTG OPTION SAFETY AND INSTALLATION INSTRUCTIONS

PATTERN INSTALLATION INSTRUCTIONS [REF FIG 7]

INSTALL CORNERS FIRST AND
THEN WORK FROM LEFT
TO RIGHT (FACING WALL)
STARTING WITH FEED
LOCATION



STEP 1:
INSTALL CORNERS FIRST IN ACCORDANCE WITH INDIVIDUAL POCKET FIXTURE INSTRUCTIONS. (FIG 2 - PG 2)

STEP 2:
MOUNT FEED FIXTURE IN ACCORDANCE WITH INDIVIDUAL POCKET FIXTURE INSTRUCTIONS. (FIG 2 - PG 2)
(LEAVE CLEAT SET SCREWS LOOSE AT THIS TIME TO ALLOW FIXTURES TO BE PULLED TIGHTLY TOGETHER).

STEP 3:
CONTINUE TO MOUNT BALANCE OF FIXTURES IN ACCORDANCE WITH CONTINUOUS ROW INSTRUCTIONS. (TIGHTEN CLEAT SET SCREWS ONCE ALL FIXTURE JOINTS ARE TIGHT TOGETHER).

STEP 4:
MOUNT FRONT SHIELDS TO FIXTURES. ENSURE THAT ALIGNMENT SPLICE(S) PROVIDED SPANS SHIELD JOINT. (FIG 5 - PG 3)

STEP 5:
SECURE END PLATES AND END TRIMS AS REQUIRED. (FIG 3 - PG 2)

STEP 6:
ENERGIZE CIRCUIT AND VERIFY PROPER OPERATION.

STEP 7:
CEILING CONTRACTOR TO ATTACH DRYWALL TO PERIMETER FLANGE SERRATED SECTION. TAPE AND FLOAT TO PROVIDE A SEAMLESS APPEARANCE.