

lasso infinite series



LED linear lighting
Customizable architectural lighting

PAL™
ARCHITECTURAL

Quick specs:

360 - 1280 Lm/Ft

3000K / 3500K / 4000K

L70 90,000 hours

120 - 277V / 0-10V dimming available

Dry, indoor use IP20



Key feature:

16 Customizable Widths

Solutions for any architectural perimeter, decorative/ accent linear lighting needs to compliment the form of the architecture. Ideal for curved pathways, space defining show pieces, and a variety of ceiling heights and mounting applications.

3" | 3.2" | 3.4" | 3.6" | 3.8" | 4" | 4.2" | 4.4" | 4.6" | 4.8" | 5" | 5.2" | 5.4" | 5.6" | 5.8" | 6"

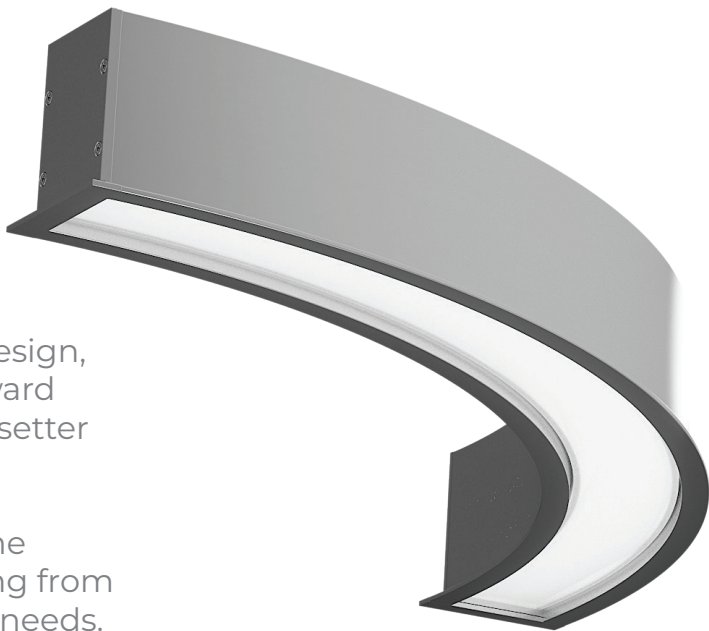
3" Min.

6" Max.

To infinity and beyond...

With our lasso series we've made design, spec, and installation a straightforward process - quickly becoming a trendsetter for architectural builds.

The lasso infinity extends these same features with variable widths ranging from 3" - 6" for even tighter specification needs.



Height profiles:
3.937"
OR
5.12"



We'll show you the ropes

Installation templates

Each lasso infinite order ships with a custom “click-together” template of your design, lowering the risk of installation errors.

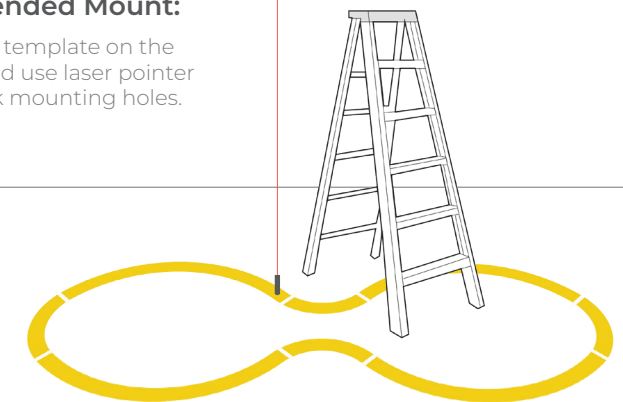
Surface/Recessed Mount:

Apply the template to the ceiling surface to trace outline and/or mark mounting holes.



Suspended Mount:

Lay out template on the floor and use laser pointer to mark mounting holes.



What will you lasso?

Ambient, way-finding, accent, perimeter lighting, and beyond.

Designing made easier with multiple joiner options and custom linear lengths. Accentuate the shape and form of the architecture, help guide and direct throughout a commercial space, or add a bespoke show piece that elevates the visual interest of a room. The lasso infinite series unlocks your full potential for lighting spaces. So, what will you lasso?



90 DEGREE CURVE

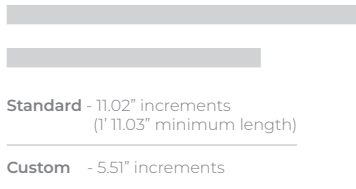
60 DEGREE CURVE

45 DEGREE CURVE

30 DEGREE CURVE



JOINERS



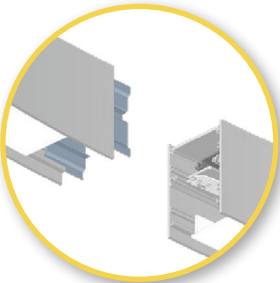
LINEAR



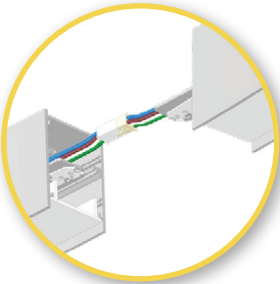
Y BENDS



V BENDS



Tool-less joiner/linear form connection.



Electrical quick-connect.



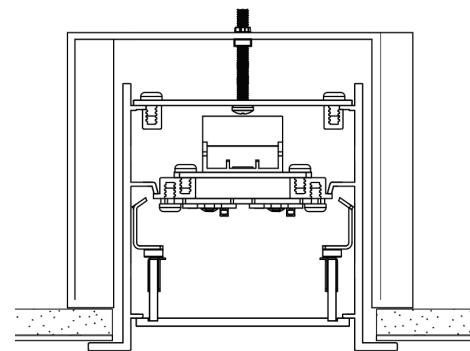


Recessed mounting

A thin flange, part of the linear form, extends $\frac{1}{2}$ " on both sides of the extrusion.

Mounting clips ensure the right fit for most ceiling types/spaces with minimal installation complications.*

Linear height : 3.937"
Ceiling types : Drywall, metal pan, concrete, timber, and T-bar grid (slot mounting runs)



*Mounting clips support up to 4" width profile. All other widths require custom recessed mounting support.



Suspended mounting

Ideal to create visual interest, provide helpful pathway lighting, and/or provide direct/indirect lighting

Linear height :

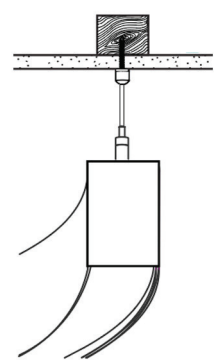
3.937" (short)

OR

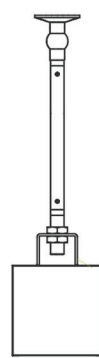
5.12" (tall)

Ceiling types :

Drywall, metal pan, concrete, timber, and T-grid.



Aircraft cable



Stem*

*Stems available from PAL Architectural at special request.

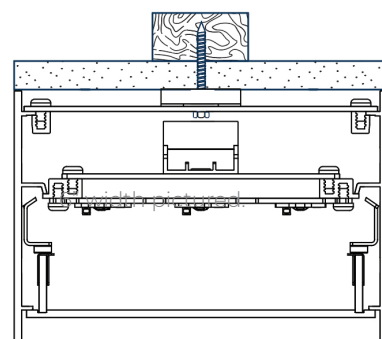


Surface mounting

Installs directly onto the ceiling surface with the help of small mounting brackets. The brackets create a buffer to reduce the risk of linear distortion due to over-tightening.

Linear height :
 3.937" (short)
 OR
 5.12" (tall)

Ceiling types :
 Drywall, metal pan, concrete, and timber.





Data Table

To Infinity... & Beyond

The lasso infinite series is an everyday linear light for your “not-so-everyday” customers. 10 year warranty, backed by 100+ years of craftsmanship experience, and your personal lighting experts to lead the project from start to finish.

Output	Luminous Flux (Delivered Lumens - Direct)	MO 1900 LM	HO 3500 LM
	CRI	90+	
	Lumen Maintenance	L80 B20 89,000 Hours @25°C	
Warranty	10 years		
Electrical	Power Consumption	Between 10 and 14 w/ft	
	Voltage Input Range	240V	
	Control Methods	0-10V / Dali / DSI / DMX / Dimmer Switch / Motion Sensors Bluetooth Mesh / Casambi	
	Total Harmonic Distortion THD	9,8% max	
	Approvals	UL	
Physical	Dimensions (Height and Width)	3" - 6" wide (in 0.2" increments) x 3.937" or 5.12" high	
	Housing	Aluminum extrusion with powder-coated finish: Black / White texture, Silver, (or) optional selected powder-coated finishes	
	Diffuser	Frosted acrylic lens	
	Operating Temperature	-13°F to 95°F	

Ask your local PAL Architectural sales rep for 3rd party custom control integration compatibilities.





PAL Architectural delivers a hands-on, turnkey approach to architectural, high-end, specification grade luminaires.



4830 Timber Creek Drive,
Houston, TX 77017
P: 713.946.4343
F: 713.946.4441
www.pal-lighting.com



PAL Architectural is a commercial architectural lighting company under PAL Global -
PAL Global is a technology company headquartered in Australia with home offices and manufacturing facilities in
the U.S. / E.U. / CN / AUS, specializing in advanced lighting technologies, bespoke designs, and heightening living spaces.