



ACCENTRA  
WET LOCATION

**PAL**  
ARCHITECTURAL

# ACCENTRA WET LOCATION

## WELCOME TO THE GREAT OUTDOORS

Introducing the new Accentra WL66 Wet Location Series

A stylish, rotatable outdoor fixture that continues the look of our popular indoor accentra series. Resistant to moisture, dust, insects and impact, the Accentra WL66 is an architectural-grade solution that's ideal for demanding outdoor applications.

- Compact shape with aimable housing and light throw
- Individual fixtures and continuous modular rows
- Multiple mountings and optical controls
- Engineered for durability and superior performance
- Standard black, white, bronze and ultrasonic clear, with available custom finishes

## ALL-WEATHER DURABILITY

The meticulously designed WL66 fixture is ruggedly built and sealed for use in demanding environments; IP66-rated against rain, snow, seawater, dust and insect ingress; and IK10-rated for impact resistance.

- .100"-thick extruded housing for strength
- .125"-thick polycarbonate lens for impact resistance
- All-aluminium or -stainless steel components for corrosion resistance

## LIGHT FROM ANY ANGLE

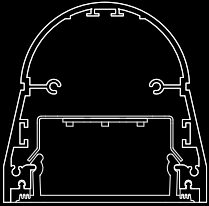
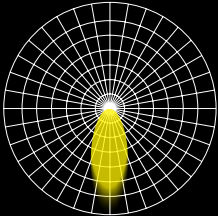
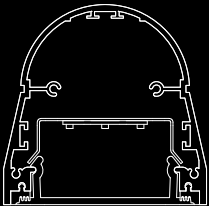
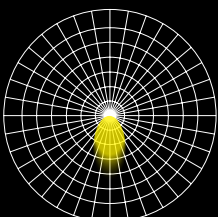
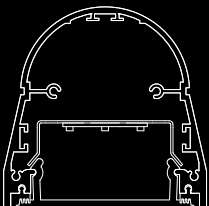
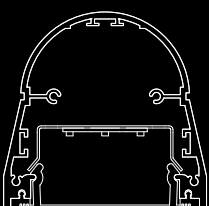
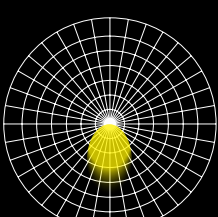
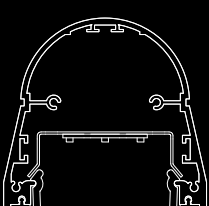
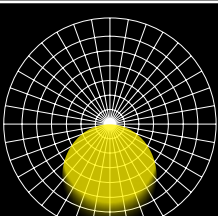
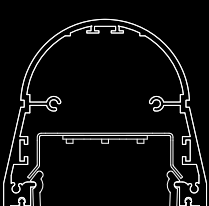
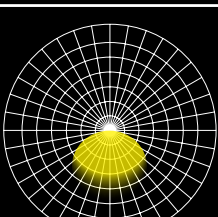
With its innovative rotating design, excellent performance and flexible mounting options, the Accentra WL66 is well-suited to virtually any outdoor application.



- 345° range of rotation delivers light where it's needed
- Wall, ceiling, stem and extended-arm mounting options
- Superior performance, with efficacies as high as 118 Lumens/Watt

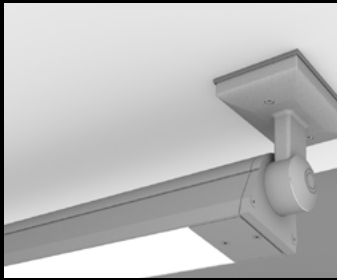


# ACCENTRA WET LOCATION PHOTOMETRIC PERFORMANCE CHART

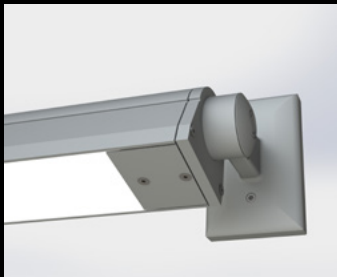
Accentra WL66 Fixture	Light Distribution	Light Output	Distribution Curve	Delivered Lumens / 1'	Lumens / Watt (Efficacy)	Input Watts (Watts / 1')
	NB = Narrow Beam	High (HO)		921	111.4	8.3
	NB = Narrow Beam	Medium (MO)		603	118.2	5.1
	MB = Medium Beam	High (HO)		809	97.9	8.3
	MB = Medium Beam	Medium (MO)		531	103.6	5.1
	WB = Wide Beam	High (HO)		719	87.1	8.3
	WB = Wide Beam	Medium (MO)		469	91.9	5.1

Custom Outputs are available  
(Contact Factory)

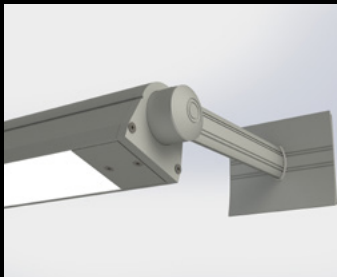
# ACCENTRA WET LOCATION



SURFACE/CEILING



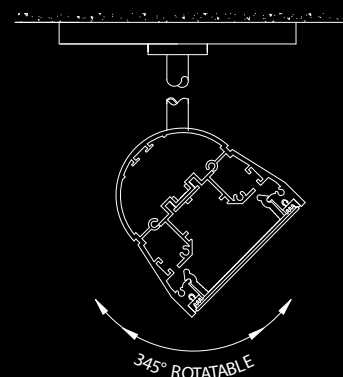
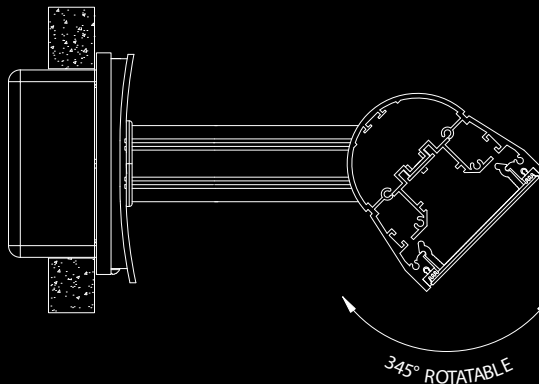
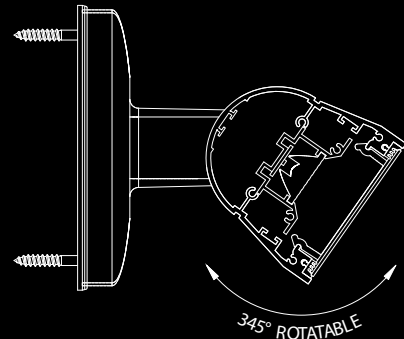
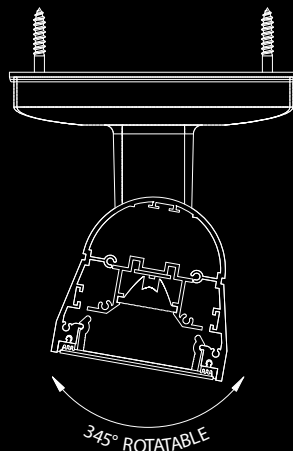
SURFACE/WALL



EXTENDED WALL



RIGID STEM



4830 Timber Creek Drive,  
Houston, TX 77017  
P: 713.946.4343  
F: 713.946.4441  
[www.pal-lighting.com](http://www.pal-lighting.com)

**PAL**  
ARCHITECTURAL

# OUTDOOR SPECIFICATIONS

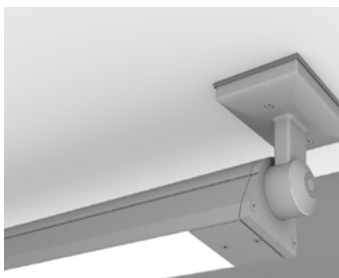
## SPECIFICATION / CATALOG PAGE FORM

[Specification form](#) configurator:  
Accentra Wet Location - IP66 Series

---

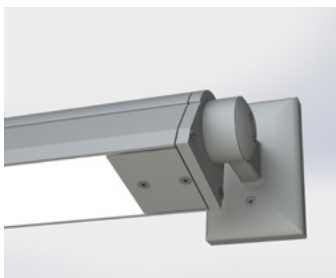
## SPECIFICATION FORMS

CEILING MOUNT



[Spec form for Ceiling Mount](#)

WALL MOUNT



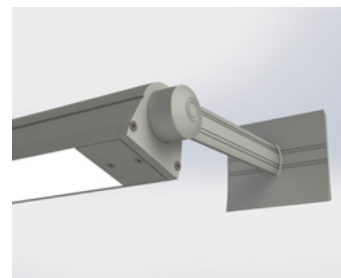
[Spec form for Wall Mount](#)

SUSPENDED (STEM) MOUNT



[Spec form for Stem Mount](#)

EXTENDED MOUNT



[Spec form for Extended Mount](#)

---

## INSTALLATION INSTRUCTIONS

Installation for [Ceiling](#), [Wall](#), [Suspended](#) and [Extended](#) Mountings

---

## STANDARD FIXTURE LENGTHS & MOUNTING CENTERS

[Ceiling, Wall, Suspended and Extended Mountings](#)

---

## PHOTOMETRY OVERVIEW

[Photometric Data Narrow, Medium, Wide Beams](#)

---



4830 Timber Creek Drive,  
Houston, TX 77017  
P: 713.946.4343  
F: 713.946.4441  
[www.pal-lighting.com](http://www.pal-lighting.com)

**PAL**  
ARCHITECTURAL

