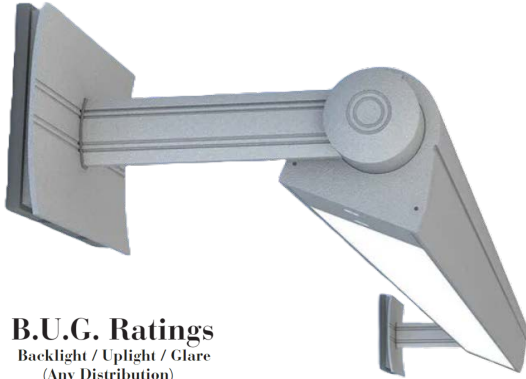


ACCENTRA WET LOCATION SERIES



B.U.G. Ratings

Backlight / Uplight / Glare
(Any Distribution)

High Output: B0 - U5 - G0
Medium Output: B0 - U5 - G0

The ACCENTRA WET LOCATION SERIES offers a stylish and versatile outdoor fixture that seamlessly extends the design of the popular indoor Accentra series. Built to withstand the challenges of outdoor environments, the Accentra WL66 is resistant to moisture, dust, insects, and impact, making it an architectural-grade solution for demanding applications. This compact fixture features a rotatable housing for precise light direction and can be used as individual units or in continuous modular rows.

Qty:

Type:

Project Name:

Catalog Number:

SPECIFICATIONS



Housing

One-piece, .100" thick extruded aluminum with locking provisions on both ends. Die-cast aluminum support modules, end plates and cover plates are fully gasketed. Standard lengths are nominal 2', 3', 4', 5', 6', 7' and 8'. Provisions may be made for continuous rows of virtually any length.

Optical Control

.125" thick, high transmittance extruded polycarbonate lens combined with a precisely designed extruded acrylic optic for maximum performance and durability.

Reflector

.070" thick extruded aluminum finished with a high reflectance baked white powder coat.

Driver (Standard)

Power supply is UL/CUL recognized, 120-277 universal voltage. 347V also available.

Certifications

All fixtures are UL/CUL listed for use in 'Wet Locations.' Ambient operating temperature rated from -30° C up to 50° C, and 0° C up to 50° C with battery back-up. *IP66 Rated. **IK10 Rated.

Circuitry

All fixtures are factory pre-wired for a single circuit. Provision for multiple switching/circuiting is optional.

Light Engines/Color Temps./CRI

LED light sources are available for the following Co-ordinated Color Temperatures (CCT):
Standard: 3000K, 3500K, & 4000K

Color Rendering Index (CRI): Standard: 80

Finish

Standard and premium finishes are baked powder coat electro statically applied (2.0 mil minimum thickness) to assure aesthetics and durability.

Mounting

All mounting components are aluminum or stainless steel. Stem /Canopy assemblies are painted to match fixture housing.

Internal Construction

All internal mechanical components, including fasteners, are aluminum or stainless steel.

Warranty

10 year limited warranty. No other warranty is expressed or implied. Complete warranty terms can be assessed by visiting: <https://pal-lighting.com/company/warranty>

ACCENTRA Series Wet Location - Performance Data

Standard Lumen Outputs Available	Standard High Output - (HO) Medium Distribution	Standard Medium Output - (MO) Medium Distribution	Standard High Output - (HO) Narrow Distribution	Standard Medium Output - (MO) Narrow Distribution	Standard High Output - (HO) Wide Distribution	Standard Medium Output - (MO) Wide Distribution
Delivered Lumens/Foot - Standard	809	531	921	603	719	470
Input Watts/Foot - Standard	8	5	8	5	8	5
Lumens/Watt (Efficacy) - Standard	98	104	111	118	87	92
Custom Lumen Outputs Available						
Custom Lumens/Ft	Contact Factory for Available Output Ranges					

Notes:

- Data listed above is based on using 3500K CCT and 80 CRI LED mod
- *PAL uses fully programmable drivers. Custom outputs (CO) are available. Contact specs@pallighting.com for more information.
- All values are based on calculated LM-79 photometric reports.



ACCENTRA WET LOCATION SERIES STEM, CEILING or WALL MOUNT

ORDERING GUIDE

—————

Series	Distributions	Outputs	Color Temperature (CCT)	Color Rendering
ACC-WL66 Accentra Series (Wet Location)	MB Medium Beam	HO High Output	K30 3000 Kelvin	80 80 CRI (Standard)
	NB Narrow Beam	MO Medium Output	K35 3500 Kelvin	
	WB High Beam	CO Custom Outputs (Contact factory for available output range)	K40 4000 Kelvin	

————

Fixture Lengths	Mounting	Finishes	Voltage	Drivers - Dimming ^{2,4}
2' 2 Ft For continuous rows of 8' or longer, specify row length in 1' increments. Example: 13'	SCM Surface/Ceiling Mount	F01M Matte White (Standard)	120 120V	DIMX Standard No Dimming
3' 3 Ft	SWM Surface/Wall Mount	F10 Bronzed	277 277V	DIM1 Dimming 100% to 1%
4' 4 Ft	EWMXX Extended Wall Mount (Wall Bracket Arms: Specify 6", 12", 18" or 24")	F11T Textured Black	UNV Universal Voltage (120V thru 277V)	DIM5 Dimming 100% to 5
5' 5 Ft		F12 Ultrasonic Clear	347 347V	DIM10 Dimming 100% to 10
6' 6 Ft	PXX Rigid Stem Mount (Stems: Specify Standard 6", 12", 18", or 24". Contact factory for custom lengths)	FXXX PAL Premium Colors: (F01G thru F22)		DIM0 Dimming 100% to 0
7' 7 Ft		FCC Custom Color Match Provide RAL Color# ____		CWD Cold Weather Driver
8' 8 Ft				

Emergency Options

- EBPHST Emergency Battery Pack - 10 Watt Self-Testing. (Integral Mount)
- FS Fused Driver

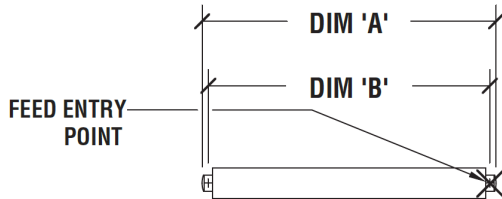
Notes:

- All fixtures are factory pre-wired for a single circuit. Provisions for multiple switching/circuiting is optional.
- Unless otherwise requested, all fixtures contain integral-mount "power-on-board" drivers.
- All fixtures intended for continuous rows are provided with factory installed quick-connect wiring.
- Standard power supply (driver) is UL/CUL recognized, & is available w/0-10V dimming capability & 120 - 277 universal voltage.
- Standard emergency battery pack is a 10 Watt constant power, self-testing, UL 924 listed pack from Iota Engineering - providing 1000 lumens of light for approximately 90 minutes. Battery packs are integral mounted unless otherwise notified. *Note: Remote mounted battery packs are not wet location listed.
- Custom length fixtures and fixtures rows may require a longer lead time. Contact specs@pallighting.com for more information.
- RGBW power supply by EldoLED is UL recognized, and is compatible with DALI and DMX protocols.
- IP rated sensors and control systems are available. Contact specs@pallighting.com for more information.

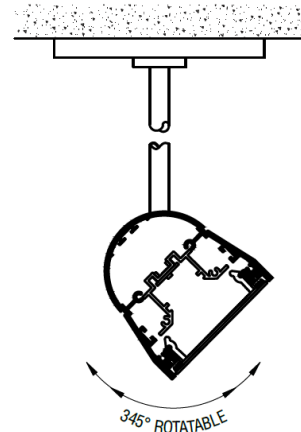


STANDARD FIXTURE LENGTHS & MOUNTING CENTERS

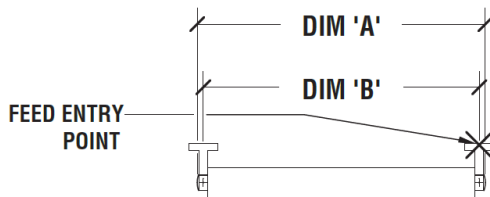
STEM MOUNTING - 345° ROTATABLE:



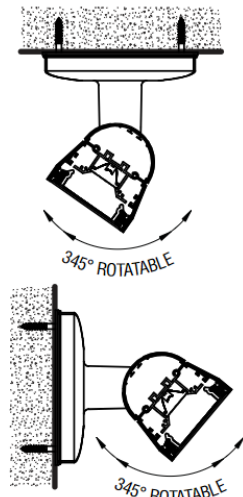
O.A. FIXTURE LENGTH	MOUNTING CENTERS
DIM 'A'	DIM 'B'
(Nom. 2' Lit) - 34"	32"
(Nom. 3' Lit) - 46"	44"
(Nom. 4' Lit) - 58"	56"
(Nom. 6' Lit) - 82"	80"
(Nom. 8' Lit) - 106"	104"



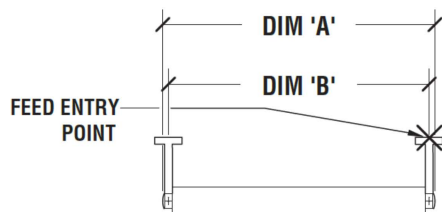
SURFACE/CEILING AND SURFACE/WALL MOUNTING - BOTH 345° ROTATABLE:



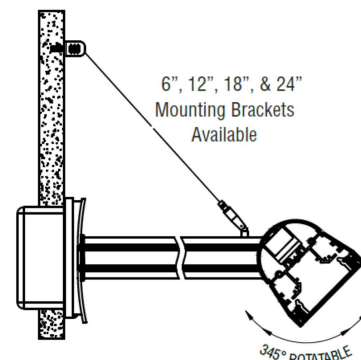
O.A. FIXTURE LENGTH	MOUNTING CENTERS
DIM 'A'	DIM 'B'
(Nom. 2' Lit) - 34"	32"
(Nom. 3' Lit) - 46"	44"
(Nom. 4' Lit) - 58"	56"
(Nom. 6' Lit) - 82"	80"
(Nom. 8' Lit) - 106"	104"



EXTENDED WALL MOUNTING - BOTH 345° ROTATABLE:



O.A. FIXTURE LENGTH	MOUNTING CENTERS
DIM 'A'	DIM 'B'
(Nom. 2' Lit) - 34"	32"
(Nom. 3' Lit) - 46"	44"
(Nom. 4' Lit) - 58"	56"
(Nom. 6' Lit) - 82"	80"
(Nom. 8' Lit) - 106"	104"



*Shown with Supplemental Cable Assembly -
Required for 12", 18", & 24" Bracket Assy's

PHOTOMETRY / LIGHT DISTRIBUTIONS

ACC-WL66-NB-HO

High Output - Rotatable

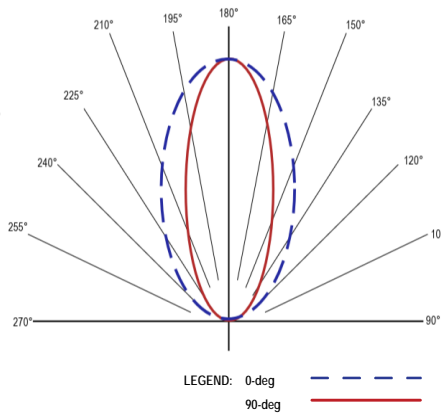


Catalog Number:
ACC-WL66-NB-HO-K40-80-4'-X-FXXX-120

Report Number:
#LLIA001618-005.ies

Total Efficacy: **111.4** Lms/W
Input Power per 4': **33.06** Watts

0% Up 100% Down
Color Rendering Index (CRI) = **82**



ACC-WL66-NB-MO

Medium Output - Rotatable

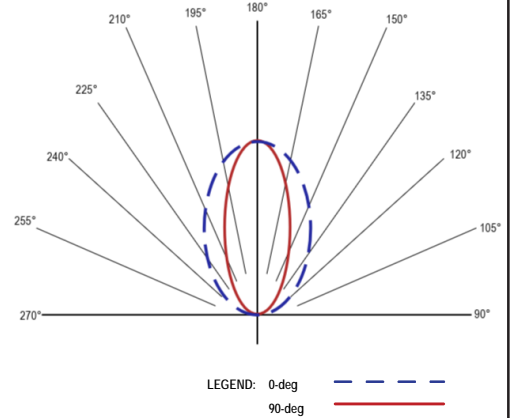


Catalog Number:
ACC-WL66-NB-MO-K40-80-4'-X-FX

Report Number:
#LLIA001618-006.ies

Total Efficacy: **118.2** Lms/W
Input Power per 4': **22.39** Watts

0% Up 100% Down
Color Rendering Index (CRI) = **83**



ACC-WL66-WB-HO

High Output - Rotatable

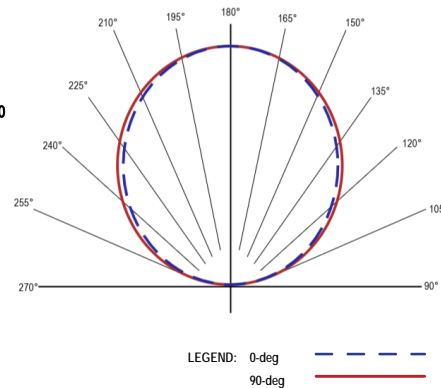


Catalog Number:
ACC-WL66-WB-O-K40-80-4'-X-FXXX-120

Report Number:
#LLIA001618-001.ies

Total Efficacy: **87.1** Lms/W
Input Power per 4': **33.02** Watts

0% Up 100% Down
Color Rendering Index (CRI) = **82**



ACC-WL66-WB-MO

Medium Output - Rotatable

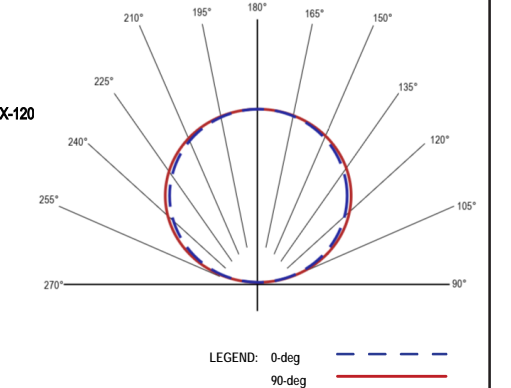


Catalog Number:
ACC-WL66-WB-MO-K40-80-4'-X-FXXX-120

Report Number:
#LLIA001618-002.ies

Total Efficacy: **91.9** Lms/W
Input Power per 4': **20.40** Watts

0% Up 100% Down
Color Rendering Index (CRI) = **83**



ACC-WL66-MB-HO

High Output - Rotatable



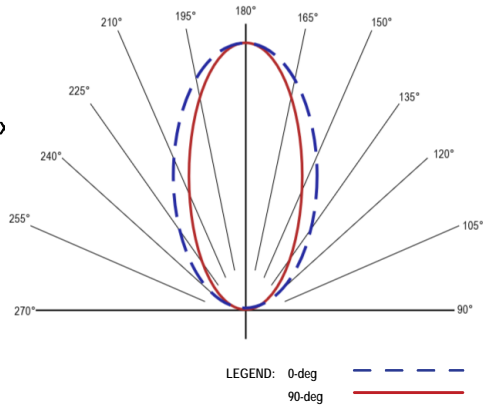
Catalog Number:
ACC-WL66-MB-HO-K40-80-4'-X-FX00

Report Number:
#LLIA001719-002.ies

Total Efficacy: **97.9** Lms/W
Input Power per 4': **33.08** Watts

0% Up 100% Down

Color Rendering Index (CRI) = **83**



ACC-WL66-MB-MO

Medium Output - Rotatable



Catalog Number:
ACC-WL66-MB-MO-K40-80-4'-X-FXXX-120

Report Number:
#LLIA001719-003.ies

Total Efficacy: **103.6** Lms/W
Input Power per 4': **20.50** Watts

0% Up 100% Down

Color Rendering Index (CRI) = **83**

