

ACCENTRA-WL66 SURFACE CEILING MOUNT SAFETY AND INSTALLATION INSTRUCTIONS

CAUTION:

- * BE CERTAIN THAT POWER TO FIELD WIRING HAS BEEN TURNED OFF PRIOR TO INSTALLATION.
- * THIS PRODUCT MUST BE INSTALLED IN ACCORDANCE WITH THE APPLICABLE INSTALLATION CODE BY A PERSON FAMILIAR WITH THE CONSTRUCTION AND OPERATION OF THE PRODUCT AND THE HAZARDS INVOLVED.
- * IT IS INSTALLER'S RESPONSIBILITY TO ENSURE THAT MOUNTING SURFACE IS STRUCTURALLY CAPABLE OF SUPPORTING WEIGHT OF FIXTURE.
- * BE CERTAIN THAT SUPPLY VOLTAGE IS THE SAME AS THAT MARKED ON FIXTURE.

CE PRODUIT DOIT ÊTRE INSTALLÉ SELON LE CODE D'INSTALLATION PERTINENT, PAR UNE PERSONNE QUI CONNAÎT BIEN LE PRODUIT ET SON FONCTIONNEMENT AINSI QUE LES RISQUES INHÉRENTS.

SINGLE FIXTURE INSTALLATION - SURFACE CEILING MOUNT

STEP 1:

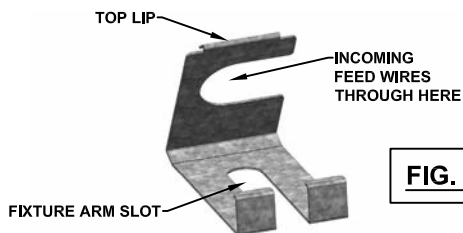
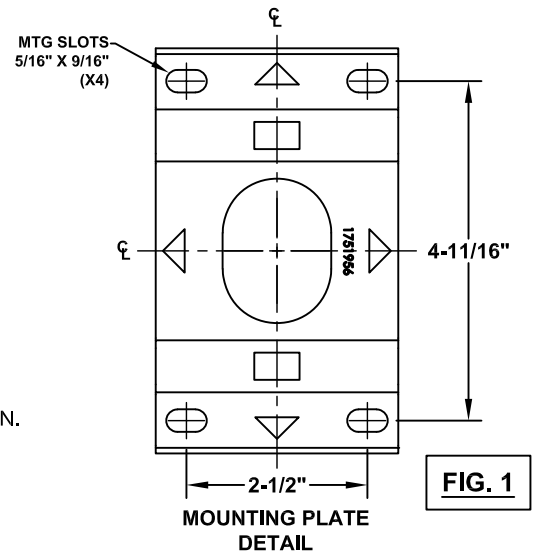
USING MOUNTING PLATE AS A TEMPLATE, (FIG. 1) CENTER OVER RECESSED SWITCH BOX AND MARK (4) MOUNTING HOLES. (FIG. 2) DRILL HOLES APPROPRIATE FOR MOUNTING SURFACE AND FASTENERS (BY OTHERS) TO BE USED. SECURELY ATTACH MOUNTING PLATE AND GASKET TO CEILING AS ILLUSTRATED.

STEP 2:

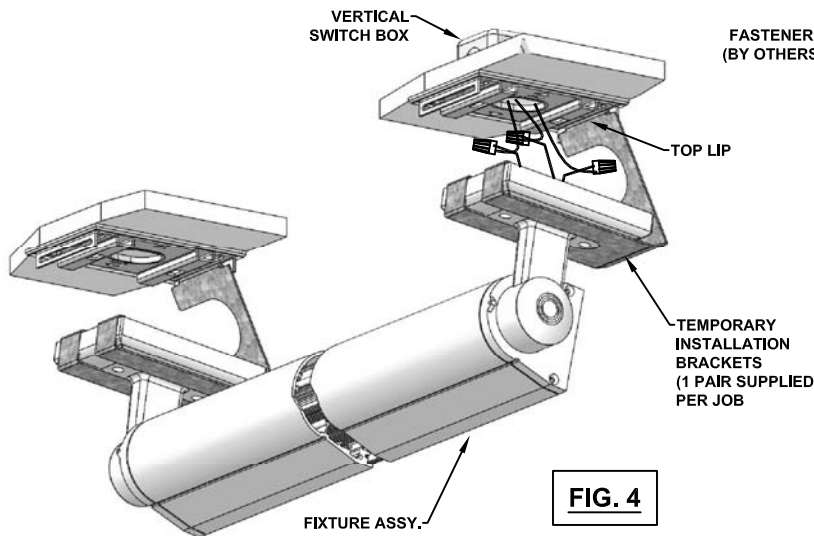
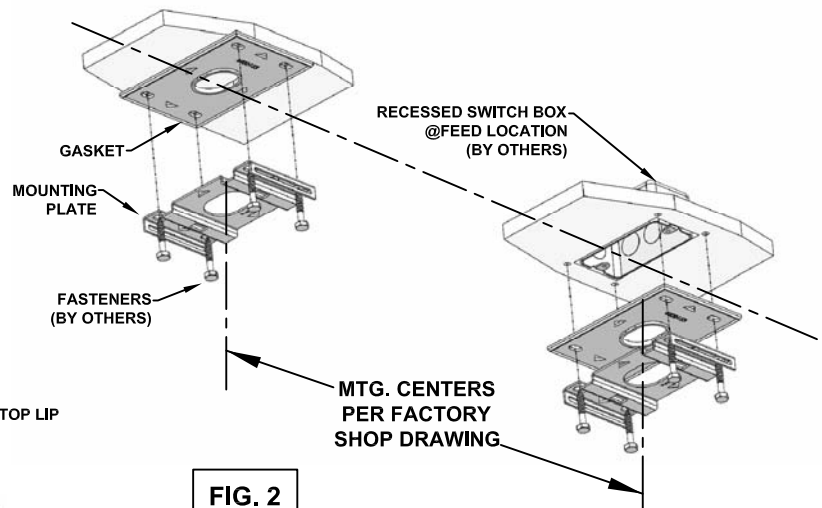
ATTACH SECOND MOUNTING PLATE AND GASKET TO MOUNTING SURFACE AT LOCATION AS SPECIFIED ON FACTORY SHOP DRAWING. TAKE CARE THAT MOUNTING PLATES ARE ALIGNED AND PERPENDICULAR TO MOUNTED FIXTURE POSITION.(FIG. 2)

STEP 3:

USE TEMPORARY INSTALLATION BRACKETS (FIG. 3) TO SUPPORT FIXTURE DURING WIRING OPERATION. TOP LIP OF BRACKET SHOULD ENGAGE IN SLOT OF MOUNTING PLATE. AS SHOWN. RAISE FIXTURE ADJACENT TO INSTALLED POSITION AND HANG FIXTURE ON TEMPORARY INSTALLATION BRACKETS. CONNECT FIXTURE LEADS TO INCOMING POWER LEADS. PUSH EXCESS WIRES AND CONNECTORS INTO J-BOX. (FIG. 4)



TEMPORARY INSTALLATION
BRACKETS
(SURFACE CEILING MOUNT)

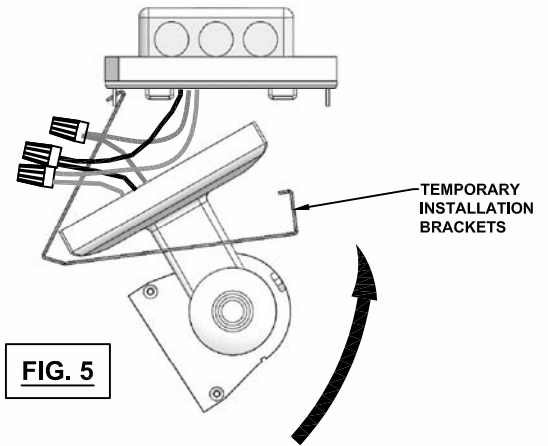


CONTINUED ON NEXT PAGE

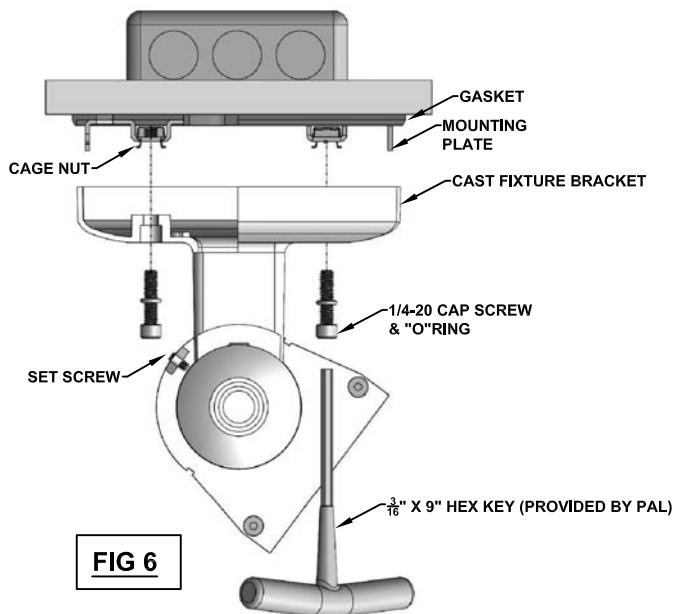


ACCENTRA-WL66 SURFACE CEILING MOUNT SAFETY AND INSTALLATION INSTRUCTIONS

STEP 4:
CAREFULLY ROTATE THE FIXTURE ASSEMBLY CLEAR OF THE
TEMPORARY INSTALLATION BRACKETS AND REMOVE BRACKETS.
(FIG.5)



**TEMPORARY INSTALLATION BRACKETS
(REMOVE PRIOR TO FINAL INSTALLATION)**



STEP 5:
POSITION FIXTURE OVER MOUNTING PLATES. USING
AN AWL OR SMALL PHILIPS SCREW DRIVER, ADJUST
CAGE NUTS SO THEY ARE ALIGNED WITH THE
MOUNTING HOLES IN THE CAST FIXTURE BRACKET.
SECURE FIXTURE TO MOUNTING PLATE WITH 1/4-20
CAP SCREWS & "O"RINGS USING HEX KEY PROVIDED
BY **PAL**. MAKE CERTAIN PERIMETER OF CAST
MOUNTING BRACKET IS FULLY SEATED WITHIN THE
CONFINES OF THE WALL GASKET/ (FIG 6)

NOTE:

IF MOUNTING SURFACE IS IRREGULAR, IT WILL BE
NECESSARY TO RUN A BEAD OF RTV SILICONE
AROUND PERIMETER OF CAST FIXTURE BRACKET AT
FEED LOCATION.

STEP 6:
ENERGIZE FIXTURE AND CHECK FOR PROPER
OPERATION.

STEP 7:
AIM FIXTURE AND CAREFULLY TIGHTEN SET
SCREWS ONLY ENOUGH TO MAINTAIN
FIXTURE POSITION. (FIG. 6)

CONTINUOUS ROW - NEXT PAGE



Precision Architectural Lighting 4830 Timber Creek Drive Houston, Texas 77017
Tel (713) 946-4343 Fax (713) 946-4441 www.pal-lighting.com

PAL RESERVES THE RIGHT TO CHANGE PRODUCT
DESIGN AND SPECIFICATIONS. CONTACT FACTORY
FOR MOST RECENT PRODUCT INFORMATION.

3750234-2 11/21

ACCENTRA-WL66 SURFACE CEILING MOUNT SAFETY AND INSTALLATION INSTRUCTIONS

CONTINUOUS ROW INSTALLATION

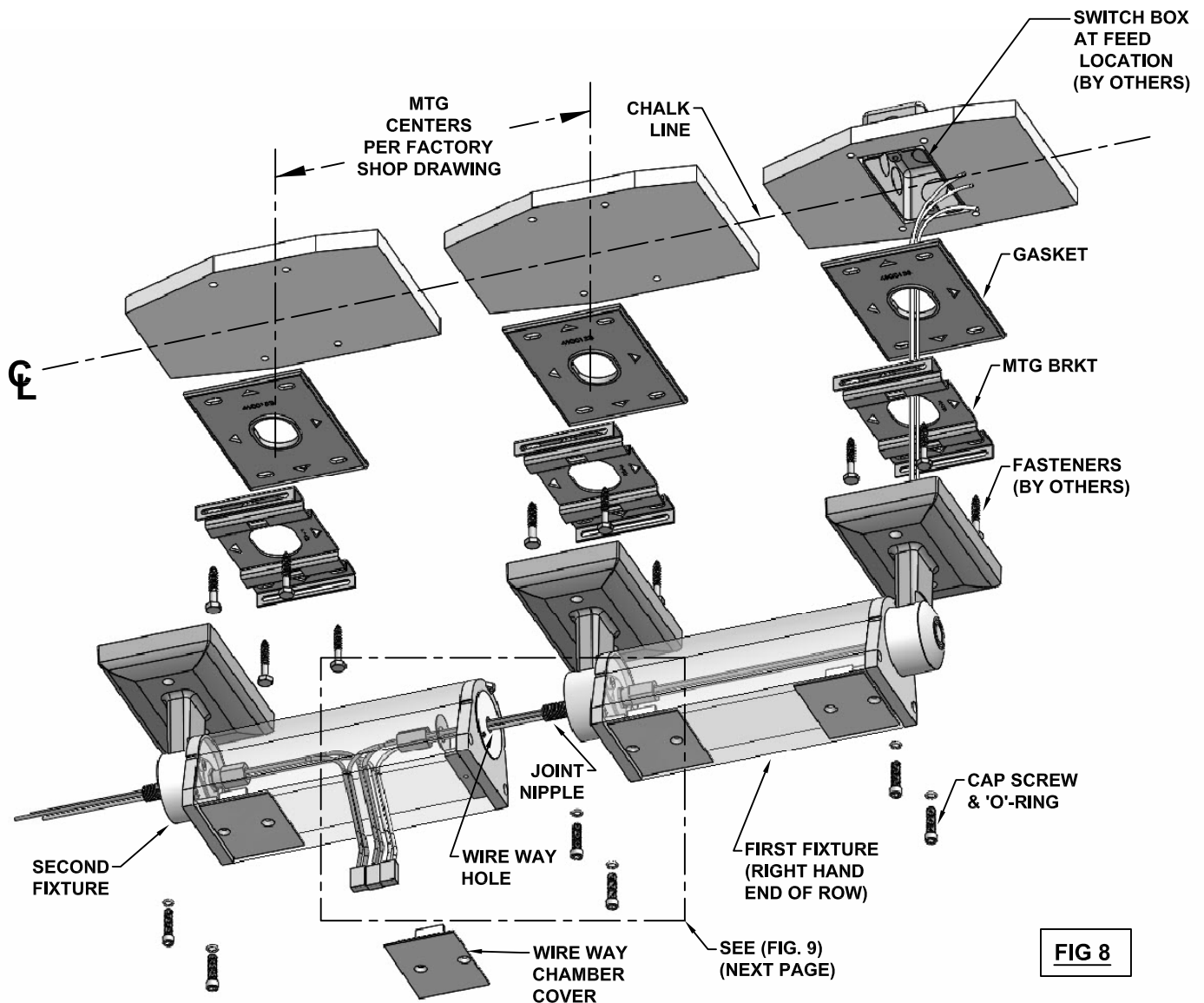
CAUTION

DO NOT ATTEMPT TO ASSEMBLE FIXTURE ROWS ON GROUND AND LIFT INTO POSITION. ATTEMPTING TO ASSEMBLE & INSTALL FIXTURES IN THIS MANNER MAY CREATE STRESS AT CONNECTIONS RESULTING IN DAMAGE AND/OR MECHANICAL FAILURE.

STEP 1:
SECURE MOUNTING PLATES ON CENTERS INDICATED ON FACTORY SHOP DRAWING. NOTE THAT FEED LOCATION SHOULD BE AT THE RIGHT HAND END OF ROW. (FIG. 8)

STEP 2:
INSTALL FIRST (RIGHT HAND END OF ROW) FIXTURE AS DETAILED ON "INDIVIDUAL FIXTURE INSTALLATION". INCOMING FEED SHOULD BE AT RIGHT HAND END AND JOINT NIPPLE PROTRUDING FROM LEFT HAND OF FIXTURE. (FIG. 08)

STEP 3:
REMOVE WIRE WAY CHAMBER COVER FROM JOINT END OF NEXT FIXTURE. RAISE FIXTURE AND TEMPORARILY SUPPORT SO IT IS ALIGNED WITH FIRST FIXTURE. ROUTE FEED WIRES FROM FIRST FIXTURE THROUGH WIRE WAY HOLE AND OUT OF WIRE WAY CHAMBER IN SECOND FIXTURE. (FIG. 8)



CONTINUOUS ROW INSTALLATION



ACCENTRA-WL66 SURFACE CEILING MOUNT SAFETY AND INSTALLATION INSTRUCTIONS

CONTINUOUS ROW INSTALLATION - CONTINUED

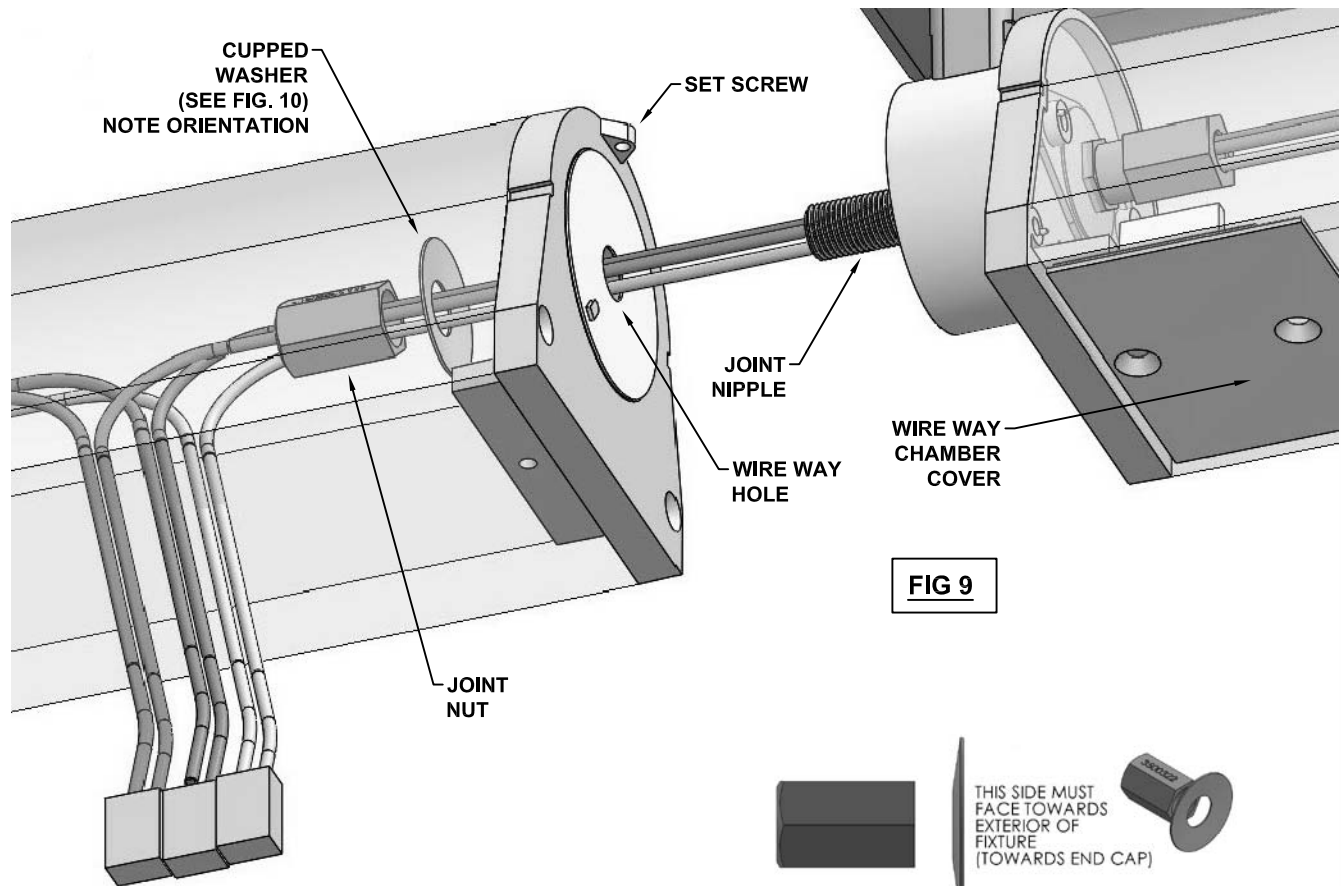
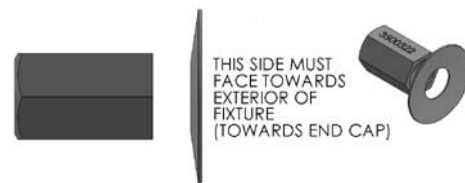


FIG 9



CUPPED WASHER ORIENTATION DETAIL

FIG 10

STEP 4:
ADJUST SECOND FIXTURE SO THAT WIRE WAY NIPPLE FROM FIRST FIXTURE PASSES THROUGH THE WIRE WAY HOLE ON THE SECOND FIXTURE. SECURE FIXTURE IN PLACE BY FASTENING IT TO THE MOUNTING BRACKET ON OPPOSITE END. (FIG. 9)

STEP 5:
PASS FEED WIRES FROM FIRST FIXTURE THROUGH CUPPED WASHER AND JOINT NUT (**NOTE ORIENTATION OF CUPPED WASHER - SEE (FIG 10))** AND FINGER TIGHTEN JOINT NUT ON TO WIRE WAY NIPPLE. TIGHTEN JOINT NUT SECURELY WITH A 5/8" COMBINATION WRENCH.

NOTE: A 5/8" RATCHETING BOX WRENCH FACILITATES TIGHTENING OF THE JOINT NUT.

STEP 6:
CONNECT FIRST FIXTURE LEADS TO SECOND FIXTURE LEADS OBSERVING COLOR CODING. (FIG. 8 & 9) INSTALL WIRE WAY CHAMBER COVER ON SECOND FIXTURE.

STEP 7:
REPEAT STEPS 3 THROUGH 6 FOR REMAINING FIXTURES IN THE ROW. UPON COMPLETION , ENERGIZE FIXTURE ROW AND CHECK FOR PROPER OPERATION.

STEP 8:
AIM FIXTURES AND CAREFULLY TIGHTEN SET SCREWS ONLY ENOUGH TO MAINTAIN FIXTURE POSITION.

