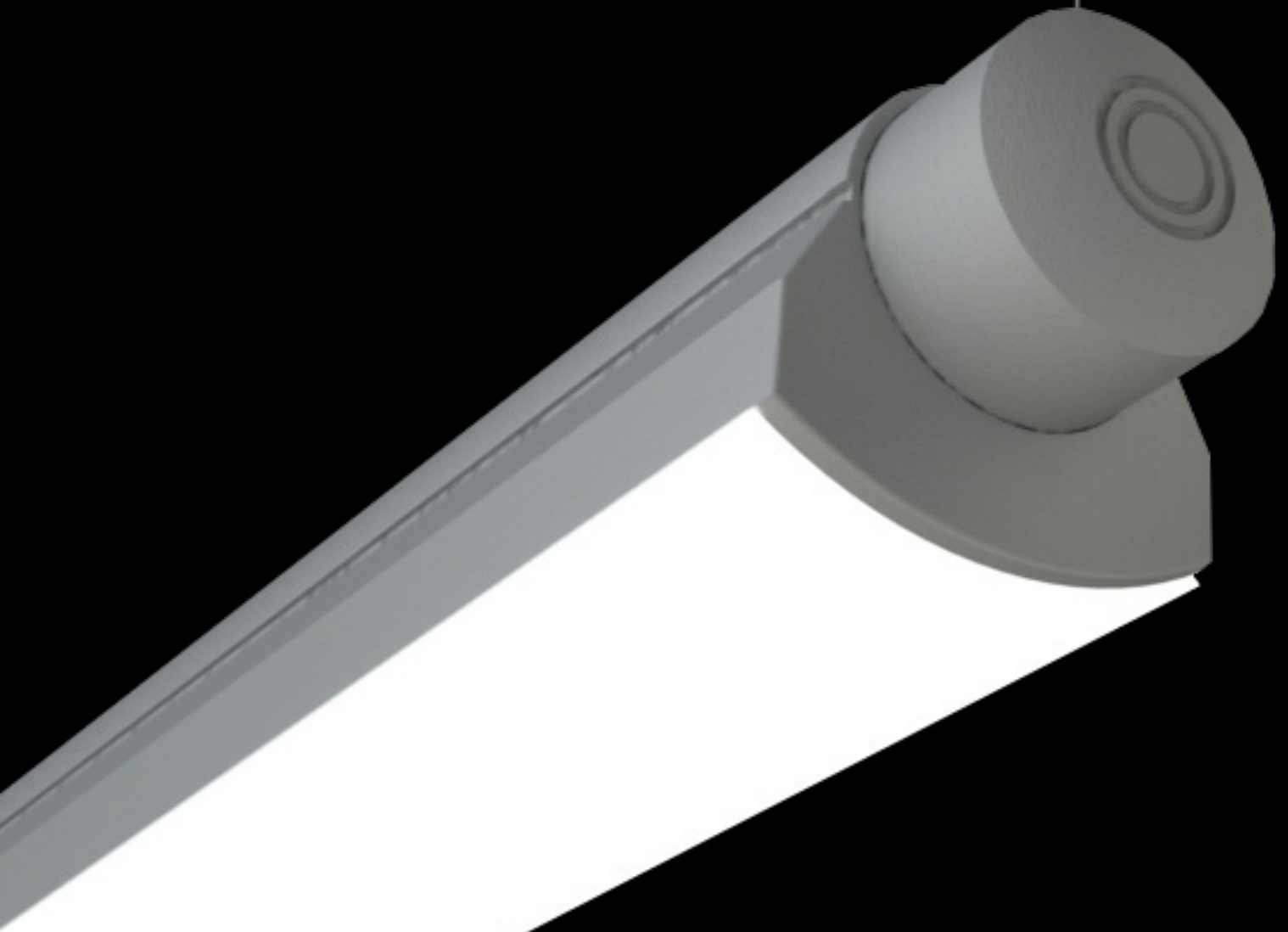


ACCENTRA
INTERIOR
SERIES



PAL
ARCHITECTURAL

ACCENTRA INTERIOR

INTRODUCING THE NEW ACCENTRA LED SYSTEM, A HIGHLY FLEXIBLE, FULLY ROTATABLE LIGHTING SOLUTION DRIVEN BY AN EFFICIENT LED SOURCE

- Efficacies as high as 88 lumens/watt
- Standard delivered lumens of 526 lumens/foot at medium output and 831 lumens/foot at high output. Factory programmable drivers also allow for customized lumen outputs.
- Power consumption of approx 6 watts/foot at medium output, approx 10 watts/foot at high output.
- Average Color Rendering Index (CRI) of 83 (80 and 90 CRI LED modules available)

FEATURES

The Accentra LED System Solution provides wide-ranging design flexibility to meet a variety of applications.

Accentra can be rotated through 359 degrees, then locked into place, making it an 'aim-able' fixture.

- Compact, slim profile for enhanced aesthetic appeal
- LED source reduces lifetime cost, extends lifespan and increases ROI
- Choose from three standard color temperatures: 3000K, 3500K & 4000K - as well as an adjustable tunable white option: 2700K through 6500K
- Optional 90° die-cast connectors provide virtually unlimited pattern options
- High-quality extruded aluminum construction and precision die castings ensure the high level of quality you and your customers expect



ACCENTRA INTERIOR

PAL
ARCHITECTURAL

SERIES/
ORIENTATION/
MOUNTING

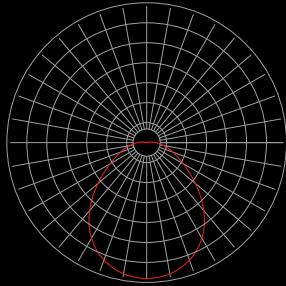
DISTRIBUTIONS

STANDARD
OUTPUTS

DELIVERED

EFFICACIES

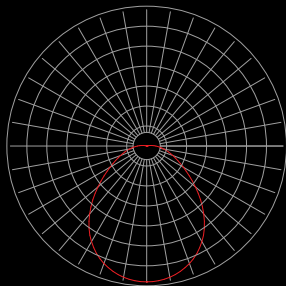
ACC-DIRECT-
STEM, CABLE,
CEILING, WALL &
EXTENDED WALL
MOUNT



HO = High output

831 Lms/Ft

80 Lms/W



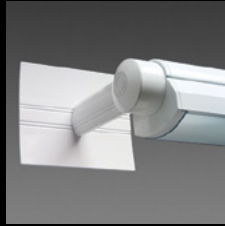
MO = Medium
Output

526 Lms/Ft

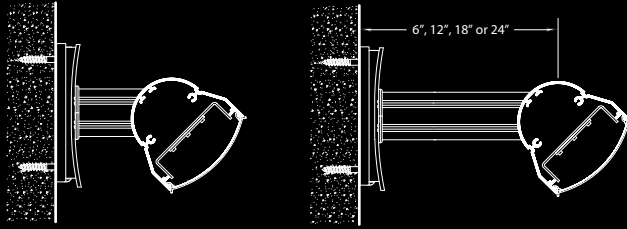
88 Lms/W



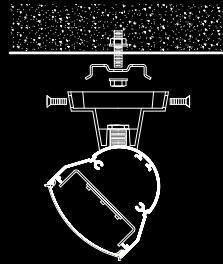
ACCENTRA INTERIOR



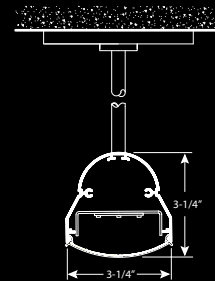
W = WALL



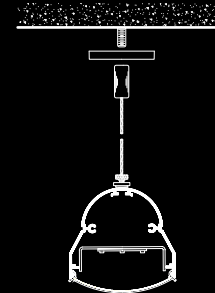
J = CEILING



P = STEM



C = CABLE



L90 = 90° CONNECTOR



4830 Timber Creek Drive,
Houston, TX 77017
P: 713.946.4343
F: 713.946.4441
www.pal-lighting.com

PAL
ARCHITECTURAL