

SYSTEM
SOLUTIONS



ACCENTRA™ LED




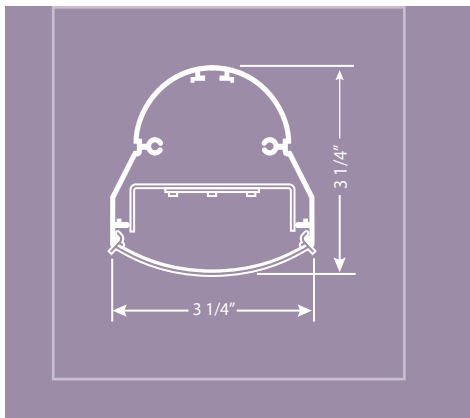
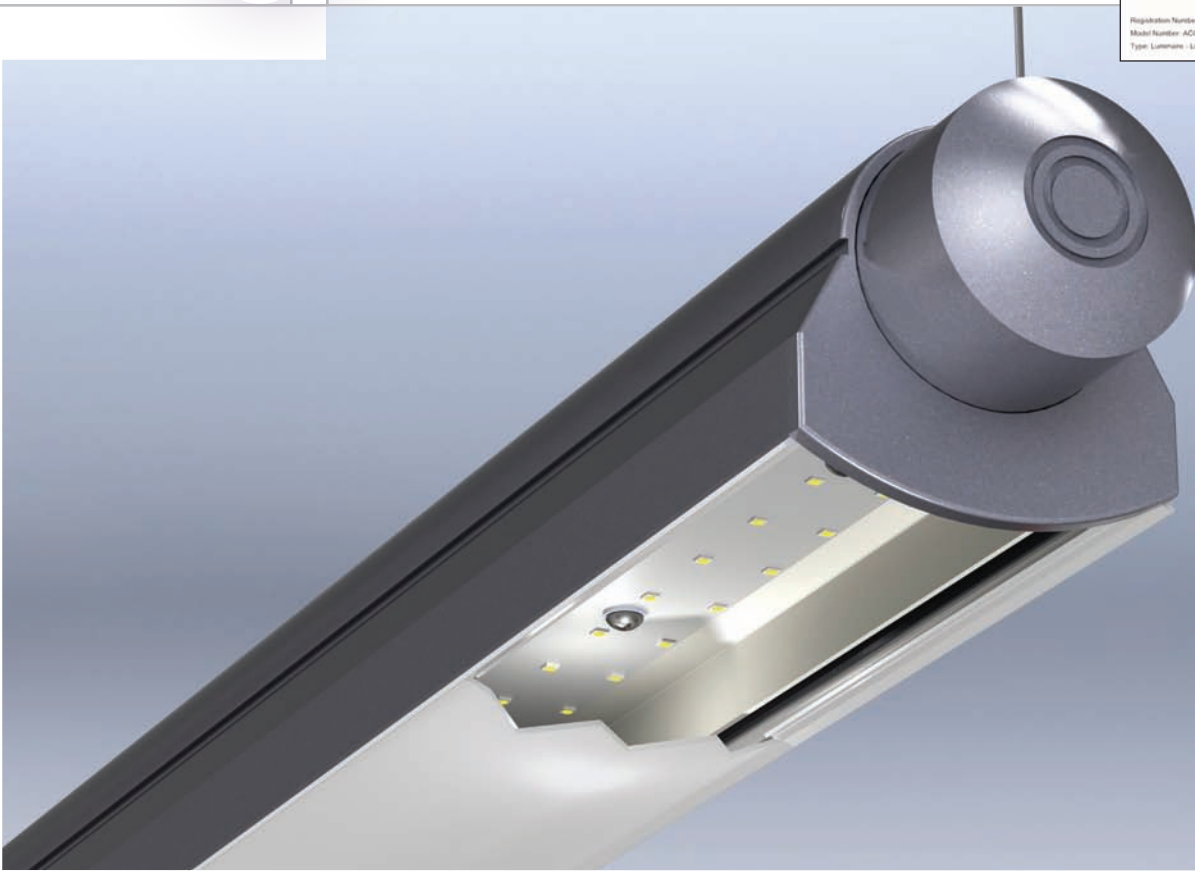
Precision
Architectural
Lighting

INTRODUCING

THE NEW ACCENTRA LED SYSTEM,
A HIGHLY FLEXIBLE, FULLY ROTATABLE LIGHTING
SOLUTION DRIVEN BY AN EFFICIENT LED SOURCE.

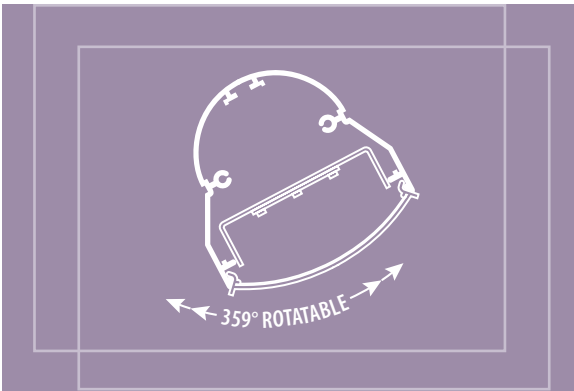
PERFORMANCE • QUALITY

LED lighting facts®	
A Program of the U.S. DOE	
Light Output (Lumens)	2106
Watts	23.9
Lumens per Watt (Efficacy)	88
Color Accuracy Color Rendering Index (CRI)	83
Light Color Correlated Color Temperature (CCT)	3455 (Bright White)
	
Warranty**	Yes
<small>All results, except LED Lumen Maintenance, are according to IESNA LM-79-2008. Approved Method for the Electrical and Photometric Testing of Solid State Lighting. The U.S. Department of Energy (DOE) verifies product test data and results.</small>	
<small>** See www.lightingfacts.com/products for details.</small>	
<small>Registration Number: 188P-M001050V (4/21/2014) Model Number: ACC-M0-106-4-L-DH-120 Type: Luminaire - Linear</small>	



- Efficacies as high as 88 lumens/watt
- Our proprietary extruded acrylic lens with holographic insert delivers optimized output
- Delivered lumens of 526/foot at medium output, 831/foot at high output
- Power consumption of approx. 6 watts/foot at medium output, approx. 10 watts/foot at high output
- Available with standard medium- or high output settings. Factory-programmable drivers allow for customized output to perfectly suit your application
- Average Color Rendering Index (CRI) of 83

FLEXIBLE SYSTEM SOLUTIONS



THE ACCENTRA LED SYSTEM SOLUTION

PROVIDES WIDE-RANGING DESIGN FLEXIBILITY TO
MEET A VARIETY OF APPLICATIONS.



- *Define your space utilizing Accentra LED's rotatable capability*
- *Targeted light output is delivered via programmable drivers*
- *Slim profile for enhanced aesthetic appeal*
- *LED source reduces lifetime cost, extends lifespan and increases ROI*
- *Choose from five color temperatures: 2700K, 3000K, 3500K, 4000K or 5000K*
- *Optional 90° die-cast connectors provide virtually unlimited pattern options*
- *High-quality extruded aluminum construction and precision die castings ensure the high level of quality you and your customers expect*
- *PAL's high level of personal service delivers a superior working experience for you and greater value for your customer*



**Precision
Architectural
Lighting**

4830 Timber Creek Drive,

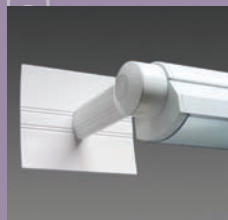
Houston, TX 77017

P: 713.946.4343

F: 713.946.4441

www.pal-lighting.com

*A premier manufacturer
of architectural grade
lighting systems,
Precision Architectural
Lighting combines
quality craftsmanship,
outstanding product
performance and
personalized customer
support, partnering
with you to ensure your
complete satisfaction.*



W=WALL



J=CEILING



P=STEM



C=CABLE



L90=90° CONNECTOR

ACCENTRA™ LED

SPECIFICATIONS

SERIES	ACC	ACC
ACCENTRA SERIES	ACC	
LUMEN OUTPUT		
<i>Lumen ratings per 4' section (3500 K)</i>		
HIGH OUTPUT	HO	
3326 Total Lumens-80 Lm/W		
MEDIUM OUTPUT	MO	
2106 Total Lumens-88 Lm/W		
CCT		
3000 KELVIN	K30	
3500 KELVIN	K35	
4000 KELVIN	K40	
STANDARD LENGTHS		
2', 3', 4', 6' AND 8'	2, 3, 4, 6, or 8	
MOUNTING		
CABLE (15/16" TBAR)	CT (length)	
Fully Adjustable (36" Standard)		
CABLE (NON-TBAR)	CN (length)	
Fully Adjustable (36" Standard)		
RIGID STEM (Up to 48" Standard)	P (length)	
SWIVEL STEM (Up to 48" Standard)	K (length)	
TBAR CEILING MOUNTING	JT	
NON-TBAR CEILING MOUNTING	JN	
WALL (6", 12", 18", 24")	W (length)	
OPTICAL CONTROL		LOH
LED OPTIMIZED HIGH TRANSMITTANCE LENS	LOH	
FINISHES		
<i>Standard Finish</i>		
MATTE WHITE	F01M	
<i>Premium Finishes</i>		
GLOSS WHITE	F01G	
IVORY	F02	
STONEWASH	F03	
CAMEL	F04	
GRAY DAY	F05	
PEBBLE BEACH	F06	
STEEL	F07	
GRAY SEAL	F08	
MOCHA	F09	
BRONZED	F10	
GLOSS BLACK	F11	
MATTE BLACK	F11M	
ULTRASONIC CLEAR	F12	
MERLOT	F13	
RED SKIES	F14	
LEMON	F15	
FOREST HUNTER	F16	
BLUE PRINT	F20	
REFLEX BLUE	F21	
NAVY	F22	
CUSTOM COLOR	FCC	
VOLTAGE		
120, 277	120V or 277V	
OPTIONS		
NIGHT LIGHT CIRCUIT	NLCKT	
(Common Neutral)		
EMERGENCY CIRCUIT	EMCKT	
(Separate Hot and Neutral)		
EMERGENCY BATTERY PACK (7 Watt)	EBPL	
EMERGENCY BATTERY PACK (10 Watt)	EBPH	
DIMMING	DIM	
FUSED DRIVERS	FS	
GENERATOR TRANSFER DEVICE	GTD	
DAMP LOCATION	DL	
90° CONNECTOR	L90	