

10 DAY SHIP



Quick Ship



Precision
Architectural
Lighting

10 DAY SHIP

QuickShip Policy

QuickShip orders will ship within 10 working days. Ship dates do not include nationally recognized holidays. Orders received after 12:00 p.m. CST shall be dated as received on the following calendar business day.

Ship dates are contingent upon receipt of a released, approved purchase order from a distributor with approved credit.

Purchase order revisions may affect QuickShip lead times.

Record drawings only will be provided for QuickShip orders.

QuickShip fixtures to utilize universal voltage (120V thru 277V) drivers only. (No 347 volt.)

QuickShip fixtures are restricted to 4' and 8' individual units, and QuickShip orders are restricted to 500 linear feet maximum/order.

Custom fixture lengths or custom mitered corners are not available and are excluded from the QuickShip program.

Matte White color is standard. PAL premium colors and custom colors are excluded from the QuickShip program.

QuickShip fixtures are programmed for high output only, and are factory-wired for 0 - 10 volt dimming.

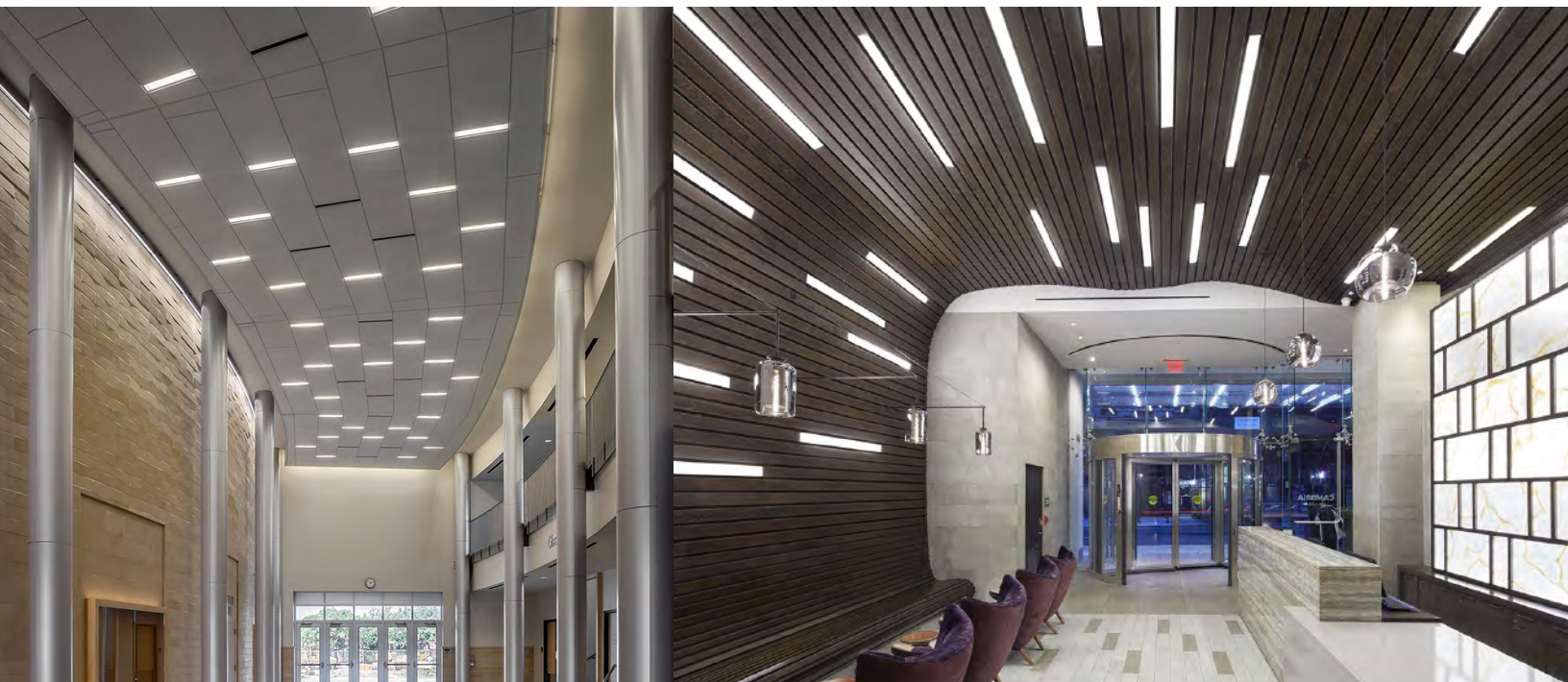
QuickShip fixtures are provided with either 3500K or 4000K CCT LED modules.

QuickShip Suspended fixtures include fully adjustable aircraft cable assemblies with 72" of cable and power cord.

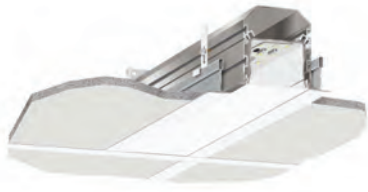
QuickShip Spackle Flange Recessed fixtures are yoke mounted and restricted to 5/8" thick drywall only.

QuickShip orders ship via standard motor freight. Any special or expedited shipping will require an additional surcharge.

Freight is allowed on QuickShip shipments of \$3,000 or more to any one destination within the continental United States. Freight is allowed on QS shipments of \$5,000 or more to any one destination within Canada.



Recessed - Grid Ceilings



Series MLR3	Nominal Lengths: 4' and 8'	Ceiling Type FT = 15/16" or 9/16" Grid with Flush Tile TT = 15/16" or 9/16" Grid with Tegular Tile
MLR3-HO-K40-80-4'-FT-LOH-UNV-DIM		
Lumen Output HO - High Output *2904 Total Lumens - 100 Lm/W *Lumen ratings per 4' section (4000 K)	CCT K35 3500 Kelvin K40 4000 Kelvin	CRI 80
	Optical Control LOH LED Optimized High Transmittance Lens	Voltage UNV Universal Voltage (120 - 277V)
		Dimming* *Purple & Gray Leads To Be Separately Capped Off If Dimming Not Required

Features:

- 3500K or 4000K CCT
- Fits Flush Tile or Tegular Tile Ceilings
- Universal Voltage Drivers with 100% to 1% Dimming Capability

Available Fixtures:

MLR3 - HO - K35 - 80 - 4' - FT - LOH - UNV - DIM (Flush Tile)

MLR3 - HO - K35 - 80 - 8' - FT - LOH - UNV - DIM (Flush Tile)

MLR3 - HO - K40 - 80 - 4' - FT - LOH - UNV - DIM (Flush Tile)

MLR3 - HO - K40 - 80 - 8' - FT - LOH - UNV - DIM (Flush Tile)

MLR3 - HO - K35 - 80 - 4' - TT - LOH - UNV - DIM (Tegular Tile)

MLR3 - HO - K35 - 80 - 8' - TT - LOH - UNV - DIM (Tegular Tile)

MLR3 - HO - K40 - 80 - 4' - TT - LOH - UNV - DIM (Tegular Tile)

MLR3 - HO - K40 - 80 - 8' - TT - LOH - UNV - DIM (Tegular Tile)

Recessed - Drywall Ceilings



Series MLR3	Nominal Lengths: 4' and 8'	Mounting YK = Snap-in Yoke - (OF) YK = Adjustable Yoke - (SF)
MLR3-HO-K40-80-4'-OF-YK-LOH-UNV-DIM		
Lumen Output HO - High Output *2904 Total Lumens - 100 Lm/W *Lumen ratings per 4' section (4000 K)	CCT K35 3500 Kelvin K40 4000 Kelvin	CRI 80
	Ceiling Type OF Drywall Overlap Flange SF5 Spackle Flange w/5/8" Drywall	Optical Control LOH LED Optimized High Transmittance Lens
		Voltage UNV Universal Voltage (120 - 277V)
		Dimming* *Purple & Gray Leads To Be Separately Capped Off If Dimming Not Required

Features:

- 3500K or 4000K CCT
- Overlap Flange or Spackle Flange Mounting
- Universal Voltage Drivers with 100% to 1% Dimming Capability

Available Fixtures:

MLR3 - HO - K35 - 80 - 4' - OF - YK - LOH - UNV - DIM (Overlap Flange)

MLR3 - HO - K35 - 80 - 8' - OF - YK - LOH - UNV - DIM (Overlap Flange)

MLR3 - HO - K40 - 80 - 4' - OF - YK - LOH - UNV - DIM (Overlap Flange)

MLR3 - HO - K40 - 80 - 8' - OF - YK - LOH - UNV - DIM (Overlap Flange)

MLR3 - HO - K35 - 80 - 4' - SF5 - YK - LOH - UNV - DIM (Spackle Flange)

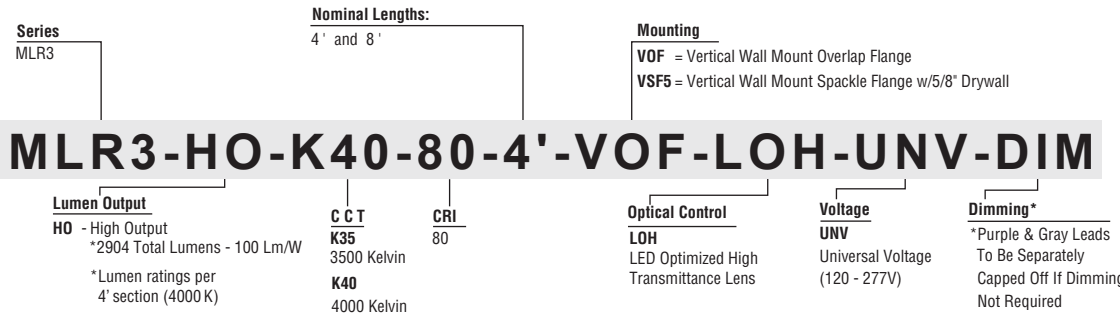
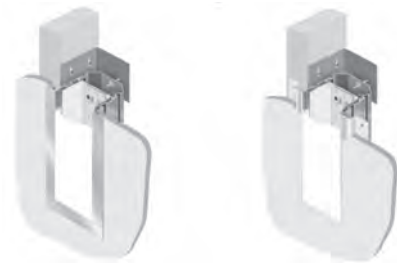
MLR3 - HO - K35 - 80 - 8' - SF5 - YK - LOH - UNV - DIM (Spackle Flange)

MLR3 - HO - K40 - 80 - 4' - SF5 - YK - LOH - UNV - DIM (Spackle Flange)

MLR3 - HO - K40 - 80 - 8' - SF5 - YK - LOH - UNV - DIM (Spackle Flange)



Recessed - Vertical Wall Mount



Features:

- 3500K or 4000K CCT
- Overlap Flange or Spackle Flange Wall Mount
- Universal Voltage Drivers with 100% to 1% Dimming Capability

Available Fixtures:

MLR3 - HO - K35 - 80 - 4' - VOF - LOH - UNV - DIM (Overlap Flange)

MLR3 - HO - K35 - 80 - 8' - VOF - LOH - UNV - DIM (Overlap Flange)

MLR3 - HO - K40 - 80 - 4' - VOF - LOH - UNV - DIM (Overlap Flange)

MLR3 - HO - K40 - 80 - 8' - VOF - LOH - UNV - DIM (Overlap Flange)

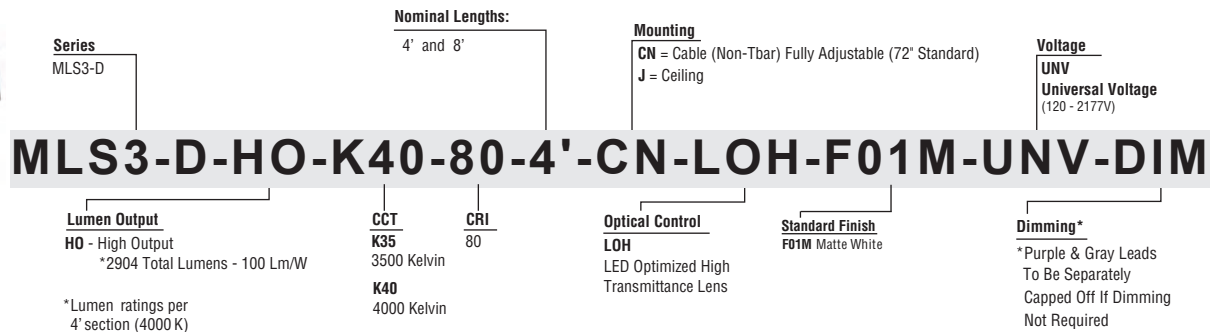
MLR3 - HO - K35 - 80 - 4' - VSF5 - LOH - UNV - DIM (Spackle Flange)

MLR3 - HO - K35 - 80 - 8' - VSF5 - LOH - UNV - DIM (Spackle Flange)

MLR3 - HO - K40 - 80 - 4' - VSF5 - LOH - UNV - DIM (Spackle Flange)

MLR3 - HO - K40 - 80 - 8' - VSF5 - LOH - UNV - DIM (Spackle Flange)

Surface & Suspended Mount - Direct



Features:

- 3500K or 4000K CCT
- Surface Mount or Suspended Mount
- Universal Voltage Drivers with 100% to 1% Dimming Capability

Available Fixtures:

MLS3 - HO - K35 - 80 - 4' - J - LOH - F01M - UNV - DIM (Surface-Direct)

MLS3 - HO - K35 - 80 - 8' - J - LOH - F01M - UNV - DIM (Surface-Direct)

MLS3 - HO - K40 - 80 - 4' - J - LOH - F01M - UNV - DIM (Surface-Direct)

MLS3 - HO - K40 - 80 - 8' - J - LOH - F01M - UNV - DIM (Surface-Direct)

MLS3 - HO - K35 - 80 - 4' - CN72" - LOH - F01M - UNV - DIM (Suspended-Direct)

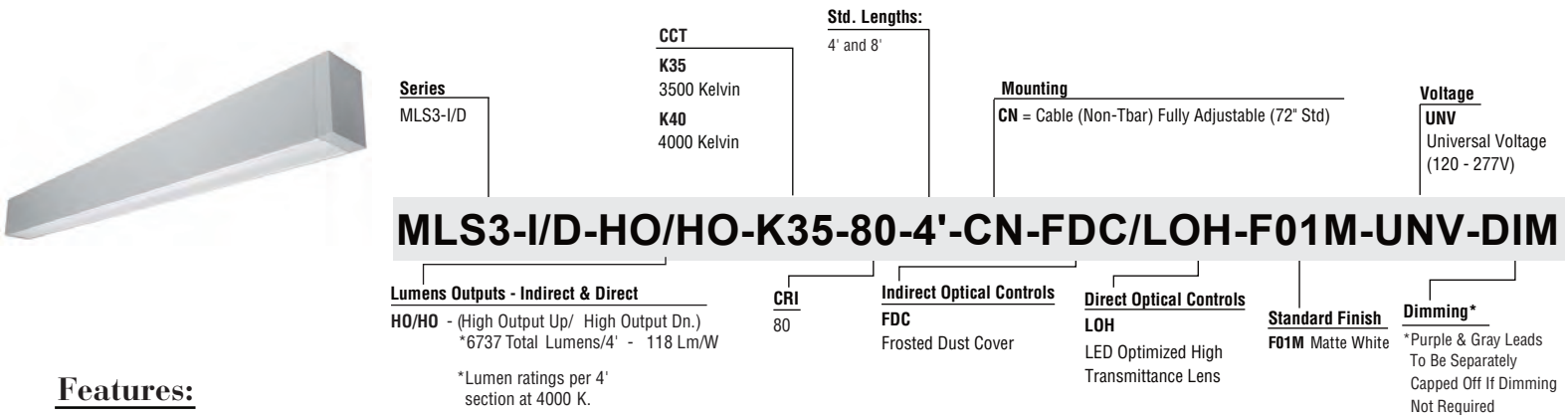
MLS3 - HO - K35 - 80 - 8' - CN72" - LOH - F01M - UNV - DIM (Suspended-Direct)

MLS3 - HO - K40 - 80 - 4' - CN72" - LOH - F01M - UNV - DIM (Suspended-Direct)

MLS3 - HO - K40 - 80 - 8' - CN72" - LOH - F01M - UNV - DIM (Suspended-Direct)



Suspended Mount - Indirect/Direct



Features:

- 3500K or 4000K CCT
- Surface Mount or Suspended Mount
- Universal Voltage Drivers with 100% to 1% Dimming Capability

Available Fixtures:

- MLS3 - HO/HO - K35 - 80 - 4' - CN72" - FDC/LOH - F01M - UNV - DIM (Suspended-Indirect/Direct)
- MLS3 - HO/HO - K35 - 80 - 8' - CN72" - FDC/LOH - F01M - UNV - DIM (Suspended-Indirect/Direct)
- MLS3 - HO/HO - K40 - 80 - 4' - CN72" - FDC/LOH - F01M - UNV - DIM (Suspended-Indirect/Direct)
- MLS3 - HO/HO - K40 - 80 - 8' - CN72" - FDC/LOH - F01M - UNV - DIM (Suspended-Indirect/Direct)



Precision Architectural Lighting

4830 Timber Creek Dr. Houston, Texas 77017

Tel (713) 946-4343 Fax (713) 946-4441