

Microlinea™ Series 3 - Wall Wash

(Nominal 2" Luminous Aperture)



Catalog Number	Type
Project Name	

ML3WW-LED

Suspended Mount, Ceiling Mount, or Wall Mount

3 1/8" x 3 1/2" Direct Wall Wash



S P E C I F I C A T I O N S

Housing

One-piece .080" thick extruded aluminum. Die-cast aluminum end caps are secured with no visible fasteners. Standard nominal lengths are 2', 3', 4', 6' and 8'.

Finish

Standard and premium finishes are baked powder coat electrostatically applied (2.0 mil minimum thickness) to assure aesthetics and durability. Standard finish for stems and canopies is white.

Finish of wall bracket arms and wall plate to match fixture housing.

Optical Control

Clear Acrylic Snap-in Enclosure with a concentrating film insert - standard.

Reflector

Three-piece extruded aluminum assembly with combination specular and high reflectance white finish.

Extended Arm Wall Brackets

Extruded aluminum arms with die-cast aluminum wall plate. Standard arm lengths are 12", 18", 24" and 30".

Integral Controls

Contact factory for daylight and/or occupancy sensor controls.

Light Engine

LED light source available standard for 3000K, 3500K and 4000KCCT, in High and Medium outputs, and 80 or 90 CRI. Standard outputs at 80 CRI:

HO - High Output

*2399 Total Delivered Lms. at 41 System Watts (Values per 4' using 4000K LED modules)

MO - Medium Output

*1596 Total Delivered Lms. at 25 System Watts (Values per 4' using 4000K LED modules)

Driver

LED power supply is UL/CUL recognized, 0-10V dimming available, and 120-277 universal voltage. 347V is available.

Circuitry

All fixtures are factory pre-wired for a single circuit. Provision for multiple switching/circuiting is optional.

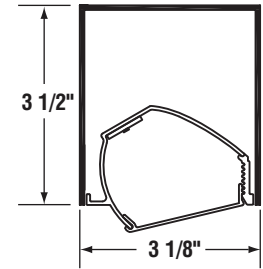
Wiring

All fixtures intended for continuous rows are provided with factory installed quick-connect wiring.

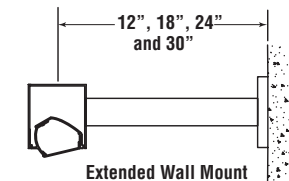
Certification

Fixtures are ETL listed for use in 'Dry or Damp Applications'. Conforms to UL Standard #1598 and to CAN/CSA #C22.2No.250.0.

*Due to continued advancement in LED technology, lumen performance is subject to change. Please visit our website for the most up-to-date information.



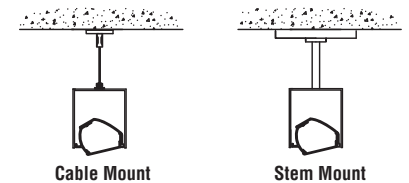
ML3WW-HO
ML3WW-MO



Extended Wall Mount



Ceiling Mount



Cable Mount

Stem Mount

Sample Catalog Number: **ML3WW - HO - K40 - 80 - 4 - CN - F01M - 120 - DIM1 - OPTIONS**

<p>Microlinea Series 3 Wall Wash - Direct</p> <p>Lumen Output / 4': HO - High Output = 2399 Total Lms. - 59 Lm/W (Using 4000K) MO - Medium Output = 1596 Total Lms. - 64 Lm/W CO - Custom Output (Contact factory for available outputs)</p> <p>CCT: K30-3000K, K35-3500K, K40-4000K</p> <p>CRI: 80 (Standard), 90 (Optional)</p> <p>Fixture Lengths: 2', 3', 4', 6', 8' and 12'</p> <p>Mounting: CN = Cable (Non T-Bar) Fully Adj. (36" Std.) CN = Cable (15/16" Tbar) Fully Adj. (36" Std.)</p> <p>P = Rigid Stem (Up to 48" Std.) K = Swivel Stem (Up to 48" Std.) J = Ceiling Mount EA12 = 12" Ext. Arm Wall Bracket EA18 = 18" Ext. Arm Wall Bracket EA24 = 24" Ext. Arm Wall Bracket EA30 = 30" Ext. Arm Wall Bracket</p> <p>Standard Finish: F01M Matte White Premium Finishes: F01G Gloss White F02 Ivory F03 Stonewash F04 Camel F05 Gray Day F06 Pebble Beach F07 Steel F08 Gray Seal F09 Mocha F10 Bronzed F11G Gloss Black F11M Matte Black F12 Ultrasonic Clear F13 Merlot F14 Red Skies F15 Lemon F16 Forest Hunter F20 Blue Print F21 Reflex Blue F22 Navy FCC Custom Color</p> <p>Voltage: 120V, 277V, 347V or UNV (Universal Voltage)</p> <p>Dimming: DIM1 = Std. Driver - No Dimming DIM1 = Std. Driver wired for Dimming - 100% to 1% DIM0 = Optional Driver wired for Dimming - 100% to 0% (Dark)</p> <p>Options: NLCKT = Night-Light Circuit (Common Neutral) EMCKT = Emergency Circuit (Separate Hot & Neutral) EBPHST = Self-Test Emergency Battery Pack (10 Watt) GTD = Generator Transfer Device FS = Fused Drivers</p>	
--	--



ML3WW - Wall Wash

Suspended, Ceiling or Wall Mount

ML3WW-HO-K40



High Output

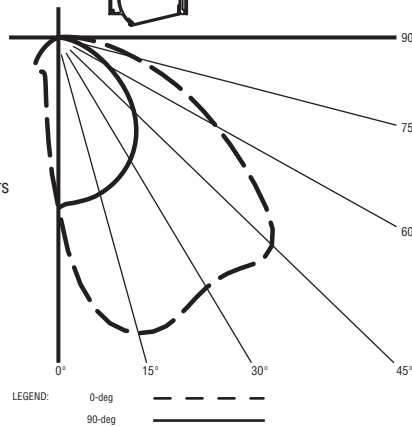
Asymmetric Wall Wash Optical Control

Catalog Number: ML3WW-HO-K40-80-4'-X-120
 Report Number: UL#904971.ies
 Luminaire Description: Extruded Aluminum Housing with Specular Upper and Lamp Side Reflectors and Matte White Wall Side Extrusion
 LED Module: Multiple White Low-Power Light Emitting Diodes (LEDs) in a precise layout.

Total Luminaire Efficacy = 58.9 Lm/W

0% Up 100% Down

Color Rendering Index (CRI) = 82



ZONAL LUMEN SUMMARY

Zone	Lumens	%Fixture
0- 30	627	26.1
0- 40	1050	43.8
0- 60	1930	80.4
0- 90	2391	99.7
90- 180	8	0.3
0- 180	2399	100.0

CANDELA DISTRIBUTION

	0.0	22.5	45.0	67.5	90.0
0	764	764	764	764	764
5	1112	1082	1009	891	746
15	1373	1347	1276	1088	722
25	1335	1324	1291	1146	668
35	1292	1255	1190	1090	584
45	1322	1258	1104	934	464
55	985	972	899	691	316
65	638	615	539	384	181
75	344	323	261	173	78
85	143	130	92	45	11
90	75	65	39	13	0

PRECISION ARCHITECTURAL LIGHTING

LED lighting facts®

A Program of the U.S. DOE

Light Output (Lumens) 2399
Watts 40.71
Lumens per Watt (Efficacy) 58.93

Color Accuracy 82
 Color Rendering Index (CRI)

Light Color 4000 (Bright White)
 Correlated Color Temperature (CCT)

Warm White
Bright White
Daylight

2700K 3000K 4500K 6500K

Warranty** Yes

All results, except LED Lumen Maintenance, are according to IESNA LM-79-2008: Approved Method for the Electrical and Photometric Testing of Solid-State Lighting. The U.S. Department of Energy (DOE) verifies product test data and results.

** See www.lightingfacts.com/products for details.

Registration Number: 1NRP-NEXMDE (7/30/2015)
 Model Number: ML3WW-HO-K40-4-XX-XX-UNV
 Type: Luminaire - Wallwash

ML3WW-MO-K40



Medium Output

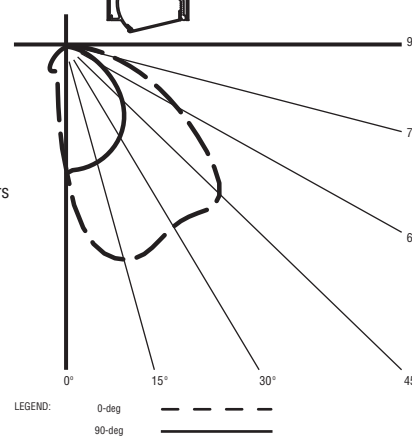
Asymmetric Wall Wash Optical Control

Catalog Number: ML3WW-MO-K40-80-4'-X-120
 Report Number: UL#904972.ies
 Luminaire Description: Extruded Aluminum Housing with Specular Upper and Lamp Side Reflectors and Matte White Wall Side Extrusion
 LED Module: Multiple White Low-Power Light Emitting Diodes (LEDs) in a precise layout.

Total Luminaire Efficacy = 64.3 Lm/W

0% Up 100% Down

Color Rendering Index (CRI) = 82



ZONAL LUMEN SUMMARY

Zone	Lumens	%Fixture
0- 30	420	26.4
0- 40	703	44.1
0- 60	1288	80.7
0- 90	1590	99.7
90- 180	6	0.3
0- 180	1596	100.0

CANDELA DISTRIBUTION

	0.0	22.5	45.0	67.5	90.0
0	524	524	524	524	524
5	754	732	684	609	511
15	914	896	852	734	492
25	886	879	859	767	454
35	861	834	791	727	396
45	873	834	735	623	314
55	646	640	597	458	212
65	414	401	354	253	120
75	223	209	171	114	51
85	92	83	60	29	7
90	47	41	25	8	0

PRECISION ARCHITECTURAL LIGHTING

LED lighting facts®

A Program of the U.S. DOE

Light Output (Lumens) 1596
Watts 24.82
Lumens per Watt (Efficacy) 64.3

Color Accuracy 82
 Color Rendering Index (CRI)

Light Color 4000 (Bright White)
 Correlated Color Temperature (CCT)

Warm White
Bright White
Daylight

2700K 3000K 4500K 8500K

Warranty** Yes

All results, except LED Lumen Maintenance, are according to IESNA LM-79-2008: Approved Method for the Electrical and Photometric Testing of Solid-State Lighting. The U.S. Department of Energy (DOE) verifies product test data and results.

** See www.lightingfacts.com/products for details.

Registration Number: 1NRP-F40BR2 (7/30/2015)
 Model Number: ML3WW-MO-K40-4-XX-XX-UNV
 Type: Luminaire - Wallwash

For more information, visit our website at www.pal-lighting.com



Precision Architectural Lighting 4830 Timber Creek Drive Houston, Texas 77017
 Tel 713.946.4343 Fax 713.946.4441 www.pal-lighting.com



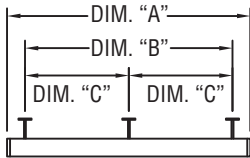
Made in America

ML3WW - Wall Wash

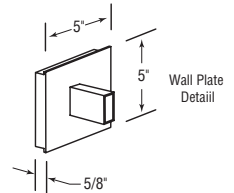
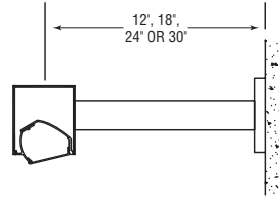
Suspended, Ceiling or Wall Mount

Standard Fixture Lengths and Mounting Centers

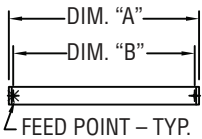
Wall Mount



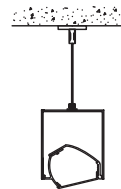
FIXTURE LENGTH	MOUNTING CENTERS	
	DIM. "A"	DIM. "B"
48 7/8"	34 7/8"	—
95 11/16"	81 11/16"	—
142 1/2"	128 1/2"	64 1/4"



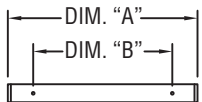
Cable Mount



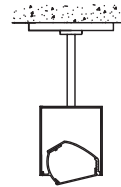
FIXTURE LENGTH	MTG. CENTERS
	DIM. "B"
48 7/8"	45 7/8"
95 11/16"	92 11/16"
142 1/2"	139 1/2"



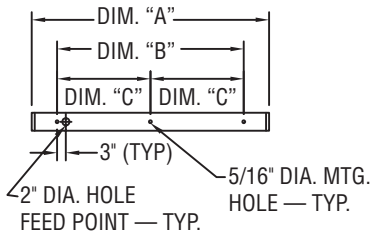
Stem Mount



FIXTURE LENGTH	MTG. CENTERS
	DIM. "B"
48 7/8"	34 7/8"
95 11/16"	81 11/16"
142 1/2"	128 1/2"



Direct Ceiling Mount



FIXTURE LENGTH	MOUNTING CENTERS	
	DIM. "A"	DIM. "B"
48 7/8"	34 7/8"	—
95 11/16"	81 11/16"	—
142 1/2"	128 1/2"	64 1/4"



PAL RESERVES THE RIGHT TO CHANGE PRODUCT DESIGN AND SPECIFICATIONS. CONTACT FACTORY FOR MOST RECENT PRODUCT INFORMATION.

