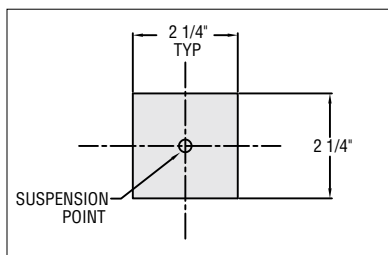


Microlinea Series 2, 3 & 5

Unlit Connector Specifications

S P E C I F I C A T I O N S



Microlinea Series 2

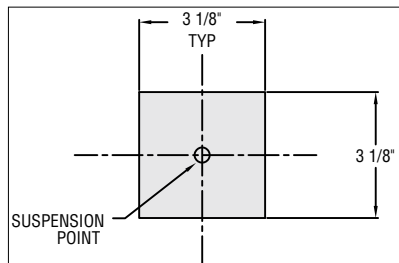
Direct only 2 1/4" w x 2 1/4" h fixtures

Indirect/Direct 2 1/4" w x 4 1/2" h fixtures

Connector

Construction: With Direct Fixtures: 2 1/4" high one piece .070" thick extruded aluminum with removable cover plate for easy access.
 With Indirect/Direct Fixtures: 4 1/2" high one piece .070" thick extruded aluminum with removable cover plate for easy access.

Finish: Standard and premium finishes are baked powder coat electrostatically applied (2.0 mil. minimum thickness) to assure aesthetics and durability.



Microlinea Series 3

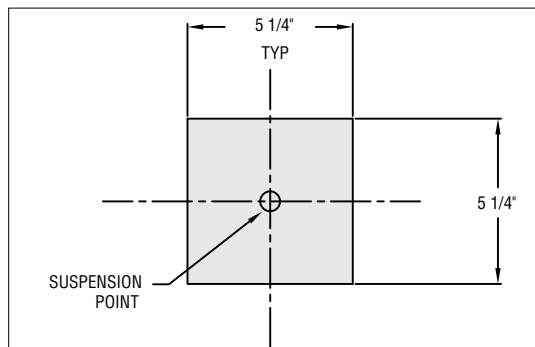
Direct only 3 1/8" w x 3 1/2" h fixtures

Indirect/Direct 3 1/8" w x 5" h fixtures

Connector

Construction: With Direct Fixtures: 3 1/2" high one piece .090" thick extruded aluminum with removable cover plate for easy access.
 With Indirect/Direct Fixtures: 5" high one piece .090" thick extruded aluminum with removable cover plate for easy access.

Finish: Standard and premium finishes are baked powder coat electrostatically applied (2.0 mil. minimum thickness) to assure aesthetics and durability.



Microlinea Series 5

Direct only 5 1/4" w x 3 11/16" h fixtures

Indirect/Direct 5 1/4" w x 5 3/8" h fixtures

Connector

Construction: With Direct Fixtures: 3 11/16" high one piece .090" thick extruded aluminum with removable cover plate for easy access.
 With Indirect/Direct Fixtures: 5 3/8" high one piece .090" thick extruded aluminum with removable cover plate for easy access.

Finish: Standard and premium finishes are baked powder coat electrostatically applied (2.0 mil. minimum thickness) to assure aesthetics and durability.

H O W T O O R D E R

Standard connectors are 2-way (90° corner), 3-way "T", and 4-way "X".

Catalog Logic

All connectors should be specified and ordered as follows:

Series

- MLS2-D
- MLS3-D
- MLS5-D
- MLS2-I/D
- MLS3-I/D
- MLS5-I/D

Mounting

CN = Cable (Non-Tbar) Fully Adjustable (36" Standard)

MLS3 - D - L90 - CN - F01M

Connector Type

- L90 = 90° Corner
- T = 3-Way Connector
- X = 4-Way Connector

Standard Finishes

- F01M Matte White
- Premium Finishes**
- F01G Gloss White
- F02 Ivory
- F03 Stonewash
- F04 Camel
- F05 Gray Day
- F06 Pebble Beach
- F07 Steel
- F08 Gray Seal
- F09 Mocha
- F10 Bronzed
- F11G Gloss Black
- F11M Matte Black
- F12 Ultrasonic Clear
- F13 Merlot
- F14 Red Skies
- F15 Lemon
- F16 Forest Hunter
- F17 Olive
- F18 Khaki
- F19 Heather Green
- F20 Blue Print
- F21 Reflex Blue
- F22 Navy
- FCC Custom Color

