

B.U.G. Ratings
(Backlight / Uplight / Glare)
High Output: B1 - U0 - G1
Medium Output: B1 - U0 - G1
(See Photometric Files for More Information)

Microlinea Series 5 Direct Standard & Asymmetric Wet Location - IP65 - IK10 Rated

The MICROLINEA WET LOCATION SERIES 5 is a stylish and versatile outdoor fixture designed to deliver architectural-grade performance in demanding environments. Engineered for durability, it is fully sealed to resist moisture, dust, insects, and impact, making it ideal for exterior applications such as building facades, overhangs, and outdoor corridors. This compact fixture features precise light direction while maintaining a clean, modern aesthetic that complements contemporary architectural design.

Qty:

Type:

Project Name:

Catalog Number:

SPECIFICATIONS

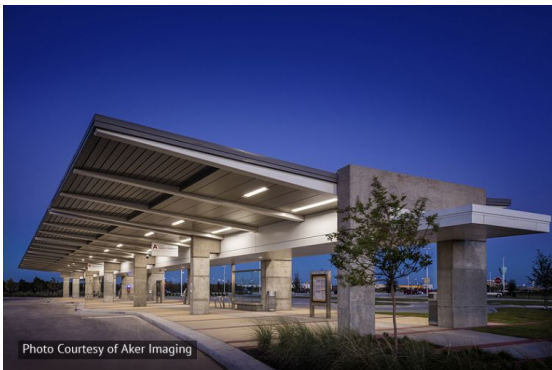
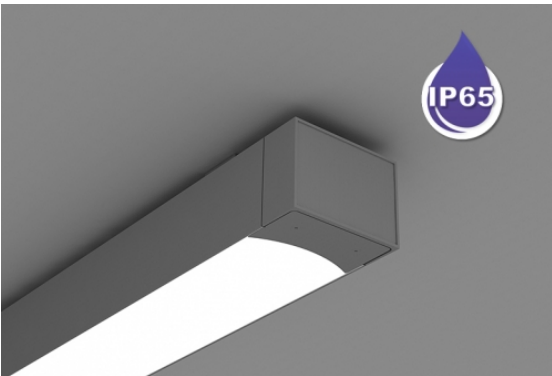


Photo Courtesy of Aker Imaging

Housing

One piece .125" thick extruded aluminum. Diecast aluminum end caps are fully gasketed and secured with no visible fasteners. Standard lengths are nominal 2', 3', 4', 6' and 8'. Provisions may be made for continuous rows of virtually any length.

Optical Control

(LOH) .125" thick, high transmittance extruded acrylic lens formulated for maximum diffusion of the LED light source and continuously gasketed against dust and water intrusion.

(VR) Vandal Resistant: .125" thick, high transmittance extruded 100% D.R. acrylic lens with tamper-resistant hardware.

(FLA) *Asymmetric Only* .100" thick, lightly frosted, high transmittance extruded acrylic snap-in lens with 50% DR content, formulated to allow asymmetric light distribution. Lens is continuously gasketed against dust and water intrusion.

Reflector

.060" thick formed aluminum finished with a high reflectance white baked powder coat.

Driver (Standard)

Power supply is UL/CUL recognized, 120-277 universal voltage. 347V also available.

Light Engines/Color Temps./CRI

LED light sources are available for the following Co-ordinated Color Temperatures (CCT):

Standard: 3000K, 3500K, & 4000K

Color Rendering Index (CRI): Standard: 80

Finish

Standard and custom finishes are baked powder coat electrostatically applied (2.0 mil minimum thickness) to assure aesthetics and durability.

Mounting

All mounting components are aluminum or stainless assemblies is matte black. Stem/Canopy assemblies are painted to match fixture housing steel. Standard finish for wall, recessed, and ceiling

Internal Construction

All internal mechanical components, including fasteners, are aluminum or stainless steel.

Circuitry

All fixtures are factory pre-wired for a single circuit. Provision for multiple switching/circuiting is optional.

Warranty

10 year limited warranty. No other warranty is expressed or implied. Complete warranty terms can be assessed by visiting: <https://pal-lighting.com/company/warranty>

Certifications

Fixtures are ETL listed for use in 'Wet Locations.' Ambient operating temperature rated from -30° C up to 50° C, and 0° C up to 50° C with battery back-up. IP-65 rated** IC rated (Recess Mount)

MICROLINEA Series 5 Direct Wet Location - Performance Data

| Standard Lumen Outputs Available | Standard High Output – (HO) Standard | Standard Medium Output – (MO) Standard | Standard High Output – (HO) Asymmetric | Standard Medium Output – (MO) Asymmetric |
|-----------------------------------|---|--|--|--|
| Delivered Lumens/Foot - Standard | 807 | 487 | 808 | 575 |
| Input Watts/Foot - Standard | 10 | 5 | 9 | 5 |
| Lumens/Watt (Efficacy) - Standard | 79 | 87 | 93 | 99 |
| Custom Lumens Outputs Available | | | | |
| Custom Lumens/Foot | Contact Factory for Available Output Ranges | | | |

Notes:

- Data listed above is based on using 3500K CCT and 80 CRI LED modules
- *PAL uses fully programmable drivers. Custom outputs (CO) are available. Contact specs@pallighting.com for more information.
- All values are based on calculated LM-79 photometric reports.

MICROLINEA DIRECT WET LOCATION SERIES

5 SUSPENDED/CEILING/RECESSED/WALL

ORDERING GUIDE

—————

| Series | Outputs | Color Temperature (CCT) | Color Rendering | Fixture Lengths |
|--|---|-------------------------|----------------------------------|---------------------------------------|
| ML5WL65-D Microlinea Series 5 Direct (Wet Location) | HO High Output | K30 3000 Kelvin | 80 80 CRI (Standard) | 2' 2 Ft |
| | MO Medium Output | K35 3500 Kelvin | | 3' 3 Ft (Direct Standard Only) |
| ML5WL65ASY-D Microlinea Asymmetric Series 5 Direct (Wet Location) | CO Custom Outputs (Contact factory for available output range) | K40 4000 Kelvin | RGBW Red/Green/Blue/White | 4' 4 Ft |
| | | | | 6' 6 Ft |
| | | | | 8' 8 Ft |

For continuous rows of 8' or longer, specify row length in 1' increments.
Example: 13'

————

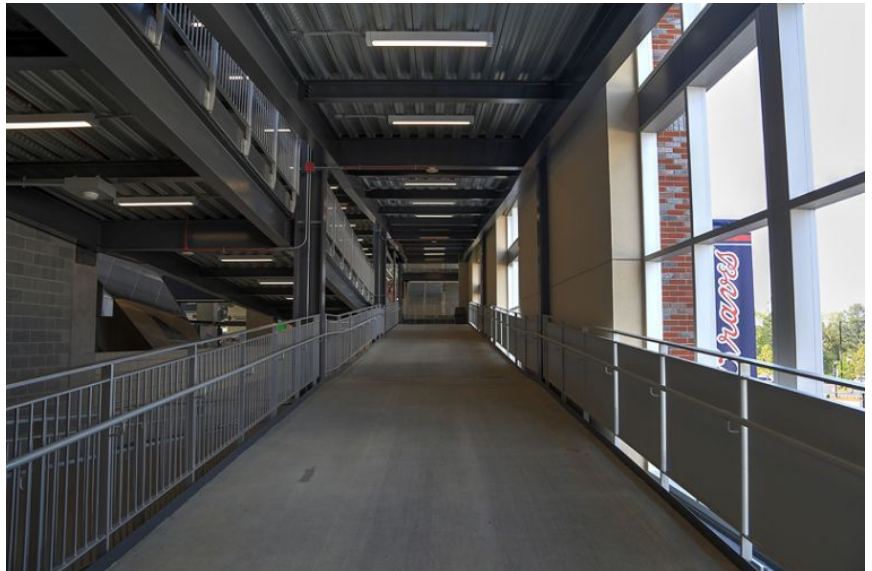
| Mounting | Direct Optical Control | Finishes | Feed Location | Voltage |
|---|--|--|---------------------|---|
| P Rigid Stem (Up to 24" Std.) Wall | LOH LED Optimized Acrylic Gasketed Lens | F01M Matte White (Standard) | EF End Feed | 120 120V |
| W Mount | | F10 Bronzed | TF Top Feed | 277 277V |
| R Recessed Mount | VR 100% D.R. Acrylic Lens with Tamper-Resist Hardware | F11T Textured Black | BF Back Feed | UNV Universal Voltage (120V thru 277V) |
| J Ceiling Mount | FLA Frosted Acrylic Lens - Asymmetric | F12 Ultrasonic Clear | | 347 347V |
| WRJ Wall Mount w/Recess J-Box | | FCC Custom Color Match Provide RAL Color# ____ | | |
| JRJ Ceiling Mount w/Recess J-Box | | | | |

——

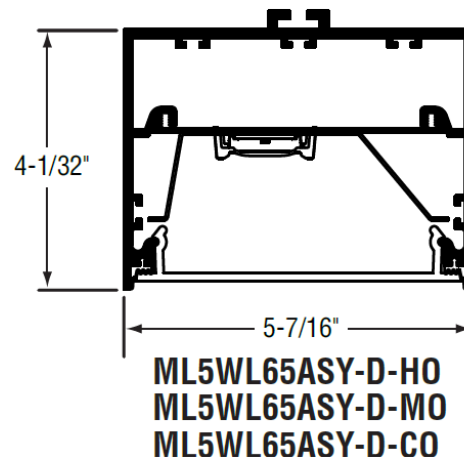
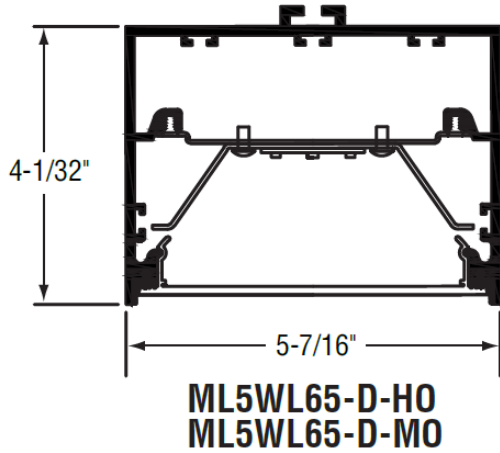
| Drivers - Dimming ^{2,4} | Emergency Options |
|----------------------------------|--|
| DIMX Standard No Dimming | EBPHST Emergency Battery Pack - 10 Watt Self-Testing, (Integral Mount) |
| DIM1 Dimming 100% to 1% | |
| CWD Cold Weather Driver | EMCKT Emergency Circuit (Separate Hot & Neutral) |
| DMX DMX Protocol Driver | |
| DALI DALI Protocol Driver | |

Notes:

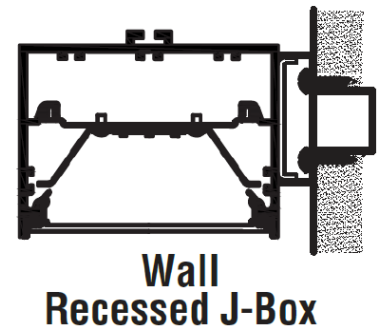
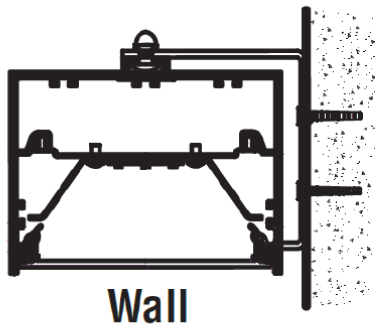
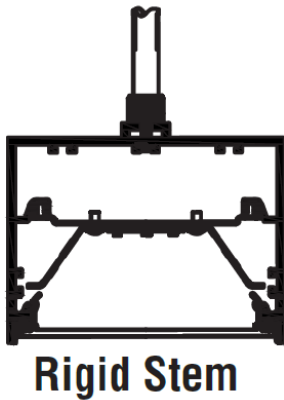
- All fixtures are factory pre-wired for a single circuit. Provisions for multiple switching/circuiting is optional.
- Unless otherwise requested, all fixtures contain integral-mount "power-on-board" drivers.
- All fixtures intended for continuous rows are provided with factory installed quick-connect wiring.
- Standard power supply (driver) is UL/CUL recognized, & is available w/0-10V dimming capability & 120 - 277 universal voltage.
- Standard emergency battery pack is a 10 Watt constant power, self-testing, UL 924 listed pack from Iota Engineering - providing 1000 lumens of light for approximately 90 minutes. Battery packs are integral mounted unless otherwise notified. *Note: Remote mounted battery packs are not wet location listed.
- Custom length fixtures and fixture rows may require a longer lead time. Contact specs@pallighting.com for more information.
- RGBW power supply by EldoLED is UL recognized, and is compatible with DALI and DMX protocols.
- IP rated sensors and control systems are available. Contact specs@pallighting.com for more information.



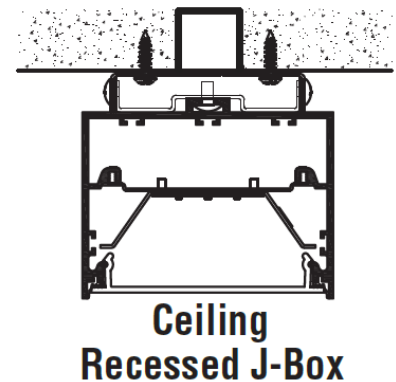
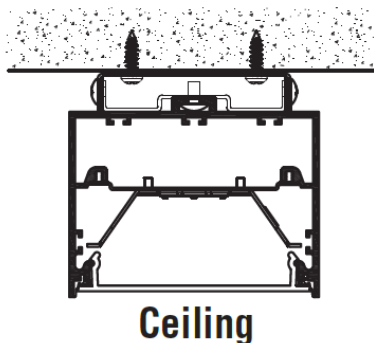
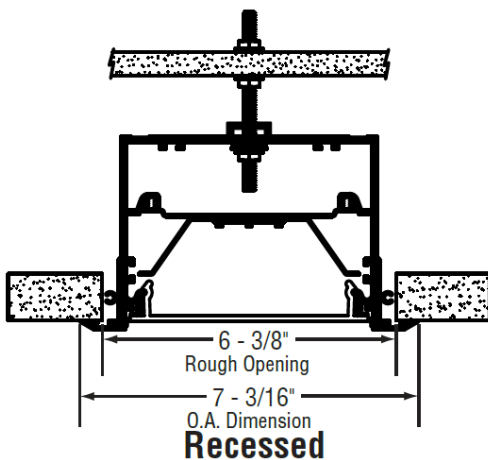
Suspended, Ceiling, Recessed or Wall Mount - Wet Location



Rigid Stem, Wall & Wall Recessed J-Box:



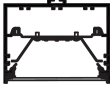
Recessed, Ceiling & Ceiling Recessed J-Box:



PHOTOMETRY / LIGHT DISTRIBUTIONS

ML5WL65-D-HO-K40-LOH

Wet Location Direct-High Output

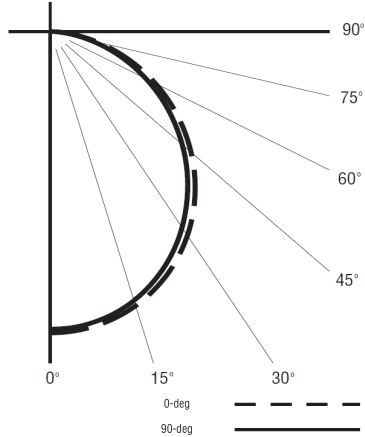


Catalog Number:
ML5W65L-D-HO-K40-4'-X-LOH-120

Report Number:
UL#1094335.ies

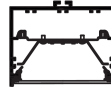
Total Efficacy: 78.7 Lm/W Input
Power per 4': 40.97 W
Lumens per 4': 3228

0% Up 100% Down
Color Rendering Index (CRI) = 83



ML5WL65-D-MO-K40-LOH

Wet Location Direct-Medium Output

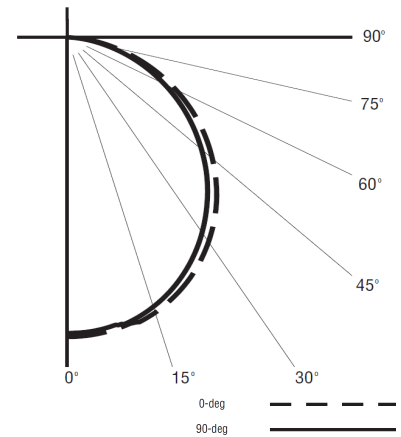


Catalog Number:
ML5WL65-D-MO-K40-4'-X-LOH-120

Report Number:
UL#1094336.ies

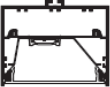
Total Efficacy: 86.9 Lm/W Input
Power per 4': 22.39 W
Lumens per 4': 1948

0% Up 100% Down
Color Rendering Index (CRI) = 83



ML5WL65ASY-D-HO-K40-FLA

Wet Location Direct-High Output



Catalog Number:
ML5WL65ASY-D-HO-K40-4'-X-FLA-120

Report Number:
#LLIA000998-002.ies

Total Efficacy: 93.4 Lm/W
Input Power per 4': 34.6 W
Lumens per 4': 3233

0% Up 100% Down
Color Rendering Index (CRI) = 83

