

IP65-RATED MICROLINEA™ SERIES
WET LOCATION LED



Precision
Architectural
Lighting

lighting facts™

A Program Under U.S. DOE

Light Output (Lumens)	3934
Watts	38.23
Lumens per Watt (Efficacy)	102.9

Color Accuracy Color Rendering Index (CRI)	94
---	----

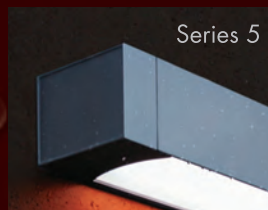
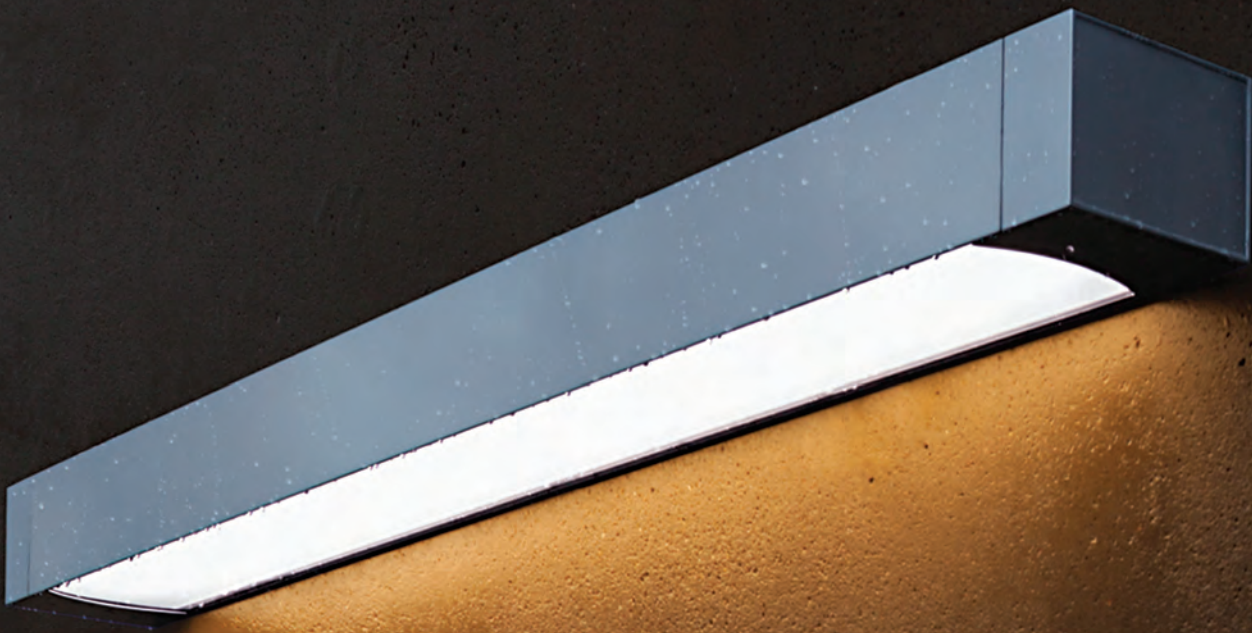
Light Color Correlated Color Temperature (CCT)	3994 (Bright White)	
Warm White	Bright White	Daylight
2700K	3000K	5000K

Warranty**	Yes
------------	-----

All details about LED lumens, lumens efficacy are according to DOE's (DOE-7-2008) measured efficiency by Photonic Area Measurement Testing at Some Basic Lighting The U.S. Department of Energy (DOE) verified product test data and results.

** See www.lightingfacts.com/products-for-details.

Registration Number: NMPA#0023 (2-14-2013)
 Model Number: HL-SPD-0040-DIMMABLE-DECO-2000K/AAA/
 Total Luminaire Length:



- Direct-only and indirect-direct configurations are available in both Series 3 and Series 5
- Durable .125-in. thick extruded acrylic lenses are sealed with an extruded, expanded silicone rubber gasket, and provide smooth diffusion of the LED source
- Extruded aluminum housings are .125-in. thick, protected with a durable baked powder coat finish
- Die-cast aluminum end caps secured with no visible fasteners and sealed with a molded silicone rubber gasket
- All fasteners and mounting components are either stainless steel or aluminum for long-lasting performance
- Both Direct and Indirect-Direct configurations carry an IP65 rating

HIGH-PERFORMANCE SYSTEM SOLUTIONS



THE ML SERIES WET LOCATION FAMILY INCLUDES FEATURES THAT ADDRESS A WIDE RANGE OF CHALLENGING ENVIRONMENTS, SUCH AS OUTDOOR CANOPIES, BUILDING FACADES, TRANSIT STATIONS AND PARKING STRUCTURES.

- Lumen output may be adjusted via factory-programmable LED drivers
- 0-10V dimming options include
- Dim-to-10% and Dim-to-1%
- Equipped with standard LED drivers rated at temperatures of -30° Celsius to
- 50° Celsius, or optional cold-weather drivers
- LED modules are available in 3000K, 3500K and 4000K color temperatures
- Available with tamper-resistant hardware and 100% DR-acrylic lenses for vandal-prone areas

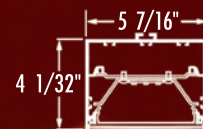
MICROLINEA
SERIES WET
LOCATION
DIRECT

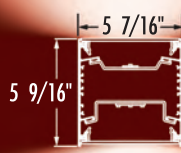
Combining flexibility with proven ruggedness, the ML Series Direct features a variety of exterior mounting options, including:

- Suspended, with stainless steel rigid-stem mounting hardware
- Surface/ceiling, via a low-profile, discreet mounting bracket
- Recessed, typically for use in an exterior ceiling application
- Wall, with inconspicuous stainless-steel mounting brackets



The ML-series Direct Wet Location features a full cut-off design that controls and directs illumination downwards, conforming to the principles of the International Dark-Skies Association (IDA).





The ML Series WL Indirect-Direct affords an extra dimension to exterior illumination.



MICROLINEA SERIES WET LOCATION INDIRECT-DIRECT

- The ML Series WL Indirect-Direct is available in both 3-in. and 5-in. aperture sizes, and has the same features and options as the direct-only
- To simplify maintenance, all upper and lower LED modules and drivers can be accessed through the fixture's lower aperture
- Available in suspended and wall-mount options
- Indirect aperture available with multiple static LED color options



**Precision
Architectural
Lighting**

4830 Timber Creek Drive

Houston, TX 77017

P: 713.946.4343

www.pal-lighting.com

A premier manufacturer
of architectural grade
lighting systems,

Precision Architectural

Lighting combines

quality craftsmanship,

outstanding product

performance and

personalized customer

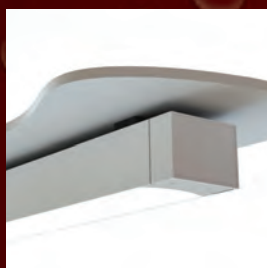
support, partnering with

you to ensure your

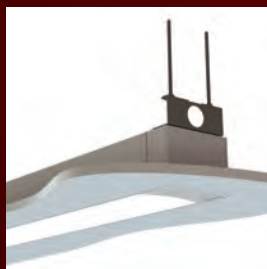
complete satisfaction.



STEM-DIRECT &
INDIRECT/DIRECT



CEILING-DIRECT



RECESSED-DIRECT



WALL-DIRECT &
INDIRECT/DIRECT

MICROLINEA™ SERIES WET LOCATION LED

SPECIFICATIONS

SERIES

MICROLINEA SERIES 3 WL - DIRECT	ML3WL-D
MICROLINEA SERIES 5 WL - DIRECT	ML5WL-D
MICROLINEA SERIES 3 WL - INDIRECT/DIRECT	ML3WL-I/D
MICROLINEA SERIES 5 WL - INDIRECT/DIRECT	ML5WL-I/D

LUMEN OUTPUT (Rated per 4' section)

DIRECT

High Output:	Series 3 - 2683 Lms. (4000K)	HO
	Series 5 - 3226 Lms. (3500K)	HO
Medium Output:	Series 3 - 1713 Lms. (4000K)	MO
	Series 5 - 1949 Lms. (3500K)	MO

INDIRECT/DIRECT

High Output/High Output:	Series 3 - 5616 Lms. (4000K)	HO/HO
	Series 5 - 6461 Lms. (4000K)	HO/HO
High Output/Med. Output:	Series 3 - 4635 Lms. (4000K)	HO/MO
	Series 5 - 5208 Lms. (4000K)	HO/MO
Med. Output/High Output:	Series 3 - 4575 Lms. (4000K)	MO/HO
	Series 5 - 5196 Lms. (4000K)	MO/HO
Med. Output/Med. Output:	Series 3 - 3585 Lms. (4000K)	MO/MO
	Series 5 - 3934 Lms. (4000K)	MO/MO

CCT

3000 K	K30
3500 K	K35
4000 K	K40

STANDARD LENGTHS

2', 3', 4', 6' and 8' (Nominal)	2, 3, 4, 6, or 8
---------------------------------	------------------

MOUNTING (Stainless steel)

RIGID STEM ASSY. (Up to 24" standard in 6" increments)	P
CEILING MOUNT BRKT. ASSY.	J
RECESS MOUNT BRKT. ASSY.	R
WALL MOUNT BRKT. ASSY.	W

OPTICAL CONTROL

Both Indirect Apertures and Direct Apertures	LOH
LED OPTIMIZED HIGH TRANSMITTANCE LENS	LOH

FINISHES

Standard Finishes	
MATTE WHITE	F01M
BRONZED	F10
TEXTURED MATTE BLACK	F11T
ULTRASONIC CLEAR	F12
CUSTOM COLOR	FCC

FEED CORD LOCATION

END FEED	EF
TOP FEED (N/A for Recess Mount)	TF

VOLTAGE

120V, 277V	120V or 277V
------------	--------------

OPTIONS

EMERGENCY CIRCUIT	EMCKT
EMERGENCY BATTERY PACK (10 Watt, Self-Testing)	EBPHST
DIMMING	
100% to 10%, 100% to 1%	DIM10 or DIM1
FUSED DRIVERS	FS
COLD WEATHER DRIVER (-40°C Ambient Temp. Rating)	CWD
VANDAL-RESISTANT FEATURE	VR
(Tamper-proof hardware, 100% DR Acrylic Lens)	
RECESSED FLANGE	RF