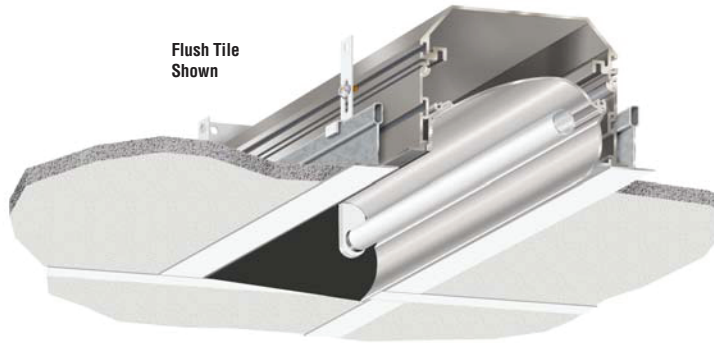


# Microlinea™ Recessed Series 5 Wall Wash - Fluorescent

(Nominal 4" Luminous Aperture)

Catalog Number	Type
Project Name	



## S P E C I F I C A T I O N S

### Housing

Three piece extruded aluminum with single length sections of 2', 3' or 4'. Consult factory for row lengths longer than 4'.

### Optical Controls

- Open
- (CAE) Clear Acrylic Enclosure (Snap-in)

### Reflector

Three piece extruded aluminum assembly. Upper and lamp side extrusions are specular. Wall side extrusion is baked "flat black" powder coat to minimize glare to room side.

### Ballast

- Standard ballasts for T5 and T5HO lamps are UL/CUL listed, Class P, HPF, electronic, universal 120/277volt, programmed rapid start with <10% THD.

### Circuitry

All fixtures are factory pre-wired for a single circuit.

### Certification

All fixtures are UL/CUL listed for use in 'Dry Applications'. 'Damp Location' is optional.

**Standard Lengths:**  
2', 3' and 4'

**Series**  
MLR5WW  
Wall Wash

Consult factory for row lengths longer than 4'.

**Ceiling Type**  
FT = 15/16" or 9/16" Grid with Flush Tile  
TT = 15/16" or 9/16" Grid with Tegular Tile  
SG = Screw Slot Grid

# MLR5WW-4-FT-120-T5-[ ]

**Voltage**  
120  
277  
347

**Lamp Type**  
T5  
T5HO

### Options

**NLCKT**  
Night Light Circuit  
(Common Neutral)  
(N/A for 2' or 3')

**EMCKT**  
Emergency Circuit  
(Separate Hot & Neutral)  
(N/A for 2' or 3')

**EBPL**  
Emergency Battery Pack  
(635-700 Lumens)  
(N/A for 2' or 3')

**EBPH**  
Emergency Battery Pack  
(975-1325 Lumens)  
(N/A for 2' or 3')

**Dim**  
Dimming

**FS**  
Fused Ballasts

**GTD**  
Generator Transfer  
Device  
(N/A for 2' or 3')

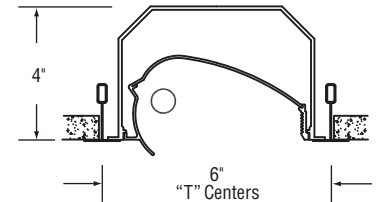
**CP**  
Chicago Plenum

**DL**  
Damp Location

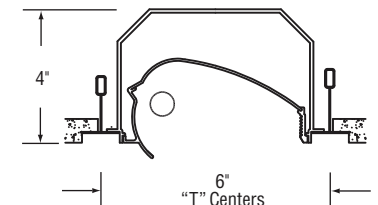
**CAE**  
Clear Acrylic Enclosure

## Grid Ceilings

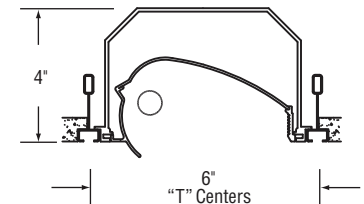
(1 - T5 or T5HO Lamp)



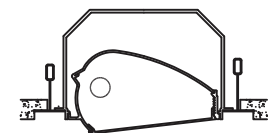
MLR5WW-FT  
Flush Tile



MLR5WW-TT  
Tegular Tile



MLR5WW-SG  
Screw Slot Grid



Shown with optional Clear  
Acrylic Enclosure (CAE)



Precision Architectural Lighting 4830 Timber Creek Drive Houston, Texas 77017  
Tel 713.946.4343 Fax 713.946.4441 www.pal-lighting.com



Made in America