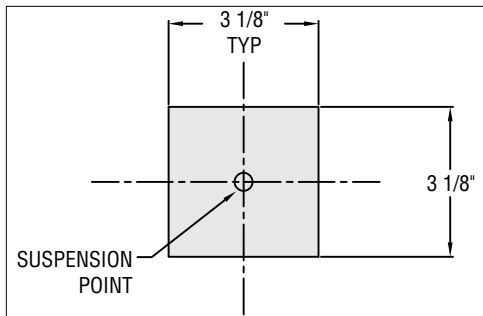


Catalog Number	Type
Project Name	

# Microlinea Series

## Connector Specifications

### S P E C I F I C A T I O N S



#### Microlinea Series

- Direct only or Indirect only** 3 1/8" w x 3 1/2" h fixtures
- Indirect/Direct** 3 1/8" w x 5" h fixtures

#### Connector Construction

- With Indirect or Direct Fixtures: 3 1/2" high one piece .090" thick extruded aluminum with removable cover plate for easy access.
- With Indirect/Direct Fixtures: 5" high one piece .090" thick extruded aluminum with removable cover plate for easy access.

#### Finish

Standard and premium finishes are baked powder coat electrostatically applied (2.0 mil. minimum thickness) to assure aesthetics and durability.

### H O W T O O R D E R

Standard connectors are 2-way (90° corner), 3-way "T", and 4-way "X".

#### Catalog Logic

All connectors should be specified and ordered as follows:

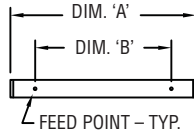
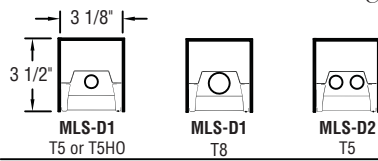
<p><b>SERIES</b></p>	<p><b>Mounting</b>  <b>CN</b> = Cable (Non-Tbar) Fully Adjustable (36" Standard)  <b>P</b> = Rigid Stem (Up to 48" Standard)  <b>K</b> = Swivel Stem (Up to 48" Standard)</p>
<h2>MLS - L90 - CN - F01G</h2>	
<p><b>CONNECTOR TYPE</b>  <b>L90</b> = 90° Corner  <b>T</b> = 3-Way Connector  <b>X</b> = 4-Way Connector</p>	<p><b>Standard Finishes</b>  <b>F01M</b> Matte White  <b>Premium Finishes</b>  <b>F01G</b> Gloss White    <b>F13</b> Merlot  <b>F02</b> Ivory            <b>F14</b> Red Skies  <b>F03</b> Stonewash      <b>F15</b> Lemon  <b>F04</b> Camel            <b>F16</b> Forest Hunter  <b>F05</b> Gray Day        <b>F17</b> Olive  <b>F06</b> Pebble Beach   <b>F18</b> Khaki  <b>F07</b> Steel              <b>F19</b> Heather Green  <b>F08</b> Gray Seal        <b>F20</b> Blue Print  <b>F09</b> Mocha            <b>F21</b> Reflex Blue  <b>F10</b> Bronzed         <b>F22</b> Navy  <b>F11</b> Black             <b>FCC</b> Custom Color  <b>F12</b> Ultrasonic Clear</p>



# Microlinea Series

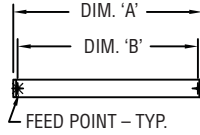
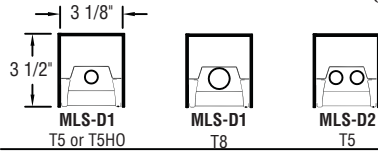
## Standard Fixture Lengths and Mounting Centers

### Stem Mount - Direct Configurations



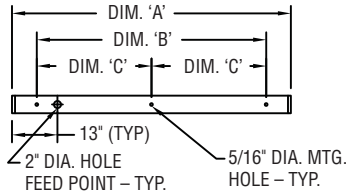
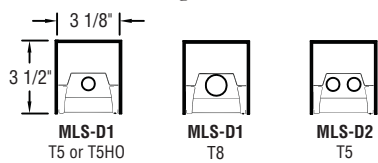
FIXTURE LENGTH DIM 'A'	MOUNTING CENTERS DIM 'B'
50"	36"
98"	84"
146"	132"

### Cable Mount - Direct Configurations



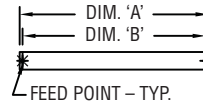
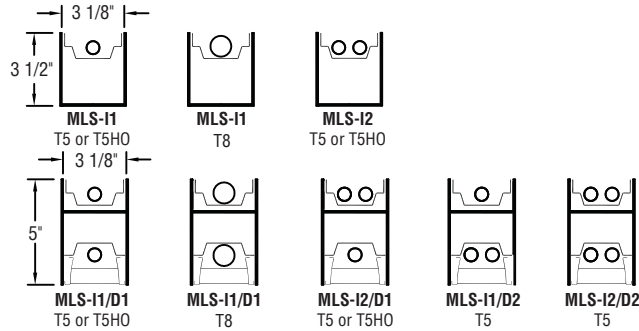
FIXTURE LENGTH DIM 'A'	MOUNTING CENTERS DIM 'B'
50"	48"
98"	96"
146"	144"

### Direct Ceiling Mount - Direct Configurations



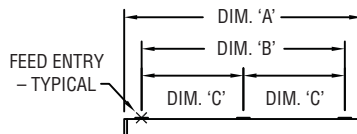
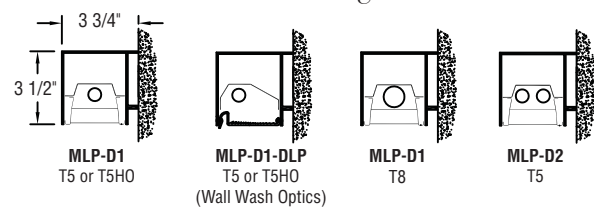
FIXTURE LENGTH DIM 'A'	MOUNTING CENTERS	
	DIM 'B'	DIM 'C'
50"	36"	—
98"	84"	—
146"	—	66"

### Stem and Cable Mount - Indirect and Indirect/Direct Configurations



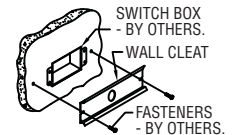
FIXTURE LENGTH DIM 'A'	MOUNTING CENTERS DIM 'B'
50"	48"
98"	96"
146"	144"

### Wall Mount - Direct Configurations

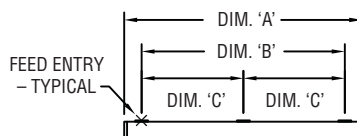
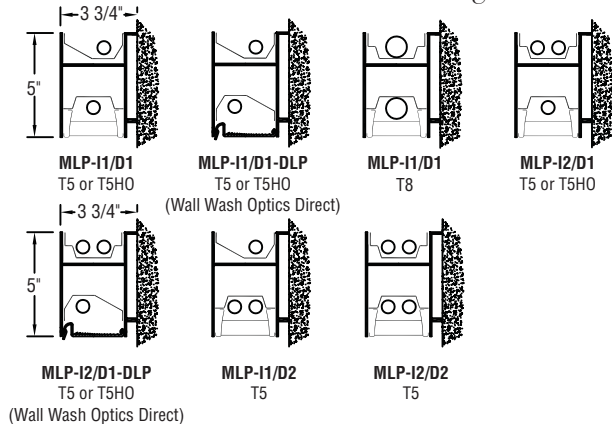


FIXTURE LENGTH DIM 'A'	MOUNTING CENTERS	
	DIM 'B'	DIM 'C'
50"	36"	—
98"	84"	—
146"	—	66"

WALL "CLEAT"  
Mounting Hole  
Arrangement

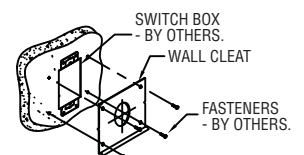


### Wall Mount - Indirect/Direct Configurations



FIXTURE LENGTH DIM 'A'	MOUNTING CENTERS	
	DIM 'B'	DIM 'C'
50"	36"	—
98"	84"	—
146"	—	66"

WALL "CLEAT"  
Mounting Hole  
Arrangement



PAL RESERVES THE RIGHT TO CHANGE PRODUCT DESIGN AND SPECIFICATIONS. CONTACT FACTORY FOR MOST RECENT PRODUCT INFORMATION.

