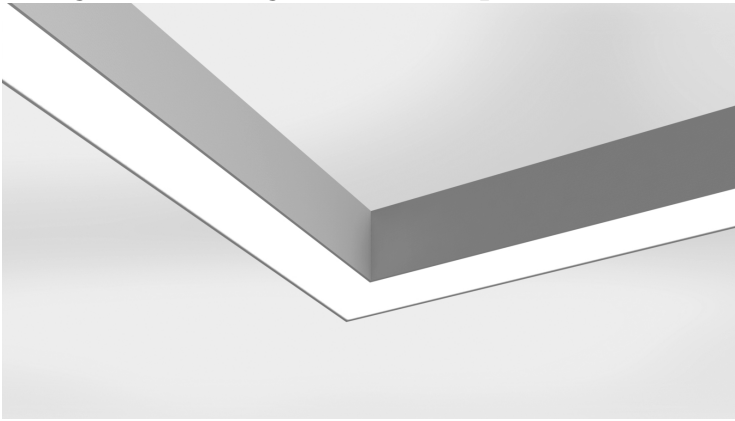


# Microlinea™ Ceiling Mount Series 3 - Wet Location-IP54

## Lighted 90 Degree Corner Specifications



### S P E C I F I C A T I O N S

#### Housing

One piece extruded aluminum, mitered and secured together to form a nominal 2' x 2' continuously lit 90° corner.

#### Optical Control

(Lenses are mitered to provide a continuous transition through the corner.)

(LOH) LED optimized high transmittance acrylic snap-in lens.

#### Gasketing

Fixture Side Gasket: Extruded silicone rubber - continuously run along both sides of fixture.

#### Moisture Shield

.030" thick clear polycarbonate

(Required on 90 degree corners and continuous rows only.)

#### Reflector/Heat Sink

.040" thick die-formed aluminum finished with a high reflectance white enamel.

#### Integral Controls

Contact factory for daylight and/or occupancy sensor controls.

#### Wiring

All fixtures intended for continuous rows are provided w/factory installed quick-connect wiring.

#### Driver

LED power supply is UL/CUL recognized, 0-10V dimming available, 120-277 universal voltage. 347V is available.

#### Light Engine

LED light source available standard for 3000K, 3500K and 4000K CCT, in high and medium light outputs, and 80 or 90 CRI. Standard outputs:

**HO** - High Output

\*746 Total Delivered Lms. and 7.3 Watts/Ft

**MO** - Medium Output

\*463 Total Delivered Lms. and 4.3 Watts/Ft

(\*All values using 3500K LED modules)

#### Circuitry

All fixtures are factory pre-wired for a single circuit. Provision for multiple switching/circuiting is optional.

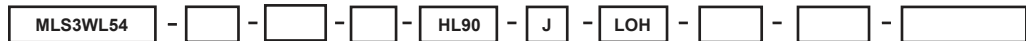
\*Due to continued advancement in LED technology, lumen performance is subject to change. Please visit our website for the most up-to-date information.

#### Certification

Fixtures are ETL listed for use in recessed 'Wet Locations.' Ambient operating temperature rated from -30°C up to 50°C, and 0°C up to 50°C with battery back-up. IP54 (Ingress Protection)

### H O W T O O R D E R

Sample Catalog Number: **MLS3WL54 - HO - K40 - 80 - HL90 - J - LOH - UNV - DIM1 - OPTIONS**



**MLS3WL54 Ceiling Mount Series Wet Location Corner**

Lumen Outputs: **HO** - High Output = 746 Total Lms/Ft - 104 Lm/W (2' x 2' Nominal Corners) **MO** - Medium Output = 463 Total Lms/Ft - 108 Lm/W **CO** - Custom Output = 1365 Lms/Ft - MAX. (Contact factory)

CCT: **K30** - 3000K, **K35** - 3500K, **K40** - 4000K

CRI: **80** (Standard), **90** (Optional)

Corner Type: **HL90** = Horizontal 90 Degree

Mountings: **J** = Ceiling Mount (Flush)

Optical Control: **LOH** = LED Optimized Acrylic Snap-in Lens - (Mitered)

Voltage: **UNV** (120/277 Universal Voltage), **347V**

Dimming: **DIMX** = Standard Driver - no Dimming **DIM1** = Standard Driver wired for Dimming - 100% to 1% **DIM0** = Optional Driver with Dimming - 100% to 0%

Options: **NLCKT** = Night-Light Circuit (Common Neutral) **EMCKT** = Emergency Circuit (Separate Hot & Neutral) **EBPHST** = Self-Testing Emergency Battery Pack (10 Watt)

**FS** = Fused Drivers

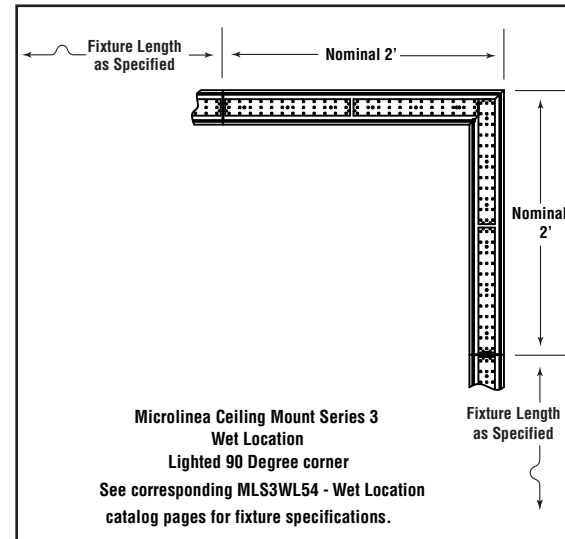
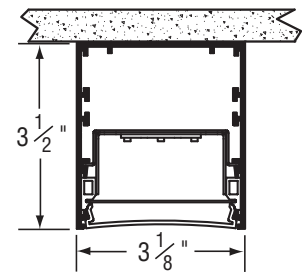
Catalog Number	Type
Project Name	

# Lighted Horizontal Corner - (Ceiling Mt.) - Wet Location-IP54

(\*Covered Ceiling Only)



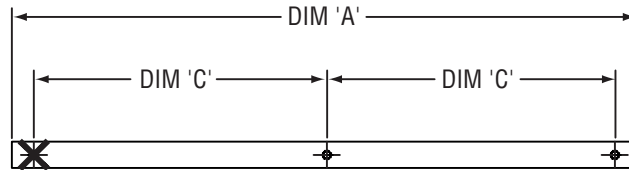
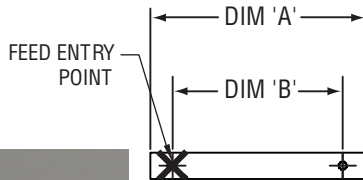
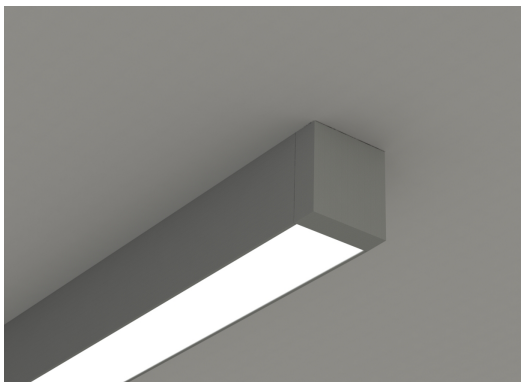
Extruded aluminum 90° mitered corners are available when ceiling mounted patterns are desired. Corners are available in nominal 2' x 2' long continuously lighted configurations.



# Microlinea Ceiling Mount Series 3 - Wet Location - IP54

## Standard Fixture Lengths and Mounting Centers

### Ceiling Mounting



NOM. FIXTURE LENGTH	O.A. FIXTURE LENGTH	MOUNTING CENTERS	MOUNTING CENTERS
	DIM 'A'	DIM 'B'	DIM 'C'
24"	24 13/16"	17 13/16"	-----
36"	36 13/16"	18 13/16"	-----
48"	48 13/16"	30 13/16"	-----
72"	71 5/8"	53 5/8"	-----
96"	95 5/8"	77 5/8"	-----
144"	142 7/16"	-----	62 7/32"

