



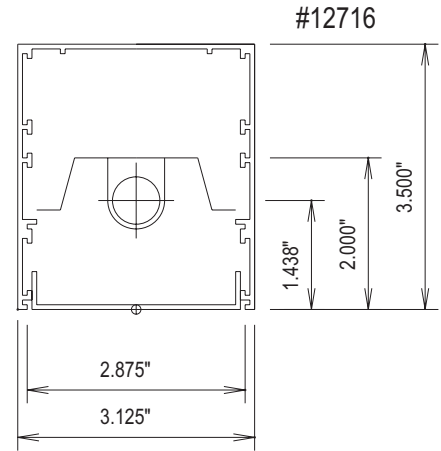
LUMINAIRE TESTING LABORATORY, INC.

SUSTAINING
MEMBER
of the
IESNA

905 Harrison Street · Allentown, PA 18103 · 610-770-1044 · Fax 610-770-8912 · www.LuminaireTesting.com

LTL NUMBER: 12716 DATE: 02-28-2008
 PREPARED FOR: PRECISION ARCHITECTURAL LIGHTING
 CATALOG NUMBER: MLS-D1-4-X-LP-X-120-T5HO
 LUMINAIRE: EXTRUDED ALUMINUM HOUSING, FORMED WHITE ENAMEL ALUMINUM REFLECTOR, CLEAR LINEAR PRISMATIC PLASTIC LENS.
 LAMP: ONE 54 WATT HIGH OUTPUT T5 LINEAR FLUORESCENT LAMP RATED AT 4400 LUMENS.
 LAMP CATALOG NUMBER: PHILIPS F54T5/850/HO/ALTO
 BALLAST: ONE UNIVERSAL LIGHTING TECHNOLOGIES BB254PUNV-D
 MOUNTING: PENDANT

LUMEN TO CANDELA RATIO USED = 9.18
 TOTAL INPUT WATTS = 51.0 AT 120.0 VOLTS
 THE 0 DEGREE PLANE IS PARALLEL WITH THE LAMPS.

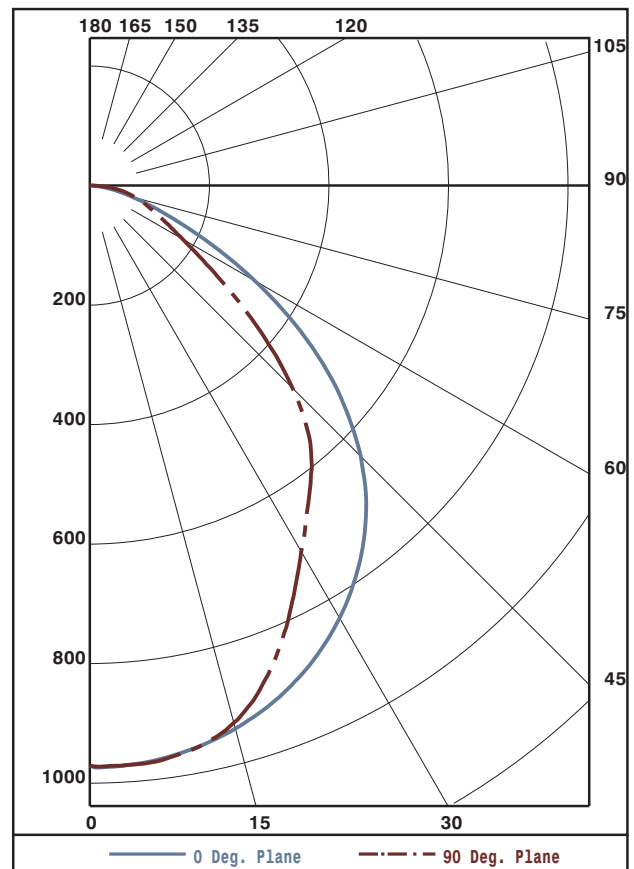


CANDELA DISTRIBUTION						FLUX
0.0	22.5	45.0	67.5	90.0		
0	972	972	972	972	972	
5	971	965	975	970	972	92
15	941	940	944	933	931	265
25	880	869	842	803	790	385
35	782	738	673	643	639	433
45	640	557	517	492	480	409
55	436	369	324	274	254	294
65	208	200	163	140	135	169
75	73	87	86	83	81	89
85	12	25	30	29	28	29
90	0	2	4	5	6	

ZONAL LUMEN SUMMARY			
ZONE	LUMENS	%LAMP	%FIXT
0- 30	742	16.9	34.3
0- 40	1175	26.7	54.3
0- 60	1878	42.7	86.8
0- 90	2164	49.2	100.0
90-180	0	0.0	0.0
0-180	2164	49.2	100.0

TOTAL LUMINAIRE EFFICIENCY: 49.2%
 CIE TYPE: DIRECT
 PLANE: 0-DEG 90-DEG
 SPACING CRITERIA: 1.3 1.1
 LUMINOUS LENGTH: 48.000 2.875

LUMINANCE IN CANDELA PER SQUARE METER			
ANGLE IN DEG	AVERAGE 0-DEG	AVERAGE 45-DEG	AVERAGE 90-DEG
0	10917.	10917.	10917.
45	10165.	8212.	7624.
55	8537.	6344.	4974.
65	5528.	4332.	3588.
75	3168.	3732.	3515.
85	1546.	3866.	3608.



Approved By: MG



LUMINAIRE TESTING LABORATORY, INC.

SUSTAINING MEMBER of the IESNA

905 Harrison Street · Allentown, PA 18103 · 610-770-1044 · Fax 610-770-8912 · www.LuminaireTesting.com

LTL NUMBER: 12716

DATE: 02-28-2008

PREPARED FOR: PRECISION ARCHITECTURAL LIGHTING

COEFFICIENTS OF UTILIZATION - ZONAL CAVITY METHOD
EFFECTIVE FLOOR CAVITY REFLECTANCE 0.20

Table with columns for RC, RW, and various cavity dimensions (80, 70, 50, 30, 10, 0) showing utilization coefficients.

CANDELA DISTRIBUTION

Table showing Candela values for various angles from 0 to 90 degrees.

ZONAL LUMEN SUMMARY

Table showing Zonal Lumen values for various angle ranges from 0-5 to 85-90 degrees.

THIS TEST WAS CONDUCTED USING RELATIVE PHOTOMETRY TECHNIQUES ACCORDING TO STANDARD IESNA PROCEDURES. THE USER MUST THEREFORE USE CAUTION IN THE FOLLOWING SITUATIONS: 1) THIS TEST WAS PERFORMED USING A SPECIFIC BALLAST/LAMP COMBINATION. EXTRAPOLATION OF THESE DATA FOR OTHER BALLAST/LAMP COMBINATIONS MAY PRODUCE ERRONEOUS RESULTS. 2) ACCORDING TO IESNA PROCEDURES, THE BALLAST(S) AND LAMP(S) ARE PRESUMED TO PRODUCE 100% OF RATED OUTPUT. AN APPROPRIATE BALLAST FACTOR MUST BE APPLIED TO THE LUMEN OUTPUT RATINGS AND LUMINOUS INTENSITY VALUES GIVEN. 3) THIS TEST WAS CONDUCTED IN A CONTROLLED LABORATORY ENVIRONMENT WHERE THE AMBIENT TEMPERATURE WAS HELD AT 25°C ±1°C. FIELD PERFORMANCE MAY DIFFER PARTICULARLY IN REGARDS TO CHANGE IN LUMINOUS OUTPUT AS A RESULT OF DIFFERENCE IN AMBIENT TEMPERATURE AND METHOD OF MOUNTING THE LUMINAIRE.