

Microlinea™ Wall Series 3-Fluorescent



SPECIFICATIONS

Housing

One-piece .080" thick extruded aluminum. Die-cast aluminum end caps are secured with no visible fasteners. Standard lengths are 4', 8' and 12'. Provisions may be made for continuous rows of any length.

Finish

Standard and premium finishes are baked powder coat electrostatically applied (2.0 mil minimum thickness) to assure aesthetics and durability.

Indirect Optical Controls

- (OP) Open
- (DC) Clear extruded 100% DR acrylic dust cover

Direct Optical Controls

- (PB) 3/4" deep semi-specular aluminum parabolic baffle with blades on 1 1/2" centers
- (PBW) 3/4" deep white aluminum parabolic baffle with blades on 1 1/2" centers
- (LP) Flush clear extruded 100% DR acrylic linear prismatic lens
- (TWA) Flush translucent white extruded 100% DR acrylic lens
- (FC) Flush frosted clear extruded DR acrylic lens
- (RTWA) Regressed translucent white DR acrylic lens
- (DLP) Directional clear extruded 100% DR acrylic linear prismatic wall wash lens

Reflectors

- Indirect - (Asymmetric) Die-formed from .020" thick high reflectance specular aluminum.
- Indirect - (Symmetric) Die-formed from .020" thick high reflectance specular aluminum.
- Direct - (Asymmetric) Die-formed from .020" thick high reflectance specular aluminum.
- Direct - (Symmetric) Die-formed from .020" thick aluminum and finished with a high reflectance white enamel.

Ballast

Standard ballasts for T5 and T5HO lamps are UL/CUL listed, Class P, HPF, electronic, universal 120/277volt, programmed rapid start with <10% THD.

Circuitry

All fixtures are factory pre-wired for a single circuit. Provision for multiple switching/circuiting is optional.

Wiring

All fixtures intended for continuous rows are provided with factory installed quick-connect wiring.

Controls

Contact factory for control by Occupancy Sensors, Photo Controls and Daylight Harvesting.

Certification

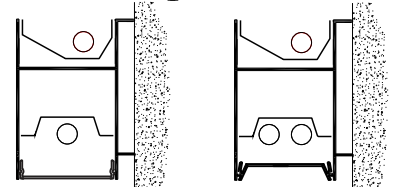
All fixtures are UL/CUL listed for use in 'Dry Applications'. 'Damp Location' is optional.

Catalog Number	Type
Project Name	

MLP3-I1ASY/D1•MLP3-I1ASY/D2 MLP3-I1ASY/D1ASY•MLP3-I2/D1ASY

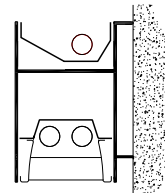
3 1/8" x 5" Indirect/Direct
(T5 and T5HO Lamps)

ADA Compliant

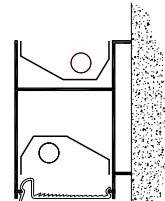


MLP3-I1ASY/D1
T5 or T5HO
Flush Lens Shown

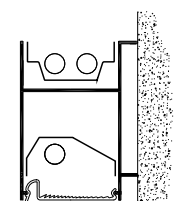
MLP3-I1ASY/D2
T5
Regress Lens Shown



MLP3-I1ASY/D2
T5
Parabolic Baffle Shown

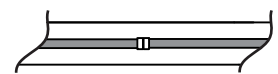


MLP3-I1ASY/D1ASY
T5 or T5HO
Directional Linear
Prismatic Lens Shown

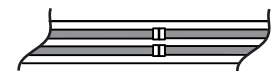


MLP3-I1/D1ASY
T5 or T5HO
Directional Linear
Prismatic Lens Shown

In-Line Lamps:



1 Lamp T5/T5HO



2 Lamp T5/T5HO
(*Note: 2 Lamp T5HO for Indirect Only)

Series MLP3-I1ASY/D1 MLP3-I1ASY/D2 MLP3-I1ASY/D1ASY MLP3-I2/D1ASY	Standard Lengths: 4', 8' and 12'	Mounting W = Wall	Voltage 120 277 347
--	--	-----------------------------	-------------------------------------

MLP3-I1ASY/D2-IL-12-W-DC/PB-F01M-V-T5-[]

Lamp Configuration	Indirect Optical Controls	Direct Optical Controls	Standard Finishes	Lamp Type	Options
IL In-Line Lamps - T5, T5HO	OP Open DC Clear Dust Cover (N/A for T5HO)	PB Semi-Specular Parabolic Baffle PBW White Parabolic Baffle LP Linear Prismatic Lens TWA Translucent White Acrylic Lens	FC Frosted Clear Lens RTWA Regressed Translucent White Acrylic Lens DLP Directional Linear Prismatic WW Lens	T5 T5HO	SS-U/L (Upper/Lower) Lamp Row Switching (Common Neutral) NLCKT Night Light Circuit (Common Neutral) EMCKT Emergency Circuit (Separate Hot & Neutral) EBPL Emergency Battery Pack (635-700 Lumens) EBPH Emergency Battery Pack (975-1325 Lumens)
			F01M Matte White Premium Finishes F01G Gloss White F02 Ivory F03 Stonewash F04 Camel F05 Gray Day F06 Pebble Beach F07 Steel F08 Gray Seal F09 Mocha F10 Bronzed F11 Black F11M Matte Black		Dim Dimming FS Fused Ballasts GTD Generator Transfer Device AO White Acrylic Baffle Overlay DL Damp Location
			F12 Ultrasonic Clear F13 Merlot F14 Red Skies F15 Lemon F16 Forest Hunter F17 Olive F18 Khaki F19 Heather Green F20 Blue Print F21 Reflex Blue F22 Navy FCC Custom Color		

