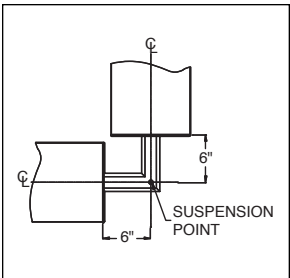


Catalog Number	Type
Project Name	

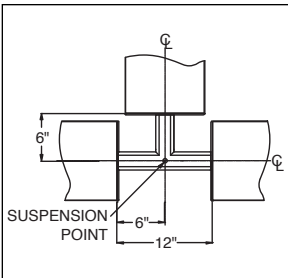
Luminata LED Series

Connector Specifications

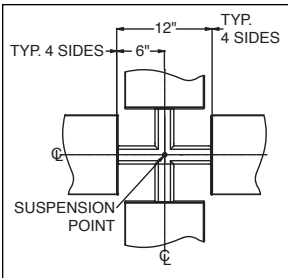
S P E C I F I C A T I O N S



90° Elbow



3-Way "T"



4-Way "X"

Luminta Series 10" x 2 11/16"

Construction One piece .156" thick cast aluminum.

Finish Standard and premium finishes are baked powder coat electrostatically applied (2.0 mil. minimum thickness) to assure aesthetics and durability.

H O W T O O R D E R

Standard Connectors are 2-way 90°, 3-way "T", and 4-way "X".

Catalog Logic
All connectors should be specified and ordered as follows:

*Tbar mounting is not applicable when utilizing Connectors to form patterns.

Sample Catalog Number: **LMS - I** - **L90** - **CN** - **F01M**

LMS - I	-	L90	-	CN	-	F01M
----------------	---	------------	---	-----------	---	-------------

PAL Luminata Suspended Series - (LMS - I)

Connector Type: **L90** = 90 Degree Connector
T = 3-Way Connector **X** = 4-Way Connector

Mounting: **CN** = Cable (Non-Tbar) Fully Adjustable (36" Standard)
P = Rigid Stem Assy (Up to 48" Standard) **K** = Swivel Stem Assy (Up to 48" Standard)

Standard Finish: **F01M** Matte White Premium Finishes:

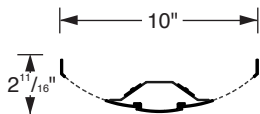
F01G Gloss White	F08 Gray Seal	F14 Red Skies
F02 Ivory	F09 Mocha	F15 Lemon
F03 Stonewash	F10 Bronzed	F16 Forest Hunter
F04 Camel	F11G Gloss Black	F20 Blue Print
F05 Gray Day	F11M Matte Black	F21 Reflex Blue
F06 Pebble Beach	F12 Ultrasonic Clear	F22 Navy
F07 Steel	F13 Merlot	FCC Custom Color

Luminata LED Series

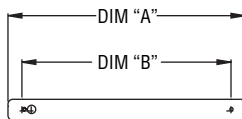
Standard Fixture Lengths and Mounting Centers

Stem & Cable - Indirect Configurations

LED:

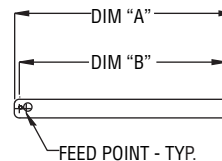


LMS - I - LED



EXTENDED END OPTION

FIXTURE LENGTH DIM. "A"	MOUNTING CENTERS DIM. "B"
36 1/2"	24"
60 1/2"	48"
108 1/2"	96"
156 1/2"	144"



SCULPTED END OPTION

FIXTURE LENGTH DIM. "A"	MOUNTING CENTERS DIM. "B"
24 1/2"	24"
48 1/2"	48"
96 1/2"	96"
144 1/2"	144"

PAL RESERVES THE RIGHT TO CHANGE PRODUCT DESIGN AND SPECIFICATIONS CONTACT FACTORY FOR MOST RECENT PRODUCT INFORMATION.