

Report of Test

LLIA001493-002

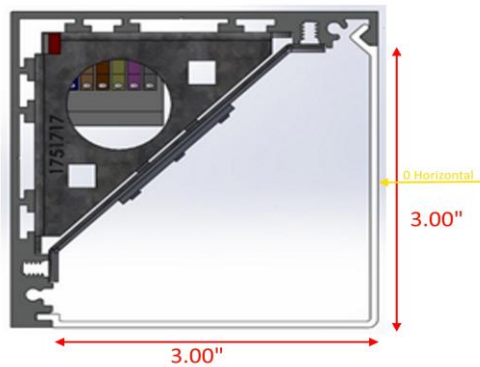
Integrating Sphere Report

Catalog Number: AS350-MO-K40-80-4-XX-LOH-FXXX-UNV-XX

Wall/ceiling mounted extruded aluminum housing, white enamel
aluminum reflector, translucent white plastic enclosure.

144 white LEDs, one Osram PrevaLED Bar board with 144 LEDs.

One Osram Optotronic OTi 30/120-277/1A0 DIM L LED driver programmed to 440mA.



Performance Summary

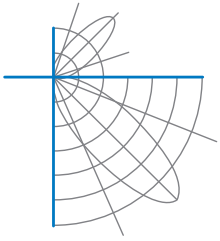
Voltage	277.0 Vac
Current	0.0760 A
Power	18.97 W
Frequency	59.99 Hz
Power Factor	0.902
Current THD	18.6 %
Total Luminous Flux	2234.1 lm
Efficacy	117.8 lm/W
Chromaticity (x,y)	(0.3793, 0.3742)
(u',v')	(0.2254, 0.5003)
Duv	-0.0008
CCT	4013 K
CRI (Ra)	85
R9	19
TM-30: Rf	83
TM-30: Rg	95
TM-30: Rcs,h1	-11

Prepared For:

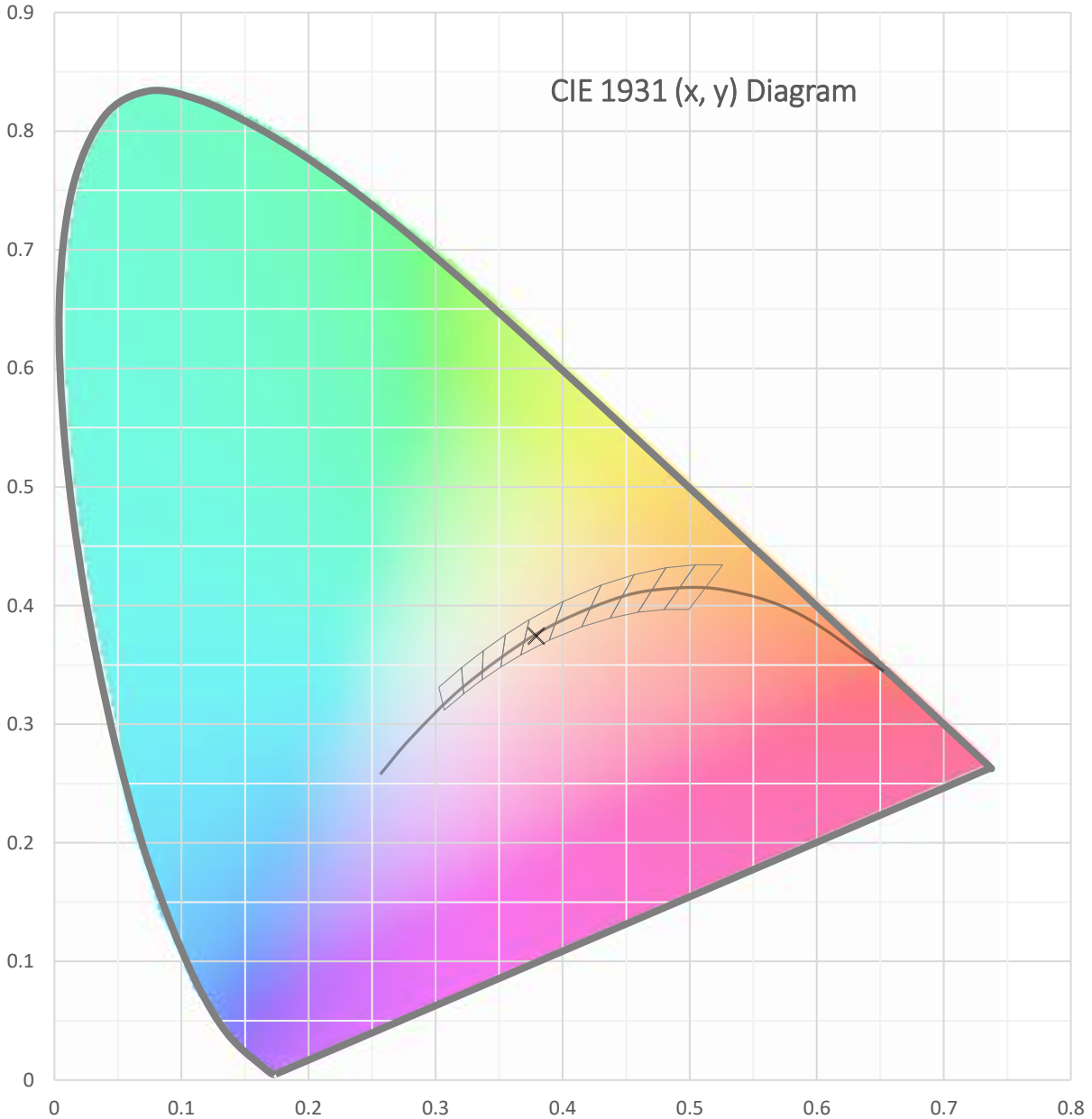
Precision Architectural Lighting
4830 Timber Creek Drive
Houston, TX 77017, USA

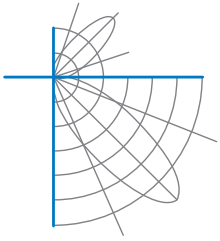
Test date: 07/08/2021
Report date: 07/09/2021

Signed: _____

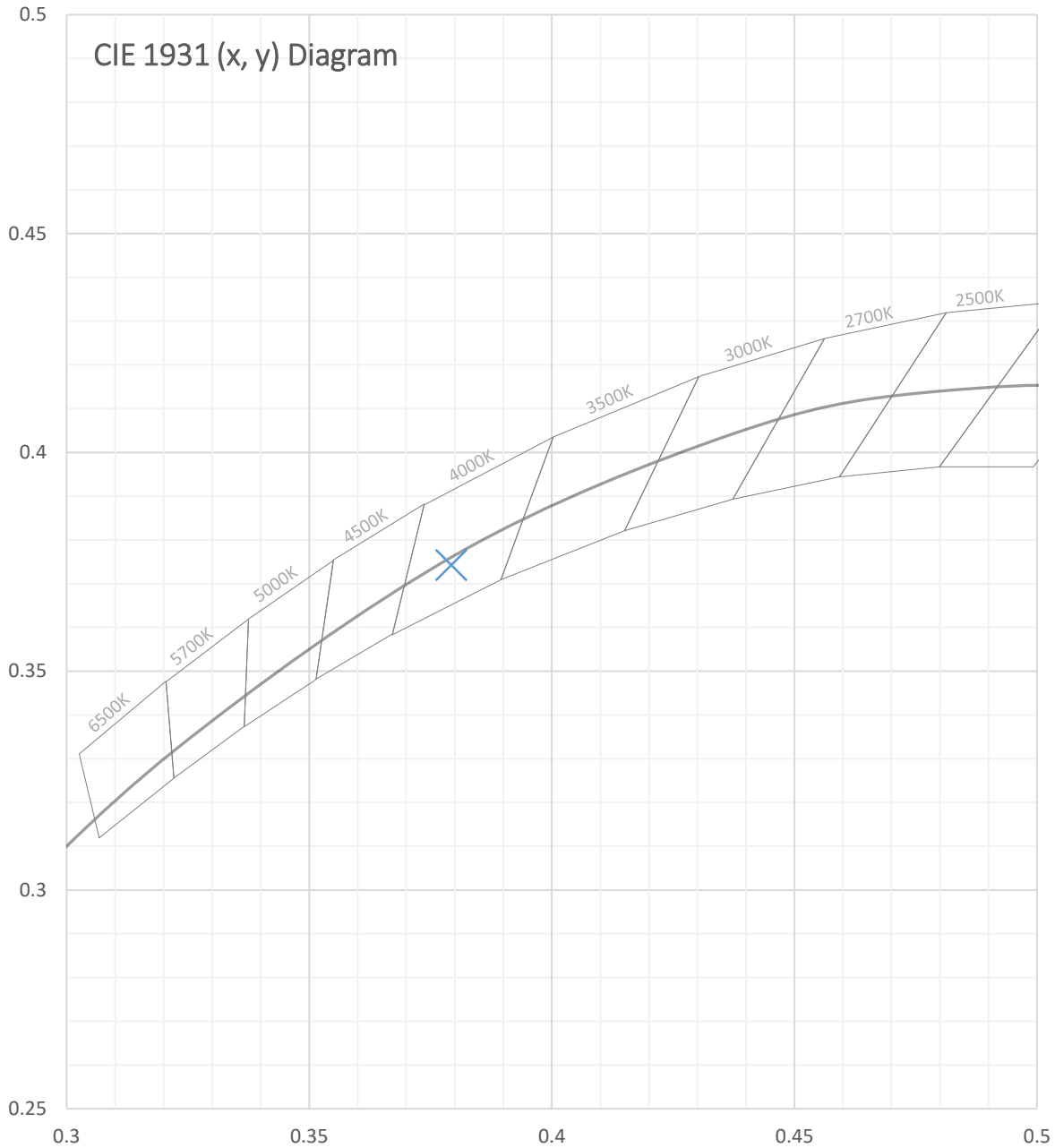


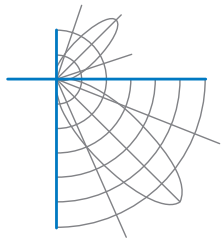
Test Report Number: LLIA001493-002





Test Report Number: LLIA001493-002





Test Report Number: LLIA001493-002

Total Radiant Flux	6.980 W
Total Luminous Flux	2234.1 Lm
Chromaticity CIE 1931 (x, y)	(0.3793, 0.3742)
Chromaticity CIE 1976 (u', v')	(0.2254, 0.5003)
Correlated Color Temperature (CCT)	4013 K
Color Rendering Index (Ra)	85
R1	84
R2	92
R3	96
R4	83
R5	84
R6	88
R7	86
R8	68
R9	19
R10	80
R11	82
R12	62
R13	86
R14	98
TM-30: Rf	83
TM-30: Rg	95
TM-30: Rcs,h1	-11
Distance from Planckian Locus (Duv)	-0.0008
Scotopic/Photopic Ratio ‡	1.729

Electrical Data

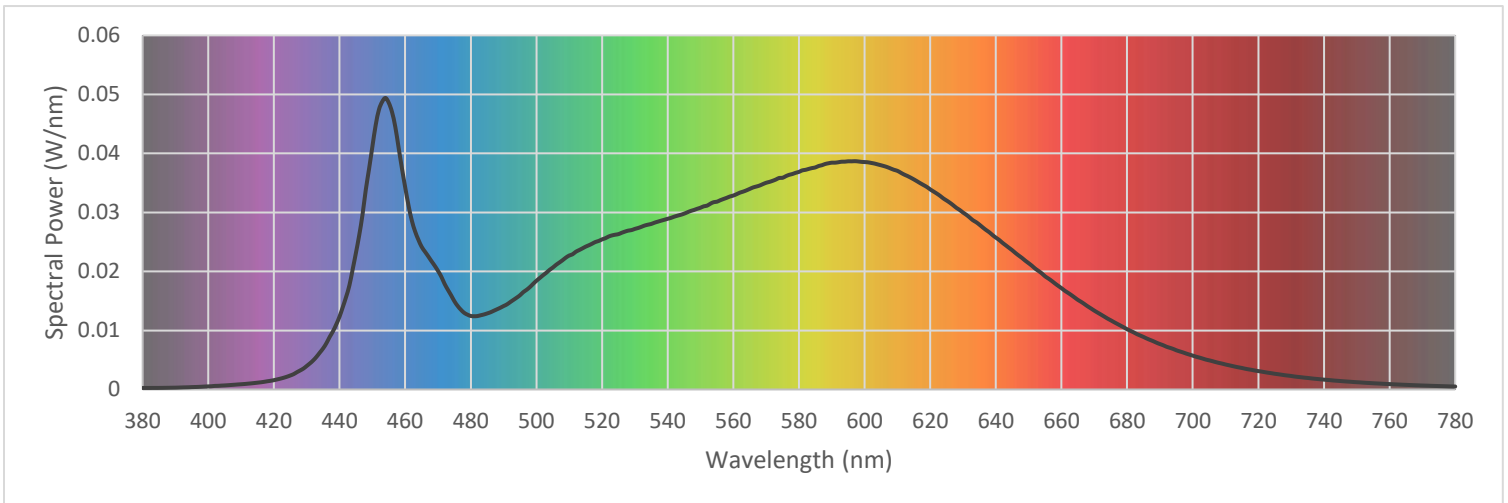
Voltage	277.0 Vac
Current	0.0760 A
Power	18.97 W
Frequency	59.99 Hz
Power Factor	0.902
Current THD	18.6 %

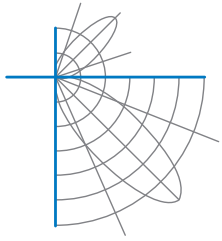


Test Report Number: LLIA001493-002

Summary Spectral Power Distribution (wavelength - nm, spectral power - W/nm)

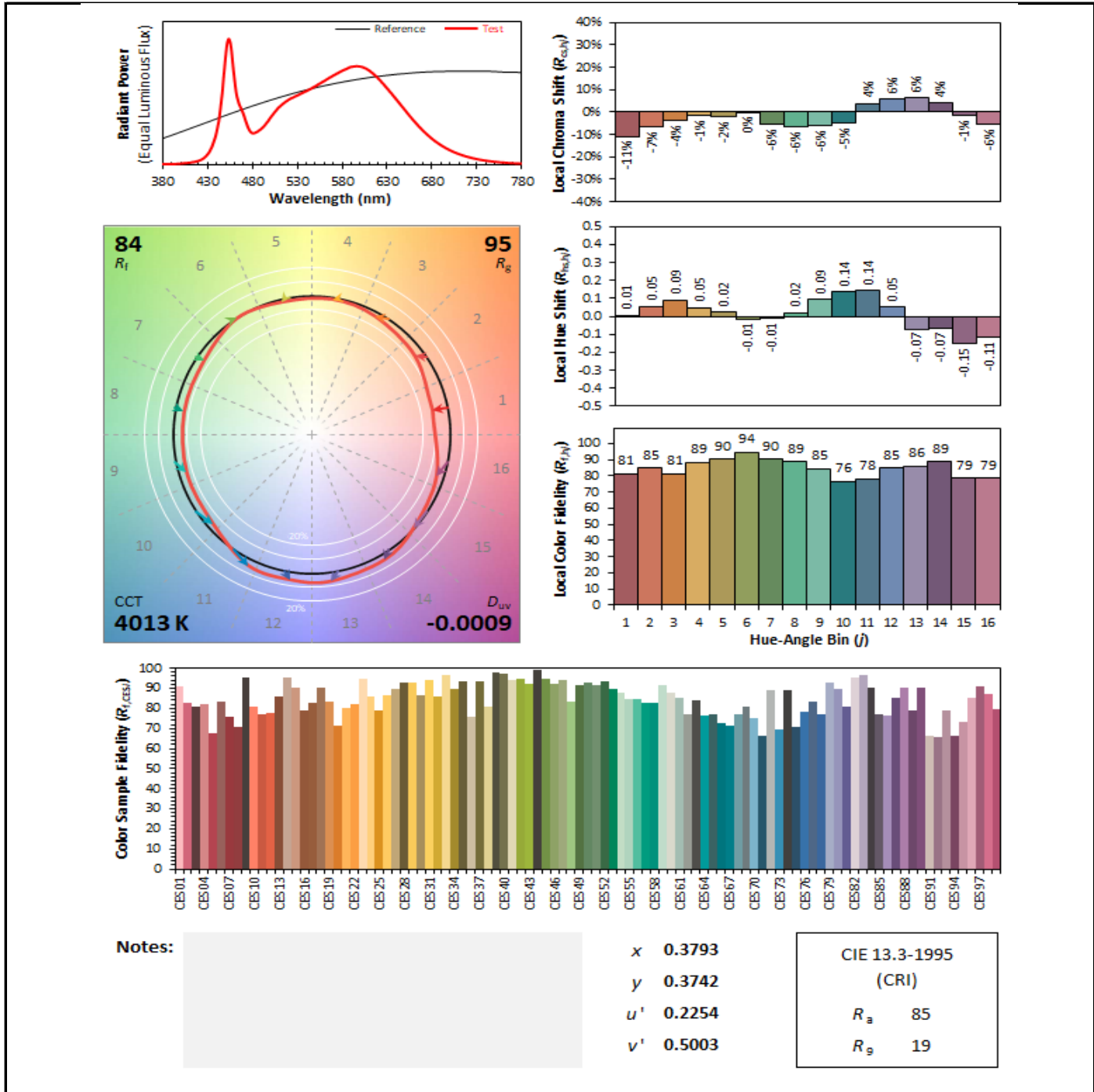
380	0.000256	480	0.012453	580	0.036867	680	0.010212
385	0.000264	485	0.012887	585	0.037624	685	0.008898
390	0.000307	490	0.014135	590	0.038427	690	0.007697
395	0.000399	495	0.015971	595	0.038665	695	0.006641
400	0.000522	500	0.018421	600	0.038530	700	0.005739
405	0.000687	505	0.020662	605	0.037989	705	0.004936
410	0.000884	510	0.022698	610	0.037047	710	0.004233
415	0.001151	515	0.024199	615	0.035598	715	0.003639
420	0.001576	520	0.025434	620	0.033902	720	0.003114
425	0.002371	525	0.026323	625	0.032015	725	0.002661
430	0.003985	530	0.027210	630	0.029981	730	0.002287
435	0.006965	535	0.028051	635	0.027924	735	0.001950
440	0.012366	540	0.028922	640	0.025731	740	0.001667
445	0.023178	545	0.029789	645	0.023591	745	0.001432
450	0.041131	550	0.030797	650	0.021398	750	0.001228
455	0.048574	555	0.031814	655	0.019170	755	0.001054
460	0.034254	560	0.032858	660	0.017170	760	0.000911
465	0.024192	565	0.033985	665	0.015182	765	0.000779
470	0.020090	570	0.035023	670	0.013363	770	0.000671
475	0.014951	575	0.035860	675	0.011729	775	0.000577
						780	0.000502





Test Report Number: LLIA001493-002

IES TM-30 Details

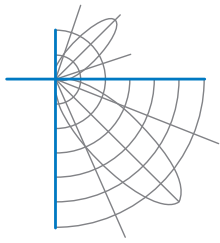




Test Report Number: LLIA001493-002

Additional Pictures of Test Subject





Test Report Number: LLIA001493-002

Test Equipment Configuration: LightLab International Allentown 2m Integrating Sphere
Measurements acquired using a Labsphere CDS 2600 spectroradiometer
Testing was performed using 4π geometry

Test Temperature: 25.1 °C

Test Procedure: Tested in accordance with the applicable sections of:
LM-79-19, LM-78-07, LM-58-13, ANSI_ANSLG C78.377-2017, TM-30-18

Significance: The laboratory has not participated in the selection of samples to be tested.
All testing is performed on the understanding that the significance of the report is limited to the extent that the test sample is representative of production units.

Notes: The measurements and other derived quantities contained in this report are based on the absolute data as measured.

Prorating the performance of the sample for the use of other component combinations (such as lamp / LED / Ballast / driver), or for use in different environmental conditions than that tested, may produce erroneous results.

This report is free of erasures and corrections

This report may contain data that are not covered by the NVLAP accreditation. Quantities marked with ‡ are not covered.

This report must not be used by the customer to claim product certification, approval or endorsement by NVLAP, NIST, or any agency of the Federal Government.