



Precision
Architectural
Lighting

AK 300 LED Series™



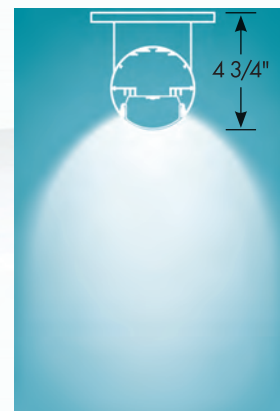


Integrated custom lit corner options include suspended, wall-mount and ceiling-mount (shown above.)

AR300 FOR ELEGANCE

A simple, timeless approach to lighting, the all-new AR300 LED Series is a fresh idea that incorporates both advanced style and advanced function in a compact package.

- At 3-3/8" in diameter, the AR300's slender shape efficiently generates an impressive amount of efficiently produced illumination
- Stylish end cap options include a flat accent end and a unique sculpted end
- Seamless, rigid construction of lightweight extruded aluminum provides lasting beauty and durability
- Fully lit corner options seamlessly connect rows of light that can accommodate virtually any setting

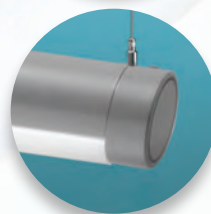




AR300 FOR VERSATILITY

Available in suspended, wall-mount and ceiling-mount configurations, the AR300 series is ideal for a range of refined applications.

- Multiple distribution options include combinations of direct and indirect, and symmetric and asymmetric illumination
- The AR300 provides strong visual appeal in virtually any setting, from health care and financial services operations, to schools, offices and public spaces
- The AR300 is also available with a Tunable White LED, supporting either DALI or DMX protocols with a CCT range from 2700K through 6500K



Sculpted end (a.),
flat accent end (b.)

SYSTEM
SOLUTIONS

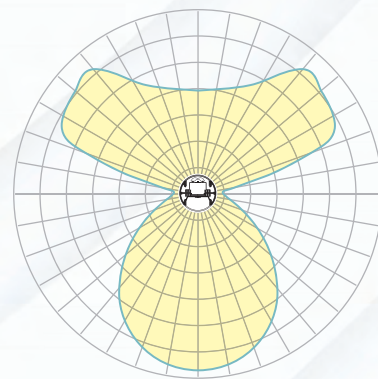
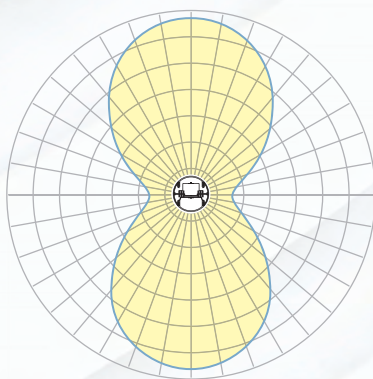
AR300 FOR PERFORMANCE

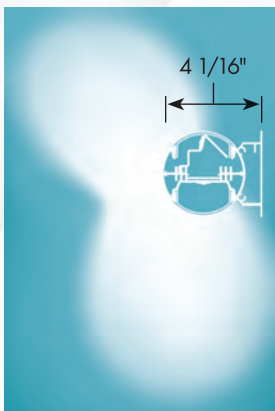
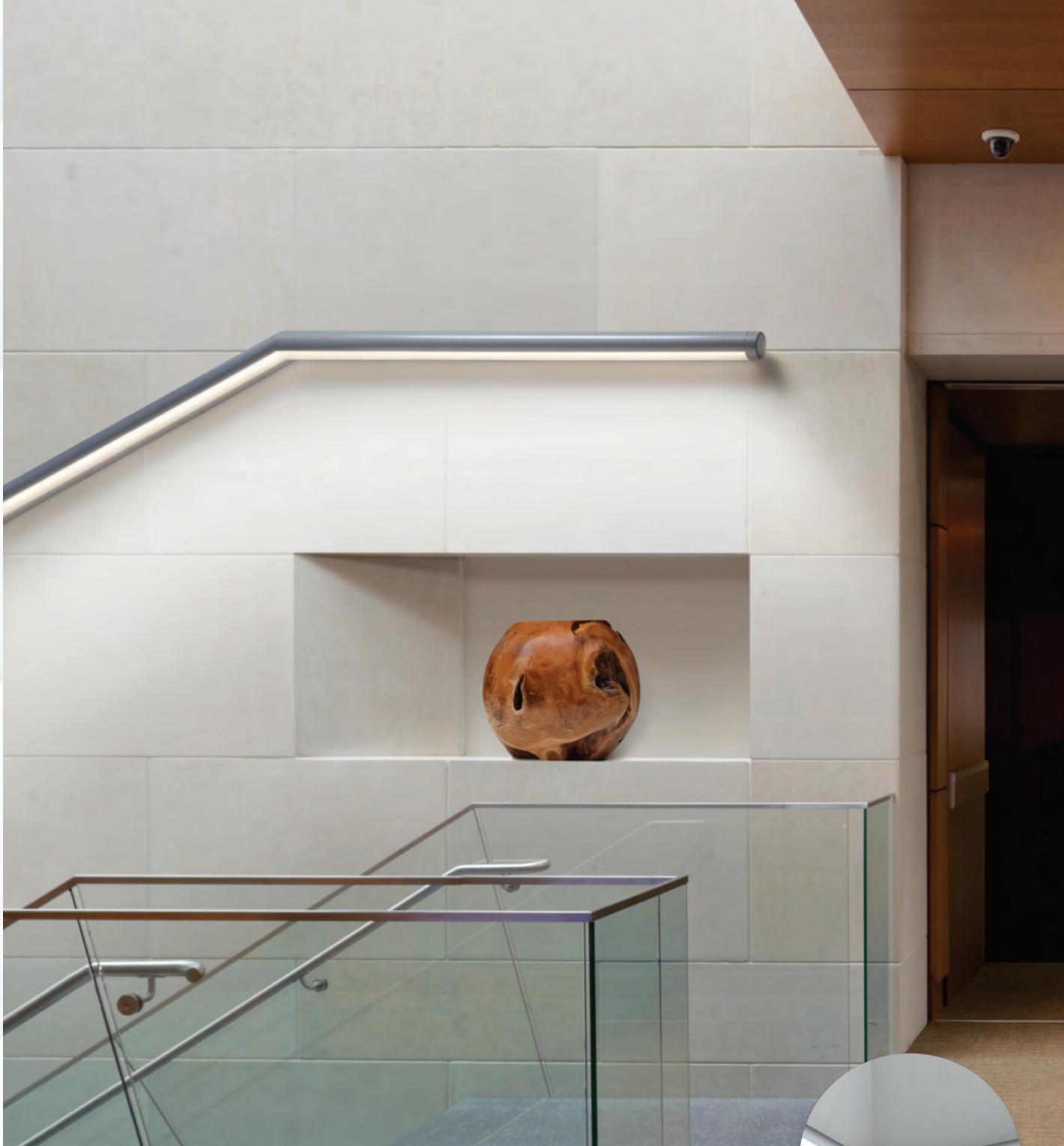
Designed to accommodate integral drivers, the compact, well-engineered AR300 series eliminates the need for remote drivers or battery packs, reducing installation and maintenance costs.



- Available with either an 80- or 90-CRI LED light engine
- Highly efficient, the AR300 series offers efficacies as high as 140 lumens/watt
- Modular mounting points and quick-connect wiring simplify installation on grid ceilings

- Optical controls include an LED-optimized frosted lens for both indirect and direct, or an optional Wide-Spread (WS) optic with clear lens for indirect apertures

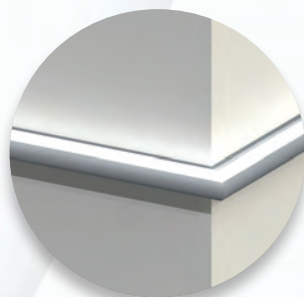
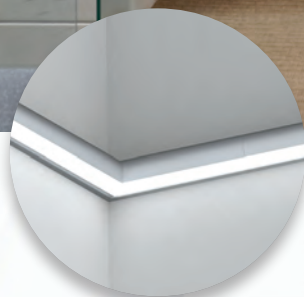




AR300 FOR VISUAL IMPACT

With its trim, stylish housing complemented by either a flat accent end or a graceful, sculpted option, the AR300 brings a fresh appearance to a classic shape.

Lighted inside mitered corner (t.),
lighted outside mitered corner (b.)





**Precision
Architectural
Lighting**

4830 Timber Creek Drive

Houston, TX 77017

P: 713.946.4343

www.pal-lighting.com

A premier manufacturer
of architectural grade
lighting systems,

Precision Architectural

Lighting combines

quality craftsmanship,

outstanding product

performance and

personalized customer

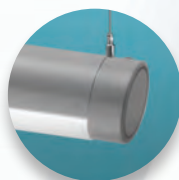
support, partnering with

you to ensure your

complete satisfaction.



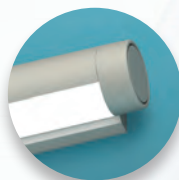
SCULPTED
END



FLAT ACCENT
END



SUSPENDED
MOUNT



WALL
MOUNT



CEILING
MOUNT



AR300 LED SERIES™

SPECIFICATIONS

SERIES

AR300 SERIES – DIRECT
AR300 SERIES – INDIRECT ONLY
AR300 SERIES – INDIRECT ONLY – ASYMMETRIC
AR300 SERIES – INDIRECT/DIRECT
AR300 SERIES – INDIRECT – ASYMMETRIC/DIRECT

AR300-D
AR300-I
AR300-IASY
AR300-I/D
AR300-IASY/D

END CAPS

FLAT END CAP or SCULPTED END CAP

FE or SE

LUMEN OUTPUTS (Total Lumens – Rated per 4' section at 4000K)

DIRECT

High Output: 3679 Lumens or Medium Output: 2503 Lumens

HO or MO

INDIRECT ONLY

High Output (LOH Lens): 3796 Lumens
High Output (WS Optic w/Clear Lens): 3590 Lumens
Medium Output (LOH Lens): 2603 Lumens
Medium Output (WS Optic w/Clear Lens): 2460 Lumens

HO
HO
MO
MO

INDIRECT ONLY ASYMMETRIC

High Output: 3137 Lumens or Medium Output: 2345 Lumens

HO or MO

INDIRECT/DIRECT

High Output – Up & Down (LOH Lens ▲/LOH Lens ▼): 7682 Lumens
High Output – Up & Down (WS Optic ▲/LOH Lens ▼): 7494 Lumens
Med. Output – Up & Down (LOH Lens ▲/LOH Lens ▼): 5057 Lumens
Med. Output – Up & Down (WS Optic ▲/LOH Lens ▼): 4933 Lumens

HO/HO
HO/HO
MO/MO
MO/MO

INDIRECT-ASYMMETRIC/DIRECT

High Output – Up & Down (LOH Lens ▲/LOH Lens ▼): 6775 Lumens
Med. Output – Up & Down (LOH Lens ▲/LOH Lens ▼): 4671 Lumens

HO/HO
MO/MO

CCT

3000 Kelvin, 3500 Kelvin, 4000 Kelvin or
TUNABLE WHITE (2700 Kelvin–6500 Kelvin)

K30, K35, K40 or
TW

CRI

80 (Standard) or 90 (Optional)

80 or 90

STANDARD LENGTHS

4', 8' and 12'

4, 8, or 12

MOUNTING

CABLE (15/16" TBAR) – Fully Adjustable 36" standard
CABLE (NON-TBAR) – Fully Adjustable 36" standard
CEILING MOUNT
WALL MOUNT

CT (length)
CN (length)
J
W

OPTICAL CONTROL

INDIRECT APERTURE

LED Optimized, High Transmittance Acrylic Snap-in Lens
Wide-spread Optic w/Clear Co-extruded Acrylic Snap-in Lens

LOH
WSCL

DIRECT APERTURE

LED Optimized, High Transmittance Acrylic Snap-in Lens

LOH

FINISHES

Standard Finish
MATTE WHITE

F01M

Premium Finishes

GLOSS WHITE	F01M	GRAY SEAL	F08	RED SKIES	F14
IVORY	F02	MOCHA	F09	LEMON	F15
STONWASH	F03	BRONZED	F10	FOREST HUNTER	F16
CAMEL	F04	GLOSS BLACK	F11G	BLUE PRINT	F20
GRAY DAY	F05	MATTE BLACK	F11M	REFLEX BLUE	F21
PEBBLE BEACH	F06	ULTRASONIC CLEAR	F12	NAVY	F22
STEEL	F07	MERLOT	F13	CUSTOM COLOR	FCC

VOLTAGE

120V, 277V, 347V or
UNIVERSAL VOLT

120, 277, 347 or
UNV

OPTIONS

LED ROW SEPARATE SWITCHING (Upper/Lower Common Neutral)
NIGHT-LIGHT CIRCUIT (Common Neutral)
EMERGENCY CIRCUIT (Separate Hot & Neutral)
EMERGENCY BATTERY PACK (6 Watt, Self-Testing)
EMERGENCY BATTERY PACK (10 Watt, Self-Testing)
DALI PROTOCOL DRIVER (Tunable White)
DMX PROTOCOL DRIVER (Tunable White)
DIMMING (0–10V)
100% to 10%, 100% to 1%, 100% to 0%
FUSED DRIVERS
DAMP LOCATION RATED

SS(U/L)
NLCKT
EMCKT
EBPLST
EBPHST
DALI
DMX

DIM10, DIM1, or DIM0
FS
DL