



AR300 SERIES

**PAL**  
ARCHITECTURAL

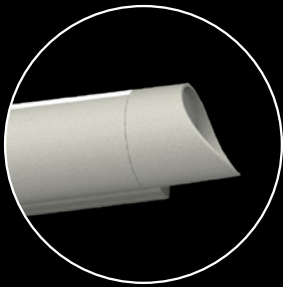
# AR300 FOR *ELEGANCE*

A simple, timeless approach to lighting, the all-new AR300 LED Series is a fresh idea that incorporates both advanced style and advanced function in a compact package. Available in suspended, wall-mount and ceiling-mount configurations, the AR300 series is ideal for a range of refined applications.

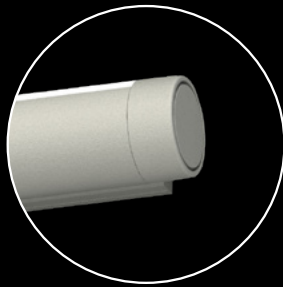
- 3-3/8" diameter light efficiently produces impressive illumination
- Stylish end cap options including flat accent end and sculpted end
- Seamless, rigid, lightweight aluminum construction provides a balance between beauty and durability
- Fully lit corner options seamlessly connect rows of light that can accommodate virtually any setting.
- Multiple distribution options include combinations of direct and indirect, and symmetric and asymmetric illumination
- The AR300 provides strong visual appeal in virtually any setting, from health care and financial services operations, to schools, offices and public spaces
- The AR300 is also available with a Tunable White LED, supporting either DALI or DMX protocols with a CCT range from 2700K through 6500K

Designed to accommodate integral drivers, the compact, well-engineered AR300 series eliminates the need for remote drivers or battery packs, reducing installation and maintenance costs.

With its trim, stylish housing complemented by either a flat accent end or a graceful sculpted option, the AR300 brings a fresh appearance to a classic shape



Sculpted End



Flat Accent End

- Available with either an 80- or 90-CRI LED light engine
- Highly efficient, the AR300 series offers efficacies as high as 140 lumens/watt
- Modular mounting points and quick-connect wiring simplify installation on grid ceilings
- Optical controls include an LED-optimized frosted lens for both indirect and direct, or an optional Wide-Spread (WS) optic with clear lens for indirect apertures



Suspended Mount  
Direct / Indirect



Wall Mount  
Direct



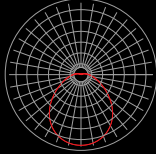
Suspended Mount  
Direct



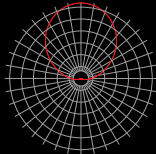
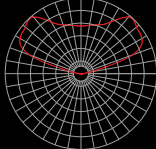
Ceiling Mount  
Direct

# AR300 FOR *VERSATILITY*

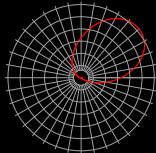
## DIRECT FIXTURE: (Suspended, Wall, or Ceiling Mount)

OUTPUT	LENS	DISTRIBUTION	DELIVERED LUMENS/FT	EFFICACY
High	LOH		920	132 Lm/W
Medium	LOH		626	135 Lm/W

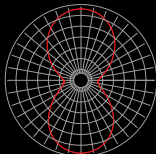
## INDIRECT FIXTURE: (Suspended Mount)

OUTPUT	LENS	DISTRIBUTION	DELIVERED LUMENS/FT	EFFICACY
High	LOH		949	136 Lm/W
Medium	LOH		651	140 Lm/W
High	WSCL - WITH OPTIC		898	136 Lm/W
Medium	WSCL - WITH OPTIC		615	132 Lm/W

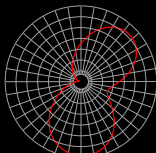
## INDIRECT ASYMMETRIC FIXTURE: (Wall Mount)

OUTPUT	LENS	DISTRIBUTION	DELIVERED LUMENS/FT	EFFICACY
High	LOH		784	133 Lm/W
Medium	LOH		586	115 Lm/W

## INDIRECT/DIRECT FIXTURE: (Suspended Mount)

OUTPUT	LENS UP / LENS DOWN	DISTRIBUTION	DELIVERED LUMENS/FT	EFFICACY
High/High	LOH / LOH		1921	129 Lm/W
Medium/Medium	LOH / LOH		1264	140 Lm/W
High/High	WSCL - WITH OPTIC / LOH		1874	126 Lm/W
Medium/Medium	WSCL - WITH OPTIC / LOH		1233	136 Lm/W

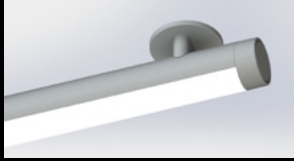
## INDIRECT-ASYMMETRIC/DIRECT FIXTURE: (Wall Mount)

OUTPUT	LENS	DISTRIBUTION	DELIVERED LUMENS/FT	EFFICACY
High/High	LOH / LOH		1694	125 Lm/W
Medium/Medium	LOH / LOH		1168	128 Lm/W

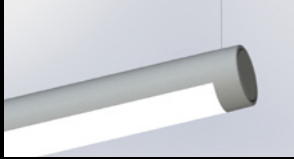
Custom Outputs are Available  
(Contact Factory)

# AR300

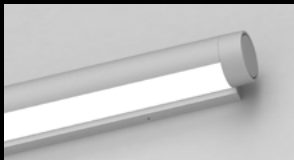
## FLAT ACCENT END



CEILING



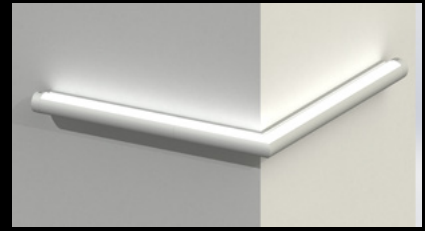
CABLE



WALL

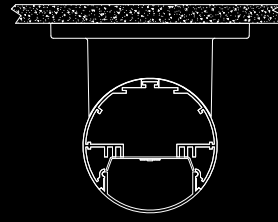


Inside-Miter Lit Corners



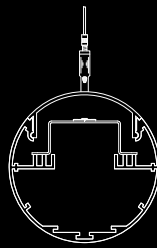
Outside-Miter Lit Corners

## CEILING

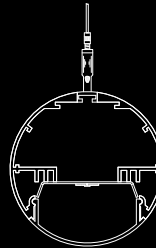


Direct

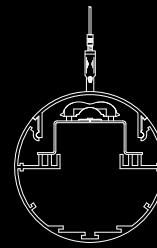
## SUSPENDED



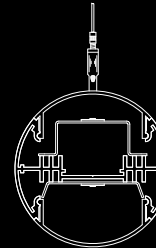
Indirect



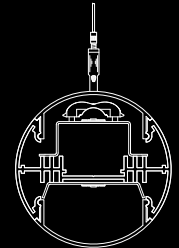
Direct



Indirect - with  
WS Optic

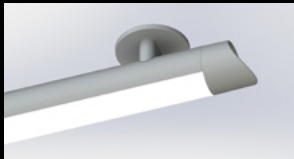


Indirect/Direct

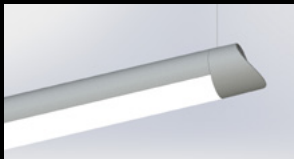


Indirect/Direct with  
WS Optic Up

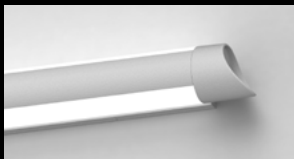
## SCULPTED END



CEILING

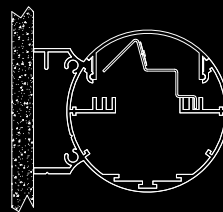


CABLE

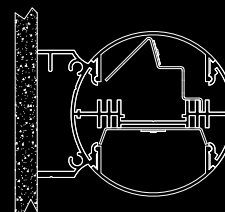


WALL

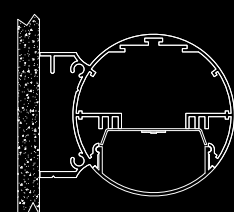
## WALL



Indirect



Indirect/Direct



Direct



4830 Timber Creek Drive,  
Houston, TX 77017  
P: 713.946.4343  
F: 713.946.4441  
www.pal-lighting.com

**PAL**  
ARCHITECTURAL