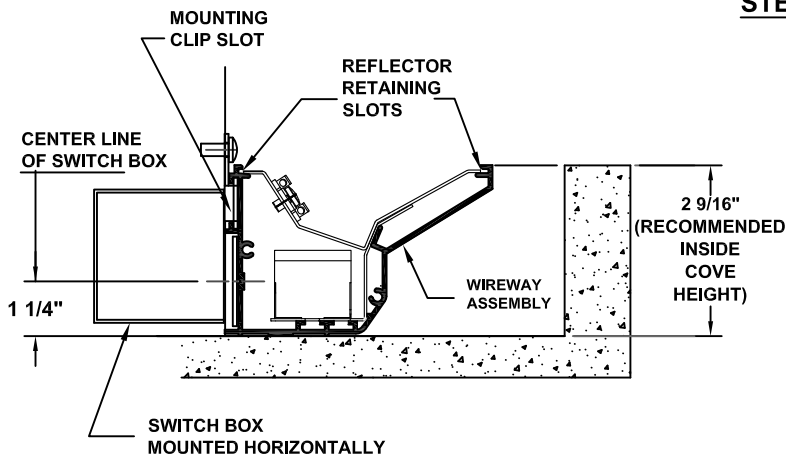


PALADIA BARE COVE LED SERIES SAFETY AND INSTALLATION INSTRUCTIONS

CAUTION:

- * BE CERTAIN THAT POWER TO FIELD WIRING HAS BEEN TURNED OFF PRIOR TO INSTALLATION.
- * CONNECTIONS TO FIELD WIRES AND GROUNDING OF FIXTURES MUST BE DONE IN ACCORDANCE WITH APPLICABLE LOCAL & NATIONAL CODES. INSTALLATION MUST BE PERFORMED BY QUALIFIED PERSONNEL.
- * IT IS INSTALLERS RESPONSIBILITY TO ENSURE THAT WALL, CEILING OR JUNCTION BOX IS STRUCTURALLY CAPABLE OF SUPPORTING WEIGHT OF FIXTURE .
- * BE CERTAIN THAT SUPPLY VOLTAGE IS THE SAME AS THAT MARKED ON DRIVERS AND TRANSFORMERS.

SINGLE FIXTURE INSTALLATION

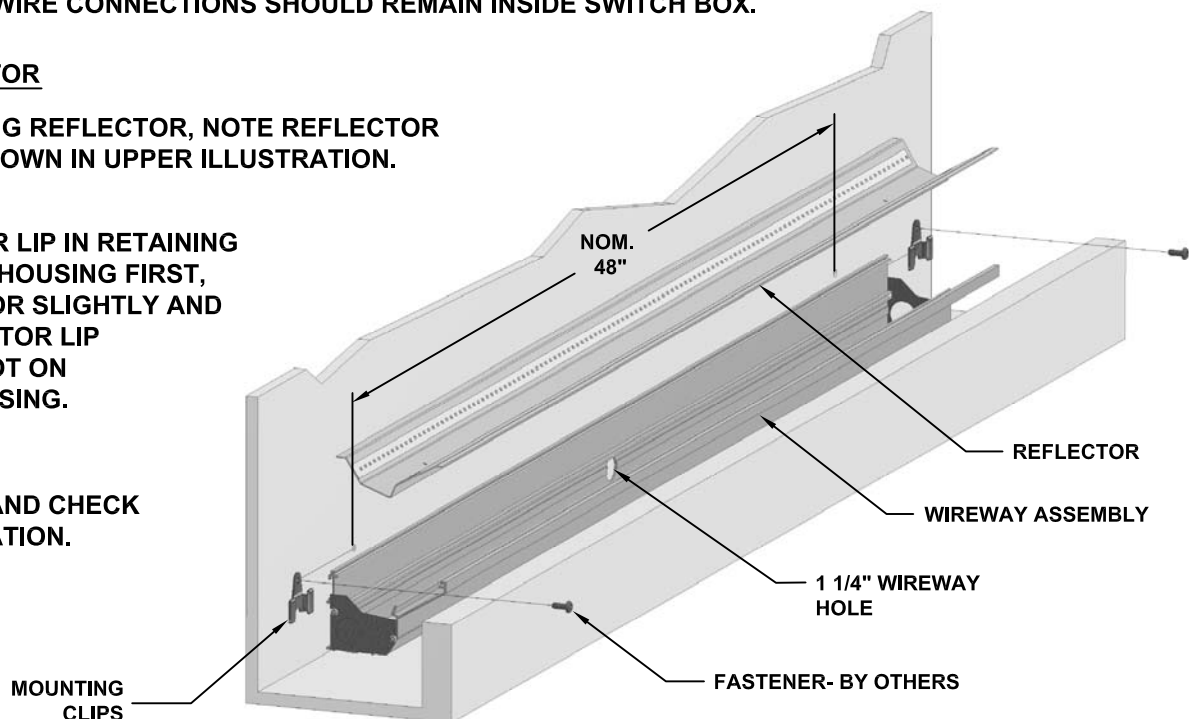


STEP 1: MOUNT FIXTURE WIREWAY ASSEMBLY

- USING WIREWAY ASSEMBLY AS A GUIDE, CENTER THE 1 1/4" WIREWAY HOLE OVER PREVIOUSLY INSTALLED SWITCH BOX.
 - SLIDE MOUNTING CLIPS IN HOUSING GROOVE AS SHOWN, AND MARK MOUNTING HOLES ON WALL. (CLIPS SHOULD BE SPACED APPROX. EVERY 4' O.C.)
 - DRILL HOLES APPROPRIATE FOR MOUNTING SURFACE AND FASTENERS TO BE USED (#10 SCREWS RECOMMENDED). FACTORY DRILLED HOLES ARE ALSO LOCATED IN BOTTOM OF WIREWAY ASSEMBLY TO PROVIDE AN ALTERNATE MOUNTING METHOD, IF REQUIRED.
 - SECURE WIREWAY ASSEMBLY TO WALL OR COVE BASE WITH APPROPRIATE FASTENERS. (BY OTHERS)
- JOIN SUPPLY WIRES TO WIREWAY ASSEMBLY LEADS USING 90°C MINIMUM RATED WIRES AND CONNECTORS. ALL WIRE CONNECTIONS SHOULD REMAIN INSIDE SWITCH BOX.

STEP 2 : INSTALL REFLECTOR

- PRIOR TO INSTALLING REFLECTOR, NOTE REFLECTOR ORIENTATION AS SHOWN IN UPPER ILLUSTRATION.
- INSTALL REFLECTOR LIP IN RETAINING SLOT ON FRONT OF HOUSING FIRST, SQUEEZE REFLECTOR SLIGHTLY AND SNAP REAR REFLECTOR LIP INTO RETAINING SLOT ON BACK WALL OF HOUSING.
- ENERGIZE CIRCUIT AND CHECK FOR PROPER OPERATION.



REFERENCE BACK PAGE FOR CONTINUOUS ROW INSTALLATION



PALADIA BARE COVE LED SERIES SAFETY AND INSTALLATION INSTRUCTIONS

ROW INSTALLATION

STEP 1: INSTALL WIREWAY ASSEMBLIES

- INSTALL FIRST WIREWAY ASSEMBLY AS OUTLINED IN STEP 1 ON REVERSE.
- INSTALL REMAINING FIXTURE WIREWAYS IN A SIMILAR FASHION, BUTTING THEM END-END UNTIL DESIRED ROW LENGTH IS ACHIEVED.

CAUTION: ALIGN WIREWAYS ACCURATELY AT BUTT JOINT TO INSURE PROPER FIT.

- JOIN PRE-WIRED QUICK CONNECTS BETWEEN EACH WIREWAY HOUSING, ROUTING LEADS NEAR BOTTOM OF WIREWAY.

STEP 2: COMPLETE INSTALLATION

- INSTALL REFLECTORS AS OUTLINED ON PREVIOUS PAGE.
- ENERGIZE CIRCUIT AND CHECK FOR PROPER OPERATION.

