

Microlinea Series™

| | |
|----------------|------|
| Catalog Number | Type |
| Project Name | |

Shown with Linear Prismatic Lens



Shown with White Parabolic Baffle

MLP-I1/D1

3 1/8" x 5" Indirect/Direct (T8, T5 or T5HO Lamps)

ADA Compliant

S P E C I F I C A T I O N S

Housing

One-piece .080" thick extruded aluminum. Die-cast aluminum end caps are secured with no visible fasteners. Standard lengths are 4', 8' and 12'. Provisions may be made for continuous rows of any length.

Finish

Standard and premium finishes are baked powder coat electrostatically applied (2.0 mil minimum thickness) to assure aesthetics and durability.

Indirect Optical Controls

- (OP) Open
- (DC) Clear extruded 100% DR acrylic dust cover

Direct Optical Controls

- (PB) 3/4" deep semi-specular aluminum parabolic baffle with blades on 1 1/2" centers
- (PBW) 3/4" deep white aluminum parabolic baffle with blades on 1 1/2" centers
- (LP) Clear extruded 100% DR acrylic linear prismatic lens
- (DLP) Directional clear extruded 100% DR acrylic linear prismatic wall wash lens
- (TWA) Translucent white extruded 100% DR acrylic lens

Reflectors

- Indirect - Die-formed from .020" thick high reflectance specular aluminum.
- Direct - For PB, PBW, LP and TWA Optical Controls - Die-formed from .020" thick aluminum and finished with a high reflectance white enamel.
- Direct - For DLP Optical Control - Die-formed from .020" thick high reflectance specular aluminum.

Ballast

- Standard ballasts for T5 and T5HO lamps are UL/CUL listed, Class P, HPF, electronic, universal 120/277volt, programmed rapid start with <10% THD.
- Standard ballasts for T8 lamps are UL/CUL listed, Class P, HPF, electronic, universal 120/277volt, instant start with <10% THD.

Circuitry

All fixtures are factory pre-wired for a single circuit. Provision for multiple switching/circuiting is optional.

Wiring

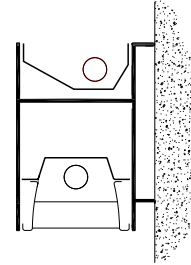
All fixtures intended for continuous rows are provided with factory installed quick-connect wiring.

Controls

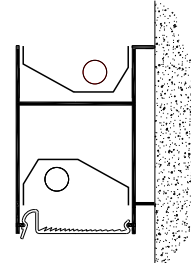
Contact factory for control by Occupancy Sensors, Photo Controls and Daylight Harvesting.

Certification

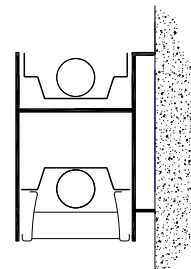
All fixtures are UL/CUL listed for use in 'Dry Applications'. 'Damp Location' is optional.



MLP-I1/D1
T5 or T5HO



MLP-I1/D1-DLP
T5 or T5HO



MLP-I1/D1
T8

Standard Lengths: 4', 8' and 12'

Mounting: W = Wall

Series: MLP-I1/D1

MLP-I1/D1-12-W-DC/PB-F01M-V-T5HO-[]

Indirect Optical Controls

- OP Open
- DC Clear Dust Cover

Direct Optical Controls

- PB Semi-Specular Parabolic Baffle
- PBW White Parabolic Baffle
- LP Linear Prismatic Lens
- DLP Directional Linear Prismatic WW Lens (N/A for T8 Lamps)
- TWA Translucent White Acrylic Lens

Standard Finishes

- F01M Matte White
- F01G Gloss White
- Premium Finishes**
- F02 Ivory
- F03 Stonewash
- F04 Camel
- F05 Gray Day
- F06 Pebble Beach
- F07 Steel
- F08 Gray Seal
- F09 Mocha
- F10 Bronzed
- F11 Black
- F12 Ultrasonic Clear
- F13 Merlot
- F14 Red Skies
- F15 Lemon
- F16 Forest Hunter
- F17 Olive
- F18 Khaki
- F19 Heather Green
- F20 Blue Print
- F21 Reflex Blue
- F22 Navy
- FCC Custom Color

Voltage

- 120
- 277
- 347

Lamp Type

- T5
- T5HO
- T8

Options

- SS-U/L (Upper/Lower) Lamp Row Switching (Common Neutral Utilized)
- NLCKT Separate Night Light Circuit
- EMCKT Separate Emergency Circuit
- EBPL Emergency Battery Pack (635-700 Lumens)
- EBPH Emergency Battery Pack (975-1325 Lumens)
- Dim Dimming
- FS Fused Ballasts
- GTD Generator Transfer Device
- AO White Acrylic Baffle Overlay (N/A for T8) (N/A with DLP)

To view Wood Grain, Marble and Granite Finishes on our Website see "Products"/"Specialty Finishes".



MLP-I1/D1

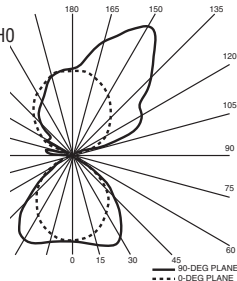
Indirect/Direct - T5HO Lamps Semi-Specular Aluminum Parabolic Baffle

Catalog Number: MLP-I1/D1-4-W-OP/PB-F01M-120-T5HO
Report Number: LTL#13054.ies

Luminaire Description: Extruded Aluminum Housing with Specular Aluminum Reflector Up and White Aluminum Reflector Down and Semi-Specular Parabolic Baffle and Open Top

Lamps: Two Philips F54T5/850/HO/ALTO
Rated at 4400 Lumens Each

Total Luminaire Efficiency = 66.0%
61% Up 39% Down



CANDELA DISTRIBUTION LUMENS

| | 0.0 | 22.5 | 45.0 | 67.5 | 90.0 | 112.5 | 135.0 | 157.5 | 180.0 |
|-----|------|------|------|------|------|-------|-------|-------|-------|
| 0 | 960 | 960 | 960 | 960 | 960 | 960 | 960 | 960 | 960 |
| 5 | 973 | 967 | 968 | 959 | 956 | 953 | 960 | 957 | 960 |
| 15 | 1038 | 1017 | 976 | 927 | 906 | 913 | 950 | 981 | 997 |
| 25 | 1089 | 1055 | 979 | 873 | 822 | 850 | 948 | 1034 | 1071 |
| 35 | 961 | 939 | 904 | 796 | 708 | 771 | 904 | 979 | 1010 |
| 45 | 581 | 613 | 673 | 660 | 561 | 655 | 722 | 712 | 714 |
| 55 | 196 | 227 | 311 | 408 | 365 | 426 | 381 | 302 | 283 |
| 65 | 47 | 60 | 70 | 89 | 94 | 98 | 93 | 75 | 64 |
| 75 | 14 | 14 | 14 | 20 | 23 | 21 | 17 | 19 | 19 |
| 85 | 2 | 2 | 2 | 2 | 2 | 2 | 3 | 4 | 4 |
| 90 | 0 | 0 | 0 | 0 | 0 | 0 | 0 | 0 | 0 |
| 95 | 29 | 30 | 48 | 97 | 31 | 62 | 114 | 101 | 125 |
| 105 | 437 | 490 | 486 | 342 | 153 | 100 | 56 | 192 | 231 |
| 115 | 858 | 816 | 656 | 686 | 314 | 275 | 224 | 171 | 141 |
| 125 | 920 | 925 | 993 | 973 | 478 | 409 | 389 | 269 | 297 |
| 135 | 1269 | 1276 | 1373 | 1041 | 625 | 589 | 546 | 529 | 527 |
| 145 | 1644 | 1633 | 1433 | 1071 | 749 | 732 | 649 | 648 | 662 |
| 155 | 1594 | 1503 | 1318 | 1039 | 848 | 852 | 852 | 766 | 763 |
| 165 | 1332 | 1261 | 1147 | 997 | 921 | 943 | 924 | 907 | 908 |
| 175 | 1035 | 1013 | 1002 | 974 | 962 | 959 | 979 | 981 | 983 |
| 180 | 967 | 967 | 967 | 967 | 967 | 967 | 967 | 967 | 967 |

MLP-I1/D1

Indirect/Direct - T8 Lamps

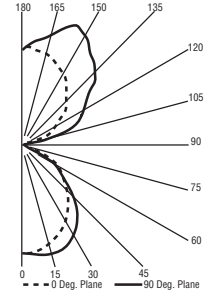
Semi-Specular Aluminum Parabolic Baffle

Catalog Number: MLP-I1/D1-4-W-OP/PB-F01M-120-T8
Report Number: LTL#13051.ies

Luminaire Description: Extruded Aluminum Housing with Specular Aluminum Reflector Up and White Aluminum Reflector Down and Semi-Specular Parabolic Baffle and Open Top

Lamps: Two Philips F32T8/835/ALTO
Rated at 2850 Lumens Each

Total Luminaire Efficiency = 68.8%
62% Up 38% Down



CANDELA DISTRIBUTION LUMENS

| | 0.0 | 22.5 | 45.0 | 67.5 | 90.0 |
|-----|-----|------|------|------|------|
| 0 | 653 | 653 | 653 | 653 | 653 |
| 5 | 648 | 648 | 655 | 654 | 657 |
| 15 | 613 | 622 | 646 | 666 | 675 |
| 25 | 556 | 576 | 620 | 648 | 660 |
| 35 | 480 | 513 | 544 | 552 | 568 |
| 45 | 384 | 415 | 417 | 425 | 443 |
| 55 | 256 | 266 | 259 | 260 | 270 |
| 65 | 74 | 74 | 78 | 68 | 56 |
| 75 | 18 | 15 | 13 | 13 | 13 |
| 85 | 2 | 1 | 1 | 1 | 2 |
| 90 | 0 | 0 | 0 | 0 | 0 |
| 95 | 24 | 55 | 51 | 42 | 38 |
| 105 | 112 | 184 | 243 | 245 | 242 |
| 115 | 209 | 327 | 341 | 378 | 397 |
| 125 | 303 | 471 | 489 | 493 | 490 |
| 135 | 388 | 555 | 602 | 615 | 620 |
| 145 | 460 | 571 | 711 | 717 | 712 |
| 155 | 518 | 583 | 691 | 772 | 788 |
| 165 | 558 | 588 | 635 | 670 | 685 |
| 175 | 579 | 577 | 591 | 597 | 598 |
| 180 | 572 | 572 | 572 | 572 | 572 |

MLP-I1/D1

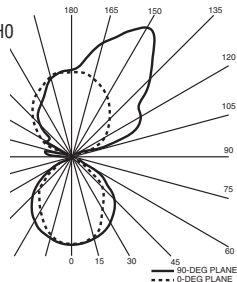
Indirect/Direct - T5HO Lamps Linear Prismatic Acrylic Lens

Catalog Number: MLP-I1/D1-4-W-OP/LP-F01M-120-T5HO
Report Number: LTL#13052.ies

Luminaire Description: Extruded Aluminum Housing with Specular Aluminum Reflector Up and White Aluminum Reflector Down and Linear Prismatic Acrylic Lens and Open Top

Lamps: Two Philips F54T5/850/HO/ALTO
Rated at 4400 Lumens Each

Total Luminaire Efficiency = 64.6%
63% Up 37% Down



CANDELA DISTRIBUTION LUMENS

| | 0.0 | 22.5 | 45.0 | 67.5 | 90.0 | 112.5 | 135.0 | 157.5 | 180.0 |
|-----|------|------|------|------|------|-------|-------|-------|-------|
| 0 | 971 | 971 | 971 | 971 | 971 | 971 | 971 | 971 | 971 |
| 5 | 970 | 969 | 974 | 963 | 971 | 968 | 976 | 971 | 973 |
| 15 | 938 | 939 | 945 | 940 | 941 | 940 | 942 | 928 | 924 |
| 25 | 801 | 811 | 850 | 873 | 880 | 866 | 834 | 794 | 780 |
| 35 | 640 | 645 | 682 | 747 | 782 | 730 | 664 | 640 | 638 |
| 45 | 484 | 494 | 518 | 566 | 640 | 547 | 516 | 490 | 475 |
| 55 | 261 | 281 | 330 | 376 | 436 | 362 | 318 | 267 | 247 |
| 65 | 138 | 0 | 167 | 205 | 208 | 195 | 159 | 137 | 132 |
| 75 | 82 | 1 | 88 | 90 | 73 | 84 | 84 | 81 | 79 |
| 85 | 32 | 0 | 34 | 28 | 12 | 21 | 26 | 24 | 24 |
| 90 | 7 | 7 | 6 | 4 | 0 | 0 | 2 | 4 | 4 |
| 95 | 29 | 30 | 48 | 97 | 31 | 62 | 114 | 101 | 125 |
| 105 | 437 | 490 | 486 | 342 | 153 | 100 | 56 | 192 | 231 |
| 115 | 858 | 816 | 656 | 686 | 314 | 275 | 224 | 171 | 141 |
| 125 | 920 | 925 | 993 | 973 | 478 | 409 | 389 | 269 | 297 |
| 135 | 1269 | 1276 | 1373 | 1041 | 625 | 589 | 546 | 529 | 527 |
| 145 | 1644 | 1633 | 1433 | 1071 | 749 | 732 | 649 | 648 | 662 |
| 155 | 1594 | 1503 | 1318 | 1039 | 848 | 852 | 852 | 766 | 763 |
| 165 | 1332 | 1261 | 1147 | 997 | 921 | 943 | 924 | 907 | 908 |
| 175 | 1035 | 1013 | 1002 | 974 | 962 | 959 | 979 | 981 | 983 |
| 180 | 967 | 967 | 967 | 967 | 967 | 967 | 967 | 967 | 967 |

MLP-I1/D1

Indirect/Direct - T5HO Lamps

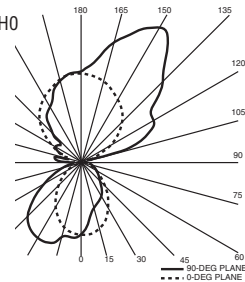
Wall Wash Lens

Catalog Number: MLP-I1/D1-4-W-OP/DLP-F01M-120-T5HO
Report Number: LTL#13058.ies

Luminaire Description: Extruded Aluminum Housing with Specular Aluminum Reflector Up and Down and Directional Linear Prismatic Acrylic Lens and Open Top

Lamps: Two Philips F54T5/850/HO/ALTO
Rated at 4400 Lumens Each

Total Luminaire Efficiency = 64.3%
63% Up 37% Down



CANDELA DISTRIBUTION LUMENS

| | 0.0 | 22.5 | 45.0 | 67.5 | 90.0 | 112.5 | 135.0 | 157.5 | 180.0 |
|-----|------|------|------|------|------|-------|-------|-------|-------|
| 0 | 789 | 789 | 789 | 789 | 789 | 789 | 789 | 789 | 789 |
| 5 | 700 | 705 | 729 | 756 | 788 | 810 | 826 | 828 | 828 |
| 15 | 534 | 537 | 576 | 655 | 740 | 803 | 817 | 863 | 871 |
| 25 | 477 | 474 | 482 | 515 | 643 | 743 | 872 | 930 | 948 |
| 35 | 404 | 405 | 428 | 403 | 508 | 681 | 842 | 925 | 934 |
| 45 | 292 | 296 | 326 | 348 | 358 | 605 | 771 | 834 | 835 |
| 55 | 224 | 215 | 217 | 252 | 227 | 491 | 629 | 635 | 606 |
| 65 | 162 | 152 | 143 | 143 | 136 | 347 | 419 | 384 | 360 |
| 75 | 94 | 84 | 76 | 65 | 60 | 170 | 196 | 179 | 164 |
| 85 | 26 | 22 | 18 | 12 | 10 | 31 | 36 | 34 | 26 |
| 90 | 11 | 8 | 5 | 2 | 1 | 2 | 2 | 2 | 1 |
| 95 | 29 | 30 | 48 | 97 | 31 | 62 | 114 | 101 | 125 |
| 105 | 437 | 490 | 486 | 342 | 153 | 100 | 56 | 192 | 231 |
| 115 | 858 | 816 | 656 | 686 | 314 | 275 | 224 | 171 | 141 |
| 125 | 920 | 925 | 993 | 973 | 478 | 409 | 389 | 269 | 297 |
| 135 | 1269 | 1276 | 1373 | 1041 | 625 | 589 | 546 | 529 | 527 |
| 145 | 1644 | 1633 | 1433 | 1071 | 749 | 732 | 649 | 648 | 662 |
| 155 | 1594 | 1503 | 1318 | 1039 | 848 | 852 | 852 | 766 | 763 |
| 165 | 1332 | 1261 | 1147 | 997 | 921 | 943 | 924 | 907 | 908 |
| 175 | 1035 | 1013 | 1002 | 974 | 962 | 959 | 979 | 981 | 983 |
| 180 | 967 | 967 | 967 | 967 | 967 | 967 | 967 | 967 | 967 |

Note: See Website for additional Photometric Reports.

