

# Delgada Series™

Catalog Number	Type
Project Name	

Shown with 4 1/2" Extended End and Round Perf Lens



Shown with Flat End and Semi-Specular Parabolic Baffle

## DCP01

8 1/8" x 2" Indirect/Direct (T8 Lamps)

### S P E C I F I C A T I O N S

#### Housing

Two-piece .080" thick extruded aluminum. Standard lengths are 4' and 8'. Provisions may be made for continuous rows of any length.

#### End Caps

- (FE) Flat End – .100" thick die-cast aluminum finished to match fixture housing and secured with no visible fasteners
- (XE) 4 1/2" Extended End – .100" thick die-cast aluminum finished to match fixture housing and secured with no visible fasteners

#### Finish

Standard and premium finishes are baked powder coat electrostatically applied (2.0 mil minimum thickness) to assure aesthetics and durability.

#### Direct Optical Controls

- (PB) 3/4" deep semi-specular aluminum parabolic baffle with blades on 1 1/2" centers
- (PBW) 3/4" deep white aluminum parabolic baffle with blades on 1 1/2" centers
- (RDPL) .118" thick acrylic optical panel with .080" round openings on .110 centers (50% open area)
- (SQPL) .118" thick acrylic optical panel with .080" square openings on .110 centers (50% open area)

#### Reflectors

Die-formed from .020" thick high reflectance specular aluminum.

#### Ballast

Standard ballasts for T8 lamps are UL/CUL listed, Class P, HPF electronic, universal 120/277volt, instant start with <10% THD.

#### Circuitry

All fixtures are factory pre-wired for a single circuit. Provision for multiple switching/circuiting is optional.

#### Wiring

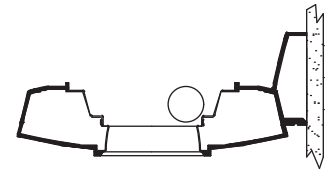
All fixtures intended for continuous rows are provided with factory installed quick-connect wiring.

#### Controls

Contact factory for control by Occupancy Sensors, Photo Controls and Daylight Harvesting.

#### Certification

All fixtures are UL/CUL listed for use in "Dry Applications". "Damp Location" is optional.



Series  
DCP01

Standard Lengths:

4' and 8'

Mounting

W = Wall

**DCP01 - XE - 8 - W - PB - F01M - V - T8 - [ ]**

#### End Caps

FE  
Flat End  
XE  
4 1/2" Extended End

#### Direct Optical Controls

PB  
Semi-Specular Parabolic Baffle  
PBW  
White Parabolic Baffle  
RDPL  
Round Perf Lens  
SQPL  
Square Perf Lens

#### Standard Finishes

F01M Matte White  
F01G Gloss White  
**Premium Finishes**  
F02 Ivory  
F03 Stonewash  
F04 Camel  
F05 Gray Day  
F06 Pebble Beach  
F07 Steel  
F08 Gray Seal  
F09 Mocha  
F10 Bronzed  
F11 Black  
F12 Ultrasonic Clear  
F13 Merlot  
F14 Red Skies  
F15 Lemon  
F16 Forest Hunter  
F17 Olive  
F18 Khaki  
F19 Heather Green  
F20 Blue Print  
F21 Reflex Blue  
F22 Navy  
FCC Custom Color

#### Voltage

120  
277  
\*347  
\*Contact Factory

#### Lamp Type

T8

#### Options

NLCKT  
Separate Night Light Circuit  
EMCKT  
Separate Emergency Circuit  
EBPL  
Emergency Battery Pack (635-700 Lumens)  
EBPH  
Emergency Battery Pack (975-1325 Lumens)  
Dim  
Dimming  
FS  
Fused Ballasts  
GTD  
Generator Transfer Device  
DC  
Clear Extruded 100% DR Acrylic Dust Cover  
AO  
Translucent White Acrylic Overlay above Baffle



Precision Architectural Lighting 4830 Timber Creek Drive Houston, Texas 77017  
Tel 713.946.4343 Fax 713.946.4441 www.pal-lighting.com

To view Wood Grain, Marble and Granite Finishes on our Website see "Products" - "Specialty Finishes".

# DCP01

## Indirect/Direct - T8 Lamps

### Semi-Specular Baffle

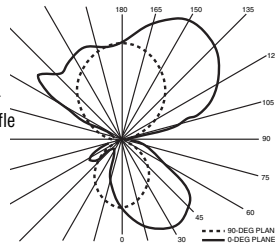
Catalog Number: DCP01-FE-4-W-PB-F01M-120-T8

Report Number: LTL#10344.ies

Luminaire Description: Extruded Aluminum Housing with Specular Aluminum Reflector and Semi-Specular Aluminum Baffle Open Top

Lamps: One Philips F32T8/TL830/ALTO Rated at 2850 Lumens

Total Luminaire Efficiency = 76.6%  
70% Up 30% Down



### Acrylic Optical Panel

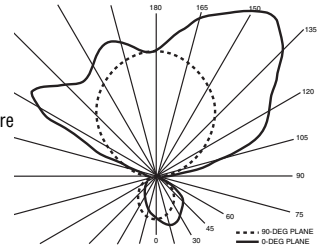
Catalog Number: DCP01-FE-4-W-SQPL-F01M-120-T8

Report Number: LTL#10598.ies

Luminaire Description: Extruded Aluminum Housing with Specular Aluminum Reflector with Frosted Patterned Acrylic Enclosure Open Top

Lamps: One Philips F32T8/TL830/ALTO Rated at 2850 Lumens

Total Luminaire Efficiency = 80.8%  
84% Up 16% Down



### CANDELA DISTRIBUTION LUMENS

	0.0	22.5	45.0	67.5	90.0	112.5	135.0	157.5	180.0
0	262	262	262	262	262	262	262	262	262
5	291	288	281	270	259	247	239	232	232
15	342	330	307	275	242	207	178	160	154
25	379	359	321	268	217	159	116	89	81
35	395	368	318	252	183	110	59	30	22
45	365	331	295	224	142	63	24	47	76
55	296	271	242	183	97	29	57	107	133
65	161	134	112	46	17	11	42	89	114
75	18	10	5	5	3	2	5	10	12
85	4	3	2	0	0	0	0	0	1
90	4	5	3	2	0	0	0	0	0
95	36	50	56	57	15	2	0	0	29
105	231	253	238	164	64	121	35	8	9
115	387	375	324	251	126	160	221	160	153
125	456	444	397	317	186	215	272	351	360
135	506	492	449	347	240	266	290	326	350
145	529	515	464	362	286	295	332	343	351
155	512	488	438	372	324	317	353	370	378
165	446	431	408	375	350	343	348	361	365
175	391	385	381	371	366	360	359	358	358
180	366	366	366	366	366	366	366	366	366

### CANDELA DISTRIBUTION LUMENS

	0.0	22.5	45.0	67.5	90.0	112.5	135.0	157.5	180.0
0	148	148	148	148	148	148	148	148	148
5	160	158	156	152	148	143	139	137	137
15	176	172	165	154	142	129	119	113	110
25	174	171	162	145	127	110	97	89	86
35	159	154	145	128	108	89	76	70	68
45	129	126	119	104	86	69	59	55	53
55	93	91	86	76	63	49	43	40	39
65	58	57	55	49	41	32	29	27	26
75	27	26	26	24	20	16	14	13	13
85	12	11	7	6	5	4	3	2	3
90	17	16	11	4	0	0	0	0	0
95	61	75	75	70	18	4	0	0	40
105	273	287	265	185	82	174	77	9	9
115	420	402	353	333	156	199	361	285	280
125	496	495	497	405	230	274	356	481	527
135	624	632	595	440	294	353	353	426	455
145	697	671	582	469	349	394	420	418	424
155	637	611	561	469	392	416	469	476	482
165	573	552	514	460	423	428	457	480	486
175	474	463	457	446	439	435	437	439	438
180	440	440	440	440	440	440	440	440	440

### COEFFICIENTS OF UTILIZATION - ZONAL CAVITY METHOD

Effective Floor Cavity Reflectance 0.20

RC	80				70				50				30				10				0
RW	70	50	30	10	70	50	30	10	50	30	10	50	30	10	50	30	10	50	30	10	0
0	78	78	78	78	70	70	70	70	55	55	55	42	42	42	29	29	29	23	23	23	23
1	72	69	66	64	65	62	60	58	49	48	46	37	36	36	27	26	26	21	21	21	21
2	66	61	56	53	59	55	51	48	44	41	39	33	32	30	24	23	22	18	18	18	18
3	60	54	48	44	54	48	44	40	39	36	33	30	28	26	21	20	19	16	16	16	16
4	55	47	42	37	49	43	38	34	34	31	28	26	24	22	19	18	17	13	13	13	13
5	50	42	36	32	45	38	33	29	30	27	24	23	21	19	17	15	14	11	11	11	11
6	46	37	31	27	41	34	29	25	27	23	21	21	18	16	15	14	12	10	10	10	10
7	42	33	28	23	38	30	25	22	24	21	18	19	16	14	14	12	11	9	9	9	9
8	39	30	24	20	35	27	22	19	22	18	16	17	14	12	12	11	9	7	7	7	7
9	36	27	21	18	32	25	20	16	20	16	14	15	13	11	11	9	8	6	6	6	6
10	34	25	19	16	30	22	18	14	18	14	12	14	11	10	10	8	7	6	6	6	6

### COEFFICIENTS OF UTILIZATION - ZONAL CAVITY METHOD

Effective Floor Cavity Reflectance 0.20

RC	80				70				50				30				10				0
RW	70	50	30	10	70	50	30	10	50	30	10	50	30	10	50	30	10	50	30	10	0
0	80	80	80	80	70	70	70	70	52	52	52	36	36	36	20	20	20	13	13	13	13
1	73	70	67	64	64	61	59	57	46	44	43	31	31	30	18	18	17	11	11	11	11
2	66	61	56	53	58	54	50	47	40	38	36	28	26	25	16	15	15	10	10	10	10
3	61	54	48	44	53	47	43	39	35	32	30	25	23	21	14	14	13	8	8	8	8
4	55	47	41	37	49	42	37	33	31	28	25	22	20	18	13	12	11	7	7	7	7
5	51	42	36	31	44	37	32	28	28	24	22	19	17	16	11	10	9	6	6	6	6
6	47	37	31	27	41	33	28	24	25	21	19	17	15	13	10	9	8	5	5	5	5
7	43	34	28	23	38	30	25	21	23	19	16	16	13	12	9	8	7	5	5	5	5
8	40	30	24	20	35	27	22	18	20	17	14	14	12	10	8	7	6	4	4	4	4
9	37	27	22	18	32	24	19	16	18	15	12	13	11	9	8	6	6	4	4	4	4
10	34	25	19	16	30	22	17	14	17	13	11	12	9	8	7	6	5	3	3	3	3

