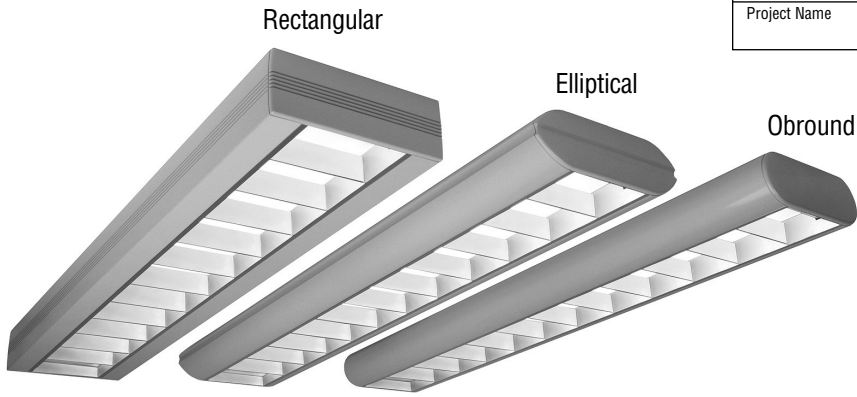


Trilinea™ (IR) Series

Catalog Number	Type
Project Name	



TRSIR03-T8

Indirect/Direct
with Isolation Reflector
(T8 Lamps)

S P E C I F I C A T I O N S

Housing

Two-piece .080" thick extruded aluminum. Die-cast aluminum end plates are secured with no visible fasteners. Standard lengths are 4', 8' and 12'. Provisions may be made for patterns and continuous rows of any length.

Finish

Standard and premium finishes are baked powder coat electrostatically applied (2.0 mil minimum thickness) to assure aesthetics and durability. Standard finish for stems and canopies is white.

Indirect Optical Controls

- (OP) Open top

Direct Optical Controls

- (PB4) 1 1/2" deep semi-specular aluminum parabolic baffle with blades on 4" centers
- (PB3) 1 1/2" deep semi-specular aluminum parabolic baffle with blades on 3" centers
- (PBW) 1 1/2" deep white aluminum parabolic baffle with blades on 4" centers

Reflectors

Side reflectors and isolation reflector are die-formed from .020" thick high reflectance specular aluminum.

Ballast

Standard ballasts are UL/CUL listed, Class P, HPF, electronic, universal 120/277volt, instant start with <10% THD.

Circuitry

All fixtures are factory pre-wired for Inboard/Outboard switching.

Wiring

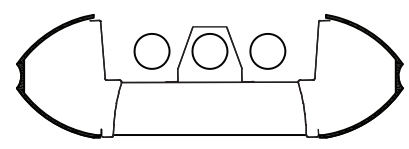
All fixtures intended for continuous rows are provided with factory installed quick-connect wiring.

Controls

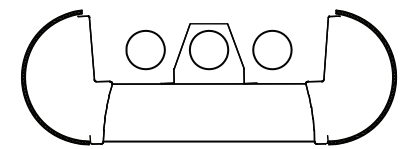
Contact factory for control by Occupancy Sensors, Photo Controls and Daylight Harvesting.

Certification

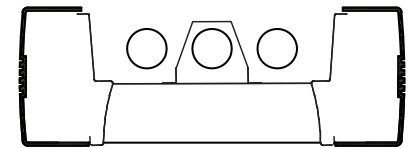
All fixtures are UL/CUL listed for use in "Dry Applications". "Damp Location" is optional.



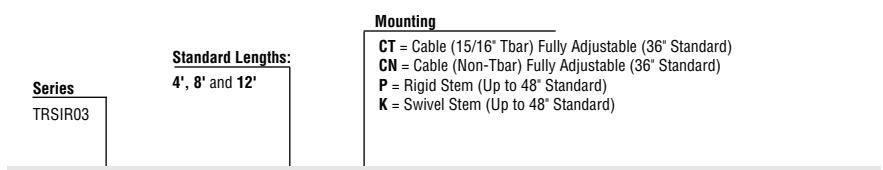
TRSIR03-E
11" x 3 1/2"



TRSIR03-O
9 3/4" x 3 1/2"



TRSIR03-R
9 3/4" x 3 1/2"



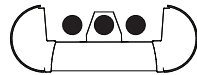
TRSIR03-0-12-CT-OP/PB4-F01M-V-T8-[]

Housing Style	Indirect Optical Controls	Direct Optical Controls	Standard Finishes	Voltage	Lamp Type	Options
E Elliptical	OP Open Top	PB4 (4" O.C.) Semi-Specular Parabolic Baffle	F01M Matte White F01G Gloss White	120	T8	NLCKT Separate Night Light Circuit
O Obround		PB3 (3" O.C.) Semi-Specular Parabolic Baffle	Premium Finishes F02 Ivory F03 Stonewash F04 Carmel F05 Gray Day F06 Pebble Beach F07 Steel F08 Gray Seal F09 Mocha F10 Bronzed F11 Black F12 Ultrasonic Clear	277 347		EMCKT Separate Emergency Circuit
R Rectangular		PBW (4" O.C.) White Parabolic Baffle	F13 Merlot F14 Red Skies F15 Lemon F16 Forest Hunter F17 Olive F18 Khaki F19 Heather Green F20 Blue Print F21 Reflex Blue F22 Navy FCC Custom Color			EBPL Emergency Battery Pack (635-700 Lumens) EBPH Emergency Battery Pack (975-1325 Lumens)
						Dim Dimming FS Fused Ballasts GTD Generator Transfer Device DC Clear Extruded 100% DR Acrylic Dust Cover

To view Wood Grain, Marble and Granite Finishes on our Website see "Products"- "Specialty Finishes".



TRSIR03-T8



Indirect/Direct - T8 Lamps

All Three Lamps On

Catalog Number: TRSIR03-0-4-X-OP/PB4-F01M-120-T8

Report Number: LTL #13765.ies

Luminaire Description: Extruded Aluminum Housing with Specular Aluminum Side Reflectors and Specular Aluminum Isolation Reflector above Center Lamp and with Semi-Specular Aluminum Baffle and Open Top

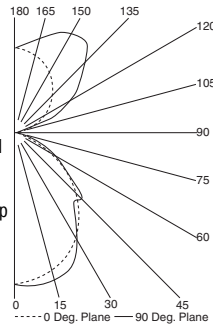
Energized Lamps: Three Philips F32T8/TL841/ALTO Rated at 2850 Lumens Each

Total Luminaire Efficiency = 73.1%

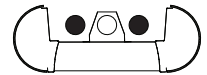
50% Up 50% Down

CANDELA DISTRIBUTION

		LUMENS				
		0.0	22.5	45.0	67.5	90.0
0	1394	1394	1394	1394	1394	1394
5	1384	1390	1392	1400	1403	133
15	1315	1342	1377	1391	1396	386
25	1193	1241	1282	1294	1292	582
35	1029	1080	1071	1026	999	653
45	819	856	766	776	871	624
55	557	562	564	556	553	492
65	150	168	233	285	324	232
75	6	8	15	37	41	32
85	0	0	0	0	0	0
90	0	0	0	0	0	0
95	17	24	3	0	0	22
105	123	243	221	184	173	213
115	251	470	479	485	486	442
125	378	594	713	706	710	571
135	495	665	883	943	937	617
145	596	719	907	1029	1067	546
155	677	757	872	970	1008	398
165	735	774	828	873	893	234
175	767	775	780	790	796	75
180	773	773	773	773	773	



TRSIR03-T8



Indirect/Direct - T8 Lamps

Two Outboard Lamps On and Center Lamp Off

Catalog Number: TRSIR03-0-4-X-OP/PB4-F01M-120-T8

Report Number: LTL #13764.ies

Luminaire Description: Extruded Aluminum Housing with Specular Aluminum Side Reflectors and Specular Aluminum Isolation Reflector above Center Lamp and with Semi-Specular Aluminum Baffle and Open Top

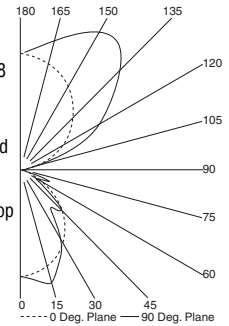
Energized Lamps: Two Philips F32T8/TL841/ALTO Rated at 2850 Lumens Each

Total Luminaire Efficiency = 81.1%

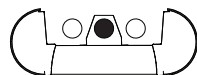
68% Up 32% Down

CANDELA DISTRIBUTION

		LUMENS				
		0.0	22.5	45.0	67.5	90.0
0	706	706	706	706	706	706
5	702	705	710	717	721	68
15	667	691	738	769	774	205
25	604	659	677	648	639	300
35	519	585	515	452	411	314
45	410	425	313	328	378	279
55	277	252	230	173	151	197
65	74	63	93	150	199	109
75	2	2	7	28	31	23
85	0	0	0	0	0	0
90	0	0	0	0	0	0
95	18	25	3	0	0	22
105	124	244	222	184	173	213
115	252	472	479	487	488	443
125	379	596	715	707	710	573
135	495	666	886	947	940	619
145	597	720	909	1032	1070	547
155	679	756	874	972	1010	399
165	736	773	829	876	895	234
175	768	775	782	792	797	75
180	774	774	774	774	774	



TRSIR03-T8



Direct - T8 Lamps

Center Lamp On and Two Outboard Lamps Off

Catalog Number: TRSIR03-0-4-X-OP/PB4-F01M-120-T8

Report Number: LTL #13763.ies

Luminaire Description: Extruded Aluminum Housing with Specular Aluminum Side Reflectors and Specular Aluminum Isolation Reflector above Center Lamp and with Semi-Specular Aluminum Baffle and Open Top

Energized Lamp: One Philips F32T8/TL84/ALTO Rated at 2850 Lumens

Total Luminaire Efficiency = 57.9%

1% Up 99% Down

CANDELA DISTRIBUTION

		LUMENS				
		0.0	22.5	45.0	67.5	90.0
0	683	683	683	683	683	683
5	678	680	680	682	682	65
15	644	650	639	635	637	182
25	586	580	609	648	654	283
35	507	503	554	567	576	339
45	405	430	448	465	481	344
55	275	305	325	386	396	295
65	75	102	133	124	109	114
75	5	6	7	7	6	8
85	0	0	0	0	0	1
90	0	0	0	0	0	0
95	0	0	0	0	0	0
105	0	1	0	0	0	1
115	0	5	3	3	2	3
125	0	5	9	5	5	5
135	0	3	8	10	13	6
145	0	2	6	9	10	3
155	0	0	3	5	7	1
165	0	0	1	2	3	0
175	0	0	0	0	0	0
180	0	0	0	0	0	

