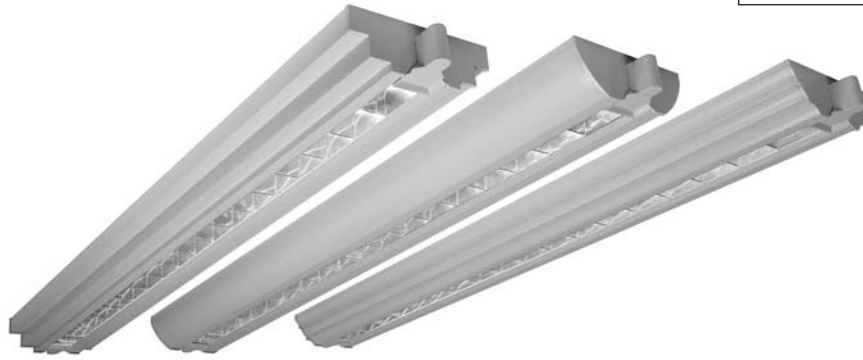


Paladia Suspended Series™

Catalog Number	Type
Project Name	



PLDS03

7" x 2 1/2" Indirect/Direct
(T5 or T5HO Lamps)
Stepped, Rounded or
Classical Profile

S P E C I F I C A T I O N S

Housing

Two-piece .060" thick extruded aluminum. Die-cast aluminum end plates are secured with no visible fasteners. Standard lengths are 4' and 8'. Provisions may be made for patterns and continuous rows of any length.

Finish

Standard and premium finishes are baked powder coat electrostatically applied (2.0 mil minimum thickness) to assure aesthetics and durability. Standard finish for cable canopies is white.

Indirect Optical Control

- (OP) Open
- (DC) Clear extruded 100% DR acrylic dust cover

Direct Optical Control

- (PB) 1 3/8" deep specular parabolic baffle with blades on 2 1/2" centers
- (PBW) 1 3/8" deep white aluminum parabolic baffle with blades on 2 1/2" centers

Reflectors

Die-formed from .020" thick high reflectance specular aluminum.

Ballast

Standard ballasts for T5 and T5HO lamps are UL/CUL listed, Class P, HPF, electronic, universal 120/277volt, programmed rapid start with <10% THD.

Circuitry

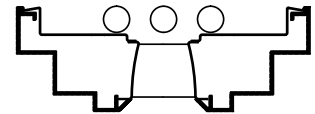
All fixtures are factory pre-wired for a single circuit. Provision for multiple switching/circuiting is optional.

Controls

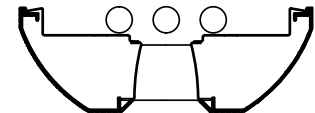
Contact factory for control by Occupancy Sensors, Photo Controls and Daylight Harvesting.

Certification

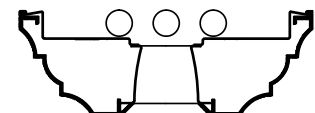
All fixtures are UL/CUL listed for use in 'Dry Applications'. 'Damp Location' is optional.



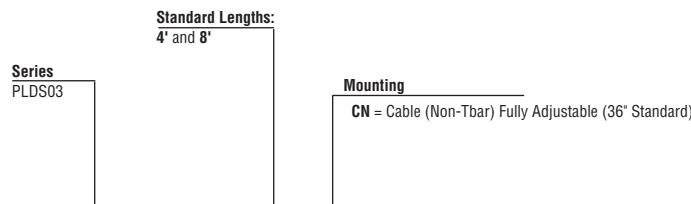
PLDS03-ST



PLDS03-RD



PLDS03-CL



Note: For companion Wall Mounts see Paladia Perimeter Section.

PLDS03-RD-8-CN-OP/PB-F01M-V-T5HO-[]

Style	Indirect Optical Control	Direct Optical Control	Standard Finishes	Voltage	Lamp Type	Options	Dim
CL Classical	OP Open	PB Specular Parabolic Baffle	F01M Matte White F01G Gloss White	120	T5	SS-I/O (Inboard/Outboard) Lamp Row Switching (Common Neutral Utilized)	Dim Dimming
RD Rounded	DC Clear Dust Cover (N/A for T5HO)	PBW White Parabolic Baffle	Premium Finishes F02 Ivory F03 Stonewash F04 Camel F05 Gray Day F06 Pebble Beach F07 Steel F08 Gray Seal F09 Mocha F10 Bronzed F11 Black F12 Ultrasonic Clear	277 347	T5HO	NLCKT Separate Night Light Circuit EMCKT Separate Emergency Circuit EBPL Emergency Battery Pack (635-700 Lumens) EBPH Emergency Battery Pack (975-1325 Lumens)	FS Fused Ballasts GTD Generator Transfer Device AO White Acrylic Baffle Overlay (For Lowest Brightness and Highest Efficiency)
ST Stepped			F13 Merlot F14 Red Skies F15 Lemon F16 Forest Hunter F17 Olive F18 Khaki F19 Heather Green F20 Blue Print F21 Reflex Blue F22 Navy FCC Custom Color				

To view Wood Grain, Marble and Granite Finishes on our Website see "Products"->"Specialty Finishes".



PLDS03

7" x 2 1/2" Indirect/Direct (T5HO Lamps)

Specular Aluminum Baffle with Acrylic Overlay

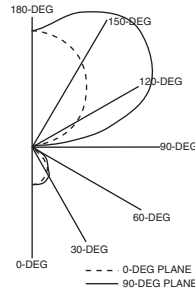
Catalog Number: PLDS03-ST-4-PB-F01-120-T5HO-A0

Report Number: LTL#05755.ies

Luminaire Description: Extruded Aluminum Housing, Formed Semi-Specular Reflector, 18 Cell, 1.25" Deep Specular Aluminum Baffle with Translucent White Acrylic Overlay, Open Top.

Lamps: Three Sylvania FP54/841/HO rated at 4400 lumens each.

Total Luminaire Efficiency = 92.4%
88% Up 12% Down



Specular Aluminum Baffle without Acrylic Overlay

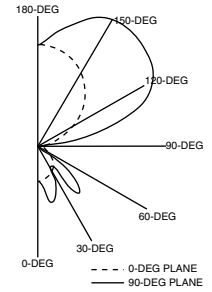
Catalog Number: PLDS03-ST-4-PB-F01-120-T5HO

Report Number: LTL#05758.ies

Luminaire Description: Extruded Aluminum Housing, Formed Semi-Specular Reflector, 18 Cell, 1.25" Deep Specular Aluminum Baffle, Open Top.

Lamps: Three Sylvania FP54/841/HO rated at 4400 lumens each.

Total Luminaire Efficiency = 90.7%
83% Up 17% Down



CANDELA DISTRIBUTION

	0.0	22.5	45.0	67.5	90.0	
0	696	696	696	696	696	
5	693	695	697	694	696	66
15	657	664	683	694	700	192
25	599	614	644	667	675	295
35	521	547	574	535	527	341
45	428	463	403	365	358	313
55	339	315	191	81	30	172
65	13	13	9	5	6	15
75	6	6	5	4	5	5
85	0	0	0	0	0	1
90	0	0	0	0	0	
95	72	341	366	356	351	357
105	385	1021	1405	1479	1499	1269
115	762	1452	1979	2304	2415	1805
125	1126	1756	2332	2647	2759	1944
135	1454	1978	2525	2859	2973	1848
145	1729	2122	2564	2864	2973	1553
155	1947	2191	2519	2723	2797	1134
165	2094	2202	2379	2499	2551	668
175	2170	2171	2212	2227	2236	212
180	2165	2165	2165	2165	2165	

CANDELA DISTRIBUTION

	0.0	22.5	45.0	67.5	90.0	
0	648	648	648	648	648	
5	645	661	697	726	741	69
15	616	750	988	1056	1058	253
25	567	877	896	825	808	377
35	498	800	635	424	431	386
45	415	569	591	1050	1050	564
55	297	464	477	177	52	301
65	14	16	14	9	11	21
75	6	7	5	4	4	7
85	0	0	0	0	0	0
90	0	0	0	0	0	
95	67	320	356	348	343	345
105	324	961	1351	1400	1416	1199
115	644	1323	1880	2224	2334	1705
125	957	1622	2145	2464	2611	1797
135	1243	1816	2352	2635	2740	1698
145	1490	1923	2400	2691	2780	1433
155	1682	1960	2318	2543	2618	1037
165	1815	1945	2136	2266	2318	598
175	1882	1895	1940	1962	1969	186
180	1881	1881	1881	1881	1881	

COEFFICIENTS OF UTILIZATION - ZONAL CAVITY METHOD

Effective Floor Cavity Reflectance 0.20

RC	80			70			50			30			10			0		
RW	70	50	30	10	70	50	30	10	50	30	10	50	30	10	50	30	10	0
0	90	90	90	90	79	79	79	79	57	57	57	37	37	37	19	19	19	11
1	83	79	76	73	72	69	66	64	50	49	47	33	32	32	17	17	17	10
2	76	69	64	60	66	61	57	53	45	42	40	30	28	27	16	15	15	9
3	69	61	55	50	60	54	49	45	40	36	34	26	25	23	14	14	13	8
4	63	54	48	43	55	48	42	38	35	32	29	24	22	20	13	12	11	7
5	58	48	41	36	50	42	37	32	31	28	25	21	19	17	12	11	10	6
6	53	43	36	31	46	38	32	28	28	24	22	19	17	15	11	10	9	6
7	49	39	32	27	43	34	28	24	25	22	19	17	15	13	10	9	8	5
8	45	35	28	24	39	31	25	21	23	19	16	16	13	12	9	8	7	4
9	42	31	25	21	36	28	22	19	21	17	14	14	12	10	8	7	6	4
10	39	29	22	18	34	25	20	16	19	15	13	13	11	9	7	6	5	3

COEFFICIENTS OF UTILIZATION - ZONAL CAVITY METHOD

Effective Floor Cavity Reflectance 0.20

RC	80			70			50			30			10			0		
RW	70	50	30	10	70	50	30	10	50	30	10	50	30	10	50	30	10	0
0	90	90	90	90	79	79	79	79	59	59	59	40	40	40	23	23	23	15
1	82	79	76	73	72	69	67	65	52	50	49	36	35	34	21	21	20	14
2	75	69	64	60	66	61	57	54	46	43	41	32	31	29	19	18	18	12
3	69	61	55	51	61	54	49	45	41	38	35	29	27	25	17	16	16	11
4	63	54	48	43	55	48	43	38	36	33	30	26	24	22	16	15	14	10
5	58	48	42	37	51	43	37	33	33	29	26	23	21	19	14	13	12	8
6	53	43	36	32	47	38	33	28	29	25	22	21	18	16	13	12	11	7
7	49	39	32	27	43	34	29	25	26	22	19	19	16	14	11	10	9	6
8	45	35	28	24	40	31	25	21	24	20	17	17	14	12	10	9	8	6
9	42	31	25	21	37	28	22	19	21	17	15	15	13	11	9	8	7	5
10	39	28	22	18	34	25	20	16	19	16	13	14	11	9	8	7	6	4

QUICK SELECTION TABLE

Number of 4' luminaires required for initial illumination of 50 footcandles

Luminaire suspension length = 18" Working Plane Height = 30" Floor Reflectance = .20

Room HT	8				9				10				12			
Ceil RF	80		70		80		70		80		70		80		70	
Wall RF	70	50	50	30	70	50	50	30	70	50	50	30	70	50	50	30
Width Length																
10. 10.	1	1	1	1	1	1	1	2	1	1	1	2	1	2	2	2
10. 15.	1	1	2	2	1	2	2	2	1	2	2	2	2	2	2	2
15. 20.	2	2	2	3	2	2	3	3	2	2	3	3	2	3	3	3
15. 30.	3	3	3	4	3	3	3	4	3	3	4	4	3	4	4	5
20. 20.	3	3	3	3	3	3	3	3	3	3	4	4	3	3	4	4
20. 30.	3	4	4	4	4	4	4	5	4	4	4	5	4	4	5	5
20. 40.	4	5	5	5	4	5	5	6	5	5	6	6	5	5	6	7
20. 60.	6	6	7	8	6	7	8	8	7	7	8	9	7	8	9	9
30. 30.	5	5	6	6	5	5	6	6	5	5	6	7	5	6	7	7
30. 40.	6	6	7	8	6	7	7	8	6	7	8	8	7	7	8	9
30. 50.	7	8	9	9	8	8	9	9	8	8	9	10	8	9	10	11
30. 60.	9	9	10	11	9	9	11	11	9	10	11	12	10	10	12	13
60. 60.	16	17	19	20	17	17	20	20	17	18	20	21	17	18	21	22
60. 80.	22	22	25	26	22	23	26	27	22	23	26	27	23	24	27	29
60. 100.	27	27	31	32	27	28	32	33	27	28	32	33	28	29	34	35
100. 100.	44	45	51	52	44	45	52	53	45	46	52	54	45	47	54	55

QUICK SELECTION TABLE

Number of 4' luminaires required for initial illumination of 50 footcandles

Luminaire suspension length = 18" Working Plane Height = 30" Floor Reflectance = .20

Room HT	8				9				10				12			
Ceil RF	80		70		80		70		80		70		80		70	
Wall RF	70	50	50	30	70	50	50	30	70	50	50	30	70	50	50	30
Width Length																
10. 10.	1	1	1	1	1	1	1	2	1	1	1	2	1	2	2	2
10. 15.	1	1	2	2	1	2	2	2	1	2	2	2	2	2	2	2
15. 20.	2	2	2	3	2	2	3	3	2	2	3	3	2	3	3	3
15. 30.	3	3	3	3	3	3	3	4	3	3	4	4	3	4	4	4
20. 20.	3	3	3	3	3	3	3	3	3	3	3	3	3	3	4	4
20. 30.	3	4	4	4	4	4	4	5	4	4	4	5	4	4	5	5
20. 40.	4	5	5	5	4	5	5	6	5	5	6	6	5	5	6	7
20. 60.	6	7	7	8	6	7	8	8	7	7	8	8	7	7	8	9
30. 30.	5	5	6	6	5	5	6	6	5	5	6	6	5	5	6	7
30. 40.	6	6	7	8	6	7	7	8	6	7	8	8	7	7	8	9
30. 50.	7	8	9	9	8	8	9	9	8	8	9	9	8	8	9	10
30. 60.	9	9	10	11	9	9	11	11	9	10	11	11	10	10	12	13
60. 60.	17	17	19	20	17	17	20	20	17	18	20	21	17	18	21	22
60. 80.	22	22	25	26	22	23	26	26	22	23	26	26	23	24	27	28
60. 100.	27	28	31													