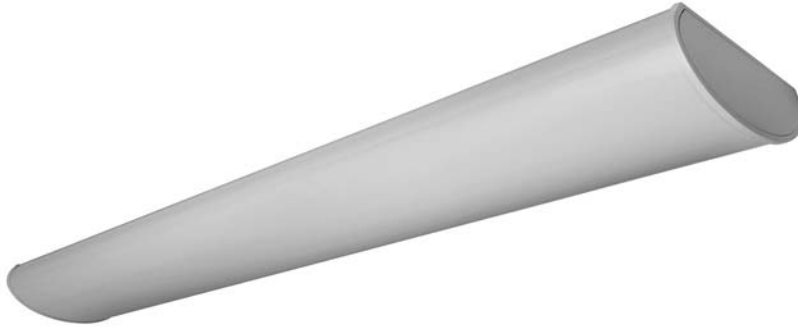


AE8300 Series

Catalog Number

Type

Project Name



AE8301

8³/₈" x 3" Ellipse Indirect
(T8, T5 or T5HO Lamps)

S P E C I F I C A T I O N S

Housing

One-piece .093" thick extruded aluminum. Die-cast aluminum end plates are secured with no visible fasteners. Standard lengths are 4', 8' and 12'. Provisions may be made for patterns and continuous rows of any length.

Finish

Standard and premium finishes are baked powder coat electrostatically applied (2.0 mil minimum thickness) to assure aesthetics and durability. Standard finish for stems and canopies is white.

Contoured Ends (Optional)

One piece cast aluminum finished to match fixture housing.

Optical Control

- (OP) Open
- (DC) Clear extruded 100% DR acrylic dust cover

Reflector

Die-formed from .020" thick high reflectance specular aluminum.

Ballast

Standard ballasts for T5 and T5HO lamps are UL/CUL Listed, Class P, HPF, electronic, universal 120/277volt, programmed rapid start with <10% THD.

Standard ballasts for T8 lamps are UL/CUL Listed, Class P, HPF, electronic, universal 120/277volt, instant start with <10% THD.

Circuitry

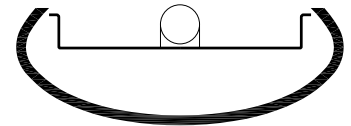
All fixtures are factory pre-wired for a single circuit. Provision for multiple switching/circuiting is optional.

Controls

Contact factory for control by Occupancy Sensors, Photo Controls and Daylight Harvesting.

Certification

All fixtures are UL/CUL listed for use in 'Dry Applications'. 'Damp Location' is optional.



Standard Lengths:
4', 8' and 12'

Mounting

CN = Cable (Non-Tbar) Fully Adjustable (36" Standard)
P = Rigid Stem (Up to 48" Standard)
K = Swivel Stem (Up to 48" Standard)

Series
AE8301

AE8301-12-CN-DC-F01M-V-T8-[]

Optical Control	Standard Finishes	Voltage	Lamp Type	Options
OP Open	F01M Matte White F01G Gloss White	120	T8	NLCKT Separate Night Light Circuit
DC Clear Dust Cover	Premium Finishes F02 Ivory F13 Merlot F03 Stonewash F14 Red Skies F04 Camel F15 Lemon F05 Gray Day F16 Forest Hunter F06 Pebble Beach F17 Olive F07 Steel F18 Khaki F08 Gray Seal F19 Heather Green F09 Mocha F20 Blue Print F10 Bronzed F21 Reflex Blue F11 Black F22 Navy F12 Ultrasonic Clear FCC Custom Color	277 347	T5 T5HO	EMCKT Separate Emergency Circuit EBPL Emergency Battery Pack (635-700 Lumens) EBPH Emergency Battery Pack (975-1325 Lumens)
				Dim Dimming FS Fused Ballasts GTD Generator Transfer Device CE Contoured Ends

To view Wood Grain, Marble and Granite Finishes on our Website see "Products"-"Specialty Finishes".



AE8301

8³/₈" x 3" Ellipse Indirect (T8 or T5HO Lamps)

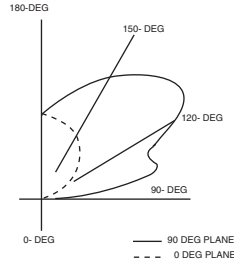
Open

Catalog Number: AE8301-4-X-OP-F01-120-T8

Report Number: LTL #01074.ies

Luminaire Description: Extruded Aluminum Housing,
Specular Aluminum Reflector

Lamps: One F032T8RS rated at 2900
lumens



Total Luminaire Efficiency = 87.5%

100% Up 0% Down

RP-1 Compliant

	CANDELA DISTRIBUTION					LUMENS	
	0.0	22.5	45.0	67.5	90.0		
90	3	19	20	20	20		
95	15	127	180	184	187	159	
105	61	269	350	490	535	365	
115	120	328	535	553	553	434	
125	181	356	581	736	767	477	
135	238	377	557	696	747	411	
145	285	391	521	626	665	316	
155	322	394	480	546	571	216	
165	349	385	433	469	481	121	
175	362	368	378	390	394	37	
180	366	366	366	366	366		

COEFFICIENTS OF UTILIZATION - ZONAL CAVITY METHOD

Effective Floor Cavity Reflectance 0.20

RC	80			70			50			30			10			0		
	70	50	30	10	70	50	30	10	50	30	10	50	30	10	50	30	10	0
0	83	83	83	83	71	71	71	71	49	49	49	28	28	28	9	9	9	0
1	76	72	69	66	65	62	59	57	42	41	39	24	24	23	8	8	7	0
2	69	63	58	54	59	54	50	47	37	35	33	21	20	19	7	7	6	0
3	63	55	49	45	53	47	43	39	32	30	27	19	17	16	6	6	5	0
4	57	49	42	38	49	42	37	33	29	25	23	17	15	14	5	5	4	0
5	52	43	37	32	44	37	32	28	25	22	20	15	13	12	5	4	4	0
6	48	38	32	27	41	33	28	24	23	19	17	13	11	10	4	4	3	0
7	44	34	28	24	37	30	24	20	20	17	15	12	10	9	4	3	3	0
8	41	31	25	20	35	27	21	18	18	15	13	11	9	8	3	3	2	0
9	38	28	22	18	32	24	19	16	17	13	11	10	8	7	3	3	2	0
10	35	25	20	16	30	22	17	14	15	12	10	9	7	6	3	2	2	0

QUICK SELECTION TABLE

Number of 4' luminaires required for initial illumination of 50 footcandles

Luminaire suspension length = 18" Working Plane Height = 30" Floor Reflectance = .20

Room HT	8				9				10				12				
	Ceil RF		Wall RF		Ceil RF		Wall RF		Ceil RF		Wall RF		Ceil RF		Wall RF		
10.	10.	4	4	5	5	4	5	5	6	4	5	6	7	5	6	7	9
10.	15.	5	5	6	7	5	6	7	8	5	7	7	9	6	8	9	11
15.	20.	8	9	11	11	9	10	11	12	9	10	12	14	10	12	14	16
15.	30.	12	13	15	16	12	14	16	17	13	15	17	19	14	16	19	22
20.	20.	11	11	13	14	11	12	14	15	11	13	15	17	13	15	17	19
20.	30.	15	16	19	20	16	17	20	21	16	18	21	23	17	20	23	26
20.	40.	20	21	24	26	20	22	26	27	21	23	27	29	22	25	30	33
20.	60.	29	30	35	37	30	32	37	39	31	33	39	42	32	36	42	46
30.	30.	22	23	27	28	22	24	28	30	23	25	29	32	24	27	32	35
30.	40.	28	30	35	36	29	31	36	38	30	32	38	40	31	35	41	44
30.	50.	35	37	43	45	36	38	44	47	37	39	46	49	39	42	49	53
30.	60.	41	43	51	53	42	45	52	55	43	46	54	57	46	50	58	63
60.	60.	80	82	96	99	81	84	98	102	82	86	101	105	85	90	105	111
60.	80.	105	108	126	129	107	111	129	133	108	113	132	137	111	118	137	144
60.	100.	131	134	157	160	133	137	160	164	134	140	163	168	138	145	169	177
100.	100.	215	219	256	260	217	222	260	265	219	225	264	270	224	232	271	280

