



LUMINAIRE TESTING LABORATORY, INC.

SUSTAINING MEMBER
of the
IESNA

905 Harrison Street · Allentown, PA 18103 · 610-770-1044 · Fax 610-770-8912 · www.LuminaireTesting.com

LTL NUMBER: 13765

DATE: 08-20-2008

PREPARED FOR: PRECISION ARCHITECTURAL LIGHTING

CATALOG NUMBER: TRS03-0-4-X-OP/PB4-X-120-T8-IR

LUMINAIRE: EXTRUDED ALUMINUM HOUSING, FORMED SPECULAR ALUMINUM UPPER REFLECTORS, 12 CELL, 1-1/2" DEEP, FORMED SEMI-SPECULAR ALUMINUM LOUVER, OPEN TOP.

LAMPS: THREE 32 WATT T8 LINEAR FLUORESCENT LAMPS RATED AT 2850 LUMENS EACH.

LAMP CATALOG NUMBER: PHILIPS F32T8/TL841/ALTO

BALLASTS: ONE UNIVERSAL LIGHTING TECHNOLOGIES B132IUNVHP-B AND

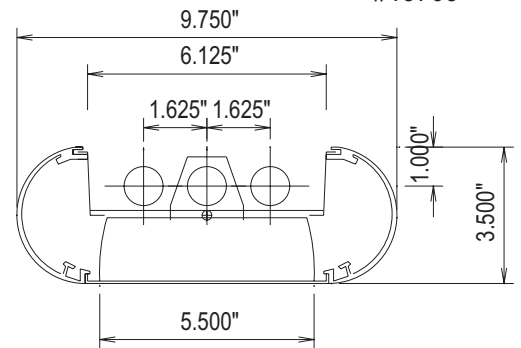
ONE UNIVERSAL LIGHTING TECHNOLOGIES B232IUNVHP-B

MOUNTING: PENDANT

TOTAL INPUT WATTS = 88.7 AT 120.0 VOLTS

THE 0 DEGREE PLANE IS PARALLEL WITH THE LAMPS.

#13765



CANDELA DISTRIBUTION

FLUX

	0.0	22.5	45.0	67.5	90.0	
0	1394	1394	1394	1394	1394	
5	1384	1390	1392	1400	1403	133
15	1315	1342	1377	1391	1396	386
25	1193	1241	1282	1294	1292	582
35	1029	1080	1071	1026	999	653
45	819	856	766	776	871	624
55	557	562	564	556	553	492
65	150	168	233	285	324	232
75	6	8	15	37	41	32
85	0	0	0	0	0	0
90	0	0	0	0	0	0
95	17	24	3	0	0	22
105	123	243	221	184	173	213
115	251	470	479	485	486	442
125	378	594	713	706	710	571
135	495	665	883	943	937	617
145	596	719	907	1029	1067	546
155	677	757	872	970	1008	398
165	735	774	828	873	893	234
175	767	775	780	790	796	75
180	773	773	773	773	773	

ZONAL LUMEN SUMMARY

ZONE	LUMENS	%LAMP	%FIXT
0- 30	1101	12.9	17.6
0- 40	1754	20.5	28.1
0- 60	2870	33.6	45.9
0- 90	3135	36.7	50.1
90-120	676	7.9	10.8
90-130	1248	14.6	20.0
90-150	2411	28.2	38.6
90-180	3118	36.5	49.9
0-180	6252	73.1	100.0

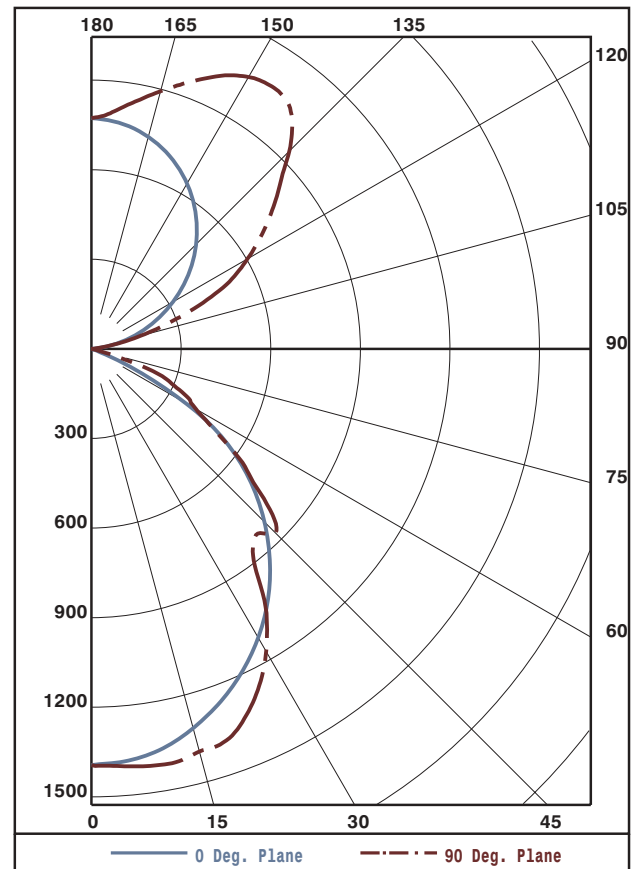
TOTAL LUMINAIRE EFFICIENCY: 73.1%

CIE TYPE: GENERAL DIFFUSE

PLANE: 0-DEG 90-DEG

SPACING CRITERIA: 1.2 1.2

SHIELDING ANGLES: 22 24



Approved By: MG

THIS REPORT BASED ON LM-41 AND OTHER PERTINENT IESNA PROCEDURES.



LTL NUMBER: 13765

DATE: 08-20-2008

PREPARED FOR: PRECISION ARCHITECTURAL LIGHTING

COEFFICIENTS OF UTILIZATION - ZONAL CAVITY METHOD
EFFECTIVE FLOOR CAVITY REFLECTANCE 0.20

Table with 18 columns (RC, RW, and 16 numerical values) and 11 rows (0-10).

PLANE: 0-DEG 90-DEG
LUMINOUS LENGTH: 48.000 5.500

Table with 4 columns (ANGLE IN DEG, AVERAGE 0-DEG, AVERAGE 45-DEG, AVERAGE 90-DEG) and 6 rows (0, 45, 55, 65, 75, 85).



LUMINAIRE TESTING LABORATORY, INC.

SUSTAINING MEMBER of the IESNA

905 Harrison Street · Allentown, PA 18103 · 610-770-1044 · Fax 610-770-8912 · www.LuminaireTesting.com

LTL NUMBER: 13765

DATE: 08-20-2008

PREPARED FOR: PRECISION ARCHITECTURAL LIGHTING

CANDELA DISTRIBUTION

Table with 6 columns of candela values for various angles from 0 to 180 degrees.

ZONAL LUMEN SUMMARY

Table with 2 columns showing lumen values for various angular zones from 0-5 to 175-180 degrees.

THIS TEST WAS CONDUCTED USING RELATIVE PHOTOMETRY TECHNIQUES ACCORDING TO STANDARD IESNA PROCEDURES. THE USER MUST THEREFORE USE CAUTION IN THE FOLLOWING SITUATIONS: 1) THIS TEST WAS PERFORMED USING A SPECIFIC BALLAST/LAMP COMBINATION. EXTRAPOLATION OF THESE DATA FOR OTHER BALLAST/LAMP COMBINATIONS MAY PRODUCE ERRONEOUS RESULTS. 2) ACCORDING TO IESNA PROCEDURES, THE BALLAST(S) AND LAMP(S) ARE PRESUMED TO PRODUCE 100% OF RATED OUTPUT. AN APPROPRIATE BALLAST FACTOR MUST BE APPLIED TO THE LUMEN OUTPUT RATINGS AND LUMINOUS INTENSITY VALUES GIVEN. 3) THIS TEST WAS CONDUCTED IN A CONTROLLED LABORATORY ENVIRONMENT WHERE THE AMBIENT TEMPERATURE WAS HELD AT 25°C ±1°C. FIELD PERFORMANCE MAY DIFFER PARTICULARLY IN REGARDS TO CHANGE IN LUMINOUS OUTPUT AS A RESULT OF DIFFERENCE IN AMBIENT TEMPERATURE AND METHOD OF MOUNTING THE LUMINAIRE.