



**LUMINAIRE TESTING LABORATORY, INC.**

SUSTAINING  
MEMBER  
of the  
IESNA

905 Harrison Street · Allentown, PA 18103 · 610-770-1044 · Fax 610-770-8912 · www.LuminaireTesting.com

LTL NUMBER: 13764

DATE: 08-20-2008

PREPARED FOR: PRECISION ARCHITECTURAL LIGHTING

CATALOG NUMBER: TRS03-0-4-X-OP/PB4-X-120-T8-IR

LUMINAIRE: EXTRUDED ALUMINUM HOUSING, FORMED SPECULAR ALUMINUM  
UPPER REFLECTORS, 12 CELL, 1-1/2" DEEP, FORMED SEMI-SPECULAR  
ALUMINUM LOUVER, OPEN TOP.

LAMPS: TWO 32 WATT T8 LINEAR FLUORESCENT LAMPS RATED AT 2850 LUMENS  
EACH.

LAMP CATALOG NUMBER: PHILIPS F32T8/TL841/ALTO

BALLAST: ONE UNIVERSAL LIGHTING TECHNOLOGIES B232IUNVHP-B

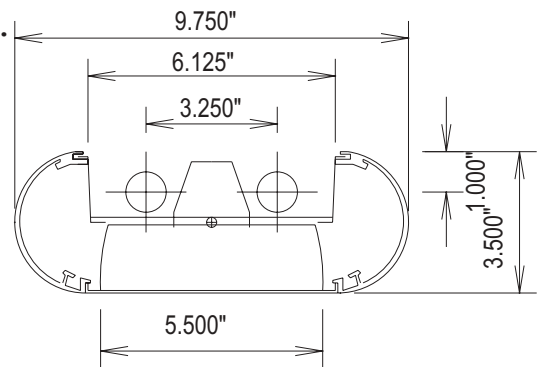
MOUNTING: PENDANT

TOTAL INPUT WATTS = 59.1 AT 120.0 VOLTS  
THE 0 DEGREE PLANE IS PARALLEL WITH THE LAMPS.

#13764

CANDELA DISTRIBUTION

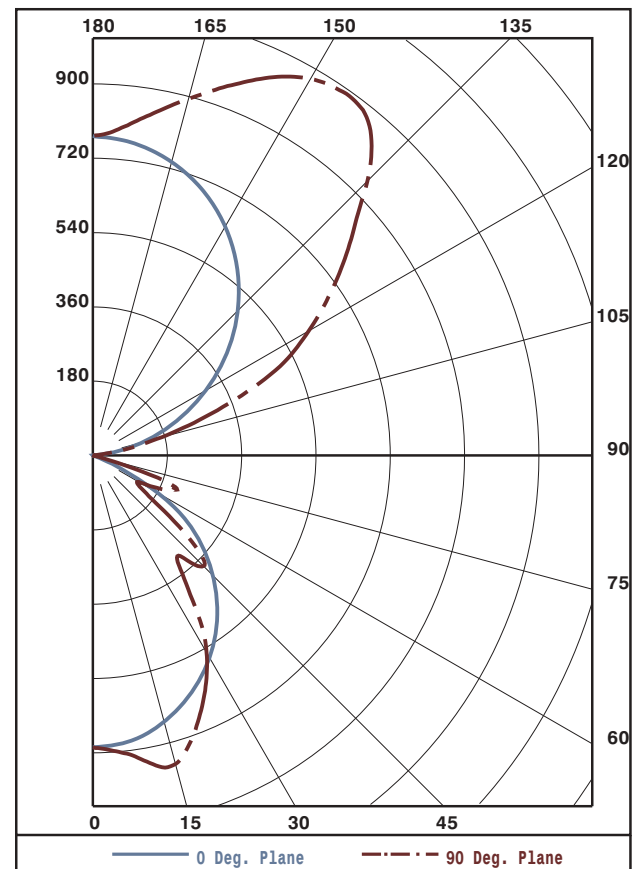
	0.0	22.5	45.0	67.5	90.0	FLUX
0	706	706	706	706	706	
5	702	705	710	717	721	68
15	667	691	738	769	774	205
25	604	659	677	648	639	300
35	519	585	515	452	411	314
45	410	425	313	328	378	279
55	277	252	230	173	151	197
65	74	63	93	150	199	109
75	2	2	7	28	31	23
85	0	0	0	0	0	0
90	0	0	0	0	0	
95	18	25	3	0	0	22
105	124	244	222	184	173	213
115	252	472	479	487	488	443
125	379	596	715	707	710	573
135	495	666	886	947	940	619
145	597	720	909	1032	1070	547
155	679	756	874	972	1010	399
165	736	773	829	876	895	234
175	768	775	782	792	797	75
180	774	774	774	774	774	



ZONAL LUMEN SUMMARY

ZONE	LUMENS	%LAMP	%FIXT
0- 30	573	10.1	12.4
0- 40	887	15.6	19.2
0- 60	1362	23.9	29.5
0- 90	1495	26.2	32.4
90-120	678	11.9	14.7
90-130	1251	22.0	27.1
90-150	2417	42.4	52.3
90-180	3125	54.8	67.6
0-180	4620	81.1	100.0

TOTAL LUMINAIRE EFFICIENCY: 81.1%  
 CIE TYPE: SEMI-INDIRECT  
 PLANE: 0-DEG 90-DEG  
 SPACING CRITERIA: 1.2 1.2  
 SHIELDING ANGLES: 22 24



Approved By: MG



LUMINAIRE TESTING LABORATORY, INC.

SUSTAINING MEMBER of the IESNA

905 Harrison Street · Allentown, PA 18103 · 610-770-1044 · Fax 610-770-8912 · www.LuminaireTesting.com

LTL NUMBER: 13764

DATE: 08-20-2008

PREPARED FOR: PRECISION ARCHITECTURAL LIGHTING

COEFFICIENTS OF UTILIZATION - ZONAL CAVITY METHOD
EFFECTIVE FLOOR CAVITY REFLECTANCE 0.20

Table with columns RC, RW, and rows for angles 80, 70, 50, 30, 10, 0. Values range from 37 to 83.

PLANE: 0-DEG 90-DEG
LUMINOUS LENGTH: 48.000 5.500

Table with columns ANGLE IN DEG, AVERAGE 0-DEG, AVERAGE 45-DEG, AVERAGE 90-DEG. Values range from 0 to 4145.



LUMINAIRE TESTING LABORATORY, INC.

SUSTAINING MEMBER of the IESNA

905 Harrison Street · Allentown, PA 18103 · 610-770-1044 · Fax 610-770-8912 · www.LuminaireTesting.com

LTL NUMBER: 13764

DATE: 08-20-2008

PREPARED FOR: PRECISION ARCHITECTURAL LIGHTING

CANDELA DISTRIBUTION

Table with 6 columns of candela values for angles 0.0, 22.5, 45.0, 67.5, 90.0. Values range from 0 to 774.

ZONAL LUMEN SUMMARY

Table with 2 columns: Zonal angle ranges (0-5 to 175-180) and corresponding lumen values (17 to 19).

THIS TEST WAS CONDUCTED USING RELATIVE PHOTOMETRY TECHNIQUES ACCORDING TO STANDARD IESNA PROCEDURES. THE USER MUST THEREFORE USE CAUTION IN THE FOLLOWING SITUATIONS: 1) THIS TEST WAS PERFORMED USING A SPECIFIC BALLAST/LAMP COMBINATION. EXTRAPOLATION OF THESE DATA FOR OTHER BALLAST/LAMP COMBINATIONS MAY PRODUCE ERRONEOUS RESULTS. 2) ACCORDING TO IESNA PROCEDURES, THE BALLAST(S) AND LAMP(S) ARE PRESUMED TO PRODUCE 100% OF RATED OUTPUT. AN APPROPRIATE BALLAST FACTOR MUST BE APPLIED TO THE LUMEN OUTPUT RATINGS AND LUMINOUS INTENSITY VALUES GIVEN. 3) THIS TEST WAS CONDUCTED IN A CONTROLLED LABORATORY ENVIRONMENT WHERE THE AMBIENT TEMPERATURE WAS HELD AT 25°C ±1°C. FIELD PERFORMANCE MAY DIFFER PARTICULARLY IN REGARDS TO CHANGE IN LUMINOUS OUTPUT AS A RESULT OF DIFFERENCE IN AMBIENT TEMPERATURE AND METHOD OF MOUNTING THE LUMINAIRE.