



LTL NUMBER: 07195

DATE: 01-14-2003

PREPARED FOR: PRECISION ARCHITECTURAL LIGHTING

CATALOG NUMBER: XXS02-PP4-4-PB-X-120-T8

LUMINAIRE: EXTRUDED ALUMINUM HOUSING, FORMED SPECULAR ALUMINUM REFLECTORS BESIDE LAMPS, 12 CELL, 1 1/2" DEEP, FORMED SEMI-SPECULAR ALUMINUM LOUVER BELOW LAMPS, CLEAR POLYCARBONATE ENCLOSURE WITH LAMINATED PERFORATED SPECULAR LAYER ABOVE LAMPS.

LAMPS: TWO PHILIPS F32T8/TL841 RATED AT 2850 LUMENS EACH.

BALLAST: ONE ADVANCE REL-2P32-SC

MOUNTING: PENDENT

LUMEN TO CANDELA RATIO USED = 9.18

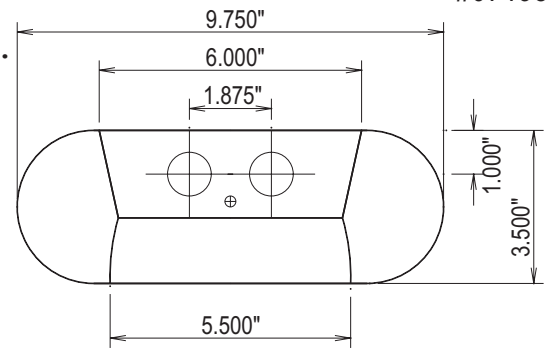
TOTAL INPUT WATTS = 57.7 AT 120.0 VOLTS

THE 0 DEGREE PLANE IS PARALLEL WITH THE LAMPS.

#07195

CANDELA DISTRIBUTION

	0.0	22.5	45.0	67.5	90.0	FLUX
0	790	790	790	790	790	79
5	785	798	813	821	829	251
15	754	815	900	959	977	424
25	685	810	938	1033	1068	535
35	591	770	933	953	953	549
45	473	679	739	763	806	508
55	340	519	555	692	718	235
65	131	204	269	259	275	30
75	11	19	22	28	29	2
85	1	1	1	1	1	20
90	0	0	0	0	0	142
95	5	14	17	17	17	279
105	56	116	153	160	160	331
115	142	213	316	354	365	318
125	228	283	380	462	489	277
135	304	351	420	477	501	214
145	365	404	443	480	497	134
155	414	442	471	489	495	45
165	449	455	481	490	498	
175	463	462	469	469	469	
180	464	464	464	464	464	



ZONAL LUMEN SUMMARY

ZONE	LUMENS	%LAMP	%FIXT
0- 30	753	13.2	17.2
0- 40	1288	22.6	29.5
0- 60	2345	41.1	53.6
0- 90	2612	45.8	59.8
90-120	440	7.7	10.1
90-130	771	13.5	17.6
90-150	1366	24.0	31.3
90-180	1759	30.9	40.2
0-180	4371	76.7	100.0

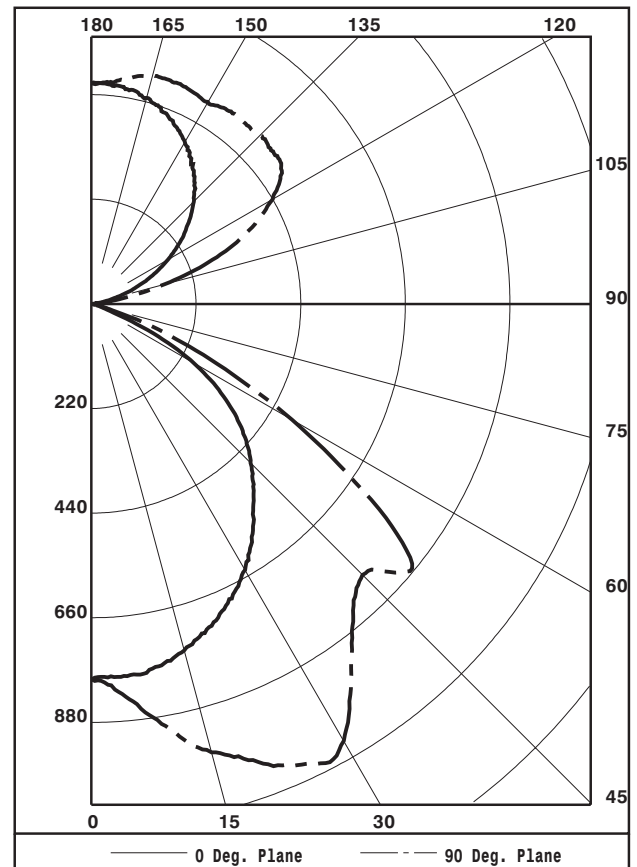
TOTAL LUMINAIRE EFFICIENCY: 76.7%

CIE TYPE: GENERAL DIFFUSE

PLANE: 0-DEG 90-DEG

SPACING CRITERIA: 1.2 1.7

SHIELDING ANGLES: 21 27



TESTED BY HERSCHEL SCHRECK
CHECKED BY MIKE GRATHER



LUMINAIRE TESTING LABORATORY, INC.



905 Harrison Street · Allentown, PA 18103 · (610) 770-1044 · Fax (610) 770-8912 · www.LuminaireTesting.com

LTL NUMBER: 07195

DATE: 01-14-2003

PREPARED FOR: PRECISION ARCHITECTURAL LIGHTING

COEFFICIENTS OF UTILIZATION - ZONAL CAVITY METHOD
EFFECTIVE FLOOR CAVITY REFLECTANCE 0.20

Table with columns RC, RW, and rows for cavity heights 80, 70, 50, 30, 10, 0. Each row contains 18 numerical values representing utilization coefficients.

PLANE: 0-DEG 90-DEG
LUMINOUS LENGTH: 48.000 5.500

Table with columns ANGLE IN DEG, AVERAGE 0-DEG, AVERAGE 45-DEG, AVERAGE 90-DEG. Rows show values for angles 0, 45, 55, 65, 75, 85.



LTL NUMBER: 07195

DATE: 01-14-2003

PREPARED FOR: PRECISION ARCHITECTURAL LIGHTING

CANDELA DISTRIBUTION

ZONAL LUMEN SUMMARY

Table with 6 columns: Candela values (0-180) and Zonal Lumen Summary (0-180). The table shows the distribution of light intensity across different angles and the corresponding cumulative lumen output for each zone.

THIS TEST WAS CONDUCTED USING RELATIVE PHOTOMETRY TECHNIQUES ACCORDING TO STANDARD IESNA PROCEDURES. THE USER MUST THEREFORE USE CAUTION IN THE FOLLOWING SITUATIONS: 1) THIS TEST WAS PERFORMED USING A SPECIFIC BALLAST/LAMP COMBINATION. EXTRAPOLATION OF THESE DATA FOR OTHER BALLAST/LAMP COMBINATIONS MAY PRODUCE ERRONEOUS RESULTS. 2) ACCORDING TO IESNA PROCEDURES, THE BALLAST(S) AND LAMP(S) ARE PRESUMED TO PRODUCE 100% OF RATED OUTPUT. AN APPROPRIATE BALLAST FACTOR MUST BE APPLIED TO THE LUMEN OUTPUT RATINGS AND LUMINOUS INTENSITY VALUES GIVEN. 3) THIS TEST WAS CONDUCTED IN A CONTROLLED LABORATORY ENVIRONMENT WHERE THE AMBIENT TEMPERATURE WAS HELD AT 25 C 1 C. FIELD PERFORMANCE MAY DIFFER PARTICULARLY IN REGARDS TO CHANGE IN LUMINOUS OUTPUT AS A RESULT OF DIFFERENCE IN AMBIENT TEMPERATURE AND METHOD OF MOUNTING THE LUMINAIRE.



LUMINAIRE TESTING LABORATORY, INC.



905 Harrison Street · Allentown, PA 18103 · (610) 770-1044 · Fax (610) 770-8912 · www.LuminaireTesting.com

INITIAL ILLUMINATION OF 50 FOOTCANDLES USING LTL TEST NUMBER 07195
LUMINAIRE SUSPENSION LENGTH = 1.5
WORKING PLANE HEIGHT = 2.50
FLOOR REFLECTANCE = 20

Table with columns for ROOM HT, CEIL RF, WALL RF, WIDTH, and LENGTH, and rows for room dimensions (e.g., 10. 10., 10. 15., etc.) and footcandle values.

QUANTITY OF LUMINAIRES