



LTL NUMBER: 07235

DATE: 02-19-2003

PREPARED FOR: PRECISION ARCHITECTURAL LIGHTING

CATALOG NUMBER: TRSO2-SP-4-X-PB-X-120-T8

LUMINAIRE: EXTRUDED ALUMINUM HOUSING, FORMED SPECULAR ALUMINUM REFLECTORS, 12 CELL, 1 1/2" DEEP, FORMED SEMI-SPECULAR ALUMINUM LOUVER BELOW LAMPS.

LAMPS: TWO 32 WATT LINEAR FLUORESCENT T8 LAMPS RATED AT 2850 LUMENS EACH.

LAMP CATALOG NUMBER: PHILIPS F32T8/TL841

BALLAST: ONE UNIVERSAL LIGHTING TECHNOLOGIES B232I120RH-A

MOUNTING: PENDENT

LUMEN TO CANDELA RATIO USED = 9.18

TOTAL INPUT WATTS = 58.0 AT 120.0 VOLTS

THE 0 DEGREE PLANE IS PARALLEL WITH THE LAMPS.

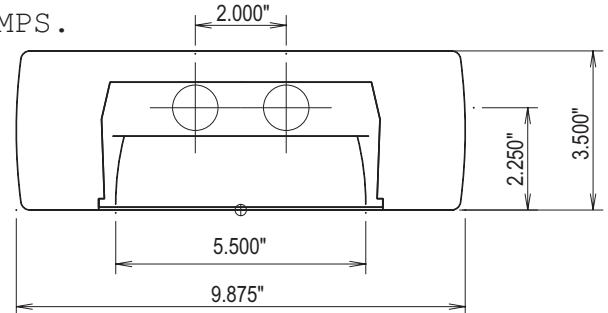
#07235

CANDELA DISTRIBUTION

	0.0	22.5	45.0	67.5	90.0
0	829	829	829	829	829
5	829	845	870	885	895
15	799	897	1040	1129	1160
25	739	943	1203	1346	1385
35	650	957	1234	1390	1442
45	525	916	1142	1229	1284
55	377	730	890	1009	1098
65	165	347	458	482	491
75	19	31	40	41	38
85	8	9	9	9	9
90	0	0	0	0	0

FLUX

84
288
527
723
807
746
400
48
7



ZONAL LUMEN SUMMARY

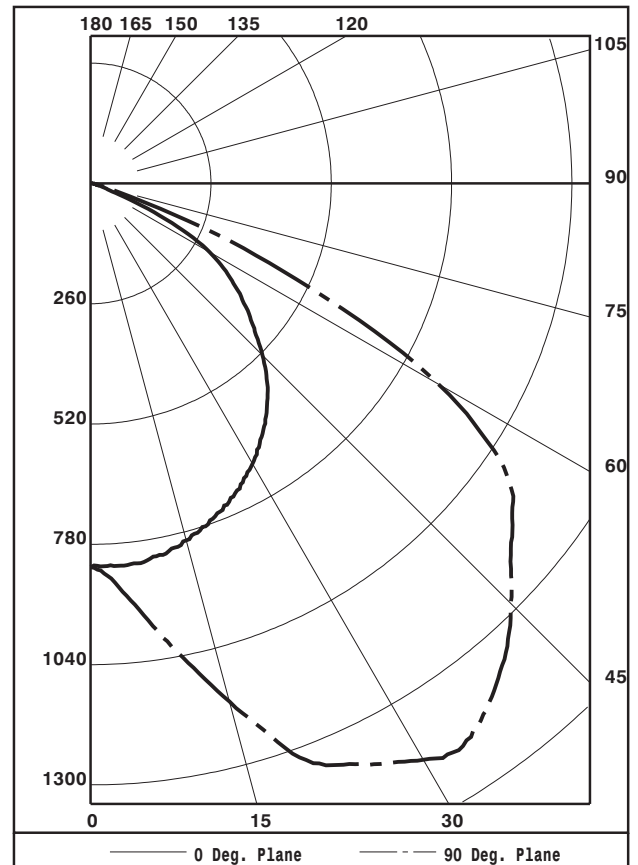
ZONE	LUMENS	%LAMP	%FIXT
0- 30	899	15.8	24.8
0- 40	1623	28.5	44.7
0- 60	3176	55.7	87.5
0- 90	3631	63.7	100.0
90-180	0	0.0	0.0
0-180	3631	63.7	100.0

TOTAL LUMINAIRE EFFICIENCY: 63.7%

CIE TYPE: DIRECT  
 PLANE: 0-DEG 90-DEG  
 SPACING CRITERIA: 1.3 2.1  
 SHIELDING ANGLES: 21 23  
 LUMINOUS LENGTH: 48.000 5.500

LUMINANCE IN CANDELA PER SQUARE METER

ANGLE IN DEG	AVERAGE 0-DEG	AVERAGE 45-DEG	AVERAGE 90-DEG
0	4867.	4867.	4867.
45	4359.	9481.	10660.
55	3859.	9110.	11238.
65	2292.	6362.	6821.
75	431.	907.	862.
85	539.	606.	606.



TESTED BY HERSCHEL SCHRECK  
 CHECKED BY MIKE GRATHER



LTL NUMBER: 07235

DATE: 02-19-2003

PREPARED FOR: PRECISION ARCHITECTURAL LIGHTING

COEFFICIENTS OF UTILIZATION - ZONAL CAVITY METHOD
EFFECTIVE FLOOR CAVITY REFLECTANCE 0.20

Table with 19 columns (RC, RW, 80, 70, 50, 30, 10, 0) and 11 rows (0-10) showing utilization coefficients.

CANDELA DISTRIBUTION

Table with 6 columns (0.0, 22.5, 45.0, 67.5, 90.0) and 17 rows (0-90) showing candela values.

ZONAL LUMEN SUMMARY

Table with 3 columns (0-5, 5-10, 10-15, 15-20, 20-25, 25-30, 30-35, 35-40, 40-45, 45-50, 50-55, 55-60, 60-65, 65-70, 70-75, 75-80, 80-85, 85-90) and 17 rows showing lumen summary.

THIS TEST WAS CONDUCTED USING RELATIVE PHOTOMETRY TECHNIQUES ACCORDING TO STANDARD IESNA PROCEDURES. THE USER MUST THEREFORE USE CAUTION IN THE FOLLOWING SITUATIONS: 1) THIS TEST WAS PERFORMED USING A SPECIFIC BALLAST/LAMP COMBINATION. EXTRAPOLATION OF THESE DATA FOR OTHER BALLAST/LAMP COMBINATIONS MAY PRODUCE ERRONEOUS RESULTS. 2) ACCORDING TO IESNA PROCEDURES, THE BALLAST(S) AND LAMP(S) ARE PRESUMED TO PRODUCE 100% OF RATED OUTPUT. AN APPROPRIATE BALLAST FACTOR MUST BE APPLIED TO THE LUMEN OUTPUT RATINGS AND LUMINOUS INTENSITY VALUES GIVEN. 3) THIS TEST WAS CONDUCTED IN A CONTROLLED LABORATORY ENVIRONMENT WHERE THE AMBIENT TEMPERATURE WAS HELD AT 25 C 1 C. FIELD PERFORMANCE MAY DIFFER PARTICULARLY IN REGARDS TO CHANGE IN LUMINOUS OUTPUT AS A RESULT OF DIFFERENCE IN AMBIENT TEMPERATURE AND METHOD OF MOUNTING THE LUMINAIRE.



LUMINAIRE TESTING LABORATORY, INC.



905 Harrison Street · Allentown, PA 18103 · (610) 770-1044 · Fax (610) 770-8912 · www.LuminaireTesting.com

INITIAL ILLUMINATION OF 50 FOOTCANDLES USING LTL TEST NUMBER 07235  
 LUMINAIRE SUSPENSION LENGTH = 1.5  
 WORKING PLANE HEIGHT = 2.50  
 FLOOR REFLECTANCE = 20

ROOM HT		8				9				10				12			
CEIL RF		80		70		80		70		80		70		80		70	
WALL RF		70	50	50	30	70	50	50	30	70	50	50	30	70	50	50	30
WIDTH	LENGTH																
10.	10.	2	2	2	3	2	3	3	3	2	3	3	3	3	3	4	4
10.	15.	3	3	3	3	3	3	3	4	3	4	4	4	4	4	4	5
15.	20.	5	5	5	5	5	5	5	6	5	6	6	6	6	6	7	7
15.	30.	7	7	7	8	7	7	8	8	7	8	8	9	8	9	9	10
20.	20.	6	6	6	7	6	7	7	7	6	7	7	8	7	8	8	9
20.	30.	8	9	9	9	9	9	9	10	9	10	10	11	10	11	11	12
20.	40.	11	11	12	12	11	12	12	13	12	12	13	13	12	14	14	15
20.	60.	16	17	17	18	16	17	18	18	17	18	18	19	18	19	20	21
30.	30.	12	13	13	13	12	13	13	14	13	14	14	15	13	15	15	16
30.	40.	16	16	17	17	16	17	17	18	16	17	18	19	17	19	19	20
30.	50.	19	20	20	21	20	21	21	22	20	21	22	23	21	23	23	24
30.	60.	23	24	24	25	23	24	25	26	24	25	26	27	25	27	27	29
60.	60.	44	45	46	47	45	46	47	48	45	47	48	49	46	49	50	52
60.	80.	58	60	61	62	59	61	62	63	60	62	63	65	61	64	65	67
60.	100.	73	74	76	77	73	75	77	78	74	76	78	80	76	78	80	83
100.	100.	120	121	124	125	120	122	125	127	121	124	127	129	123	127	129	133

QUANTITY OF LUMINAIRES