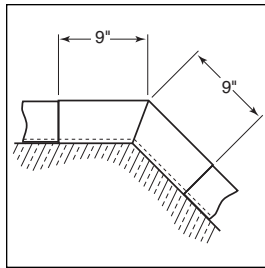


Catalog Number	Type
Project Name	

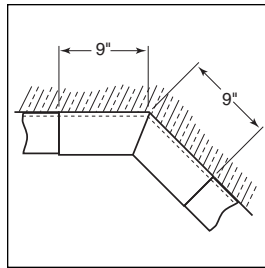
Paladia Perimeter Series

Corner Fitting Specifications

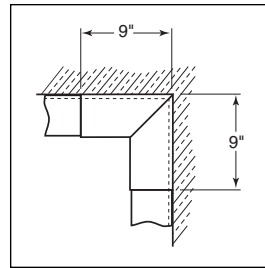
S P E C I F I C A T I O N S



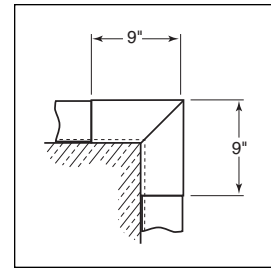
135° Outside Corner



135° Inside Corner



90° Inside Corner



90° Outside Corner

Paladia Perimeter Series 3" x 4" wall mounted indirect.

Construction Mitered and welded .060 thick extruded aluminum.

Finish Standard and premium finishes are baked powder coat electrostatically applied (2.0 mil. minimum thickness) to assure aesthetics and durability.

H O W T O O R D E R

Standard fittings are 135° Outside Corner, 135° Inside Corner, 90° Outside Corner, 90° Inside Corner.

Catalog Logic

All corner fittings should be specified and ordered as follows:

<p>Series</p> <p>PPSQ Square Fascia</p> <p>PPST Stepped Fascia</p> <p>PPCL Classical Fascia</p> <p>PPRD Round Fascia</p>	<p>Mounting</p> <p>W = Wall</p>
---	---

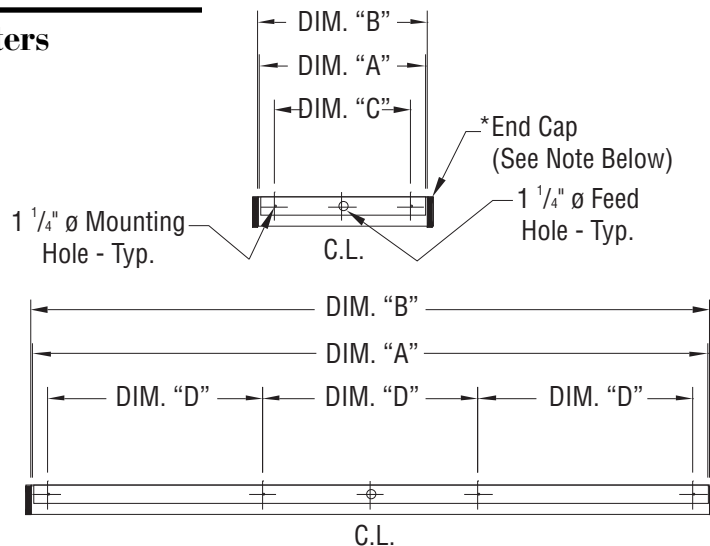
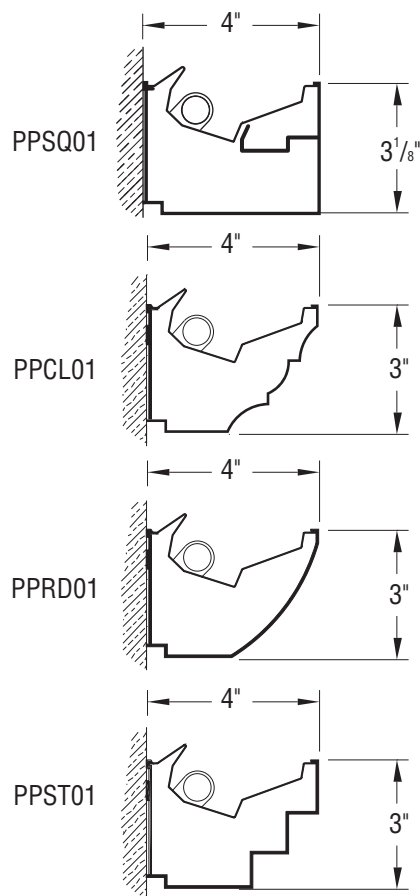
PPCL - C90I - W - F01M

<p>Corner Type</p> <p>C90I 90° Inside</p> <p>C90O 90° Outside</p> <p>C135I 135° Inside</p> <p>C135O 135° Outside</p>	<p>Standard Finishes</p> <p>F01M Matte White</p> <p>Premium Finishes</p> <p>F01G Gloss White</p> <p>F02 Ivory</p> <p>F03 Stonewash</p> <p>F04 Camel</p> <p>F05 Gray Day</p> <p>F06 Pebble Beach</p> <p>F07 Steel</p> <p>F08 Gray Seal</p> <p>F09 Mocha</p> <p>F10 Bronzed</p> <p>F11 Black</p> <p>F12 Ultrasonic Clear</p> <p>F13 Merlot</p> <p>F14 Red Skies</p> <p>F15 Lemon</p> <p>F16 Forest Hunter</p> <p>F17 Olive</p> <p>F18 Khaki</p> <p>F19 Heather Green</p> <p>F20 Blue Print</p> <p>F21 Reflex Blue</p> <p>F22 Navy</p> <p>FCC Custom Color</p>
---	---



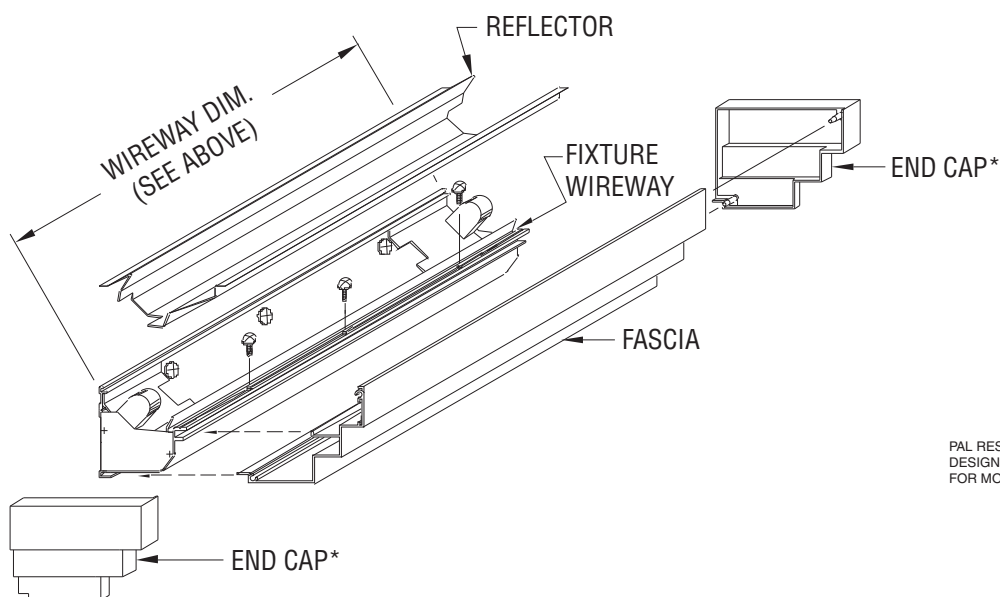
Paladia Perimeter Series (T8 Lamps)

Standard Fixture Lengths and Mounting Centers



Dim "A" (Wireway Length)	Dim "B" *(Fascia Length)	Mounting Centers	
		Dim. "C"	Dim. "D"
48" (Nom. 4 Ft.)	48 1/4"	42"	—
96" (Nom. 8 Ft.)	96 1/4"	—	30"
144" (Nom. 12 Ft.)	144 1/4"	—	42"

*Does not include fascia end caps.



PAL RESERVES THE RIGHT TO CHANGE PRODUCT DESIGN AND SPECIFICATIONS. CONTACT FACTORY FOR MOST RECENT PRODUCT INFORMATION.

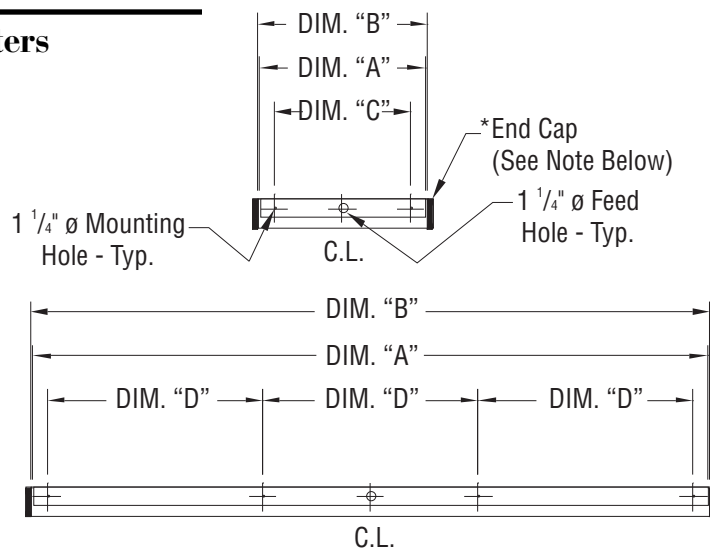
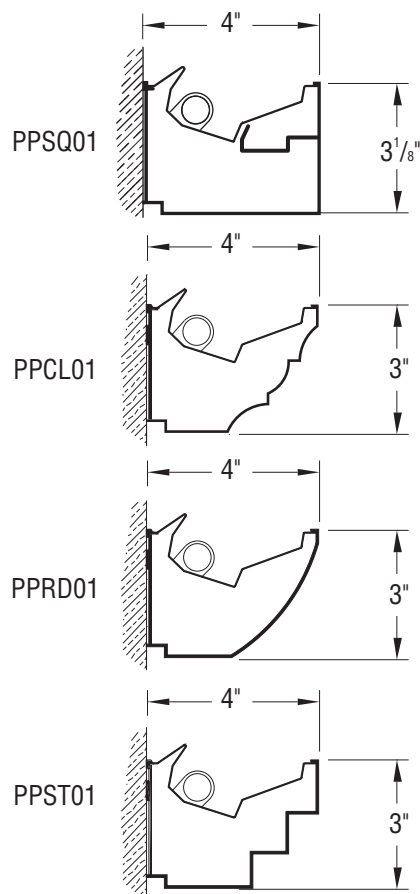
***Note:** End caps are used whenever the fixture or fixture row does not terminate against a wall or into a corner. Add 5/8" per End Cap to the overall length of fixture or fixture row. (1 1/4" total for 2 End Caps)



Precision Architectural Lighting 4830 Timber Creek Drive Houston, Texas 77017
Tel 713.946.4343 Fax 713.946.4441 www.pal-lighting.com

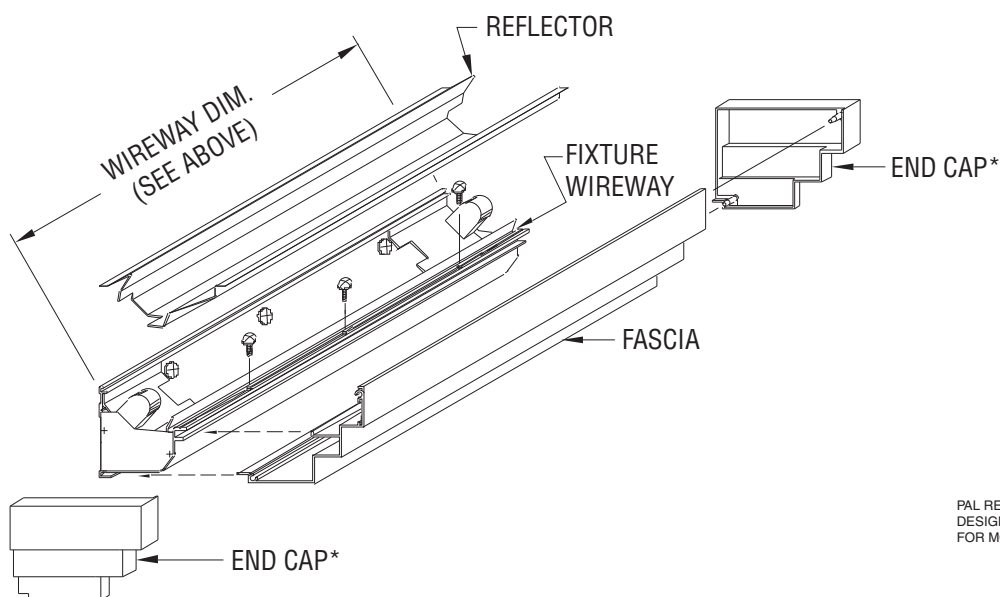
Paladia Perimeter Series (T5 and T5HO Lamps)

Standard Fixture Lengths and Mounting Centers



Dim "A" (Wireway Length)	Dim "B" *(Fascia Length)	Mounting Centers	
		Dim. "C"	Dim. "D"
46" (Nom. 4 Ft.)	46 1/4"	40"	—
92" (Nom. 8 Ft.)	92 1/4"	—	28"
138" (Nom. 12 Ft.)	138 1/4"	—	40"

*Does not include fascia end caps.



PAL RESERVES THE RIGHT TO CHANGE PRODUCT DESIGN AND SPECIFICATIONS. CONTACT FACTORY FOR MOST RECENT PRODUCT INFORMATION.

***Note:** End caps are used whenever the fixture or fixture row does not terminate against a wall or into a corner.
Add 5/8" per End Cap to the overall length of fixture or fixture row. (1 1/4" total for 2 End Caps)



Precision Architectural Lighting 4830 Timber Creek Drive Houston, Texas 77017
Tel 713.946.4343 Fax 713.946.4441 www.pal-lighting.com