

Microlinea™ Suspended Series 5 Wall Wash - Fluorescent

(Nominal 4" Luminous Aperture)

Catalog Number	Type
Project Name	



MLS5WW

Suspended or Ceiling Mount
5 1/4" x 3 11/16" Direct
(T5 or T5HO Lamps)

Utilizing a single T5 or T5HO lamp and a precisely designed three-piece interlocking reflector system, the wall wash optics provide uniform illumination on vertical surfaces.

See Photometric section for photometric performance.
See next page for Lengths and Mounting Centers.

S P E C I F I C A T I O N S

Housing

One piece .090" thick extruded aluminum. Die-cast aluminum end caps are secured with no visible fasteners. Standard nominal lengths are 4', 8' and 12'.

Optical Controls

- Open
- (CAE) Clear Acrylic Enclosure (Snap-in)

Finish

Standard and premium finishes are baked powder coat electrostatically applied (2.0 mil minimum thickness) to assure aesthetics and durability. Standard finish for stems and canopies is white.

Reflector

Three piece extruded aluminum assembly. Upper and lamp side extrusions are specular. Wall side extrusion is baked "flat black" power coat to minimize glare to room side.

Ballast

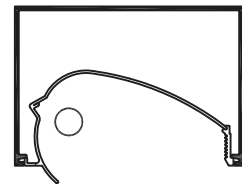
- Standard ballasts for T5 and T5HO lamps are UL/CUL listed, Class P, HPF, electronic, universal 120/277volt, programmed rapid start with <10% THD.

Circuitry

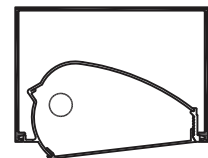
All fixtures are factory pre-wired for a single circuit.

Certification

All fixtures are UL/CUL listed for use in 'Dry Applications'. 'Damp Location' is optional.



MLS5WW
T5 or T5HO



Shown with optional Clear
Acrylic Enclosure (CAE)

Series
MLS5WW

Mountings

- CT = Cable (15/16" Tbar) Fully Adjustable (36" Standard)
- CN = Cable (Non-Tbar) Fully Adjustable (36" Standard)
- P = Rigid Stem (Up to 48" Standard)
- K = Swivel Stem (Up to 48" Standard)
- J = Ceiling

MLS5WW-4-CT-F01M-120-T5HO-[]

Standard Fixture Lengths
4', 8' and 12'

Standard Finishes

- | | |
|-------------------------|----------------------|
| F01M Matte White | F12 Ultrasonic Clear |
| Premium Finishes | F13 Merlot |
| F01G Gloss White | F14 Red Skies |
| F02 Ivory | F15 Lemon |
| F03 Stonewash | F16 Forest Hunter |
| F04 Camel | F17 Olive |
| F05 Gray Day | F18 Khaki |
| F06 Pebble Beach | F19 Heather Green |
| F07 Steel | F20 Blue Print |
| F08 Gray Seal | F21 Reflex Blue |
| F09 Mocha | F22 Navy |
| F10 Bronzed | FCC Custom Color |
| F11G Gloss Black | |
| F11M Matte Black | |

Voltage

- 120
- 277
- 347

Lamp Type

- T5
- T5HO

Options

- | | |
|---|--|
| NLCKT
Night Light Circuit
(Common Neutral) | Dim
Dimming |
| EMCKT
Emergency Circuit
(Separate Hot & Neutral) | FS
Fused Ballasts |
| EBPL
Emergency Battery Pack
(635-700 Lumens) | GTD
Generator Transfer
Device |
| EBPH
Emergency Battery Pack
(975-1325 Lumens) | DL
Damp Location |
| | CAE
Clear Acrylic Enclosure |



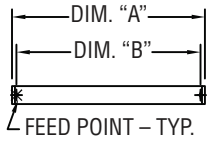
MLS5WW - Wall Wash

Suspended or Ceiling Mount

(T5 or T5H0 Lamps)

Standard Fixture Lengths and Mounting Centers

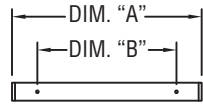
Cable Mount



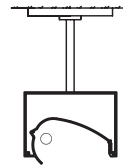
FIXTURE LENGTH	MTG. CENTERS
DIM. "A"	DIM. "B"
48 7/8"	45 7/8"
95 5/8"	92 5/8"
142 3/8"	139 3/8"



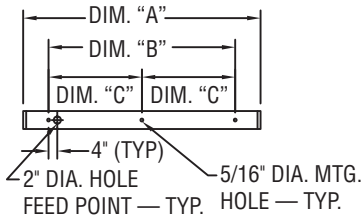
Stem Mount



FIXTURE LENGTH	MTG. CENTERS
DIM. "A"	DIM. "B"
48 7/8"	34 7/8"
95 5/8"	81 5/8"
142 3/8"	128 3/8"



Direct Ceiling Mount



FIXTURE LENGTH	MOUNTING CENTERS	
DIM. "A"	DIM. "B"	DIM. "C"
48 7/8"	34 7/8"	—
95 5/8"	81 5/8"	—
142 3/8"	128 3/8"	64 3/16"



PAL RESERVES THE RIGHT TO CHANGE PRODUCT DESIGN AND SPECIFICATIONS. CONTACT FACTORY FOR MOST RECENT PRODUCT INFORMATION.



Suspended/Ceiling

MLS5-D1

Direct - T5 Lamp

Semi-Specular Aluminum Parabolic Baffle

Catalog Number: MLS5-D1-4'-X-PB-F01M-120-T5

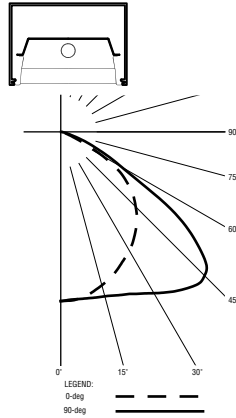
Report Number: ITL#76159.ies

Luminaire Description: Extruded Aluminum Housing with White Aluminum Reflector and Semi-Specular Parabolic Baffle

Lamp: One Sylvania FP28T5/841/ECO
Rated at 2600 Lumens

Total Luminaire Efficiency = 77.1%

0% Up 100% Down



MLS5-D1

Direct - T8 Lamp

Semi-Specular Aluminum Parabolic Baffle

Catalog Number: MLS5-D1-4'-X-PB-F01M-120-T8

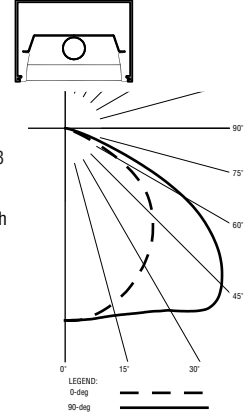
Report Number: ITL#77262.ies

Luminaire Description: Extruded Aluminum Housing with White Aluminum Reflector and Semi-Specular Parabolic Baffle

Lamp: One Sylvania F032T8/835
Rated at 2950 Lumens

Total Luminaire Efficiency = 67.7%

0% Up 100% Down



MLS5-D1

Direct - T5 Lamp

Translucent White Acrylic Lens

Catalog Number: MLS5-D1-4'-X-TWA-F01M-120-T5

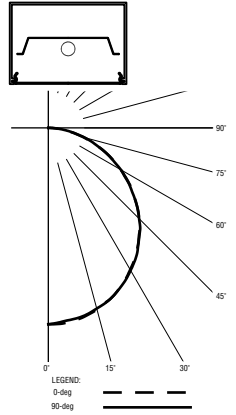
Report Number: ITL#76161.ies

Luminaire Description: Extruded Aluminum Housing with White Aluminum Reflector and Translucent White Acrylic Lens

Lamp: One Sylvania FP28T5/841/ECO
Rated at 2600 Lumens

Total Luminaire Efficiency = 73.1%

0% Up 100% Down



MLS5-D1

Direct - T8 Lamp

Translucent White Acrylic Lens

Catalog Number: MLS5-D1-4'-X-TWA-F01M-120-T8

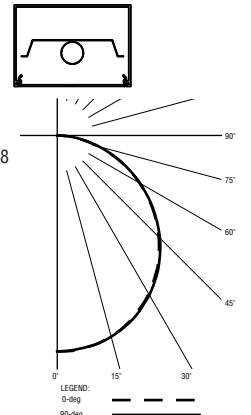
Report Number: ITL#77260.ies

Luminaire Description: Extruded Aluminum Housing with White Aluminum Reflector and Translucent White Acrylic Lens

Lamp: One Sylvania F032T8/835
Rated at 2950 Lumens

Total Luminaire Efficiency = 58.1%

0% Up 100% Down



MLS5WW

Direct Wall Wash - T5 Lamp

Open Wall Wash Optical Control

Catalog Number: MLS5WW-4'-X-F01M-120-T5

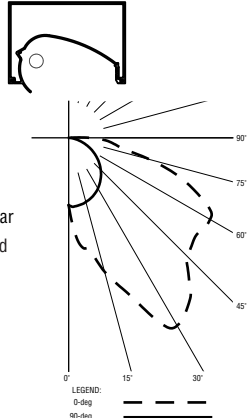
Report Number: ITL#79784.ies

Luminaire Description: Extruded Alum. Housing w/Specular Upper & Lamp Side Extrusions and Black Wall Side Extrusion

Lamp: One Sylvania FP28T5/841/ECO
Rated at 2600 Lumens

Total Luminaire Efficiency = 70.5%

0% Up 100% Down



MLS5-D1

Direct - T8 Lamp

Linear Prismatic Acrylic Lens

Catalog Number: MLS5-D1-4'-X-LP-F01M-120-T8

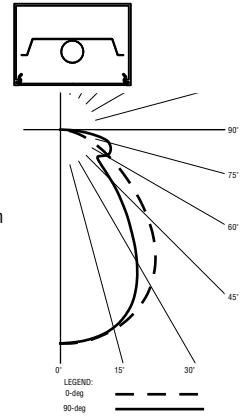
Report Number: ITL#77259.ies

Luminaire Description: Extruded Aluminum Housing with White Aluminum Reflector and Linear Prismatic Acrylic Lens

Lamp: One Sylvania F032T8/835
Rated at 2950 Lumens

Total Luminaire Efficiency = 65.0%

0% Up 100% Down



MLS5ASY

Direct Asymmetric - T5 Lamp

Semi-Specular Aluminum Parabolic Baffle

Catalog Number: MLS5ASY-4'-X-PB-F01M-120-T5

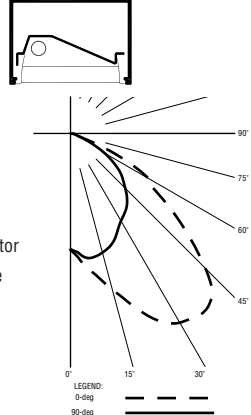
Report Number: ITL#78202.ies

Luminaire Description: Extruded Aluminum Housing with Specular Asymmetric Alum. Reflector and Semi-Specular Parabolic Baffle

Lamp: One Sylvania FP28T5/841/ECO
Rated at 2600 Lumens

Total Luminaire Efficiency = 71.0%

0% Up 100% Down



MLS5ASY

Direct Asymmetric - T8 Lamp

Semi-Specular Aluminum Parabolic Baffle

Catalog Number: MLS5ASY-4'-X-PB-F01M-120-T8

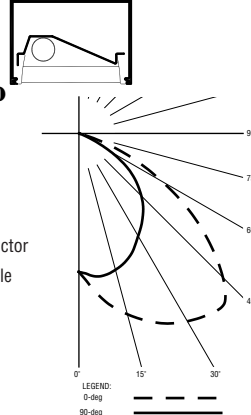
Report Number: ITL#78205.ies

Luminaire Description: Extruded Aluminum Housing with Specular Asymmetric Alum. Reflector and Semi-Specular Parabolic Baffle

Lamp: One Sylvania F032T8/835
Rated at 2950 Lumens

Total Luminaire Efficiency = 60.6%

0% Up 100% Down



For more information, visit our website at www.pal-lighting.com



Precision Architectural Lighting 4830 Timber Creek Drive Houston, Texas 77017
Tel 713.946.4343 Fax 713.946.4441 www.pal-lighting.com



Made in America