

REPORT NUMBER: ITL71738

PAGE: 1 OF 4

ISSUE DATE: 02/29/12

PREPARED FOR: PRECISION ARCHITECTURAL LIGHTING

CATALOG NUMBER: MLR3-1-4-XX-PB-120-T8

LUMINAIRE: FABRICATED METAL HOUSING WITH WHITE PAINTED GENERAL INTERIOR FINISH, FORMED WHITE PAINTED METAL REFLECTOR, FABRICATED SEMI-SPECULAR METAL PARABOLIC 31-CELL LOUVER. LAMP IS MOUNTED OBLIQUELY ACROSS LUMINOUS OPENING.

LAMP: ONE 32-WATT T-8 FO32/835 LINEAR FLUORESCENT.

BALLAST: UNIVERSAL B232IUNV-C

MOUNTING: RECESSED

THE 0 DEGREE PLANE IS PARALLEL WITH THE LUMINAIRE LENGTH.

TOTAL INPUT WATTS = 33.0 AT 120.0 VOLTS

LUMEN TO CANDELA RATIO USED = 9.17

REPORT IS BASED ON 2950 LUMENS PER LAMP.

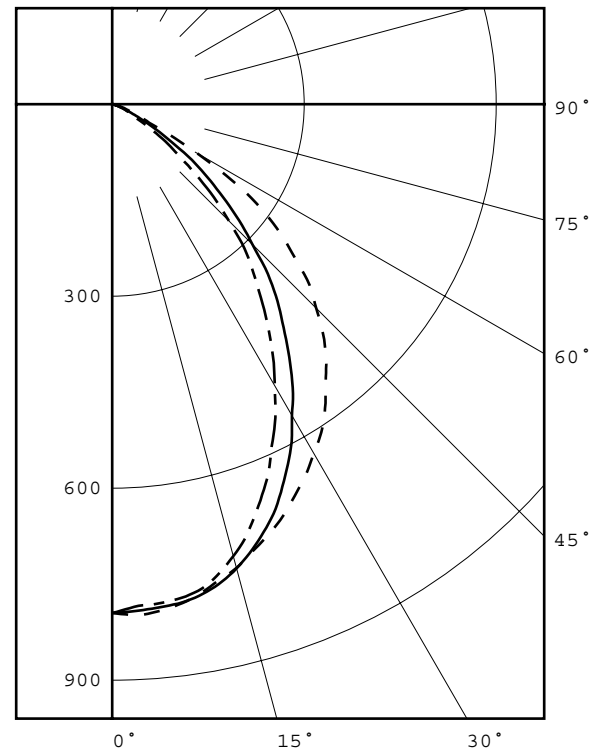
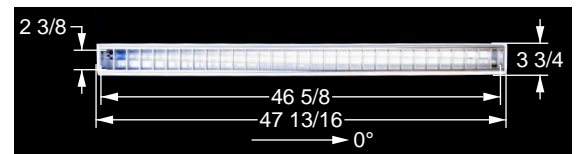
CANDELA DISTRIBUTION						FLUX
	0.0	22.5	45.0	67.5	90.0	
0	795	795	795	795	795	
5	796	795	790	784	784	75
15	750	753	751	739	731	209
25	675	678	640	606	590	293
35	580	560	482	438	425	309
45	451	401	310	269	258	258
55	284	225	152	107	101	151
65	53	37	36	30	25	43
75	13	10	7	8	7	10
85	2	2	1	1	0	2
90	0	0	0	0	0	

ZONAL LUMEN SUMMARY			
ZONE	LUMENS	%LAMP	%FIXT
0- 30	578	19.6	42.8
0- 40	887	30.1	65.7
0- 60	1295	43.9	96.0
0- 90	1349	45.7	100.0
90-180	0	0.0	0.0
0-180	1349	45.7	100.0

TOTAL LUMINAIRE EFFICIENCY = 45.7 %

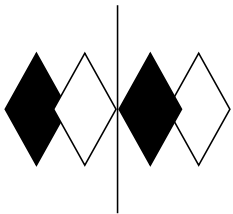
CIE TYPE - DIRECT
PLANE : 0-DEG 90-DEG
SPACING CRITERIA : 1.19 1.02
SHIELDING ANGLES : 30 48
LUMINOUS LENGTH : 46.625 2.375

LUMINANCE DATA IN CANDELA/SQ M			
ANGLE IN DEG	AVERAGE 0-DEG	AVERAGE 45-DEG	AVERAGE 90-DEG
45	8928.	6137.	5107.
55	6931.	3709.	2465.
65	1755.	1192.	828.
75	703.	379.	379.
85	321.	161.	0.



LEGEND:
0-deg -----
45-deg _____
90-deg - . - . - .

Checked B. HYRE
Approved R. BEATTIE
Lighting Engineer



itl boulder
THE LIGHT CENTER OF THE INDUSTRY SINCE 1955

INDEPENDENT TESTING LABORATORIES, INC.
 3386 LONGHORN ROAD, BOULDER, CO 80302 USA

PHONE: (303)442-1255 • FAX: (303)449-5274 • E-MAIL: itl@itlboulder.com • WEBSITE: www.itlboulder.com

REPORT NUMBER: ITL71738

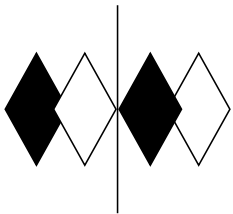
PAGE: 2 OF 4

ISSUE DATE: 02/29/12

PREPARED FOR: PRECISION ARCHITECTURAL LIGHTING

CANDELA DISTRIBUTION

	0.0	22.5	45.0	67.5	90.0
0.0	795	795	795	795	795
2.5	799	798	793	786	786
5.0	796	795	790	784	784
7.5	789	788	787	781	780
10.0	778	770	780	774	772
12.5	763	766	768	760	755
15.0	750	753	751	739	731
17.5	732	738	729	714	703
20.0	715	719	704	681	668
22.5	697	700	675	645	633
25.0	675	678	640	606	590
27.5	654	651	605	561	552
30.0	630	624	562	522	508
32.5	608	595	525	481	468
35.0	580	560	482	438	425
37.5	548	525	440	395	382
40.0	520	487	402	350	343
42.5	488	449	360	311	306
45.0	451	401	310	269	258
47.5	418	358	269	230	216
50.0	372	316	226	187	170
52.5	331	268	188	144	130
55.0	284	225	152	107	101
57.5	224	180	110	81	70
60.0	154	130	80	58	43
62.5	84	83	53	39	33
65.0	53	37	36	30	25
67.5	35	28	23	23	19
70.0	24	20	14	16	13
72.5	18	14	10	11	10
75.0	13	10	7	8	7
77.5	9	7	5	5	5
80.0	7	5	3	3	3
82.5	3	3	2	3	3
85.0	2	2	1	1	0
87.5	1	0	0	0	0
90.0	0	0	0	0	0



itl boulder
THE LIGHT CENTER OF THE INDUSTRY SINCE 1955

INDEPENDENT TESTING LABORATORIES, INC.
3386 LONGHORN ROAD, BOULDER, CO 80302 USA

PHONE: (303)442-1255 • FAX: (303)449-5274 • E-MAIL: itl@itlboulder.com • WEBSITE: www.itlboulder.com

REPORT NUMBER: ITL71738

PAGE: 3 OF 4

ISSUE DATE: 02/29/12

PREPARED FOR: PRECISION ARCHITECTURAL LIGHTING

5-DEGREE

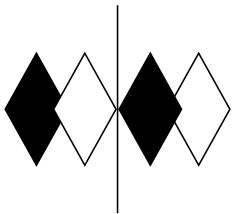
ZONAL LUMEN SUMMARY

0- 5	19.
5- 10	56.
10- 15	90.
15- 20	119.
20- 25	140.
25- 30	153.
30- 35	157.
35- 40	152.
40- 45	140.
45- 50	118.
50- 55	91.
55- 60	60.
60- 65	30.
65- 70	13.
70- 75	7.
75- 80	3.
80- 85	1.
85- 90	0.

10-DEGREE

ZONAL LUMEN SUMMARY

0- 10	75.
0- 20	284.
0- 30	578.
0- 40	887.
0- 50	1144.
0- 60	1295.
0- 70	1337.
0- 80	1347.
0- 90	1349.
0-100	1349.
0-110	1349.
0-120	1349.
0-130	1349.
0-140	1349.
0-150	1349.
0-160	1349.
0-170	1349.
0-180	1349.



REPORT NUMBER: ITL71738

PAGE: 4 OF 4

ISSUE DATE: 02/29/12

PREPARED FOR: PRECISION ARCHITECTURAL LIGHTING

COEFFICIENTS OF UTILIZATION - ZONAL CAVITY METHOD

EFFECTIVE FLOOR CAVITY REFLECTANCE 0.20

RC	80				70				50			30			10			0
	70	50	30	10	70	50	30	10	50	30	10	50	30	10	50	30	10	0
0	54	54	54	54	53	53	53	53	51	51	51	49	49	49	47	47	47	46
1	51	50	48	47	50	49	47	46	47	46	45	45	44	43	43	43	42	41
2	48	45	42	40	47	44	42	40	42	41	39	41	40	38	40	39	37	37
3	44	41	38	35	43	40	37	35	39	36	34	37	35	34	36	35	33	32
4	41	37	34	31	40	36	33	31	35	33	31	34	32	30	33	31	30	29
5	38	34	30	28	38	33	30	27	32	29	27	31	29	27	31	28	27	26
6	36	31	27	25	35	30	27	25	30	27	24	29	26	24	28	26	24	23
7	34	28	25	22	33	28	25	22	27	24	22	27	24	22	26	24	22	21
8	31	26	23	20	31	26	22	20	25	22	20	25	22	20	24	22	20	19
9	29	24	21	19	29	24	21	18	23	20	18	23	20	18	22	20	18	18
10	28	22	19	17	27	22	19	17	22	19	17	21	19	17	21	19	17	16

ALL CANDELA, LUMENS, LUMINANCE, COEFFICIENT OF UTILIZATION AND VCP VALUES IN THIS REPORT ARE BASED ON RELATIVE PHOTOMETRY WHICH ASSUMES A BALLAST FACTOR OF 1.000. ANY CALCULATIONS PREPARED FROM THESE DATA SHOULD INCLUDE AN APPROPRIATE BALLAST FACTOR.