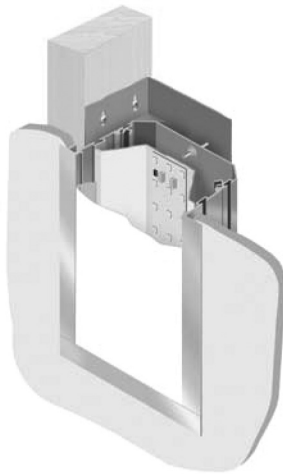
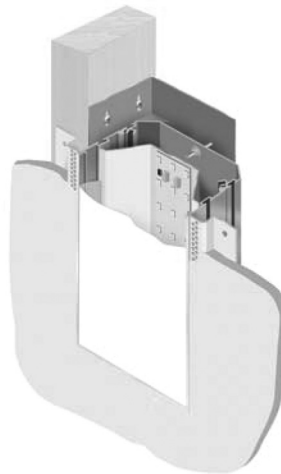


# Microlinea™ Recessed Series 5 - LED

(4 7/8" Luminous Aperture)



Vertical Drywall Overlap Flange



Vertical Drywall Spackle Flange

## S P E C I F I C A T I O N S

### Housing

Three piece extruded aluminum available in single sections up to 8' long in 1' increments. Standard flange finish is satin white.

### Optical Controls

Clear co-extruded 100% D.R. acrylic lens with high transmittance diffusing insert.

### Reflector/Heat Sink

.060 thick die-formed aluminum finished with a high reflectance white enamel.

### Light Engine

Osram-Sylvania LED modules available for 3000K, 3500K and 4000K CCT:

#### HO - High Output

\*3975 Total Delivered Lms. at 49 System Watts (Values per 4' using 3500K LED modules)

#### MO - Medium Output

\*2307 Total Delivered Lms. at 26 System Watts (Values per 4' using 3500K LED modules)

\*Due to continued advancement in LED technology, lumen performance is subject to change. Please visit our website for the most up-to-date information.

### Driver

Osram-Sylvania "Optotronic" power supply is UL/CUL recognized, 0-10V dimming available, 120-277 universal voltage.

### Circuitry

All fixtures are factory pre-wired for a single circuit. Provision for multiple switching/circuiting is optional.

### Wiring

All fixtures intended for continuous rows are provided with factory installed quick-connect wiring.

### Integral Controls

Contact factory for daylight and/or occupancy sensor controls.

### Certification

All fixtures are ETL listed for use in 'Dry Applications'. 'Damp Location' is optional.

### Nominal Lengths: 2', 3', 4', 6', & 8'

For continuous rows of 8' or more, specify nominal row length in 1' increments. See Microlinea Row Guide Section.

### Mountings

VOF = Vertical Wall Mount Overlap Flange  
VSF5 = Vertical Wall Mount Spackle Flange w/5/8" Drywall  
VSF1 = Vertical Wall Mount Spackle Flange w/1/2" Drywall

### Series

MLR5

## MLR5-HO-K40-4'-VOF-LOH-120-[ ]

### Lumen Output

**HO** - High Output  
\*3975 Total Lumens - 81 Lm/W  
**MO** - Medium Output  
\*2307 Total Lumens - 90 Lm/W

\*Lumen ratings per 4' section (3500K)

### CCT

**K30**  
3000 Kelvin  
**K35**  
3500 Kelvin  
**K40**  
4000 Kelvin

### Optical Controls

**LOH**  
LED Optimized High Transmittance Lens

### Voltage

120  
277

### Options

**NLCKT**  
Night Light Circuit (Common Neutral)  
**EMCKT**  
Emergency Circuit (Separate Hot & Neutral)  
**EBPL**  
Emergency Battery Pack (Consult Factory for Specific Application)

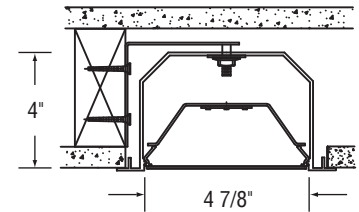
**Dim**  
Dimming  
**FS**  
Fused Drivers  
**GTD**  
Generator Transfer Device  
**CP**  
Chicago Plenum  
**DL**  
Damp Location

Catalog Number

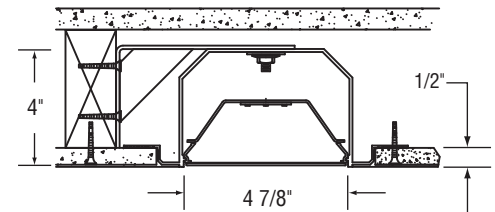
Type

Project Name

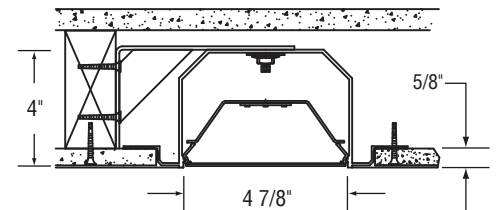
## Vertical Wall Mount 1/2" or 5/8" Thick Drywall



MLR5-HO-VOF  
MLR5-MO-VOF  
Vertical Drywall Overlap Flange



MLR5-HO-VSF1  
MLR5-MO-VSF1  
Vertical Drywall Spackle Flange



MLR5-HO-VSF5  
MLR5-MO-VSF5  
Vertical Drywall Spackle Flange



# Recessed MLR5-HO-K35-LOH

High Output

## LED Optimized High Transmittance Lens

**Catalog Number:** MLR5-HO-K35-4'-X-LOH-120

**Report Number:** ITL#77524.ies

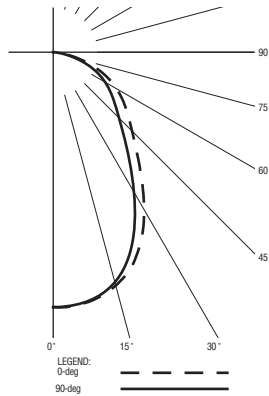
**Luminaire Description:** Extruded Aluminum Housing with White Aluminum Reflector and LED Optimized Acrylic Lens with Insert

**LED Module:** Multiple White Low-Power Light Emitting Diodes (LEDs) in a uniform grid pattern.

Total Luminaire Efficacy = 81.3 Lm/W

0% Up 100% Down

Color Rendering Index (CRI) = 82



## ZONAL LUMEN SUMMARY

Zone	Lumens	%Fixture
0- 30	1433	36.1
0- 40	2137	53.8
0- 60	3305	83.1
0- 90	3975	100.0
90- 180	0	0.0
0- 180	3975	100.0

## CANDELA DISTRIBUTION

	0.0	22.5	45.0	67.5	90.0
0	1999	1999	1999	1999	1999
5	1992	1977	1990	1994	1987
15	1894	1875	1888	1881	1867
25	1630	1599	1573	1533	1510
35	1207	1174	1117	1070	1044
45	874	851	807	755	730
55	670	649	608	566	550
65	469	451	423	394	383
75	228	217	203	186	180
85	29	29	27	24	24
90	0	0	0	0	0

Precision Architectural Lighting

**LED lighting facts**  
A Program of the U.S. DOE

---

**Light Output (Lumens)** 3975  
**Watts** 48.9  
**Lumens per Watt (Efficacy)** 81

---

**Color Accuracy**  
Color Rendering Index (CRI) 82

---

**Light Color**  
Correlated Color Temperature (CCT) 3491 (Bright White)

Warm White | Bright White | Daylight  
2700K | 3000K | 4500K | 6500K

---

**Warranty\*\*** Yes

All results, except LED Lumen Maintenance, are according to IESNA LM-79-2008: Approved Method for the Electrical and Photometric Testing of Solid-State Lighting. The U.S. Department of Energy (DOE) verifies product test data and results.

\*\* See [www.lightingfacts.com/products](http://www.lightingfacts.com/products) for details.

Registration Number: 1NRP-QYP1GR (7/29/2013)  
Model Number: MLR5-HO-K35-4-XX-LOH-120  
Type: Surface-mounted or recessed troffers

# MLR5-MO-K35-LOH

Medium Output

## LED Optimized High Transmittance Lens

**Catalog Number:** MLR5-MO-K35-4'-X-LOH-120

**Report Number:** ITL#77523.ies

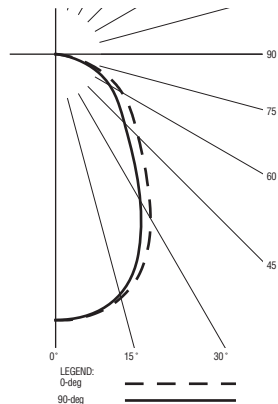
**Luminaire Description:** Extruded Aluminum Housing with White Aluminum Reflector and LED Optimized Acrylic Lens with Insert

**LED Module:** Multiple White Low-Power Light Emitting Diodes (LEDs) in a uniform grid pattern.

Total Luminaire Efficacy = 89.8 Lm/W

0% Up 100% Down

Color Rendering Index (CRI) = 82



## ZONAL LUMEN SUMMARY

Zone	Lumens	%Fixture
0- 30	831	36.0
0- 40	1240	53.7
0- 60	1917	83.1
0- 90	2307	100.0
90- 180	0	0.0
0- 180	2307	100.0

## CANDELA DISTRIBUTION

	0.0	22.5	45.0	67.5	90.0
0	1159	1159	1159	1159	1159
5	1155	1144	1153	1156	1152
15	1099	1088	1095	1089	1084
25	945	928	912	886	876
35	700	680	649	620	608
45	509	493	467	437	424
55	389	377	352	329	319
65	272	262	245	229	222
75	133	127	117	108	105
85	17	17	16	14	14
90	0	0	0	0	0

Precision Architectural Lighting

**LED lighting facts**  
A Program of the U.S. DOE

---

**Light Output (Lumens)** 2307  
**Watts** 25.7  
**Lumens per Watt (Efficacy)** 89

---

**Color Accuracy**  
Color Rendering Index (CRI) 82

---

**Light Color**  
Correlated Color Temperature (CCT) 3477 (Bright White)

Warm White | Bright White | Daylight  
2700K | 3000K | 4500K | 6500K

---

**Warranty\*\*** Yes

All results, except LED Lumen Maintenance, are according to IESNA LM-79-2008: Approved Method for the Electrical and Photometric Testing of Solid-State Lighting. The U.S. Department of Energy (DOE) verifies product test data and results.

\*\* See [www.lightingfacts.com/products](http://www.lightingfacts.com/products) for details.

Registration Number: 1NRP-ZPJCHR (7/29/2013)  
Model Number: MLR5-MO-K35-4-XX-LOH-120  
Type: Surface-mounted or recessed troffers

