



LUMINAIRE TESTING LABORATORY, INC.

SUSTAINING MEMBER of the IESNA

905 Harrison Street · Allentown, PA 18103 · 610-770-1044 · Fax 610-770-8912 · www.LuminaireTesting.com

LTL NUMBER: 12730

DATE: 03-07-2008

PREPARED FOR: PRECISION ARCHITECTURAL LIGHTING

CATALOG NUMBER: MLS-I2-4-X-OP-X-120-T5HO

LUMINAIRE: EXTRUDED ALUMINUM HOUSING, FORMED SPECULAR ALUMINUM REFLECTOR, OPEN TOP.

LAMPS: TWO 54 WATT HIGH OUTPUT T5 LINEAR FLUORESCENT LAMPS RATED AT 4400 LUMENS EACH.

LAMP CATALOG NUMBER: PHILIPS F54T5/835/HO/ALTO

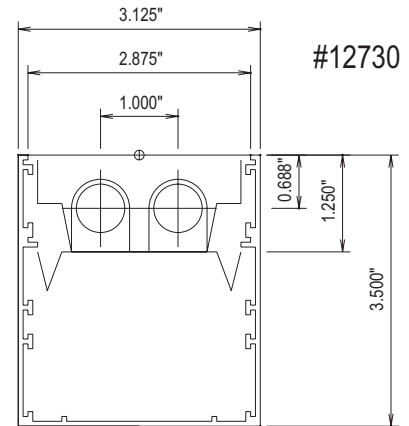
BALLAST: ONE UNIVERSAL LIGHTING TECHNOLOGIES B254PUNV-D

MOUNTING: PENDANT

LUMEN TO CANDELA RATIO USED = 9.18

TOTAL INPUT WATTS = 112.4 AT 120.0 VOLTS

THE 0 DEGREE PLANE IS PARALLEL WITH THE LAMPS.

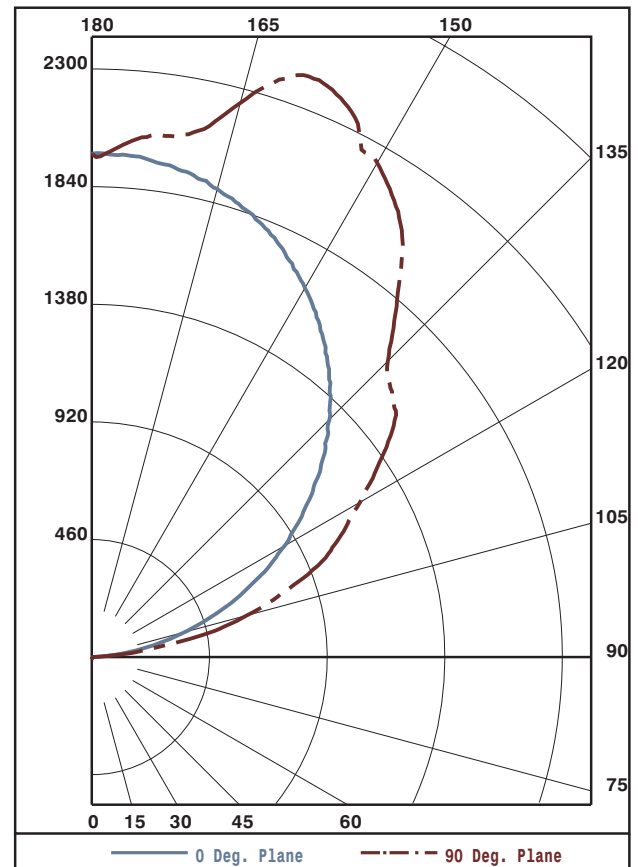


#12730

CANDELA DISTRIBUTION						FLUX
0.0	22.5	45.0	67.5	90.0		
90	0	0	0	0	0	0
95	83	151	132	119	112	135
105	371	518	603	621	625	591
115	704	909	967	1020	1052	939
125	1018	1371	1282	1387	1395	1177
135	1314	1762	1770	1662	1638	1286
145	1559	1884	2117	2099	2096	1240
155	1763	1916	2281	2368	2373	993
165	1896	2003	2078	2191	2244	594
175	1966	1981	2027	2038	2034	193
180	1966	1966	1966	1966	1966	

ZONAL LUMEN SUMMARY			
ZONE	LUMENS	%LAMP	%FIXT
0- 90	0	0.0	0.0
90-120	1665	18.9	23.3
90-130	2842	32.3	39.8
90-150	5368	61.0	75.1
90-180	7147	81.2	100.0
0-180	7147	81.2	100.0

TOTAL LUMINAIRE EFFICIENCY: 81.2%
 CIE TYPE: INDIRECT



Approved By: MG



LUMINAIRE TESTING LABORATORY, INC.

SUSTAINING MEMBER of the IESNA

905 Harrison Street · Allentown, PA 18103 · 610-770-1044 · Fax 610-770-8912 · www.LuminaireTesting.com

LTL NUMBER: 12730

DATE: 03-07-2008

PREPARED FOR: PRECISION ARCHITECTURAL LIGHTING

COEFFICIENTS OF UTILIZATION - ZONAL CAVITY METHOD
EFFECTIVE FLOOR CAVITY REFLECTANCE 0.20

Table with 17 columns (RC, 80, 70, 50, 30, 10, 0) and 11 rows (0-10) showing utilization coefficients.

CANDELA DISTRIBUTION

Table with 6 columns (0.0, 22.5, 45.0, 67.5, 90.0) and 17 rows (90-180) showing candela distribution values.

ZONAL LUMEN SUMMARY

Table with 2 columns (90-95, 17. to 175-180, 47.) showing zonal lumen summary values.

THIS TEST WAS CONDUCTED USING RELATIVE PHOTOMETRY TECHNIQUES ACCORDING TO STANDARD IESNA PROCEDURES. THE USER MUST THEREFORE USE CAUTION IN THE FOLLOWING SITUATIONS: 1) THIS TEST WAS PERFORMED USING A SPECIFIC BALLAST/LAMP COMBINATION. EXTRAPOLATION OF THESE DATA FOR OTHER BALLAST/LAMP COMBINATIONS MAY PRODUCE ERRONEOUS RESULTS. 2) ACCORDING TO IESNA PROCEDURES, THE BALLAST(S) AND LAMP(S) ARE PRESUMED TO PRODUCE 100% OF RATED OUTPUT. AN APPROPRIATE BALLAST FACTOR MUST BE APPLIED TO THE LUMEN OUTPUT RATINGS AND LUMINOUS INTENSITY VALUES GIVEN. 3) THIS TEST WAS CONDUCTED IN A CONTROLLED LABORATORY ENVIRONMENT WHERE THE AMBIENT TEMPERATURE WAS HELD AT 25°C ±1°C. FIELD PERFORMANCE MAY DIFFER PARTICULARLY IN REGARDS TO CHANGE IN LUMINOUS OUTPUT AS A RESULT OF DIFFERENCE IN AMBIENT TEMPERATURE AND METHOD OF MOUNTING THE LUMINAIRE.