



LUMINAIRE TESTING LABORATORY, INC.

SUSTAINING MEMBER of the IESNA

905 Harrison Street · Allentown, PA 18103 · 610-770-1044 · Fax 610-770-8912 · www.LuminaireTesting.com

LTL NUMBER: 13039

DATE: 04-11-2008

PREPARED FOR: PRECISION ARCHITECTURAL LIGHTING

CATALOG NUMBER: MLS-I1/D1-4-X-OP/PB-X-120-T5HO

LUMINAIRE: EXTRUDED ALUMINUM HOUSING, FORMED SPECULAR ALUMINUM UPPER REFLECTOR, FORMED WHITE ENAMEL ALUMINUM LOWER REFLECTOR, 30 CELL, 3/4" DEEP, SEMI-SPECULAR ALUMINUM BAFFLE, OPEN TOP.

LAMPS: TWO 54 WATT HIGH OUTPUT T5 LINEAR FLUORESCENT LAMPS RATED AT 4400 LUMENS EACH.

LAMP CATALOG NUMBER: PHILIPS F54T5/850/HO/ALTO

BALLASTS: TWO UNIVERSAL LIGHTING TECHNOLOGIES B254PUNV-D

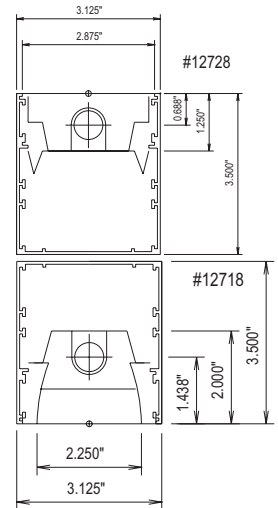
MOUNTING: PENDANT

NOTE: THIS TEST WAS CALCULATED USING MEASURED DATA FROM LTL TEST NUMBERS 12728 AND 12718.

LUMEN TO CANDELA RATIO USED = 9.18

TOTAL INPUT WATTS = 114.4 AT 120.0 VOLTS

THE 0 DEGREE PLANE IS PARALLEL WITH THE LAMPS.



CANDELA DISTRIBUTION

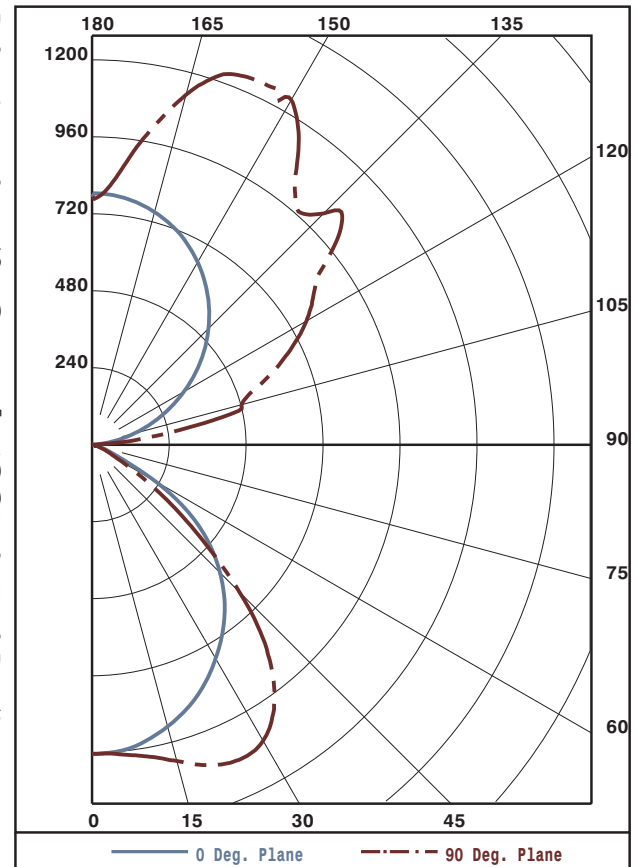
FLUX

	0.0	22.5	45.0	67.5	90.0	
0	960	960	960	960	960	
5	956	956	964	962	966	92
15	906	920	963	999	1018	273
25	822	861	963	1045	1080	441
35	708	784	904	959	985	545
45	561	658	698	662	647	502
55	365	417	346	265	240	298
65	94	93	81	67	56	87
75	23	20	16	17	16	20
85	2	2	2	3	3	3
90	0	0	0	0	0	
95	32	126	120	107	102	118
105	149	303	398	460	494	394
115	281	481	595	659	678	552
125	412	728	808	841	849	673
135	531	872	934	939	1024	684
145	632	921	1121	1146	1115	634
155	712	890	1135	1217	1239	486
165	767	831	985	1086	1122	274
175	796	783	806	824	830	79
180	782	782	782	782	782	

ZONAL LUMEN SUMMARY

ZONE	LUMENS	%LAMP	%FIXT
0- 30	805	9.1	13.1
0- 40	1350	15.3	21.9
0- 60	2149	24.4	34.9
0- 90	2259	25.7	36.7
90-120	1065	12.1	17.3
90-130	1738	19.8	28.2
90-150	3056	34.7	49.7
90-180	3895	44.3	63.3
0-180	6154	69.9	100.0

TOTAL LUMINAIRE EFFICIENCY: 69.9%
 CIE TYPE: SEMI-INDIRECT
 PLANE: 0-DEG 90-DEG
 SPACING CRITERIA: 1.2 1.5
 SHIELDING ANGLES: 29 41



Approved By: MG



LUMINAIRE TESTING LABORATORY, INC.

SUSTAINING MEMBER of the IESNA

905 Harrison Street · Allentown, PA 18103 · 610-770-1044 · Fax 610-770-8912 · www.LuminaireTesting.com

LTL NUMBER: 13039
PREPARED FOR: PRECISION ARCHITECTURAL LIGHTING

DATE: 04-11-2008

COEFFICIENTS OF UTILIZATION - ZONAL CAVITY METHOD
EFFECTIVE FLOOR CAVITY REFLECTANCE 0.20

Table with columns RC, RW, and rows for angles 80, 70, 50, 30, 10, 0. Values range from 0 to 73.

PLANE: 0-DEG 90-DEG
LUMINOUS LENGTH: 44.875 2.250

Table with columns ANGLE IN DEG, AVERAGE 0-DEG, AVERAGE 45-DEG, AVERAGE 90-DEG. Values range from 352 to 14736.



LUMINAIRE TESTING LABORATORY, INC.

SUSTAINING MEMBER of the IESNA

905 Harrison Street · Allentown, PA 18103 · 610-770-1044 · Fax 610-770-8912 · www.LuminaireTesting.com

LTL NUMBER: 13039

DATE: 04-11-2008

PREPARED FOR: PRECISION ARCHITECTURAL LIGHTING

CANDELA DISTRIBUTION

Table with 6 columns representing candela values at various angles (0.0, 22.5, 45.0, 67.5, 90.0) for beam diameters from 0 to 180.

ZONAL LUMEN SUMMARY

Table with 2 columns representing zonal lumen values for beam diameter ranges from 0-5 to 175-180.

THIS TEST WAS CONDUCTED USING RELATIVE PHOTOMETRY TECHNIQUES ACCORDING TO STANDARD IESNA PROCEDURES. THE USER MUST THEREFORE USE CAUTION IN THE FOLLOWING SITUATIONS: 1) THIS TEST WAS PERFORMED USING A SPECIFIC BALLAST/LAMP COMBINATION. EXTRAPOLATION OF THESE DATA FOR OTHER BALLAST/LAMP COMBINATIONS MAY PRODUCE ERRONEOUS RESULTS. 2) ACCORDING TO IESNA PROCEDURES, THE BALLAST(S) AND LAMP(S) ARE PRESUMED TO PRODUCE 100% OF RATED OUTPUT. AN APPROPRIATE BALLAST FACTOR MUST BE APPLIED TO THE LUMEN OUTPUT RATINGS AND LUMINOUS INTENSITY VALUES GIVEN. 3) THIS TEST WAS CONDUCTED IN A CONTROLLED LABORATORY ENVIRONMENT WHERE THE AMBIENT TEMPERATURE WAS HELD AT 25°C ±1°C. FIELD PERFORMANCE MAY DIFFER PARTICULARLY IN REGARDS TO CHANGE IN LUMINOUS OUTPUT AS A RESULT OF DIFFERENCE IN AMBIENT TEMPERATURE AND METHOD OF MOUNTING THE LUMINAIRE.