



LUMINAIRE TESTING LABORATORY, INC.

SUSTAINING MEMBER
of the
IESNA

905 Harrison Street · Allentown, PA 18103 · 610-770-1044 · Fax 610-770-8912 · www.LuminaireTesting.com

LTL NUMBER: 12729

DATE: 03-13-2008

PREPARED FOR: PRECISION ARCHITECTURAL LIGHTING

CATALOG NUMBER: MLS-I1-4-X-OP-X-120-T5

LUMINAIRE: EXTRUDED ALUMINUM HOUSING, FORMED SPECULAR ALUMINUM REFLECTOR, OPEN TOP.

LAMP: ONE 28 WATT T5 LINEAR FLUORESCENT LAMP RATED AT 2610 LUMENS.

LAMP CATALOG NUMBER: PHILIPS F28T5/835/ALTO

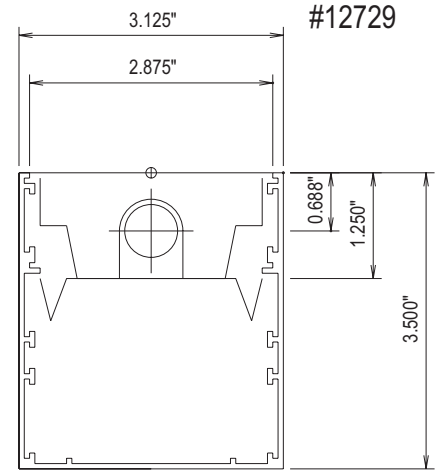
BALLAST: ONE ADVANCE ICN-2S28

MOUNTING: PENDANT

LUMEN TO CANDELA RATIO USED = 9.18

TOTAL INPUT WATTS = 32.0 AT 120.0 VOLTS

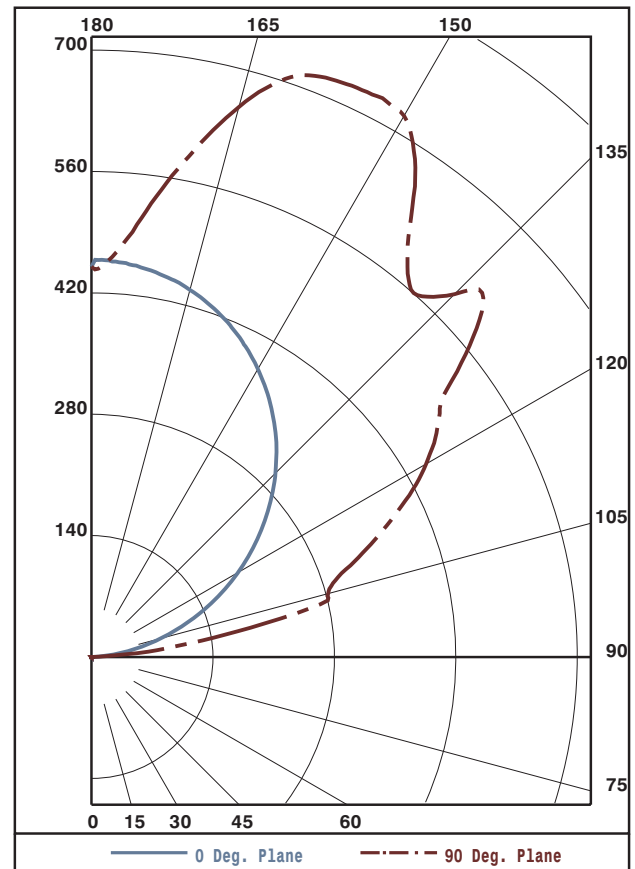
THE 0 DEGREE PLANE IS PARALLEL WITH THE LAMPS.



CANDELA DISTRIBUTION						FLUX
90	105	115	125	135	145	
0.0	82	157	231	300	358	46
22.5	174	275	423	511	542	
45.0	224	345	473	539	656	
67.5	262	378	484	544	668	
90.0	283	385	490	592	647	
0	225	316	390	397	370	
5	225	316	390	397	370	
10	225	316	390	397	370	
15	225	316	390	397	370	
20	225	316	390	397	370	
25	225	316	390	397	370	
30	225	316	390	397	370	

ZONAL LUMEN SUMMARY			
ZONE	LUMENS	%LAMP	%FIXT
0- 90	0	0.0	0.0
90-120	598	22.9	26.6
90-130	988	37.9	44.0
90-150	1755	67.2	78.1
90-180	2246	86.0	100.0
0-180	2246	86.0	100.0

TOTAL LUMINAIRE EFFICIENCY: 86.0%
CIE TYPE: INDIRECT



Approved By: MG



LUMINAIRE TESTING LABORATORY, INC.

SUSTAINING MEMBER of the IESNA

905 Harrison Street · Allentown, PA 18103 · 610-770-1044 · Fax 610-770-8912 · www.LuminaireTesting.com

LTL NUMBER: 12729

DATE: 03-13-2008

PREPARED FOR: PRECISION ARCHITECTURAL LIGHTING

COEFFICIENTS OF UTILIZATION - ZONAL CAVITY METHOD
EFFECTIVE FLOOR CAVITY REFLECTANCE 0.20

Table with 19 columns (RC, RW, 80, 70, 50, 30, 10, 0) and 11 rows of utilization coefficients.

CANDELA DISTRIBUTION

Table with 6 columns of candela values ranging from 0.0 to 90.0.

ZONAL LUMEN SUMMARY

Table with 2 columns of zonal lumen values for various height ranges.

THIS TEST WAS CONDUCTED USING RELATIVE PHOTOMETRY TECHNIQUES ACCORDING TO STANDARD IESNA PROCEDURES. THE USER MUST THEREFORE USE CAUTION IN THE FOLLOWING SITUATIONS: 1) THIS TEST WAS PERFORMED USING A SPECIFIC BALLAST/LAMP COMBINATION. EXTRAPOLATION OF THESE DATA FOR OTHER BALLAST/LAMP COMBINATIONS MAY PRODUCE ERRONEOUS RESULTS. 2) ACCORDING TO IESNA PROCEDURES, THE BALLAST(S) AND LAMP(S) ARE PRESUMED TO PRODUCE 100% OF RATED OUTPUT. AN APPROPRIATE BALLAST FACTOR MUST BE APPLIED TO THE LUMEN OUTPUT RATINGS AND LUMINOUS INTENSITY VALUES GIVEN. 3) THIS TEST WAS CONDUCTED IN A CONTROLLED LABORATORY ENVIRONMENT WHERE THE AMBIENT TEMPERATURE WAS HELD AT 25°C ±1°C. FIELD PERFORMANCE MAY DIFFER PARTICULARLY IN REGARDS TO CHANGE IN LUMINOUS OUTPUT AS A RESULT OF DIFFERENCE IN AMBIENT TEMPERATURE AND METHOD OF MOUNTING THE LUMINAIRE.