



LUMINAIRE TESTING LABORATORY, INC.

SUSTAINING MEMBER of the IESNA

905 Harrison Street · Allentown, PA 18103 · 610-770-1044 · Fax 610-770-8912 · www.LuminaireTesting.com

LTL NUMBER: 13048

DATE: 04-21-2008

PREPARED FOR: PRECISION ARCHITECTURAL LIGHTING

CATALOG NUMBER: MLS-I2/D2-4-X-OP/PB-X-120-T5

LUMINAIRE: EXTRUDED ALUMINUM HOUSING, FORMED SPECULAR ALUMINUM UPPER REFLECTOR, FORMED WHITE ENAMEL ALUMINUM LOWER REFLECTOR, 30 CELL, 3/4" DEEP, FORMED SEMI-SPECULAR ALUMINUM BAFFLE.

LAMPS: FOUR 28 WATT T5 LINEAR FLUORESCENT LAMPS RATED AT 2610 LUMENS EACH.

LAMP CATALOG NUMBER: PHILIPS F28T5/835/ALTO

BALLASTS: TWO ADVANCE ICN-2S28

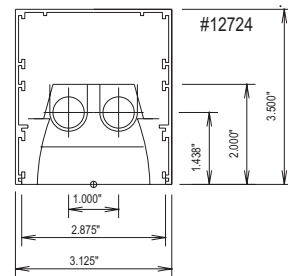
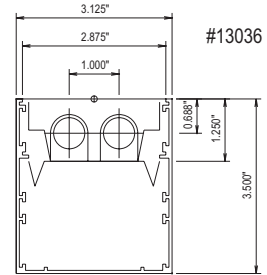
MOUNTING: PENDANT

NOTE: THIS TEST WAS CALCULATED USING MEASURED DATA FROM LTL TEST NUMBERS 13036 AND 12724.

LUMEN TO CANDELA RATIO USED = 9.18

TOTAL INPUT WATTS = 113.7 AT 120.0 VOLTS

THE 0 DEGREE PLANE IS PARALLEL WITH THE LAMPS.



CANDELA DISTRIBUTION

FLUX

	0.0	22.5	45.0	67.5	90.0	
0	1217	1217	1217	1217	1217	
5	1212	1212	1218	1212	1214	115
15	1144	1150	1167	1166	1168	327
25	1033	1040	1041	1050	1060	481
35	886	881	880	892	919	557
45	697	683	686	715	729	536
55	441	419	393	323	284	335
65	108	102	90	75	61	95
75	27	22	18	19	19	23
85	3	3	3	3	3	4
90	0	0	0	0	0	
95	47	86	71	66	62	80
105	223	314	374	378	379	359
115	429	544	592	632	652	574
125	623	833	774	846	852	715
135	798	1068	1072	1000	985	778
145	947	1141	1281	1273	1271	751
155	1066	1142	1379	1434	1438	599
165	1149	1197	1242	1324	1362	357
175	1192	1191	1219	1228	1229	116
180	1188	1188	1188	1188	1188	

ZONAL LUMEN SUMMARY

ZONE	LUMENS	%LAMP	%FIXT
0- 30	924	8.8	13.6
0- 40	1481	14.2	21.8
0- 60	2351	22.5	34.6
0- 90	2472	23.7	36.3
90-120	1013	9.7	14.9
90-130	1728	16.6	25.4
90-150	3257	31.2	47.9
90-180	4330	41.5	63.7
0-180	6802	65.2	100.0

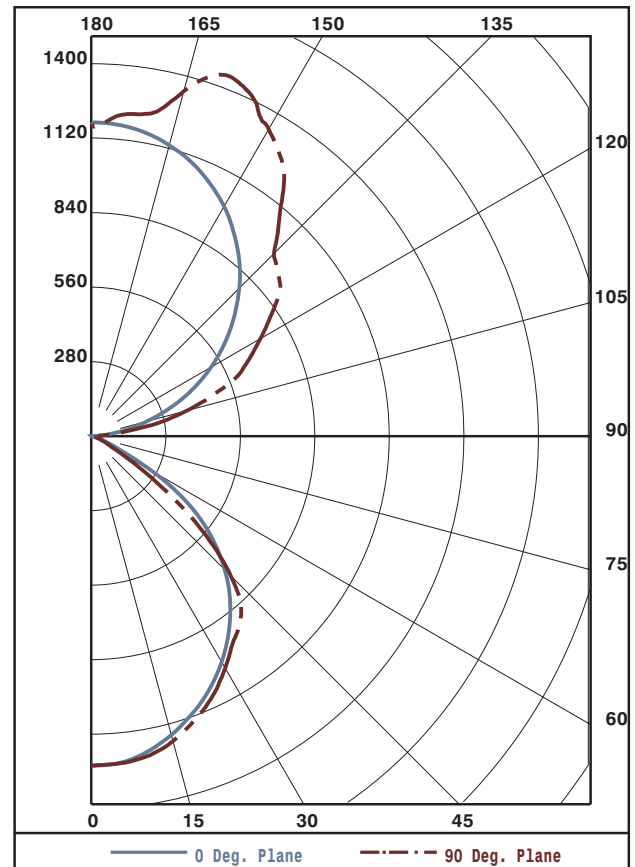
TOTAL LUMINAIRE EFFICIENCY: 65.2%

CIE TYPE: SEMI-INDIRECT

PLANE: 0-DEG 90-DEG

SPACING CRITERIA: 1.2 1.2

SHIELDING ANGLES: 29 34



Approved By: MG

THIS REPORT BASED ON LM-41 AND OTHER PERTINENT IESNA PROCEDURES.



LUMINAIRE TESTING LABORATORY, INC.

SUSTAINING MEMBER of the IESNA

905 Harrison Street · Allentown, PA 18103 · 610-770-1044 · Fax 610-770-8912 · www.LuminaireTesting.com

LTL NUMBER: 13048

DATE: 04-21-2008

PREPARED FOR: PRECISION ARCHITECTURAL LIGHTING

COEFFICIENTS OF UTILIZATION - ZONAL CAVITY METHOD
EFFECTIVE FLOOR CAVITY REFLECTANCE 0.20

Table with columns RC, RW, and rows for angles 80, 70, 50, 30, 10, 0. Each cell contains a numerical value representing the coefficient of utilization.

PLANE: 0-DEG 90-DEG
LUMINOUS LENGTH: 48.000 2.250

Table with columns ANGLE IN DEG, AVERAGE 0-DEG, AVERAGE 45-DEG, AVERAGE 90-DEG. Rows show luminance values for angles 0, 45, 55, 65, 75, 85.



LUMINAIRE TESTING LABORATORY, INC.

SUSTAINING MEMBER of the IESNA

905 Harrison Street · Allentown, PA 18103 · 610-770-1044 · Fax 610-770-8912 · www.LuminaireTesting.com

LTL NUMBER: 13048

DATE: 04-21-2008

PREPARED FOR: PRECISION ARCHITECTURAL LIGHTING

CANDELA DISTRIBUTION

Table with 6 columns of candela values for various angles from 0 to 180 degrees.

ZONAL LUMEN SUMMARY

Table with 2 columns: Zonal angle ranges and corresponding lumen values.

THIS TEST WAS CONDUCTED USING RELATIVE PHOTOMETRY TECHNIQUES ACCORDING TO STANDARD IESNA PROCEDURES. THE USER MUST THEREFORE USE CAUTION IN THE FOLLOWING SITUATIONS: 1) THIS TEST WAS PERFORMED USING A SPECIFIC BALLAST/LAMP COMBINATION. EXTRAPOLATION OF THESE DATA FOR OTHER BALLAST/LAMP COMBINATIONS MAY PRODUCE ERRONEOUS RESULTS. 2) ACCORDING TO IESNA PROCEDURES, THE BALLAST(S) AND LAMP(S) ARE PRESUMED TO PRODUCE 100% OF RATED OUTPUT. AN APPROPRIATE BALLAST FACTOR MUST BE APPLIED TO THE LUMEN OUTPUT RATINGS AND LUMINOUS INTENSITY VALUES GIVEN. 3) THIS TEST WAS CONDUCTED IN A CONTROLLED LABORATORY ENVIRONMENT WHERE THE AMBIENT TEMPERATURE WAS HELD AT 25°C ±1°C. FIELD PERFORMANCE MAY DIFFER PARTICULARLY IN REGARDS TO CHANGE IN LUMINOUS OUTPUT AS A RESULT OF DIFFERENCE IN AMBIENT TEMPERATURE AND METHOD OF MOUNTING THE LUMINAIRE.