



# LUMINAIRE TESTING LABORATORY, INC.

SUSTAINING MEMBER  
of the  
IESNA

905 Harrison Street · Allentown, PA 18103 · 610-770-1044 · Fax 610-770-8912 · www.LuminaireTesting.com

LTL NUMBER: 13047

DATE: 04-21-2008

PREPARED FOR: PRECISION ARCHITECTURAL LIGHTING

CATALOG NUMBER: MLS-I2/D2-4-X-OP/PBW-X-120-T5

LUMINAIRE: EXTRUDED ALUMINUM HOUSING, FORMED SPECULAR ALUMINUM UPPER REFLECTOR, FORMED WHITE ENAMEL ALUMINUM LOWER REFLECTOR, 30 CELL, 3/4" DEEP, FORMED WHITE ENAMEL ALUMINUM BAFFLE.

LAMPS: FOUR 28 WATT T5 LINEAR FLUORESCENT LAMPS RATED AT 2610 LUMENS EACH.

LAMP CATALOG NUMBER: PHILIPS F28T5/835/ALTO

BALLASTS: TWO ADVANCE ICN-2S28

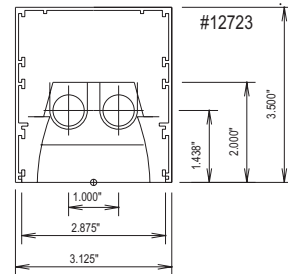
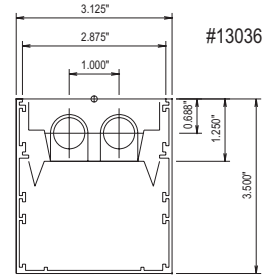
MOUNTING: PENDANT

NOTE: THIS TEST WAS CALCULATED USING MEASURED DATA FROM LTL TEST NUMBERS 13036 AND 12723.

LUMEN TO CANDELA RATIO USED = 9.18

TOTAL INPUT WATTS = 113.5 AT 120.0 VOLTS

THE 0 DEGREE PLANE IS PARALLEL WITH THE LAMPS.



### CANDELA DISTRIBUTION

	0.0	22.5	45.0	67.5	90.0	FLUX
0	1321	1321	1321	1321	1321	
5	1306	1307	1318	1312	1313	124
15	1194	1201	1224	1227	1230	342
25	1034	1040	1033	1040	1054	479
35	843	832	818	836	868	522
45	623	604	604	605	613	468
55	380	375	367	341	339	324
65	171	175	188	191	197	185
75	91	91	93	98	102	100
85	21	21	23	24	25	26
90	0	0	0	0	0	
95	47	86	71	66	62	80
105	223	314	374	378	379	359
115	429	544	592	632	652	574
125	623	833	774	846	852	715
135	798	1068	1072	1000	985	778
145	947	1141	1281	1273	1271	751
155	1066	1142	1379	1434	1438	599
165	1149	1197	1242	1324	1362	357
175	1192	1191	1219	1228	1229	116
180	1188	1188	1188	1188	1188	

### FLUX

### ZONAL LUMEN SUMMARY

ZONE	LUMENS	%LAMP	%FIXT
0- 30	945	9.1	13.7
0- 40	1468	14.1	21.3
0- 60	2260	21.6	32.7
0- 90	2571	24.6	37.3
90-120	1013	9.7	14.7
90-130	1728	16.6	25.0
90-150	3257	31.2	47.2
90-180	4330	41.5	62.7
0-180	6901	66.1	100.0

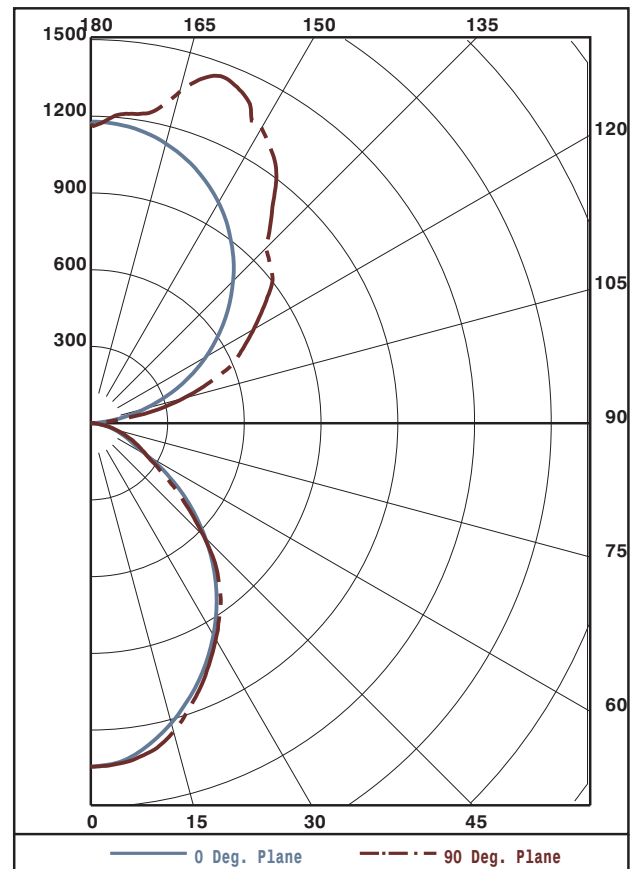
TOTAL LUMINAIRE EFFICIENCY: 66.1%

CIE TYPE: SEMI-INDIRECT

PLANE: 0-DEG 90-DEG

SPACING CRITERIA: 1.1 1.1

SHIELDING ANGLES: 29 34



Approved By: MG



LTL NUMBER: 13047

DATE: 04-21-2008

PREPARED FOR: PRECISION ARCHITECTURAL LIGHTING

COEFFICIENTS OF UTILIZATION - ZONAL CAVITY METHOD
EFFECTIVE FLOOR CAVITY REFLECTANCE 0.20

Table with columns for RC, RW, and various angles (70, 50, 30, 10, 0) for rows 0 through 10.

PLANE: 0-DEG 90-DEG
LUMINOUS LENGTH: 48.000 2.250

Table with columns for LUMINANCE IN CANDELA PER SQUARE METER, ANGLE IN DEG, and AVERAGE values for 0-DEG, 45-DEG, and 90-DEG.



LUMINAIRE TESTING LABORATORY, INC.

SUSTAINING MEMBER of the IESNA

905 Harrison Street · Allentown, PA 18103 · 610-770-1044 · Fax 610-770-8912 · www.LuminaireTesting.com

LTL NUMBER: 13047

DATE: 04-21-2008

PREPARED FOR: PRECISION ARCHITECTURAL LIGHTING

CANDELA DISTRIBUTION

Table with 6 columns of candela values for angles from 0.0 to 180 degrees.

ZONAL LUMEN SUMMARY

Table with 3 columns of zonal lumen values for angle ranges from 0-5 to 175-180 degrees.

THIS TEST WAS CONDUCTED USING RELATIVE PHOTOMETRY TECHNIQUES ACCORDING TO STANDARD IESNA PROCEDURES. THE USER MUST THEREFORE USE CAUTION IN THE FOLLOWING SITUATIONS: 1) THIS TEST WAS PERFORMED USING A SPECIFIC BALLAST/LAMP COMBINATION. EXTRAPOLATION OF THESE DATA FOR OTHER BALLAST/LAMP COMBINATIONS MAY PRODUCE ERRONEOUS RESULTS. 2) ACCORDING TO IESNA PROCEDURES, THE BALLAST(S) AND LAMP(S) ARE PRESUMED TO PRODUCE 100% OF RATED OUTPUT. AN APPROPRIATE BALLAST FACTOR MUST BE APPLIED TO THE LUMEN OUTPUT RATINGS AND LUMINOUS INTENSITY VALUES GIVEN. 3) THIS TEST WAS CONDUCTED IN A CONTROLLED LABORATORY ENVIRONMENT WHERE THE AMBIENT TEMPERATURE WAS HELD AT 25°C ±1°C. FIELD PERFORMANCE MAY DIFFER PARTICULARLY IN REGARDS TO CHANGE IN LUMINOUS OUTPUT AS A RESULT OF DIFFERENCE IN AMBIENT TEMPERATURE AND METHOD OF MOUNTING THE LUMINAIRE.