



# LUMINAIRE TESTING LABORATORY, INC.

SUSTAINING MEMBER  
of the  
IESNA

905 Harrison Street · Allentown, PA 18103 · 610-770-1044 · Fax 610-770-8912 · www.LuminaireTesting.com

LTL NUMBER: 13050

DATE: 04-21-2008

PREPARED FOR: PRECISION ARCHITECTURAL LIGHTING

CATALOG NUMBER: MLS-I1/D1-4-X-OP/PBW-X-120-T8

LUMINAIRE: EXTRUDED ALUMINUM HOUSING, FORMED SPECULAR ALUMINUM UPPER REFLECTOR, FORMED WHITE ENAMEL ALUMINUM LOWER REFLECTOR, 30 CELL, 3/4" DEEP, FORMED WHITE ENAMEL ALUMINUM BAFFLE.

LAMPS: TWO 32 WATT T8 LINEAR FLUORESCENT LAMPS RATED AT 2850 LUMENS EACH.

LAMP CATALOG NUMBER: PHILIPS F32T8/TL835/ALTO

BALLASTS: TWO UNIVERSAL LIGHTING TECHNOLOGIES B232IUNV-C

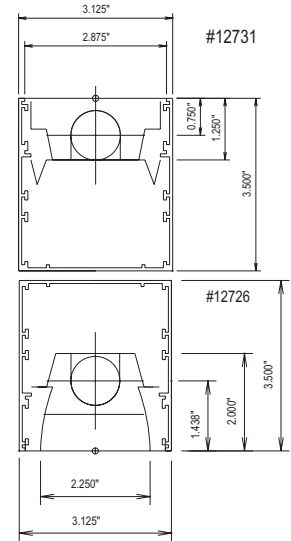
MOUNTING: PENDANT

NOTE: THIS TEST WAS CALCULATED USING MEASURED DATA FROM LTL TEST NUMBERS 12731 AND 12726.

LUMEN TO CANDELA RATIO USED = 9.18

TOTAL INPUT WATTS = 69.2 AT 120.0 VOLTS

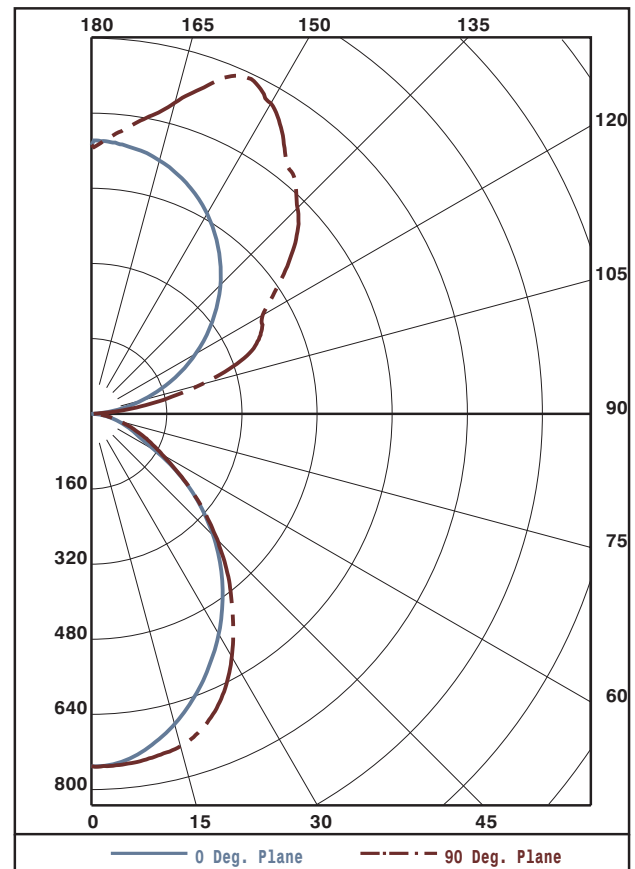
THE 0 DEGREE PLANE IS PARALLEL WITH THE LAMPS.



CANDELA DISTRIBUTION						FLUX
	0.0	22.5	45.0	67.5	90.0	
0	750	750	750	750	750	
5	743	742	749	747	749	71
15	682	686	706	722	731	199
25	592	602	628	648	661	288
35	487	499	510	511	526	317
45	366	376	367	364	377	285
55	232	237	231	228	234	208
65	107	109	121	126	132	120
75	57	56	58	62	65	63
85	13	14	14	15	15	16
90	0	0	0	0	0	
95	24	55	51	42	38	52
105	112	184	243	245	242	223
115	209	327	341	378	397	334
125	303	471	489	493	490	413
135	388	555	602	615	620	440
145	460	571	711	717	712	404
155	518	583	691	772	788	311
165	558	588	635	670	685	179
175	579	577	591	597	598	57
180	572	572	572	572	572	

ZONAL LUMEN SUMMARY			
ZONE	LUMENS	%LAMP	%FIXT
0- 30	558	9.8	14.0
0- 40	874	15.3	22.0
0- 60	1367	24.0	34.4
0- 90	1566	27.5	39.4
90-120	610	10.7	15.3
90-130	1023	17.9	25.7
90-150	1867	32.8	46.9
90-180	2414	42.3	60.6
0-180	3980	69.8	100.0

TOTAL LUMINAIRE EFFICIENCY: 69.8%  
 CIE TYPE: SEMI-INDIRECT  
 PLANE: 0-DEG 90-DEG  
 SPACING CRITERIA: 1.1 1.2  
 SHIELDING ANGLES: 29 34



Approved By: MG

THIS REPORT BASED ON LM-41 AND OTHER PERTINENT IESNA PROCEDURES.



LUMINAIRE TESTING LABORATORY, INC.

SUSTAINING MEMBER of the IESNA

905 Harrison Street · Allentown, PA 18103 · 610-770-1044 · Fax 610-770-8912 · www.LuminaireTesting.com

LTL NUMBER: 13050

DATE: 04-21-2008

PREPARED FOR: PRECISION ARCHITECTURAL LIGHTING

COEFFICIENTS OF UTILIZATION - ZONAL CAVITY METHOD
EFFECTIVE FLOOR CAVITY REFLECTANCE 0.20

Table with columns RC, RW, and rows for cavity heights 80, 70, 50, 30, 10, 0. Each row contains 16 numerical values representing utilization coefficients.

PLANE: 0-DEG 90-DEG
LUMINOUS LENGTH: 44.875 2.250

Table titled 'LUMINANCE IN CANDELA PER SQUARE METER' with columns for angle in degrees and average values for 0-DEG, 45-DEG, and 90-DEG.



LUMINAIRE TESTING LABORATORY, INC.

SUSTAINING MEMBER of the IESNA

905 Harrison Street · Allentown, PA 18103 · 610-770-1044 · Fax 610-770-8912 · www.LuminaireTesting.com

LTL NUMBER: 13050

DATE: 04-21-2008

PREPARED FOR: PRECISION ARCHITECTURAL LIGHTING

CANDELA DISTRIBUTION

ZONAL LUMEN SUMMARY

Table with 6 columns for Candela Distribution (0.0 to 180) and 2 columns for Zonal Lumen Summary (0-5 to 175-180).

THIS TEST WAS CONDUCTED USING RELATIVE PHOTOMETRY TECHNIQUES ACCORDING TO STANDARD IESNA PROCEDURES. THE USER MUST THEREFORE USE CAUTION IN THE FOLLOWING SITUATIONS: 1) THIS TEST WAS PERFORMED USING A SPECIFIC BALLAST/LAMP COMBINATION. EXTRAPOLATION OF THESE DATA FOR OTHER BALLAST/LAMP COMBINATIONS MAY PRODUCE ERRONEOUS RESULTS. 2) ACCORDING TO IESNA PROCEDURES, THE BALLAST(S) AND LAMP(S) ARE PRESUMED TO PRODUCE 100% OF RATED OUTPUT. AN APPROPRIATE BALLAST FACTOR MUST BE APPLIED TO THE LUMEN OUTPUT RATINGS AND LUMINOUS INTENSITY VALUES GIVEN. 3) THIS TEST WAS CONDUCTED IN A CONTROLLED LABORATORY ENVIRONMENT WHERE THE AMBIENT TEMPERATURE WAS HELD AT 25°C ±1°C. FIELD PERFORMANCE MAY DIFFER PARTICULARLY IN REGARDS TO CHANGE IN LUMINOUS OUTPUT AS A RESULT OF DIFFERENCE IN AMBIENT TEMPERATURE AND METHOD OF MOUNTING THE LUMINAIRE.