

REPORT NUMBER: ITL77260

PAGE: 1 OF 4

ISSUE DATE: 05/20/13

REVISED: 06/18/13

PREPARED FOR: PRECISION ARCHITECTURAL LIGHTING

CATALOG NUMBER: MLS5-D1-4-TWA-120-T8

LUMINAIRE: EXTRUDED METAL HOUSING WITH WHITE PAINTED GENERAL INTERIOR FINISH AND FABRICATED WHITE PAINTED FLAT METAL END CAPS, FORMED WHITE PAINTED METAL REFLECTOR AND SOCKET MOUNTING BRACKETS, EXTRUDED TRANSLUCENT WHITE FROSTED ACRYLIC DIFFUSER. DIFFUSER FROSTED BOTH SIDES.

LAMP: ONE 32-WATT T-8 FO32/835 LINEAR FLUORESCENT.

BALLAST: UNIVERSAL B232IUNV-C

THE 0 DEGREE PLANE IS PARALLEL WITH THE LAMP.

TOTAL REFLECTANCE OF PAINT = 89.3 %

MOUNTING: SURFACE/SUSPENDED

TOTAL INPUT WATTS = 31.9 AT 120.0 VOLTS

REPORT IS BASED ON 2950 LUMENS PER LAMP.

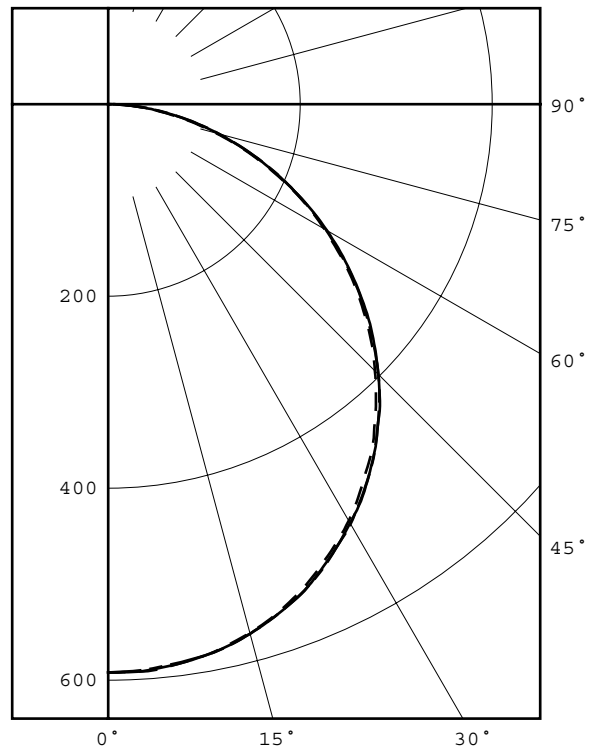
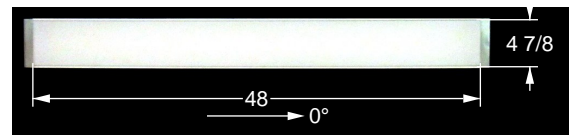
CANDELA DISTRIBUTION						FLUX
	0.0	22.5	45.0	67.5	90.0	
0	592	592	592	592	592	
5	591	586	590	591	589	56
15	570	566	571	573	571	161
25	528	525	531	533	532	244
35	468	468	473	475	473	295
45	393	395	398	398	398	306
55	307	308	310	310	309	276
65	213	213	214	214	214	212
75	116	117	119	119	120	125
85	32	33	34	35	35	38
90	0	0	0	0	0	

ZONAL LUMEN SUMMARY				
ZONE	LUMENS	%LAMP	%FIXT	
0- 30	461	15.6	26.9	
0- 40	756	25.6	44.1	
0- 60	1338	45.4	78.1	
0- 90	1713	58.1	100.0	
90-180	0	0.0	0.0	
0-180	1713	58.1	100.0	

TOTAL LUMINAIRE EFFICIENCY = 58.1 %

CIE TYPE - DIRECT  
PLANE : 0-DEG 90-DEG  
SPACING CRITERIA : 1.26 1.26  
SHIELDING ANGLES : 90 90  
LUMINOUS LENGTH : 48.000 4.875

LUMINANCE DATA IN CANDELA/SQ M				
ANGLE IN DEG	AVERAGE 0-DEG	AVERAGE 45-DEG	AVERAGE 90-DEG	
45	3681.	3728.	3728.	
55	3545.	3580.	3568.	
65	3338.	3354.	3354.	
75	2969.	3046.	3071.	
85	2432.	2584.	2660.	



LEGEND:  
0-deg - - - - -  
45-deg = = = = =  
90-deg - - - - -

Checked       M KLOPF        
Approved       R BEATTIE        
Lighting Engineer



**itl boulder**  
THE LIGHT CENTER OF THE INDUSTRY SINCE 1955

INDEPENDENT TESTING LABORATORIES, INC.  
 4066 CAMELOT CIRCLE, LONGMONT, CO 80504 USA

PHONE: (303) 442-1255 • FAX: (970) 535-3114 • E-MAIL: [itl@itlboulder.com](mailto:itl@itlboulder.com) • WEBSITE: [www.itlboulder.com](http://www.itlboulder.com)

REPORT NUMBER: ITL77260

PAGE: 2 OF 4

ISSUE DATE: 05/20/13

REVISED: 06/18/13

PREPARED FOR: PRECISION ARCHITECTURAL LIGHTING

CANDELA DISTRIBUTION  
 LATERAL ANGLE

	0.0	22.5	45.0	67.5	90.0
0.0	592	592	592	592	592
2.5	592	588	592	593	591
5.0	591	586	590	591	589
7.5	587	583	587	588	586
10.0	583	579	583	584	583
12.5	577	573	578	579	578
15.0	570	566	571	573	571
17.5	562	558	563	565	563
20.0	552	548	554	556	554
22.5	541	538	544	545	544
25.0	528	525	531	533	532
27.5	515	512	518	520	518
30.0	501	498	504	506	505
32.5	485	484	490	491	489
35.0	468	468	473	475	473
37.5	452	451	456	457	456
40.0	432	433	437	438	437
42.5	413	414	419	419	418
45.0	393	395	398	398	398
47.5	373	374	377	377	376
50.0	351	353	356	355	354
52.5	329	331	333	332	332
55.0	307	308	310	310	309
57.5	283	285	287	286	285
60.0	260	261	263	262	262
62.5	237	237	239	238	238
65.0	213	213	214	214	214
67.5	188	189	190	190	191
70.0	164	165	166	166	166
72.5	140	141	142	143	143
75.0	116	117	119	119	120
77.5	93	94	96	97	97
80.0	71	73	74	75	76
82.5	51	52	53	55	54
85.0	32	33	34	35	35
87.5	15	16	16	16	17
90.0	0	0	0	0	0



**itl boulder**  
THE LIGHT CENTER OF THE INDUSTRY SINCE 1955

INDEPENDENT TESTING LABORATORIES, INC.  
4066 CAMELOT CIRCLE, LONGMONT, CO 80504 USA

PHONE: (303) 442-1255 • FAX: (970) 535-3114 • E-MAIL: [itl@itlboulder.com](mailto:itl@itlboulder.com) • WEBSITE: [www.itlboulder.com](http://www.itlboulder.com)

REPORT NUMBER: ITL77260  
ISSUE DATE: 05/20/13  
PREPARED FOR: PRECISION ARCHITECTURAL LIGHTING

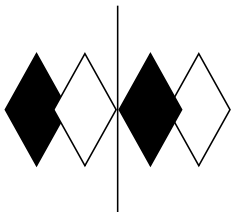
PAGE: 3 OF 4  
REVISED: 06/18/13

5-DEGREE  
ZONAL LUMEN SUMMARY

0- 5	14
5- 10	42
10- 15	68
15- 20	93
20- 25	114
25- 30	131
30- 35	144
35- 40	151
40- 45	154
45- 50	152
50- 55	144
55- 60	132
60- 65	116
65- 70	96
70- 75	74
75- 80	51
80- 85	29
85- 90	9

10-DEGREE  
ZONAL LUMEN SUMMARY

0- 10	56
0- 20	217
0- 30	461
0- 40	756
0- 50	1062
0- 60	1338
0- 70	1549
0- 80	1675
0- 90	1713



**itl boulder**  
THE LIGHT CENTER OF THE INDUSTRY SINCE 1955

INDEPENDENT TESTING LABORATORIES, INC.  
 4066 CAMELOT CIRCLE, LONGMONT, CO 80504 USA

PHONE: (303) 442-1255 • FAX: (970) 535-3114 • E-MAIL: [itl@itlboulder.com](mailto:itl@itlboulder.com) • WEBSITE: [www.itlboulder.com](http://www.itlboulder.com)

REPORT NUMBER: ITL77260

PAGE: 4 OF 4

ISSUE DATE: 05/20/13

REVISED: 06/18/13

PREPARED FOR: PRECISION ARCHITECTURAL LIGHTING

COEFFICIENTS OF UTILIZATION - ZONAL CAVITY METHOD

EFFECTIVE FLOOR CAVITY REFLECTANCE 0.20

RC	80				70				50			30			10			0	
	RW	70	50	30	10	70	50	30	10	50	30	10	50	30	10	50	30	10	0
0	69	69	69	69	68	68	68	68	65	65	65	62	62	62	59	59	59	58	
1	63	60	58	55	61	59	57	54	56	54	53	54	53	51	52	51	50	48	
2	57	52	48	45	56	51	48	44	49	46	43	47	45	42	45	43	41	40	
3	52	46	41	37	51	45	40	37	43	39	36	42	38	36	40	37	35	34	
4	48	41	35	31	46	40	35	31	38	34	31	37	33	30	36	33	30	29	
5	44	36	31	27	43	36	31	27	34	30	27	33	29	26	32	29	26	25	
6	40	33	27	24	39	32	27	23	31	27	23	30	26	23	29	26	23	22	
7	37	30	24	21	36	29	24	21	28	24	21	27	23	20	27	23	20	19	
8	35	27	22	19	34	27	22	18	26	21	18	25	21	18	24	21	18	17	
9	33	25	20	17	32	24	20	17	24	19	17	23	19	16	22	19	16	15	
10	31	23	18	15	30	23	18	15	22	18	15	21	18	15	21	17	15	14	

ALL CANDELA, LUMENS, LUMINANCE, COEFFICIENT OF UTILIZATION AND VCP VALUES IN THIS REPORT ARE BASED ON RELATIVE PHOTOMETRY WHICH ASSUMES A BALLAST FACTOR OF 1.000. ANY CALCULATIONS PREPARED FROM THESE DATA SHOULD INCLUDE AN APPROPRIATE BALLAST FACTOR.