

Microlinea™ Suspended Series 3 - Fluorescent

Catalog Number	Type
Project Name	

MLS3-I1/D2 • MLS3-I2/D1

3 1/8" x 5" Indirect/Direct (T5 or T5HO Lamps)



S P E C I F I C A T I O N S

Housing

One-piece .080" thick extruded aluminum. Die-cast aluminum end caps are secured with no visible fasteners. Standard lengths are nominal 4', 8' and 12'. Provisions may be made for patterns and continuous rows of any length.

Finish

Standard and premium finishes are baked powder coat electrostatically applied (2.0 mil minimum thickness) to assure aesthetics and durability. Standard finish for stems and canopies is white.

Indirect Optical Controls

- (OP) Open
- (DC) Extruded 100% DR acrylic dust cover

Direct Optical Controls

- (PB) 3/4" deep semi-specular aluminum parabolic baffle with blades on 1 1/2" centers
- (PBW) 3/4" deep white aluminum parabolic baffle with blades on 1 1/2" centers
- (LP) Flush clear extruded 100% DR acrylic linear prismatic lens
- (TWA) Flush translucent white extruded 100% DR acrylic lens
- (FC) Flush frosted clear extruded DR acrylic lens

Reflectors

- Indirect - Die-formed from .020" thick high reflectance specular aluminum.
- Direct - Die-formed from .020" thick aluminum and finished with a high reflectance white enamel.

Ballast

Standard ballasts for T5 and T5HO lamps are UL/CUL listed, Class P, HPF, electronic, universal 120/277volt, programmed rapid start with <10% THD.

Circuitry

All fixtures are factory pre-wired for a single circuit. Provision for multiple switching/circuiting is optional.

Wiring

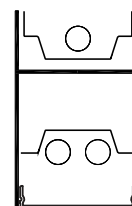
All fixtures intended for continuous rows are provided with factory installed quick-connect wiring.

Controls

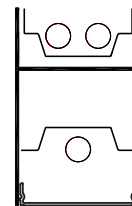
Contact factory for control by Occupancy Sensors, Photo Controls and Daylight Harvesting.

Certification

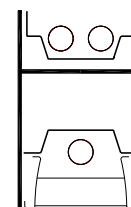
All fixtures are UL/CUL listed for use in 'Dry Applications'. 'Damp Location' is optional.



MLS3-I1/D2
T5
Flush Lens Shown

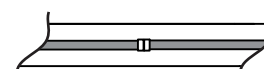


MLS3-I2/D1
T5 or T5HO
Flush Lens Shown

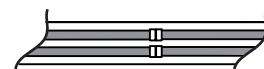


MLS3-I2/D1
T5 or T5HO
Parabolic Baffle Shown

In-Line Lamps:



1 Lamp T5/T5HO



2 Lamp T5/T5HO
(*Note: 2 Lamp T5HO for Indirect Only)

Series

MLS3-I1/D2
MLS3-I2/D1

Standard Lengths:

4', 8' and 12'

Mounting

CN = Cable (Non-Tbar) Fully Adjustable (36" Standard)
P = Rigid Stem (Up to 48" Standard)
K = Swivel Stem (Up to 48" Standard)

MLS3-I2/D1-IL-12-CT-DC/PB-F01M-V-T5-[]

Lamp Configuration	Indirect Optical Controls	Direct Optical Controls	Standard Finishes	Voltage	Lamp Type	Options
IL In-Line Lamps - T5, T5HO	OP Open	PB Semi-Specular Parabolic Baffle	F01M Matte White Premium Finishes F01G Gloss White	120	T5	SS(U/L)(Upper/Lower) Lamp Row Switching (Common Neutral)
	DC Dust Cover (N/A for T5HO)	PBW White Parabolic Baffle	F02 Ivory	277	T5HO	NLCKT Night Light Circuit (Common Neutral)
		LP Linear Prismatic Lens	F03 Stonewash	347		EMCKT Emergency Circuit (Separate Hot & Neutral)
		TWA Translucent White Acrylic Lens	F04 Camel			EBPL Emergency Battery Pack (635-700 Lumens)
		FC Frosted Clear Lens	F05 Gray Day			EBPH Emergency Battery Pack (975-1325 Lumens)
			F06 Pebble Beach			
			F07 Steel			
			F08 Gray Seal			
			F09 Mocha			
			F10 Bronzed			
			F11G Gloss Black			
			F11M Matte Black			
			F12 Ultrasonic Clear			
			F13 Merlot			
			F14 Red Skies			
			F15 Lemon			
			F16 Forest Hunter			
			F17 Olive			
			F18 Khaki			
			F19 Heather Green			
			F20 Blue Print			
			F21 Reflex Blue			
			F22 Navy			
			FCC Custom Color			
						Dim Dimming
						FS Fused Ballasts
						GTD Generator Transfer Device
						AO White Acrylic Baffle Overlay
						DL Damp Location



Suspended

MLS3-I1/D2

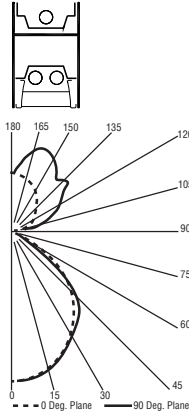
Indirect/Direct - T5 Lamps
Semi-Specular Aluminum Parabolic Baffle

Catalog Number: MLS3-I1/D2-4-X-OP/PB-F01M-120-T5
Report Number: LTL#13045.ies

Luminaire Description: Extruded Aluminum Housing with Specular Aluminum Reflector Up and White Aluminum Reflector Down and Semi-Specular Parabolic Baffle and Open Top

Lamps: Three Philips F28T5/835/ALTO
 Rated at 2610 Lumens Each

Total Luminaire Efficiency = 60.3%
 48% Up 52% Down



MLS3-I1/D2

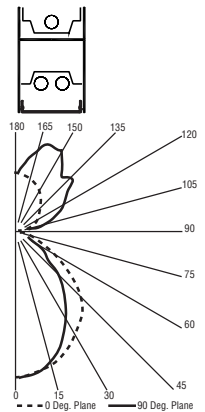
Indirect/Direct - T5 Lamps
Linear Prismatic Acrylic Lens

Catalog Number: MLS3-I1/D2-4-X-OP/LP-F01M-120-T5
Report Number: LTL#13043.ies

Luminaire Description: Extruded Aluminum Housing with Specular Aluminum Reflector Up and White Aluminum Reflector Down and Linear Prismatic Acrylic Lens and Open Top

Lamps: Three Philips F28T5/835/ALTO
 Rated at 2610 Lumens Each

Total Luminaire Efficiency = 59.0%
 49% Up 51% Down



MLS3-I2/D1

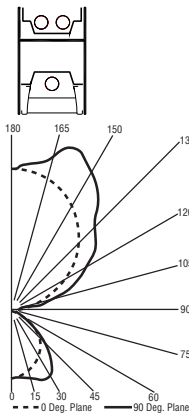
Indirect/Direct - T5H0 Lamps
Semi-Specular Aluminum Parabolic Baffle

Catalog Number: MLS3-I2/D1-4-X-OP/PB-F01M-120-T5H0
Report Number: LTL#13042.ies

Luminaire Description: Extruded Aluminum Housing with Specular Aluminum Reflector Up and White Aluminum Reflector Down and Semi-Specular Parabolic Baffle and Open Top

Lamps: Three Philips F54T5/850/HO/ALTO
 Rated at 4400 Lumens Each

Total Luminaire Efficiency = 71.3%
 76% Up 24% Down



MLS3-I2/D1

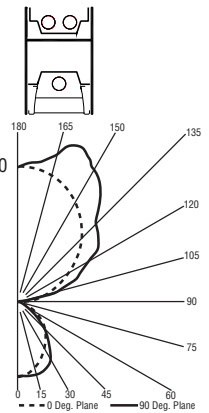
Indirect/Direct - T5H0 Lamps
White Aluminum Parabolic Baffle

Catalog Number: MLS3-I2/D1-4-X-OP/PBW-F01M-120-T5H0
Report Number: LTL#13041.ies

Luminaire Description: Extruded Aluminum Housing with Specular Aluminum Reflector Up and White Aluminum Reflector Down and White Parabolic Baffle and Open Top

Lamps: Three Philips F54T5/850/HO/ALTO
 Rated at 4400 Lumens Each

Total Luminaire Efficiency = 72.1%
 75% Up 25% Down



MLS3-I2/D1

Indirect/Direct - T5H0 Lamps
Linear Prismatic Acrylic Lens

Catalog Number: MLS3-I2/D1-4-X-OP/LP-F01M-120-T5H0
Report Number: LTL#13040.ies

Luminaire Description: Extruded Aluminum Housing with Specular Aluminum Reflector Up and White Aluminum Reflector Down and Linear Prismatic Acrylic Lens and Open Top

Lamps: Three Philips F54T5/850/HO/ALTO
 Rated at 4400 Lumens Each

Total Luminaire Efficiency = 70.5%
 77% Up 23% Down

