

Microlinea™ Wall Series 3 - Fluorescent



S P E C I F I C A T I O N S

Housing

One-piece .080" thick extruded aluminum. Die-cast aluminum end caps are secured with no visible fasteners. Standard lengths are nom. 4', 8' and 12'. Provisions may be made for continuous rows of any length.

Finish

Standard and premium finishes are baked powder coat electrostatically applied (2.0 mil minimum thickness) to assure aesthetics and durability.

Indirect Optical Controls

- (OP) Open
- (DC) Clear extruded 100% DR acrylic dust cover

Direct Optical Controls

- (PB) 3/4" deep semi-specular aluminum parabolic baffle with blades on 1 1/2" centers
- (PBW) 3/4" deep white aluminum parabolic baffle with blades on 1 1/2" centers
- (LP) Flush clear extruded 100% DR acrylic linear prismatic lens
- (TWA) Flush translucent white extruded 100% DR acrylic lens
- (FC) Flush frosted clear extruded DR acrylic lens
- (RTWA) Regressed translucent white DR acrylic lens

Reflectors

- Indirect - Die-formed from .020" thick high reflectance specular aluminum.
- Direct - Die-formed from .020" thick aluminum and finished with a high reflectance white enamel.

Ballast

Standard ballasts for T5 and T5HO lamps are UL/CUL listed, Class P, HPF, electronic, universal 120/277volt, programmed rapid start with <10% THD.

Circuitry

All fixtures are factory pre-wired for a single circuit. Provision for multiple switching/circuiting is optional.

Wiring

All fixtures intended for continuous rows are provided with factory installed quick-connect wiring.

Controls

Contact factory for control by Occupancy Sensors, Photo Controls and Daylight Harvesting.

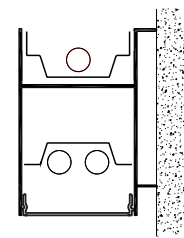
Certification

All fixtures are UL/CUL listed for use in 'Dry Applications'. 'Damp Location' is optional.

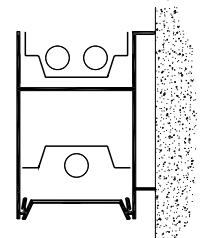
MLP3-I1/D2•MLP3-I2/D1

3 1/8" x 5" Indirect/Direct
(T5 and T5HO Lamps)

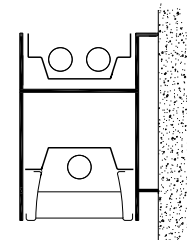
ADA Compliant



**MLP3-I1/D2
T5
Flush Lens Shown**

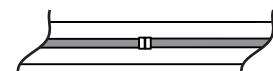


**MLP3-I2/D1
T5 or T5HO
Regress Lens Shown**

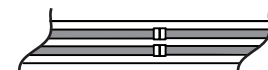


**MLP3-I2/D1
T5 or T5HO
Parabolic Baffle Shown**

In-Line Lamps:



1 Lamp T5/T5HO



**2 Lamp T5/T5HO
(*Note: 2 Lamp T5HO for Indirect Only)**

Series
MLP3-I1/D2
MLP3-I2/D1

Standard Lengths:
4', 8' and 12'

Mounting
W = Wall

Voltage
120
277
347

Lamp Type
T5
T5HO

MLP3-I1/D2-IL-12-W-DC/PB-F01M-V-T5-[]

Lamp Configuration

IL
In-Line Lamps - T5, T5HO

Indirect Optical Controls

OP
Open

DC
Clear Dust Cover
(N/A for T5HO)

Direct Optical Controls

PB
Semi-Specular
Parabolic Baffle

PBW
White Parabolic Baffle

LP
Linear Prismatic Lens

TWA
Translucent White
Acrylic Lens

FC
Frosted Clear Lens

RTWA
Regressed Translucent
White Acrylic Lens

Standard Finishes

F01M Matte White
Premium Finishes

F01G Gloss White

F02 Ivory

F03 Stonewash

F04 Camel

F05 Gray Day

F06 Pebble Beach

F07 Steel

F08 Gray Seal

F09 Mocha

F10 Bronzed

F11G Gloss Black

F11M Matte Black

F12 Ultrasonic Clear

F13 Merlot

F14 Red Skies

F15 Lemon

F16 Forest Hunter

F17 Olive

F18 Khaki

F19 Heather Green

F20 Blue Print

F21 Reflex Blue

F22 Navy

FCC Custom Color

Options

SS(U/L) (Upper/Lower)
Lamp Row Switching
(Common Neutral)

NLCKT
Night Light Circuit
(Common Neutral)

EMCKT
Emergency Circuit
(Separate Hot & Neutral)

EBPL
Emergency Battery Pack
(635-700 Lumens)

EBPH
Emergency Battery Pack
(975-1325 Lumens)

Dim

Dimming

FS
Fused Ballasts

GTD
Generator Transfer Device

AO
White Acrylic Baffle Overlay

DL
Damp Location



Precision Architectural Lighting 4830 Timber Creek Drive Houston, Texas 77017
Tel 713.946.4343 Fax 713.946.4441 www.pal-lighting.com



Made in America