

Microlinea™ Wall Series 3-Fluorescent



S P E C I F I C A T I O N S

Housing

One-piece .080" thick extruded aluminum. Die-cast aluminum end caps are secured with no visible fasteners. Standard lengths are 4', 8' and 12'. Provisions may be made for continuous rows of any length.

Finish

Standard and premium finishes are baked powder coat electrostatically applied (2.0 mil minimum thickness) to assure aesthetics and durability.

Indirect Optical Controls

- (OP) Open
- (DC) Clear extruded 100% DR acrylic dust cover

Direct Optical Controls

- (PB) 3/4" deep semi-specular aluminum parabolic baffle with blades on 1 1/2" centers
- (PBW) 3/4" deep white aluminum parabolic baffle with blades on 1 1/2" centers
- (LP) Flush clear extruded 100% DR acrylic linear prismatic lens
- (TWA) Flush translucent white extruded 100% DR acrylic lens
- (FC) Flush frosted clear extruded DR acrylic lens
- (RTWA) Regressed translucent white DR acrylic lens
- (DLP) Directional clear extruded 100% DR acrylic linear prismatic wall wash lens

Reflectors

- Indirect - (Asymmetric) Die-formed from .020" thick high reflectance specular aluminum.
- Indirect - (Symmetric) Die-formed from .020" thick high reflectance specular aluminum.
- Direct - (Asymmetric) Die-formed from .020" thick high reflectance specular aluminum.
- Direct - (Symmetric) Die-formed from .020" thick aluminum and finished with a high reflectance white enamel.

Ballast

Standard ballasts for T5 and T5HO lamps are UL/CUL listed, Class P, HPF, electronic, universal 120/277volt, programmed rapid start with <10% THD.

Circuitry

All fixtures are factory pre-wired for a single circuit. Provision for multiple switching/circuiting is optional.

Wiring

All fixtures intended for continuous rows are provided with factory installed quick-connect wiring.

Controls

Contact factory for control by Occupancy Sensors, Photo Controls and Daylight Harvesting.

Certification

All fixtures are UL/CUL listed for use in 'Dry Applications'. 'Damp Location' is optional.

Catalog Number

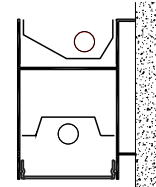
Type

Project Name

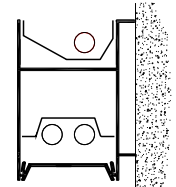
MLP3-I1ASY/D1•MLP3-I1ASY/D2 MLP3-I1ASY/D1ASY•MLP3-I2/D1ASY

3 1/8" x 5" Indirect/Direct
(T5 and T5HO Lamps)

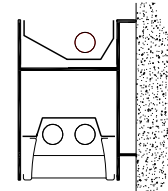
ADA Compliant



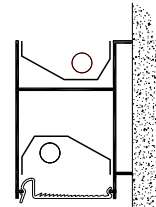
MLP3-I1ASY/D1
T5 or T5HO
Flush Lens Shown



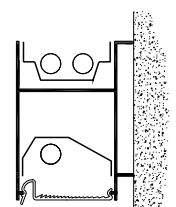
MLP3-I1ASY/D2
T5 or T5HO
Regress Lens Shown



MLP3-I1ASY/D2
T5 or T5HO
Parabolic Baffle Shown

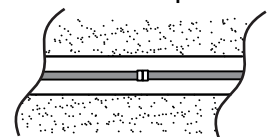


MLP3-I1ASY/D1ASY
T5 or T5HO
Directional Linear
Prismatic Lens Shown

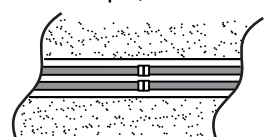


MLP3-I1/D1ASY
T5 or T5HO
Directional Linear
Prismatic Lens Shown

In-Line Lamps:



1 Lamp T5/T5HO



2 Lamp T5/T5HO

Series

MLP3-I1ASY/D1
MLP3-I1ASY/D2
MLP3-I1ASY/D1ASY
MLP3-I2/D1ASY

Standard Lengths:

4', 8' and 12'

Mounting

W = Wall

Voltage

120
277
347

MLP3-I1ASY/D2-IL-12-W-DC/PB-F01M-V-T5-[]

Lamp Configuration

IL
In-Line Lamps - T5, T5HO

Indirect Optical Controls

OP
Open
DC
Clear Dust Cover
(N/A for T5HO)

Direct Optical Controls

PB
Semi-Specular
Parabolic Baffle
PBW
White Parabolic Baffle
LP
Linear Prismatic Lens
TWA
Translucent White
Acrylic Lens
FC
Frosted Clear Lens
RTWA
Regressed Translucent
White Acrylic Lens
DLP
Directional Linear
Prismatic WW Lens

Standard Finishes

F01M Matte White
Premium Finishes
F01G Gloss White
F02 Ivory
F03 Stonewash
F04 Camel
F05 Gray Day
F06 Pebble Beach
F07 Steel
F08 Gray Seal
F09 Mocha
F10 Bronzed
F11 Black
F11M Matte Black
F12 Ultrasonic Clear
F13 Merlot
F14 Red Skies
F15 Lemon
F16 Forest Hunter
F17 Olive
F18 Khaki
F19 Heather Green
F20 Blue Print
F21 Reflex Blue
F22 Navy
FCC Custom Color

Lamp Type

T5
T5HO

Options

SS-U/L (Upper/Lower)
Lamp Row Switching
(Common Neutral)
NLCKT
Night Light Circuit
(Common Neutral)
EMCKT
Emergency Circuit
(Separate Hot & Neutral)
EBPL
Emergency Battery Pack
(635-700 Lumens)
EBPH
Emergency Battery Pack
(975-1325 Lumens)

Dim

Dimming
FS
Fused Ballasts
GTD
Generator Transfer
Device
AO
White Acrylic Baffle
Overlay
(N/A for 2-Lp T5HO)
DL
Damp Location



Precision Architectural Lighting 4830 Timber Creek Drive Houston, Texas 77017
Tel 713.946.4343 Fax 713.946.4441 www.pal-lighting.com



Made in America