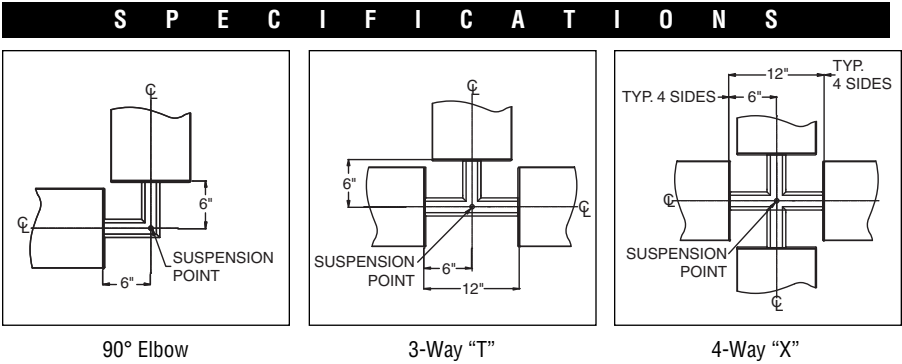


Catalog Number	Type
Project Name	

# Luminata III Series

## Connector Specifications



Luminta III Series	10" x 2 11/16"
Construction	One piece .156" thick cast aluminum.
Finish	Standard and premium finishes are baked powder coat electrostatically applied (2.0 mil. minimum thickness) to assure aesthetics and durability.

### HOW TO ORDER

Standard Connectors are 2-way 90°, 3-way "T", and 4-way "X".

**Catalog Logic**  
 All connectors should be specified and ordered as follows:

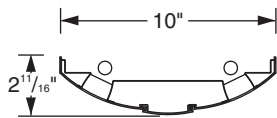
Series	Mounting
	<b>CN</b> = Cable (Non-Tbar) Fully Adjustable (36" Standard) <b>P</b> = Rigid Stem (Up to 48" Standard) <b>K</b> = Swivel Stem (Up to 48" Standard)
<b>LM3S-L90-CN-F01M</b>	
<b>Connector Type</b> <b>L90</b> 90° Connector <b>T</b> 3-Way Connector <b>X</b> 4-Way Connector	<b>Standard Finishes</b> <b>F01M</b> Matte White <b>Premium Finishes</b> <b>F01G</b> Gloss White <b>F13</b> Merlot <b>F02</b> Ivory <b>F14</b> Red Skies <b>F03</b> Stonewash <b>F15</b> Lemon <b>F04</b> Camel <b>F16</b> Forest Hunter <b>F05</b> Gray Day <b>F17</b> Olive <b>F06</b> Pebble Beach <b>F18</b> Khaki <b>F07</b> Steel <b>F19</b> Heather Green <b>F08</b> Gray Seal <b>F20</b> Blue Print <b>F09</b> Mocha <b>F21</b> Reflex Blue <b>F10</b> Bronzed <b>F22</b> Navy <b>F11</b> Black <b>FCC</b> Custom Color <b>F12</b> Ultrasonic Clear

\*Tbar mounting is not applicable when utilizing Connectors to form patterns.

# Luminata III Series

## Standard Fixture Lengths and Mounting Centers

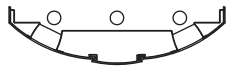
### Stem & Cable – Indirect Configurations



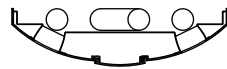
LM3S02-T5 (Or T5H0)



LM3S02-T8



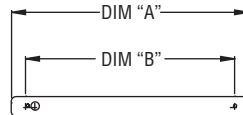
LM3S03-T5 (Or T5H0)



LM3S03-T8

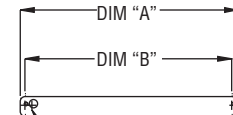


LM3S04-T8



EXTENDED END OPTION

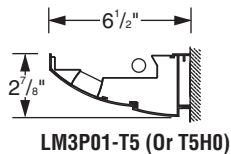
FIXTURE LENGTH DIM. "A"	MOUNTING CENTERS DIM. "B"
60 1/2"	48"
108 1/2"	96"
156 1/2"	144"



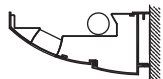
FEED POINT - TYP.

SCULPTED END OPTION

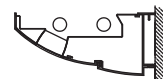
FIXTURE LENGTH DIM. "A"	MOUNTING CENTERS DIM. "B"
48 1/2"	48"
96 1/2"	96"
144 1/2"	144"



LM3P01-T5 (Or T5H0)



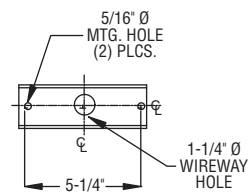
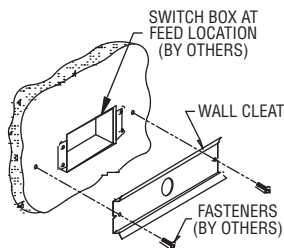
LM3P01-T8



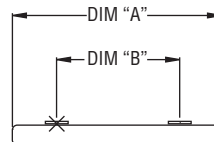
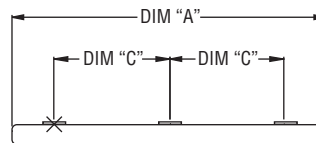
LM3P02-T5 (Or T5H0)



LM3P02-T8

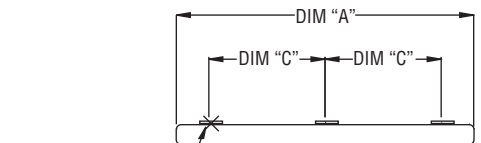


WALL CLEAT  
Mounting Hole Arrangement

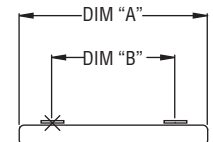


EXTENDED END OPTION

FIXTURE LENGTH DIM. "A"	MOUNTING CENTERS	
	DIM. "B"	DIM. "C"
60 1/2"	36"	—
108 1/2"	84"	—
156 1/2"	—	66"



FEED ENTRY - TYP.



SCULPTED END OPTION

FIXTURE LENGTH DIM. "A"	MOUNTING CENTERS	
	DIM. "B"	DIM. "C"
48 1/2"	36"	—
96 1/2"	84"	—
144 1/2"	—	66"

PAL RESERVES THE RIGHT TO CHANGE PRODUCT DESIGN AND SPECIFICATIONS. CONTACT FACTORY FOR MOST RECENT PRODUCT INFORMATION.

