



# LUMINAIRE TESTING LABORATORY, INC.

SUSTAINING MEMBER of the IESNA

905 Harrison Street · Allentown, PA 18103 · 610-770-1044 · Fax 610-770-8912 · www.LuminaireTesting.com

LTL NUMBER: 08687

DATE: 02-10-2005

PREPARED FOR: PRECISION ARCHITECTURAL LIGHTING

CATALOG NUMBER: LMSI/D04-PH-LI/PB-T8

LUMINAIRE: EXTRUDED ALUMINUM HOUSING WITH PERFORATED SECTIONS AND TRANSLUCENT WHITE ACRYLIC INSERTS, FORMED SPECULAR ALUMINUM REFLECTORS, 15 CELL, 1-3/8" DEEP, FORMED SEMI-SPECULAR ALUMINUM LOUVER, FORMED SPECULAR ALUMINUM UPPER REFLECTOR SURROUNDING MIDDLE LAMPS.

LAMPS: FOUR HORIZONTAL 32 WATT T8 LINEAR FLUORESCENT LAMPS RATED AT 2850 LUMENS EACH.

LAMP CATALOG NUMBER: PHILIPS F32T8/TL841/ALTO

BALLAST: ONE ADVANCE REL-4P32-SC

MOUNTING: PENDANT

LUMEN TO CANDELA RATIO USED = 9.18

TOTAL INPUT WATTS = 109.4 AT 120.0 VOLTS

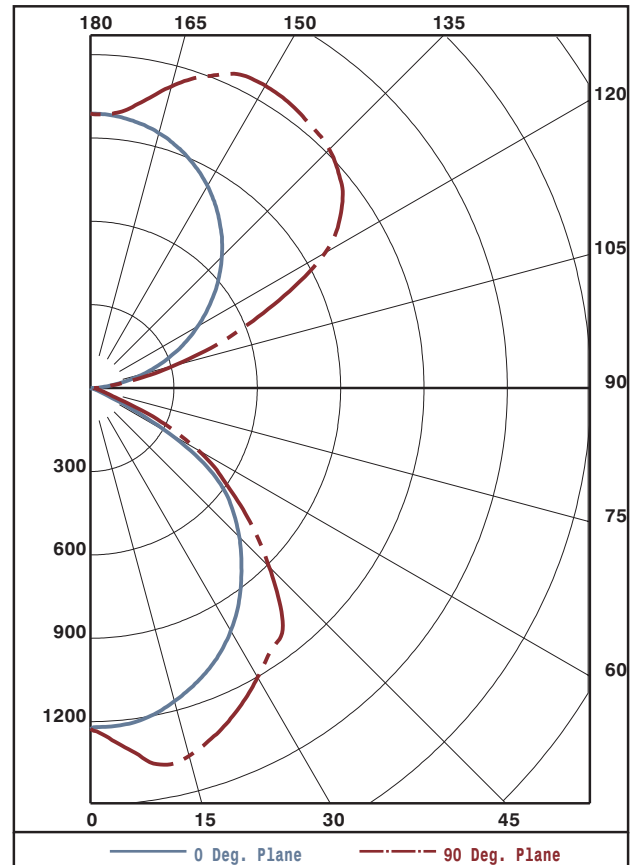
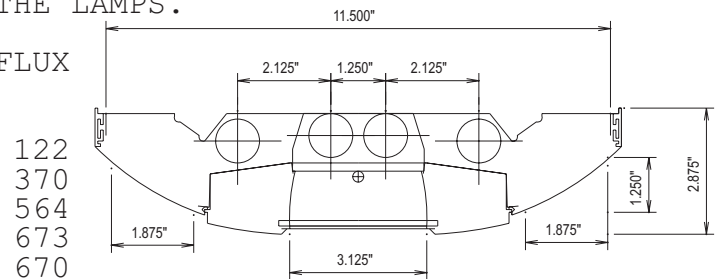
THE 0 DEGREE PLANE IS PARALLEL WITH THE LAMPS.

#08687

### CANDELA DISTRIBUTION

	0.0	22.5	45.0	67.5	90.0
0	1227	1227	1227	1227	1227
5	1218	1245	1274	1283	1290
15	1167	1259	1350	1364	1370
25	1074	1221	1243	1254	1268
35	932	1070	1080	1108	1142
45	756	858	888	894	909
55	538	595	582	572	591
65	98	141	195	238	264
75	12	18	28	40	45
85	1	6	11	16	19
90	1	4	8	12	14
95	38	66	47	52	55
105	197	400	373	324	308
115	366	596	774	770	749
125	524	762	953	1071	1100
135	668	884	1063	1175	1215
145	789	940	1137	1221	1250
155	884	960	1116	1214	1247
165	950	969	1040	1101	1124
175	984	986	990	992	993
180	988	988	988	988	988

### FLUX



### ZONAL LUMEN SUMMARY

ZONE	LUMENS	%LAMP	%FIXT
0- 30	1055	9.3	14.3
0- 40	1728	15.2	23.4
0- 60	2912	25.5	39.4
0- 90	3151	27.6	42.6
90-120	1092	9.6	14.8
90-130	1895	16.6	25.6
90-150	3356	29.4	45.4
90-180	4249	37.3	57.4
0-180	7400	64.9	100.0

TOTAL LUMINAIRE EFFICIENCY: 64.9%

CIE TYPE: GENERAL DIFFUSE

PLANE: 0-DEG 90-DEG

SPACING CRITERIA: 1.2 1.4

SHIELDING ANGLES: 24 44

TESTED BY HERSCHEL SCHRECK  
CHECKED BY MIKE GRATHER

**THIS REPORT BASED ON LM-41 AND OTHER PERTINENT IESNA PROCEDURES.**



LUMINAIRE TESTING LABORATORY, INC.

SUSTAINING MEMBER of the IESNA

905 Harrison Street · Allentown, PA 18103 · 610-770-1044 · Fax 610-770-8912 · www.LuminaireTesting.com

LTL NUMBER: 08687
PREPARED FOR: PRECISION ARCHITECTURAL LIGHTING

DATE: 02-10-2005

COEFFICIENTS OF UTILIZATION - ZONAL CAVITY METHOD
EFFECTIVE FLOOR CAVITY REFLECTANCE 0.20

Table with 19 columns (RC, RW, 80, 70, 50, 30, 10, 0) and 11 rows (0-10) showing utilization coefficients.

PLANE: 0-DEG 90-DEG
LUMINOUS LENGTH: 46.750 11.625
HEIGHT OF SIDE: 0.000 1.250

Table with 4 columns (ANGLE IN DEG, AVERAGE 0-DEG, AVERAGE 45-DEG, AVERAGE 90-DEG) and 6 rows (0, 45, 55, 65, 75, 85) showing luminance values.



LUMINAIRE TESTING LABORATORY, INC.

SUSTAINING MEMBER of the IESNA

905 Harrison Street · Allentown, PA 18103 · 610-770-1044 · Fax 610-770-8912 · www.LuminaireTesting.com

LTL NUMBER: 08687

DATE: 02-10-2005

PREPARED FOR: PRECISION ARCHITECTURAL LIGHTING

CANDELA DISTRIBUTION

Table with 6 columns of candela values for various angles from 0 to 180 degrees.

ZONAL LUMEN SUMMARY

Table with 2 columns showing lumen values for various angular zones from 0-5 to 175-180 degrees.

THIS TEST WAS CONDUCTED USING RELATIVE PHOTOMETRY TECHNIQUES ACCORDING TO STANDARD IESNA PROCEDURES. THE USER MUST THEREFORE USE CAUTION IN THE FOLLOWING SITUATIONS: 1) THIS TEST WAS PERFORMED USING A SPECIFIC BALLAST/LAMP COMBINATION. EXTRAPOLATION OF THESE DATA FOR OTHER BALLAST/LAMP COMBINATIONS MAY PRODUCE ERRONEOUS RESULTS. 2) ACCORDING TO IESNA PROCEDURES, THE BALLAST(S) AND LAMP(S) ARE PRESUMED TO PRODUCE 100% OF RATED OUTPUT. AN APPROPRIATE BALLAST FACTOR MUST BE APPLIED TO THE LUMEN OUTPUT RATINGS AND LUMINOUS INTENSITY VALUES GIVEN. 3) THIS TEST WAS CONDUCTED IN A CONTROLLED LABORATORY ENVIRONMENT WHERE THE AMBIENT TEMPERATURE WAS HELD AT 25°C ±1°C. FIELD PERFORMANCE MAY DIFFER PARTICULARLY IN REGARDS TO CHANGE IN LUMINOUS OUTPUT AS A RESULT OF DIFFERENCE IN AMBIENT TEMPERATURE AND METHOD OF MOUNTING THE LUMINAIRE.