



LUMINAIRE TESTING LABORATORY, INC.

SUSTAINING
MEMBER
of the
IESNA

905 Harrison Street · Allentown, PA 18103 · 610-770-1044 · Fax 610-770-8912 · www.LuminaireTesting.com

LTL NUMBER: 08688

DATE: 02-08-2005

PREPARED FOR: PRECISION ARCHITECTURAL LIGHTING

CATALOG NUMBER: LMSI/D04-PH-OP/PBW-T8

LUMINAIRE: EXTRUDED ALUMINUM HOUSING WITH PERFORATED SECTIONS AND TRANSLUCENT WHITE ACRYLIC INSERTS, FORMED SPECULAR ALUMINUM REFLECTORS, 15 CELL, 1-3/8" DEEP, FORMED WHITE ENAMEL ALUMINUM LOUVER, OPEN TOP.

LAMPS: FOUR HORIZONTAL 32 WATT T8 LINEAR FLUORESCENT LAMPS RATED AT 2850 LUMENS EACH.

LAMP CATALOG NUMBER: PHILIPS F32T8/TL841/ALTO

BALLAST: ONE ADVANCE REL-4P32-SC

MOUNTING: PENDANT

LUMEN TO CANDELA RATIO USED = 9.18

TOTAL INPUT WATTS = 113.8 AT 120.0 VOLTS

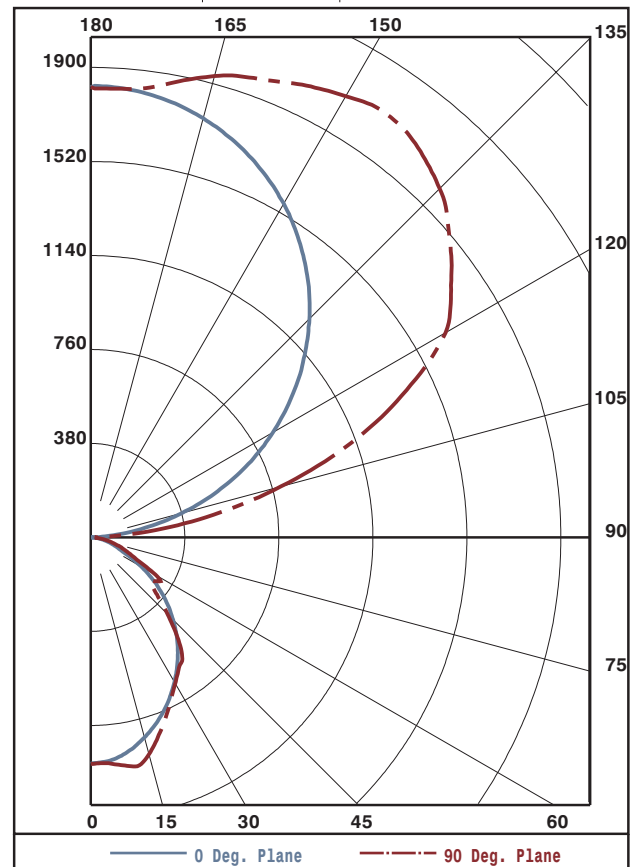
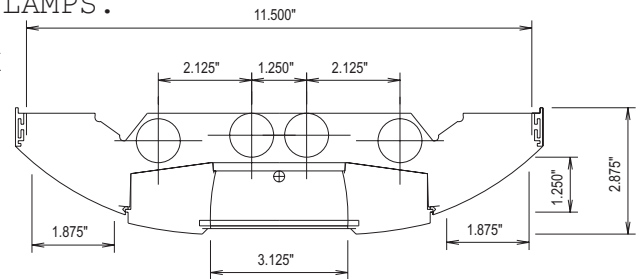
THE 0 DEGREE PLANE IS PARALLEL WITH THE LAMPS.

#08688

CANDELA DISTRIBUTION

	0.0	22.5	45.0	67.5	90.0	FLUX
0	915	915	915	915	915	87
5	905	907	914	914	918	249
15	837	856	905	910	908	350
25	736	781	765	748	750	387
35	611	641	600	606	628	355
45	471	474	465	444	438	272
55	315	317	293	275	307	182
65	155	168	185	194	196	95
75	76	82	91	99	102	28
85	20	22	25	27	29	197
90	1	5	9	13	15	756
95	78	189	189	178	174	1178
105	382	691	795	800	796	1339
115	703	1035	1287	1393	1408	1319
125	992	1282	1588	1729	1777	1142
135	1249	1474	1792	1944	1995	855
145	1466	1624	1857	2032	2087	522
155	1636	1715	1874	1977	2020	174
165	1754	1770	1849	1909	1931	
175	1817	1814	1821	1820	1820	
180	1821	1821	1821	1821	1821	

FLUX



ZONAL LUMEN SUMMARY

ZONE	LUMENS	%LAMP	%FIXT
0- 30	686	6.0	7.2
0- 40	1072	9.4	11.3
0- 60	1699	14.9	17.9
0- 90	2005	17.6	21.1
90-120	2131	18.7	22.5
90-130	3470	30.4	36.6
90-150	5930	52.0	62.5
90-180	7481	65.6	78.9
0-180	9486	83.2	100.0

TOTAL LUMINAIRE EFFICIENCY: 83.2%

CIE TYPE: SEMI-INDIRECT

PLANE: 0-DEG 90-DEG

SPACING CRITERIA: 1.1 1.1

SHIELDING ANGLES: 24 30

TESTED BY HERSCHEL SCHRECK
CHECKED BY MIKE GRATHER

THIS REPORT BASED ON LM-41 AND OTHER PERTINENT IESNA PROCEDURES.



LTL NUMBER: 08688

DATE: 02-08-2005

PREPARED FOR: PRECISION ARCHITECTURAL LIGHTING

COEFFICIENTS OF UTILIZATION - ZONAL CAVITY METHOD
EFFECTIVE FLOOR CAVITY REFLECTANCE 0.20

Table with columns RC, RW, and rows for angles 0-10 and reflectance values 80, 70, 50, 30, 10, 0.

PLANE: 0-DEG 90-DEG
LUMINOUS LENGTH: 46.750 11.625
HEIGHT OF SIDE: 0.000 1.250

Table with columns ANGLE IN DEG, AVERAGE 0-DEG, AVERAGE 45-DEG, AVERAGE 90-DEG.



LUMINAIRE TESTING LABORATORY, INC.

SUSTAINING MEMBER of the IESNA

905 Harrison Street · Allentown, PA 18103 · 610-770-1044 · Fax 610-770-8912 · www.LuminaireTesting.com

LTL NUMBER: 08688

DATE: 02-08-2005

PREPARED FOR: PRECISION ARCHITECTURAL LIGHTING

CANDELA DISTRIBUTION

Table with 6 columns of candela values for various angles from 0 to 180 degrees.

ZONAL LUMEN SUMMARY

Table with 2 columns: Zonal angle ranges and corresponding lumen values.

THIS TEST WAS CONDUCTED USING RELATIVE PHOTOMETRY TECHNIQUES ACCORDING TO STANDARD IESNA PROCEDURES. THE USER MUST THEREFORE USE CAUTION IN THE FOLLOWING SITUATIONS: 1) THIS TEST WAS PERFORMED USING A SPECIFIC BALLAST/LAMP COMBINATION. EXTRAPOLATION OF THESE DATA FOR OTHER BALLAST/LAMP COMBINATIONS MAY PRODUCE ERRONEOUS RESULTS. 2) ACCORDING TO IESNA PROCEDURES, THE BALLAST(S) AND LAMP(S) ARE PRESUMED TO PRODUCE 100% OF RATED OUTPUT. AN APPROPRIATE BALLAST FACTOR MUST BE APPLIED TO THE LUMEN OUTPUT RATINGS AND LUMINOUS INTENSITY VALUES GIVEN. 3) THIS TEST WAS CONDUCTED IN A CONTROLLED LABORATORY ENVIRONMENT WHERE THE AMBIENT TEMPERATURE WAS HELD AT 25°C ±1°C. FIELD PERFORMANCE MAY DIFFER PARTICULARLY IN REGARDS TO CHANGE IN LUMINOUS OUTPUT AS A RESULT OF DIFFERENCE IN AMBIENT TEMPERATURE AND METHOD OF MOUNTING THE LUMINAIRE.